



Chipsmall Limited consists of a professional team with an average of over 10 year of expertise in the distribution of electronic components. Based in Hongkong, we have already established firm and mutual-benefit business relationships with customers from,Europe,America and south Asia,supplying obsolete and hard-to-find components to meet their specific needs.

With the principle of “Quality Parts,Customers Priority,Honest Operation,and Considerate Service”,our business mainly focus on the distribution of electronic components. Line cards we deal with include Microchip,ALPS,ROHM,Xilinx,Pulse,ON,Everlight and Freescale. Main products comprise IC,Modules,Potentiometer,IC Socket,Relay,Connector.Our parts cover such applications as commercial,industrial, and automotives areas.

We are looking forward to setting up business relationship with you and hope to provide you with the best service and solution. Let us make a better world for our industry!



Contact us

Tel: +86-755-8981 8866 Fax: +86-755-8427 6832

Email & Skype: info@chipsmall.com Web: www.chipsmall.com

Address: A1208, Overseas Decoration Building, #122 Zhenhua RD., Futian, Shenzhen, China

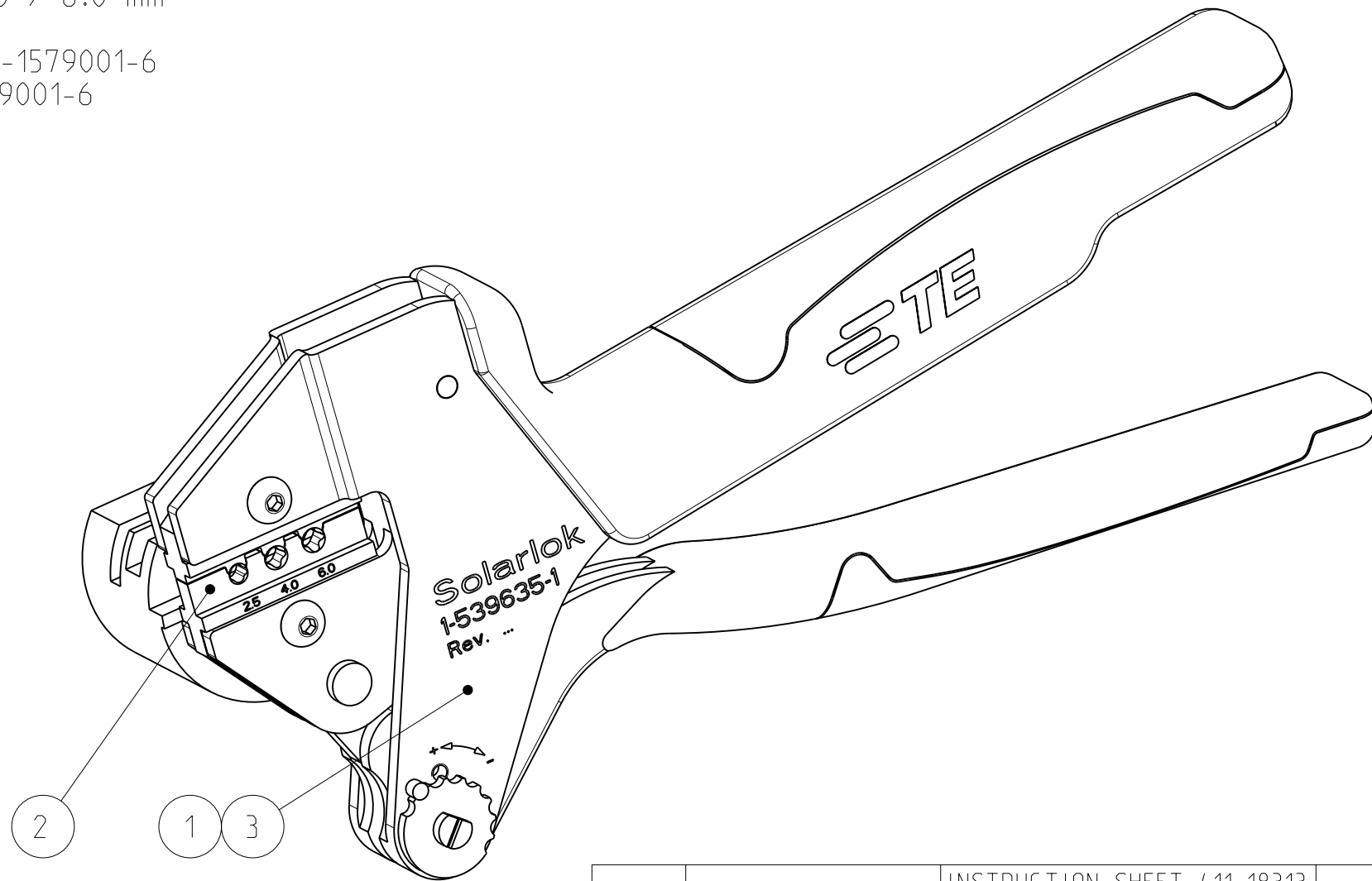


THIS DRAWING IS UNPUBLISHED.
 VERTRAULICHE UNVEROFFENTLICHTE ZEICHNUNG
 RELEASED FOR PUBLICATION
 FREI FUER VEROFFENTLICHUNG
 - 2007
 ALL RIGHTS RESERVED.
 ALLE INTERNATIONALEN RECHTE VORBEHALTEN.

LOC	DIST	REVISIONS AENDERUNGEN					
A1	-	P	LTR	DESCRIPTION BESCHREIBUNG	DATE	DWN	APVD
PROJEKT NR.:			A	EGCO - 0065 - 04	02APR2004	RK	HM
			A1	ECR-07-010529	17OCT2007	KL	-
			B	ECR-08-028786	13NOV2008	CW	-
			C	ECR-11-009199	04MAY2011	RN	CW

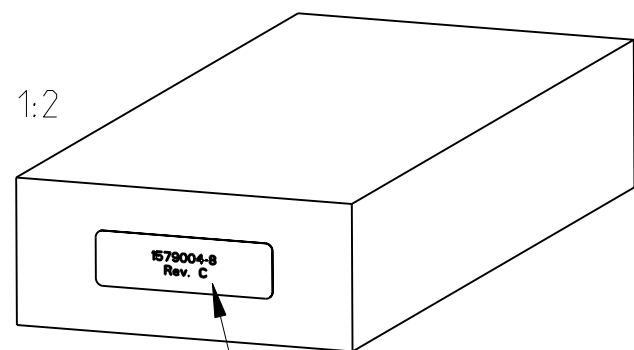
Crimp Handtool for Solarlok contacts with crimpsection 2.5 / 4.0 / 6.0 mm²
 Crimp Handzange fuer Solarlok Kontakte mit Crimpbereich 2.5 / 4.0 / 6.0 mm²
 Replacement die set with locator to get with TE Connectivity PN 6-1579001-6
 Ersatzmatrize mit Locator erhaeltlich mit TE Connectivity PN 6-1579001-6

CONTACT PN KONTAKT PN	CRIMPSECTION CRIMPBEREICH (mm ²)	CRIMPING HEIGHT CRIMPHOEHE (mm)	CRIMPING WIDTH CRIMPBREITE (mm)
4-1105300-1	2.5	*	*
4-1105301-1	2.5	*	*
5-1105300-1	4.0	*	*
5-1105301-1	4.0	*	*
7-1105300-2	6.0	*	*
7-1105301-2	6.0	*	*




* Crimpdata according to applicaton specification 114-94061
 (subject to technical modifications)
 Crimpdaten nach Verarbeitungsspezifikation 114-94061
 (Aenderungen vorbehalten)

Hand tool packed in a cardboard with instruction sheet
 Handzange im Karton mit Bedienungsanleitung verpackt



Label for Cardboard / Etikett fuer Karton

1	9-744010-2	INSTRUCTION SHEET 411-18313 BED. ANLEITUNG 411-18313	3
1	6-1579001-6	DIE SET SOLARLOK MATRIZE SOLARLOK	2
1	1-0539635-1	BASIC HANDTOOL BASIS HANDZANGE	1
QTY Stck	PN	DESCRIPTION BENENNUNG	POS.

THIS DRAWING IS A CONTROLLED DOCUMENT. DIESES ZEICHNUNGSOKUMENT WIRD DURCH AMP INCORPORATED KONTROLLIERT. AENDERUNGEN, DIE DEM TECHNISCHEN FORTSCHRITT DIENEN, SIND VORBEHALTEN. DEN JEWEILS LETZTUELTIGEN AENDERUNGSSTAND ERFAHREN SIE AUF ANFRAGE.		DWN R.KLAWONN	31MAR2004	 TE Connectivity	
DIMENSIONS: MASSEINHEITEN: mm		CHK	-		
TOLERANCES UNLESS OTHERWISE SPECIFIED: ALLGEMEINTOLERANZEN		APVD	-	NAME SOLARLOK CRIMP HANDTOOL SOLARLOK CRIMP HANDZANGE	
0 PLC ±-		PRODUCT SPEC PRODUKTSPEZ.	-	SIZE	
1 PLC ±-		APPLICATION SPEC VERARBEITUNGSSPEZ.	-	CAGE CODE	DRAWING NO ZEICHNUNGS-NR.
2 PLC ±-		WEIGHT GEWICHT	-	00779	C=1579004-8
3 PLC ±-		CUSTOMER DRAWING		SCALE MASSSTAB	RESTRICTED TO NUR FUER
4 PLC ±-		/KUNDENZEICHNUNG		5:1	REV
ANGLES/W INKEL ±1°		SCALE		5:1	1 OF 1
FINISH/OBERFLAECHE/FARBE		SHEET BLATT		1	VON 1
-		REV		C	