



Chipsmall Limited consists of a professional team with an average of over 10 year of expertise in the distribution of electronic components. Based in Hongkong, we have already established firm and mutual-benefit business relationships with customers from,Europe,America and south Asia,supplying obsolete and hard-to-find components to meet their specific needs.

With the principle of “Quality Parts,Customers Priority,Honest Operation,and Considerate Service”,our business mainly focus on the distribution of electronic components. Line cards we deal with include Microchip,ALPS,ROHM,Xilinx,Pulse,ON,Everlight and Freescale. Main products comprise IC,Modules,Potentiometer,IC Socket,Relay,Connector.Our parts cover such applications as commercial,industrial, and automotives areas.

We are looking forward to setting up business relationship with you and hope to provide you with the best service and solution. Let us make a better world for our industry!



## Contact us

Tel: +86-755-8981 8866 Fax: +86-755-8427 6832

Email & Skype: info@chipsmall.com Web: www.chipsmall.com

Address: A1208, Overseas Decoration Building, #122 Zhenhua RD., Futian, Shenzhen, China



## Docking frames - HC-B 16-ANDOCK-MOD-T - 1587454

Please be informed that the data shown in this PDF Document is generated from our Online Catalog. Please find the complete data in the user's documentation. Our General Terms of Use for Downloads are valid (<http://download.phoenixcontact.com>)



Docking frame for four module slots, floating assembly, plastic without PE, rack compensation of +/-2.0 mm in the x/y-axis, for M4 cylinder head screws

### Product description

Docking frame, fitted floating. Made from plastic without PE. Slide-in offset x/y axis +/- 2.0mm



### Key commercial data

Packing unit	1 PCE
Minimum order quantity	2 PCE
Weight per Piece (excluding packing)	20.0 GRM
Custom tariff number	85389099
Country of origin	Germany

### Technical data

#### General

Material	PC
Inflammability class according to UL 94	V0

### Classifications

#### eCl@ss

eCl@ss 4.0	27140816
eCl@ss 4.1	27140816
eCl@ss 5.0	27143424
eCl@ss 5.1	27143424
eCl@ss 6.0	27261209
eCl@ss 7.0	27440206
eCl@ss 8.0	27440206

# Docking frames - HC-B 16-ANDOCK-MOD-T - 1587454

## Classifications

### ETIM

ETIM 2.0	EC000437
ETIM 3.0	EC002312
ETIM 4.0	EC000437
ETIM 5.0	EC002310

### UNSPSC

UNSPSC 6.01	43172601
UNSPSC 7.0901	39121416
UNSPSC 11	43172601
UNSPSC 12.01	39121408
UNSPSC 13.2	39121408

## Approvals

### Approvals

---

Approvals

GOST

---

Ex Approvals

---

Approvals submitted

---

### Approval details

GOST 
--

## Accessories

Accessories

Mounting material

# Docking frames - HC-B 16-ANDOCK-MOD-T - 1587454

## Accessories

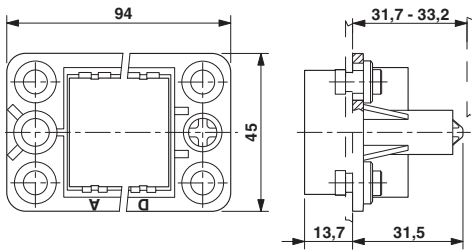
Washer - HC-MOD-ANDOCK-USCH - 1587496



Special washer for floating mounting of docking frame

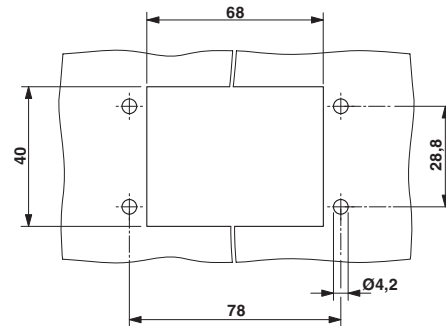
## Drawings

Dimensioned drawing



Dimensional drawing of HC-B 16-ANDOCK-MOD...

Dimensioned drawing



Mounting cutout for HC-B 16-ANDOCK-MOD...