



Chipsmall Limited consists of a professional team with an average of over 10 year of expertise in the distribution of electronic components. Based in Hongkong, we have already established firm and mutual-benefit business relationships with customers from,Europe,America and south Asia,supplying obsolete and hard-to-find components to meet their specific needs.

With the principle of “Quality Parts,Customers Priority,Honest Operation,and Considerate Service”,our business mainly focus on the distribution of electronic components. Line cards we deal with include Microchip,ALPS,ROHM,Xilinx,Pulse,ON,Everlight and Freescale. Main products comprise IC,Modules,Potentiometer,IC Socket,Relay,Connector.Our parts cover such applications as commercial,industrial, and automotives areas.

We are looking forward to setting up business relationship with you and hope to provide you with the best service and solution. Let us make a better world for our industry!



Contact us

Tel: +86-755-8981 8866 Fax: +86-755-8427 6832

Email & Skype: info@chipsmall.com Web: www.chipsmall.com

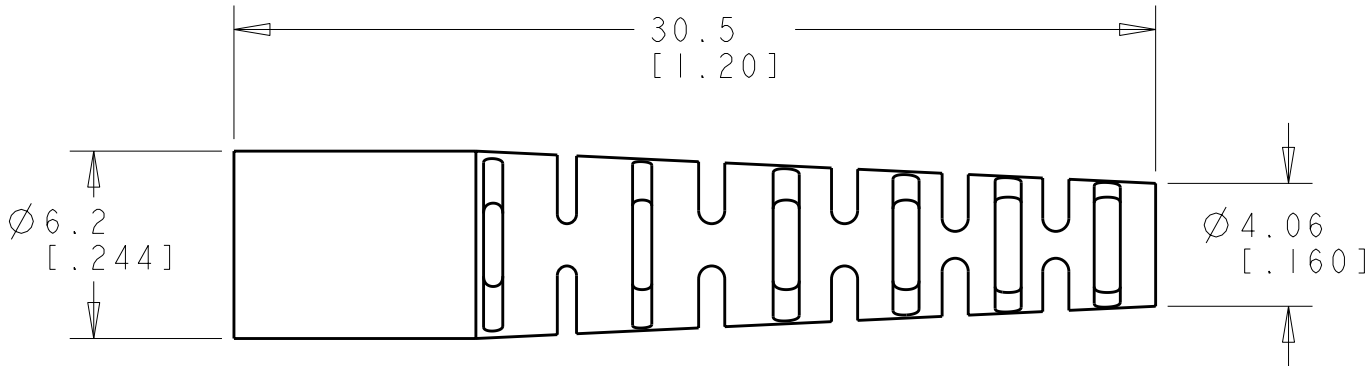
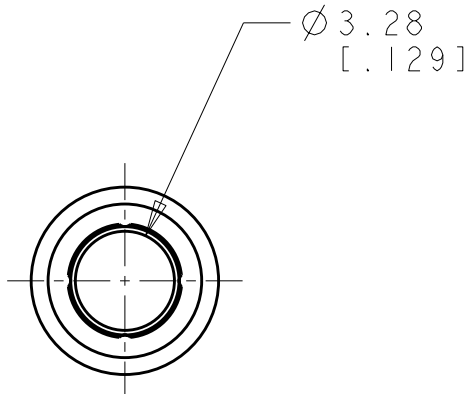
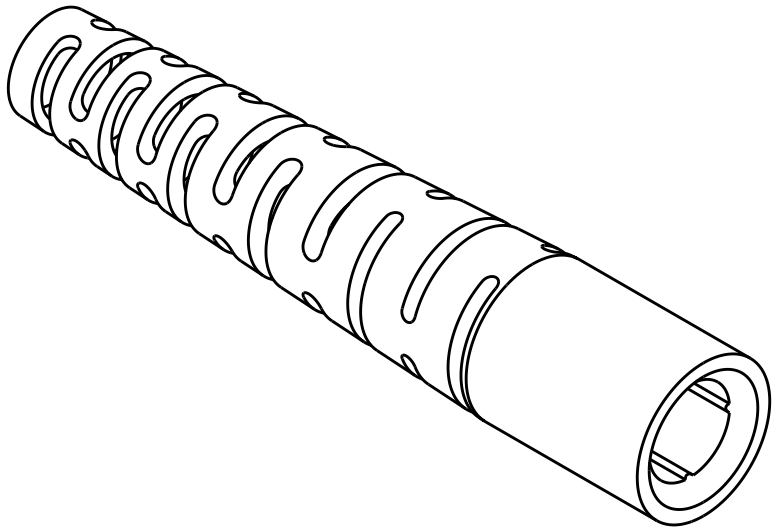
Address: A1208, Overseas Decoration Building, #122 Zhenhua RD., Futian, Shenzhen, China



2

1

LOC	DIST	REVISIONS					
		P	LTR	DESCRIPTION	DATE	DWN	APVD
HG	-		P	REVISE PER ECR-07-008803	20APR2007	BB	CB
			R	REVISE PER ECR-08-020169	23SEP2008	BB	SM
			RI	REVISE PER ECR-09-027460	22DEC2009	IL	CT



1 MATERIAL: PP, UL 94 V-0 RATED AT QUALIFYING THICKNESS.
SEE DASH NUMBERS FOR COLOR.

2. BULK PACKAGED.

AQUA	1588153-8
RED	1588153-7
GREEN	1588153-6
BEIGE	1588153-5
YELLOW	1588153-4
BLACK	1588153-3
BLUE	1588153-2
WHITE	1588153-1
COLOR	PART NO

THIS DRAWING IS A CONTROLLED DOCUMENT FOR TYCO ELECTRONICS CORPORATION IT IS SUBJECT TO CHANGE AND THE CONTROLLING ENGINEERING ORGANIZATION SHOULD BE CONTACTED FOR THE LATEST REVISION.		DWN D ERDMAN 27MAR2002		Tyco Electronics Corporation Shanghai, China					
DIMENSIONS: mm [INCHES]		CHK M BURKHOLDER 27MAR2002							
		APVD S BUCHTER 27MAR2002							
		PRODUCT SPEC		NAME - BOOT, BEND LIMITING, 1.6-2.4mm LC AND SC/ FC TYPE					
		APPLICATION SPEC							
		WEIGHT							
MATERIAL		FINISH		SIZE		CAGE CODE	DRAWING NO	RESTRICTED TO	
		-		A3			C-1588153	-	
CUSTOMER DRAWING				SCALE		SHEET		OF	REV
				4:1		1		1	RI