



Chipsmall Limited consists of a professional team with an average of over 10 year of expertise in the distribution of electronic components. Based in Hongkong, we have already established firm and mutual-benefit business relationships with customers from,Europe,America and south Asia,supplying obsolete and hard-to-find components to meet their specific needs.

With the principle of "Quality Parts,Customers Priority,Honest Operation,and Considerate Service",our business mainly focus on the distribution of electronic components. Line cards we deal with include Microchip,ALPS,ROHM,Xilinx,Pulse,ON,Everlight and Freescale. Main products comprise IC,Modules,Potentiometer,IC Socket,Relay,Connector.Our parts cover such applications as commercial,industrial, and automotives areas.

We are looking forward to setting up business relationship with you and hope to provide you with the best service and solution. Let us make a better world for our industry!



## Contact us

Tel: +86-755-8981 8866 Fax: +86-755-8427 6832

Email & Skype: info@chipsmall.com Web: www.chipsmall.com

Address: A1208, Overseas Decoration Building, #122 Zhenhua RD., Futian, Shenzhen, China



## Rear panel feed-through - RC-0000000C0FZ - 1592790


Please be informed that the data shown in this PDF Document is generated from our Online Catalog. Please find the complete data in the user's documentation. Our General Terms of Use for Downloads are valid (<http://download.phoenixcontact.com>)



Rear panel feed-through, straight, Screw locking, M23, Flat gasket, 4xM2.5, Shielded: Yes, Panel thickness max.: 2.5 mm, Cable cross section: 2 mm...10.5 mm



### Key commercial data

Packing unit	1 PCE
GTIN	 4 046356 192781
Custom tariff number	85366990
Country of origin	GERMANY

### Technical data

#### Technical data

Note	Order information Order contact inserts and cable clamping/shield accessories separately
Ambient temperature	-20 °C ... 125 °C
Type of locking	Screw locking
Degree of protection	IP67
Contact connection method	Crimp connection
Type of contacts	Socket
Conductor entry	2 mm ... 10.5 mm
Mounting type	4xM2.5

#### Material data

Housing material	Turned parts: copper zinc alloy (CuZn), die-cast parts: zinc (GD-Zn)
Gasket and O-ring material	FPM

Specifications according to DIN EN 61984:2001

# Rear panel feed-through - RC-0000000C0FZ - 1592790

## Technical data

Specifications according to DIN EN 61984:2001

Installation height max.	2000 m
--------------------------	--------

## Classifications

### ETIM

ETIM 3.0	EC001121
ETIM 4.0	EC001121
ETIM 5.0	EC001121

### UNSPSC

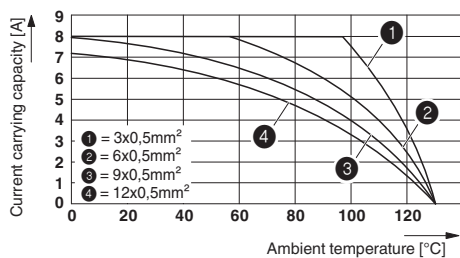
UNSPSC 11	43172015
UNSPSC 12.01	43201404
UNSPSC 13.2	43201404
UNSPSC 6.01	43172015
UNSPSC 7.0901	43201404

### eCl@ss

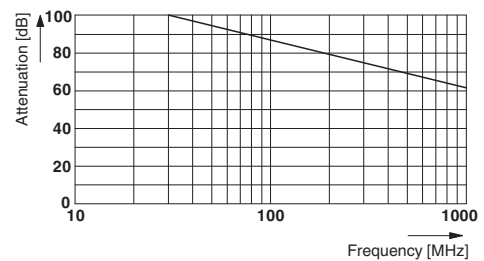
eCl@ss 4.0	272607xx
eCl@ss 4.1	27260701
eCl@ss 5.0	27260701
eCl@ss 5.1	27260701
eCl@ss 6.0	27260708
eCl@ss 7.0	27440312

## Drawings

Diagram

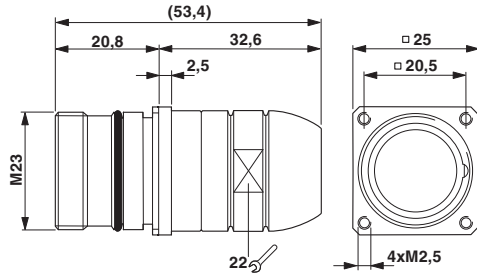


Diagram

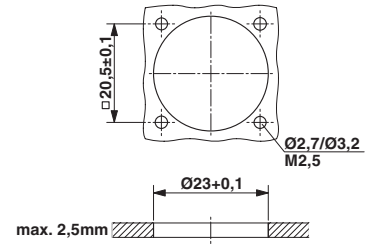


# Rear panel feed-through - RC-0000000C0FZ - 1592790

Dimensioned drawing



Dimensioned drawing



Dimensioned drawing

