



Chipsmall Limited consists of a professional team with an average of over 10 year of expertise in the distribution of electronic components. Based in Hongkong, we have already established firm and mutual-benefit business relationships with customers from,Europe,America and south Asia,supplying obsolete and hard-to-find components to meet their specific needs.

With the principle of “Quality Parts,Customers Priority,Honest Operation,and Considerate Service”,our business mainly focus on the distribution of electronic components. Line cards we deal with include Microchip,ALPS,ROHM,Xilinx,Pulse,ON,Everlight and Freescale. Main products comprise IC,Modules,Potentiometer,IC Socket,Relay,Connector.Our parts cover such applications as commercial,industrial, and automotives areas.

We are looking forward to setting up business relationship with you and hope to provide you with the best service and solution. Let us make a better world for our industry!



Contact us

Tel: +86-755-8981 8866 Fax: +86-755-8427 6832

Email & Skype: info@chipsmall.com Web: www.chipsmall.com

Address: A1208, Overseas Decoration Building, #122 Zhenhua RD., Futian, Shenzhen, China

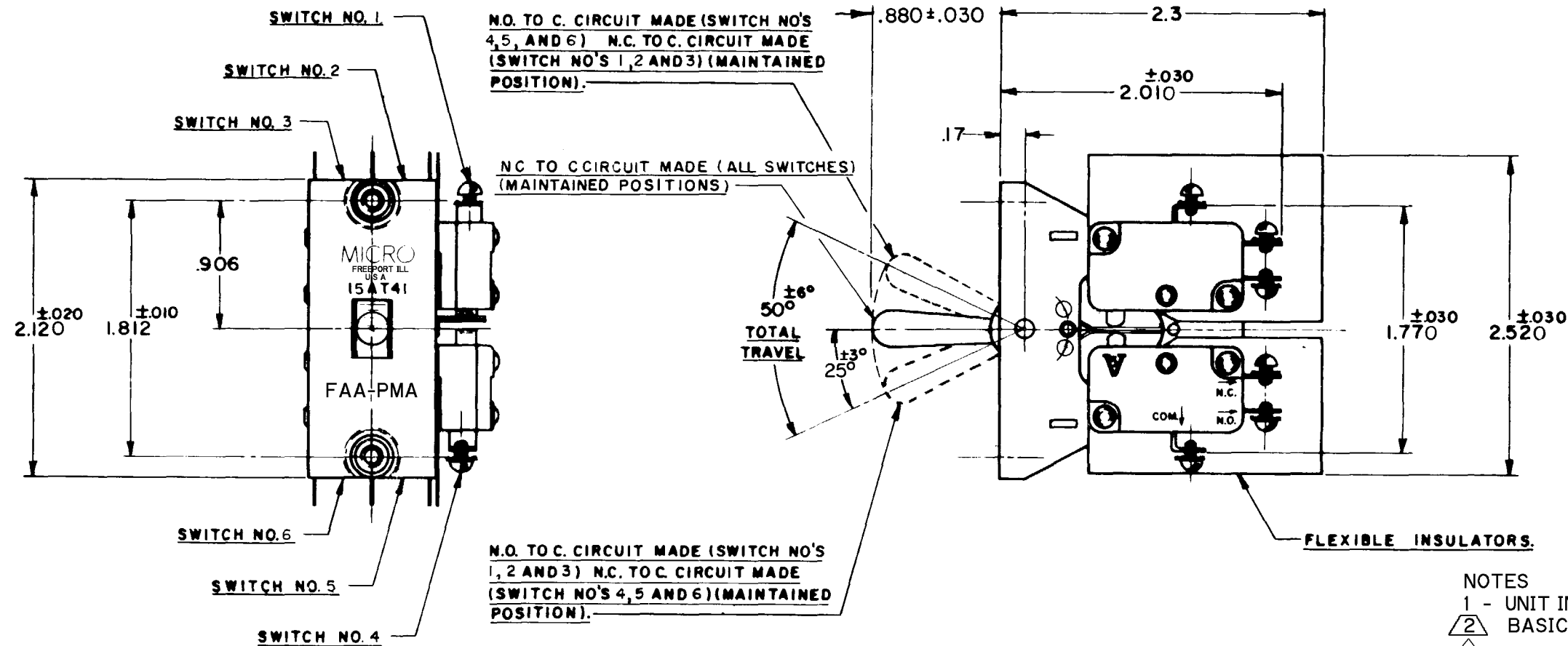
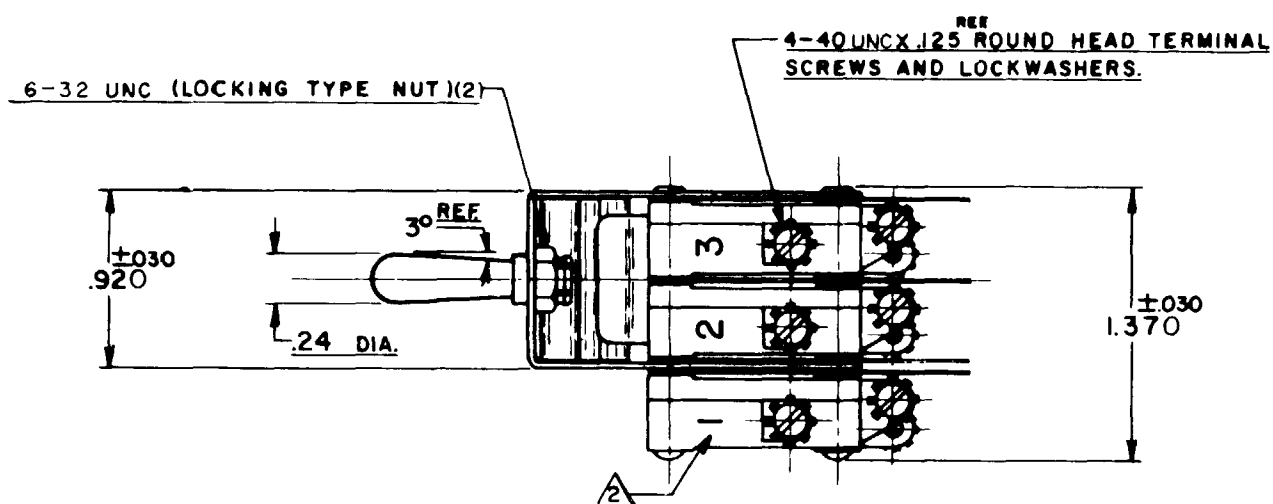


HONEYWELL
PART NUMBER

15AT41

FAA - PMA 3

REV	DOCUMENT	CHANGED BY	CHECK
7	0007403	KR 24AUG04	AK



NOTES

- 1 - UNIT INCLUDES CATALOG LISTING V3-201 BASIC SWITCH (6)
- 2 BASIC SWITCH NUMBER MARKED ON EACH BASIC SWITCH
- 3 FOR MANUFACTURING DETAIL SEE ASSEMBLY DRAWING 15AT41 FOR FAA-PMA

ELECTRICAL DATA

CONTACT ARRANGEMENT
S. R. D. T. (6)15 A - 1/3 HP - 125 OR 250 VAC
1/2 A - 125 VDC; 1/4 A - 250 VDCDESIGN UNITS: INCH
TOLERANCES UNLESS NOTED:

NO PLACE	X	±	
ONE PLACE	.X	±	0.030
TWO PLACE	.XX	±	0.015
THREE PLACE	.XXX	±	0.005
FOUR PLACE	.XXXX	±	
ANGLES		±	

THIRD ANGLE PROJECTION



DRAWN	MBF	19AUG63
CHECK	DAW	20AUG63
THIS DRAWING COVERS A PROPRIETARY ITEM AND IS THE PROPERTY OF HONEYWELL. THIS DRAWING IS NOT TO BE COPIED OR USED WITHOUT THE PERMISSION OF HONEYWELL.		
INTERPRET PER ASME Y14.5M-1994 OTHER HONEYWELL ENGINEERING STANDARDS MAY APPLY		

RASTER

Honeywell

TITLE

ASSEMBLY - TOGGLE SWITCH

SIZE	TYPE	DRAWING NAME	REV
B	I	15AT41	7
SCALE	1:1	SHEET	1 OF 1