



Chipsmall Limited consists of a professional team with an average of over 10 year of expertise in the distribution of electronic components. Based in Hongkong, we have already established firm and mutual-benefit business relationships with customers from,Europe,America and south Asia,supplying obsolete and hard-to-find components to meet their specific needs.

With the principle of “Quality Parts,Customers Priority,Honest Operation,and Considerate Service”,our business mainly focus on the distribution of electronic components. Line cards we deal with include Microchip,ALPS,ROHM,Xilinx,Pulse,ON,Everlight and Freescale. Main products comprise IC,Modules,Potentiometer,IC Socket,Relay,Connector.Our parts cover such applications as commercial,industrial, and automotives areas.

We are looking forward to setting up business relationship with you and hope to provide you with the best service and solution. Let us make a better world for our industry!



## Contact us

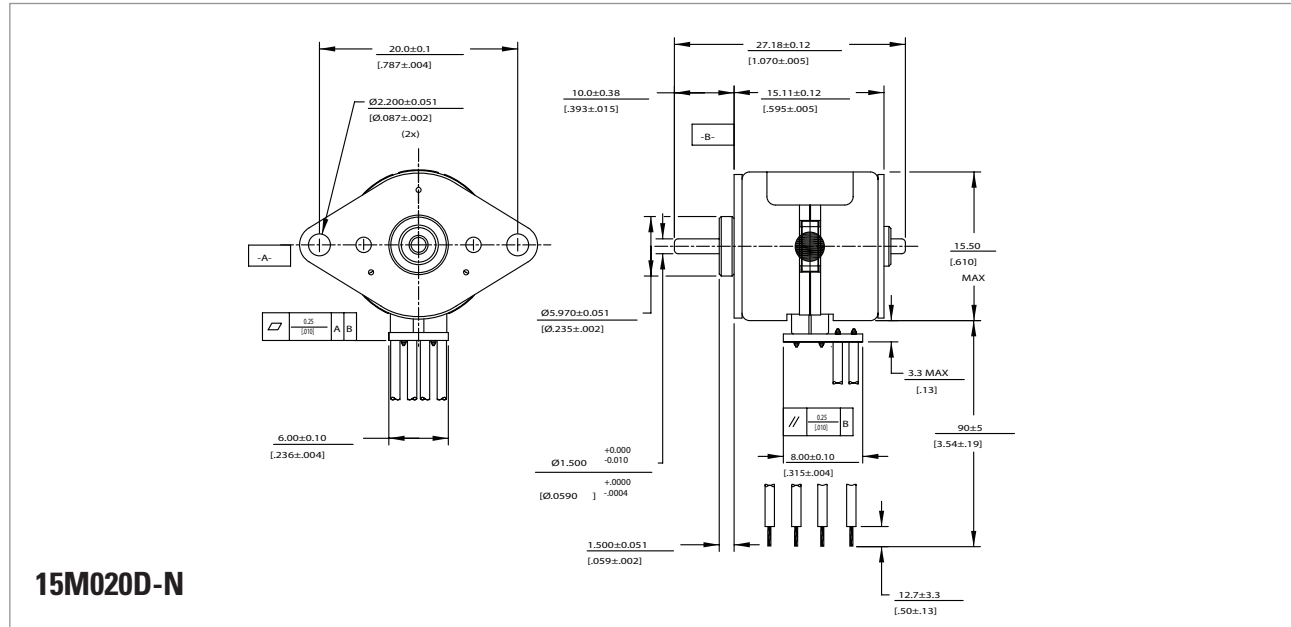
Tel: +86-755-8981 8866 Fax: +86-755-8427 6832

Email & Skype: info@chipsmall.com Web: www.chipsmall.com

Address: A1208, Overseas Decoration Building, #122 Zhenhua RD., Futian, Shenzhen, China



## 15M020D



15M020D-N

### Technical Specifications

Part Number		15M020D1B-N
Rated voltage	(vdc)	5
Resistance per phase ± 10%	(ohms)	40
Inductance per phase, Typ	(mH)	14
Rated current per phase *	(amps)	0.125
Holding torque, min *	(oz-in / mNm)	0.55 / 3.87
Step angle, ± 1.5° *	(degrees)	18
Steps per revolution *		20
Detent torque, max	(oz-in / mNm)	0.23 / 1.62
Thermal resistance	(°C / watt)	N.A.
Rotor moment of inertia	(oz-in-s <sup>2</sup> / g-cm <sup>2</sup> )	6.29 x 10E-4 / 0.115
Ambient temperature range		
Operating	(°C)	-20 ~ +70
Storage	(°C)	-40 ~ +85
Bearing type		Sintered bronze sleeve
Insulation resistance at 500vdc	(MΩ)	100
Dielectric withstanding voltage	(vac)	450 for 2 seconds
Weight	(lb / g)	0.03125 / 14
Shaft load ratings, max at 600 rpm		
Radial	(lbs / kg)	0.055 / 0.025
Axial	(lbs / kg)	0.055 / 0.025
Leadwires		28 AWG, UL 1429
Temperature class, max	(°C)	B(130°C)
RoHS		Compliant

All motor data values at 25°C unless otherwise specified

\* Energise at rated current, 2 phase on

