



Chipsmall Limited consists of a professional team with an average of over 10 year of expertise in the distribution of electronic components. Based in Hongkong, we have already established firm and mutual-benefit business relationships with customers from,Europe,America and south Asia,supplying obsolete and hard-to-find components to meet their specific needs.

With the principle of “Quality Parts,Customers Priority,Honest Operation,and Considerate Service”,our business mainly focus on the distribution of electronic components. Line cards we deal with include Microchip,ALPS,ROHM,Xilinx,Pulse,ON,Everlight and Freescale. Main products comprise IC,Modules,Potentiometer,IC Socket,Relay,Connector.Our parts cover such applications as commercial,industrial, and automotives areas.

We are looking forward to setting up business relationship with you and hope to provide you with the best service and solution. Let us make a better world for our industry!



Contact us

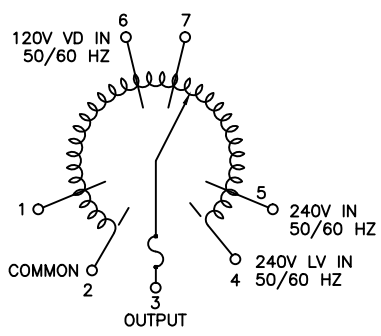
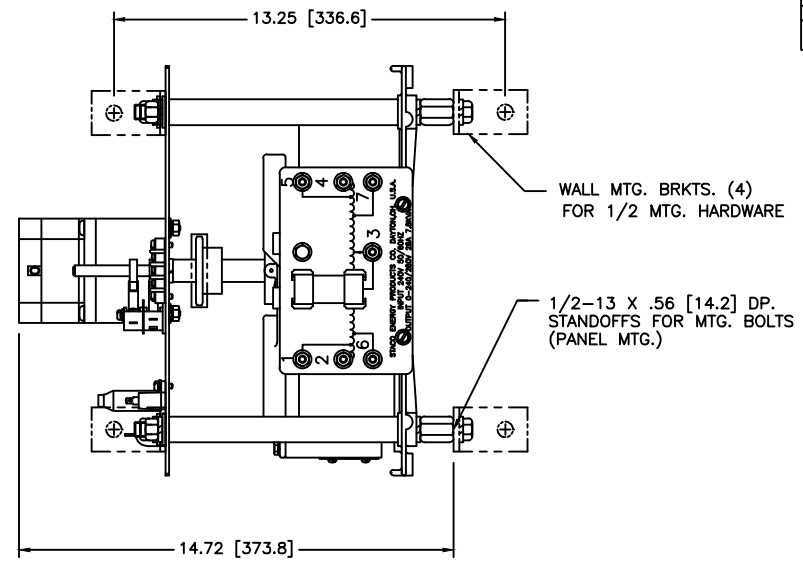
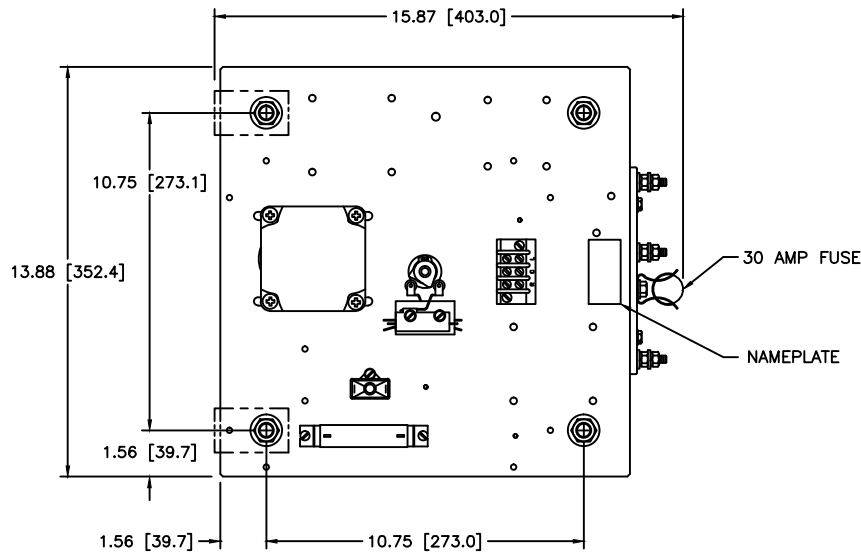
Tel: +86-755-8981 8866 Fax: +86-755-8427 6832

Email & Skype: info@chipsmall.com Web: www.chipsmall.com

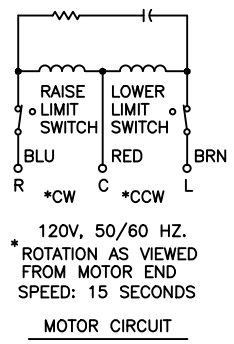
Address: A1208, Overseas Decoration Building, #122 Zhenhua RD., Futian, Shenzhen, China



REV.	QTY.	DATE	APPROV.
REVISED			
A	24960	10/2/02	
NEW MOTOR			



SCHMATIC VIEW FROM ROTOR END



MOTOR CIRCUIT

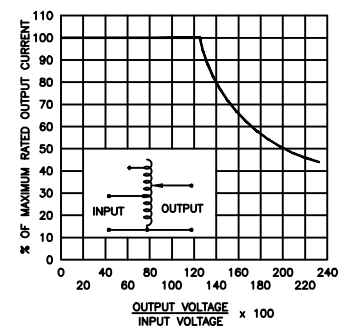


FIGURE A
MAXIMUM OUTPUT CURRENT OF ANY DUAL INPUT VOLTAGE OR VOLTAGE DOUBLER UNIT OPERATED AT LOWER INPUT VOLTAGE.

* MAXIMUM OUTPUT CURRENT IN OUTPUT VOLTAGE RANGE FROM 0 TO 25% ABOVE LINE VOLTAGE. AT HIGHER OUTPUT VOLTAGES, OUTPUT CURRENT MUST BE REDUCED ACCORDING TO RATING CURVE FIGURE A.

‡ MAXIMUM KVA AT MAXIMUM OUTPUT AND CORRESPONDING DE-RATED CURRENT. MAXIMUM KVA AT LOWER OUTPUT VOLTAGES MAY BE CALCULATED FROM RATING CURVE FIGURE A.

SPECIFICATIONS									
WIRING	INPUT		OUTPUT			SHAFT ROTATION FOR INCREASE VOLTAGE	TERMINAL CONNECTIONS FOR INCREASING VOLTAGE AS VIEWED FROM ROTOR END		
	VOLTS	HERTZ	VOLTS	MAX. AMPS	MAX. KVA		INPUT	OUTPUT	
SINGLE PHASE	240	50/60	0-240	28	6.7	CW	2-4	2-3	
			0-280	28	7.8	CCW	4-2	4-3	
	120	50/60	0-280	28-12 V.D.*	3.4‡	CW	2-5	2-3	
			0-280	28-12 V.D.*	3.4‡	CCW	4-1	4-3	
						CW	2-6	2-3	
							CCW	4-7	4-3

<small>UNLESS OTHERWISE SPECIFIED, DIMENSIONS IN A DRAWING ARE TO BE AS SHOWN UNLESS OTHERWISE SPECIFIED. DIMENSIONS ARE TO BE TO THE CENTER UNLESS OTHERWISE SPECIFIED. DIMENSIONS ARE TO BE TO THE CENTER UNLESS OTHERWISE SPECIFIED. DIMENSIONS ARE TO BE TO THE CENTER UNLESS OTHERWISE SPECIFIED.</small>	<small>UNLESS OTHERWISE SPECIFIED, DIMENSIONS IN A DRAWING ARE TO BE AS SHOWN UNLESS OTHERWISE SPECIFIED. DIMENSIONS ARE TO BE TO THE CENTER UNLESS OTHERWISE SPECIFIED. DIMENSIONS ARE TO BE TO THE CENTER UNLESS OTHERWISE SPECIFIED.</small>	<small>UNLESS OTHERWISE SPECIFIED, DIMENSIONS IN A DRAWING ARE TO BE AS SHOWN UNLESS OTHERWISE SPECIFIED. DIMENSIONS ARE TO BE TO THE CENTER UNLESS OTHERWISE SPECIFIED. DIMENSIONS ARE TO BE TO THE CENTER UNLESS OTHERWISE SPECIFIED.</small>	<small>UNLESS OTHERWISE SPECIFIED, DIMENSIONS IN A DRAWING ARE TO BE AS SHOWN UNLESS OTHERWISE SPECIFIED. DIMENSIONS ARE TO BE TO THE CENTER UNLESS OTHERWISE SPECIFIED. DIMENSIONS ARE TO BE TO THE CENTER UNLESS OTHERWISE SPECIFIED.</small>
<small>THE INFORMATION AND DESIGN DESCRIBED HEREIN ARE OFFERED BY STAGS ENERGY PRODUCTS CO. AS A SERVICE TO OUR CUSTOMERS AND ARE NOT TO BE REPRODUCED OR TRANSMITTED IN ANY FORM OR BY ANY MEANS, ELECTRONIC, MECHANICAL, PHOTOCOPYING, RECORDING, OR BY ANY INFORMATION STORAGE AND RETRIEVAL SYSTEM, WITHOUT THE WRITTEN PERMISSION OF STAGS ENERGY PRODUCTS CO.</small>	<small>DESIGNED BY F. SEALE</small>	<small>DATE 12/9/96</small>	<small>WEIGHT APPROX. 7 1/2 LBS</small>
<small>STAGS ENERGY PRODUCTS CO. A Corporation of America Company 300 South Boulevard, Dallas, Texas 75248-1041</small>	<small>SCALE .5=1</small>	<small>DRWG 1 OF 1</small>	<small>REV. NO. D 031-7585</small>