



Chipsmall Limited consists of a professional team with an average of over 10 year of expertise in the distribution of electronic components. Based in Hongkong, we have already established firm and mutual-benefit business relationships with customers from,Europe,America and south Asia,supplying obsolete and hard-to-find components to meet their specific needs.

With the principle of “Quality Parts,Customers Priority,Honest Operation,and Considerate Service”,our business mainly focus on the distribution of electronic components. Line cards we deal with include Microchip,ALPS,ROHM,Xilinx,Pulse,ON,Everlight and Freescale. Main products comprise IC,Modules,Potentiometer,IC Socket,Relay,Connector.Our parts cover such applications as commercial,industrial, and automotives areas.

We are looking forward to setting up business relationship with you and hope to provide you with the best service and solution. Let us make a better world for our industry!



## Contact us

Tel: +86-755-8981 8866 Fax: +86-755-8427 6832

Email & Skype: info@chipsmall.com Web: www.chipsmall.com

Address: A1208, Overseas Decoration Building, #122 Zhenhua RD., Futian, Shenzhen, China





# CUT-OUT COVERS™

- 20 standard sizes and styles accommodate most industry standard connectors
- Fast, easy assembly with push-on stainless steel clips furnished with each cover
- Provides an attractive finished look to panels
- For use with CPCI, VME, Eurocard and other panels



**Mounting Information:**

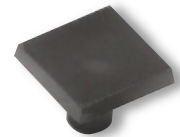
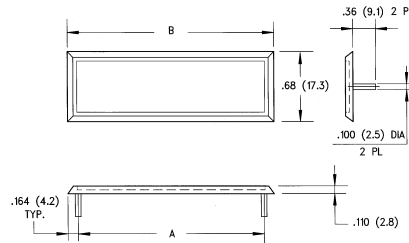
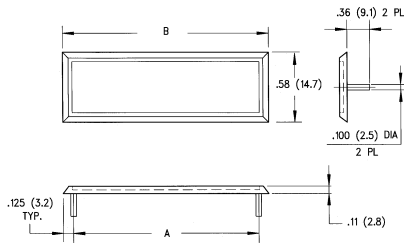
Attaches with provided stainless steel, push-on clips

**Material Specifications:**

UL Rated 94V-0, Black, ABS  
 Oxygen Index: +28%  
 UL File # E121562

**Application Notes:**

Cut-Out covers can be hot stamped and/or labeled for easy identification

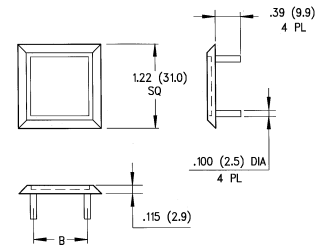
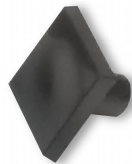
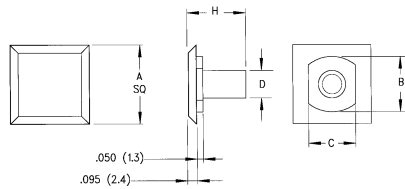


**Cut-Out Covers Series 10**

Part No.	A	B	Clip No.	Price Code
10-9	.984 (25.0)	1.23 (31.2)	SSC-1	BB
10-15	1.312 (33.3)	1.56 (39.6)	SSC-1	DD
10-25	1.852 (47.0)	2.10 (53.3)	SSC-1	FF
10-37	2.500 (63.5)	2.75 (69.9)	SSC-1	HH
10-50	2.406 (61.1)	2.66 (67.6)	SSC-1	JJ

**Cut-Out Covers Series 12**

Part No.	A	B	Clip No.	Price Code
12-14R	1.417 (36.0)	1.745 (44.3)	SSC-1	FF
12-24R	1.842 (46.8)	2.170 (55.1)	SSC-1	GG
12-36R	2.352 (59.7)	2.680 (68.1)	SSC-1	JJ
12-50R	2.947 (74.9)	3.275 (83.2)	SSC-1	KK
12-64R	3.542 (90.0)	3.875 (98.4)	SSC-1	MM



**Cut-Out Covers Series 14**

Part No.	A	B	C	D	H	Type	Clip No.	Price Code
14-11		.187 (4.7)	.155 (3.9)			SMC	SSC-1	AA
14-12	.375 (9.5)	.245 (6.2)	.215 (5.5)	.125 (3.2)		MINI COAX.	SSC-1	AA
14-13	Sq.	.276 (7.0)	.235 (6.0)			SMC. M. COAX.	SSC-1	AA
14-21		.360 (9.1)	.310 (7.9)		.47 (11.9)	TNC, BNC	BPC-125	CC
14-22	.625 (15.9)	.430 (10.9)	.375 (9.5)			TNC, COAX	BPC-125	CC
14-23	Sq.	.495 (12.6)	.430 (10.9)	.250 (6.4)		BNC, SHV	BPC-125	CC
14-31	.812 (20.6)	.625 (15.9)	.520 (13.2)		.58 (14.7)	N SERIES	BPC-125L	EE
14-32	Sq.	.750 (19.1)	.630 (16.0)			TWIN VIDEO	BPC-125L	EE

**Cut-Out Covers Series 16**

Part No.	B	Shell Size	Clip No.	Price Code
16-41	.906 (23.0)	14, 15	SSC-1	LL
16-42	.969 (24.6)	16, 17	SSC-1	LL