



Chipsmall Limited consists of a professional team with an average of over 10 year of expertise in the distribution of electronic components. Based in Hongkong, we have already established firm and mutual-benefit business relationships with customers from,Europe,America and south Asia,supplying obsolete and hard-to-find components to meet their specific needs.

With the principle of “Quality Parts,Customers Priority,Honest Operation,and Considerate Service”,our business mainly focus on the distribution of electronic components. Line cards we deal with include Microchip,ALPS,ROHM,Xilinx,Pulse,ON,Everlight and Freescale. Main products comprise IC,Modules,Potentiometer,IC Socket,Relay,Connector.Our parts cover such applications as commercial,industrial, and automotives areas.

We are looking forward to setting up business relationship with you and hope to provide you with the best service and solution. Let us make a better world for our industry!



Contact us

Tel: +86-755-8981 8866 Fax: +86-755-8427 6832

Email & Skype: info@chipsmall.com Web: www.chipsmall.com

Address: A1208, Overseas Decoration Building, #122 Zhenhua RD., Futian, Shenzhen, China



Cold Plates & Spacer Blocks



Cold Plates

Series #	Assembly Hole Spacing A	Number & maximum size of TEC
-100	1.5" (38mm) O.C.	1 x 1.34" (34mm)
-200	2.0" (51mm) O.C.	1 x 1.73" (44mm)
-300	3.0" (76mm) O.C.	1 x 2.44" (62mm)
-400	2.0" (51mm) O.C. (2 sets)	2 x 1.73" (44mm)

MELCOR's cold plates can serve either as a heat spreader distributing a cooling or heating effect over a larger area, or as a cooling platform. Most of our cold plates are for use with a single thermoelectric module, but the CB-401 is designed for use with two thermoelectrics. The cold plates are intended for use with our thermoelectrics as part of a complete thermoelectric system.

Features

- All aluminum construction
- Machined finish
- Sensor hole for temperature monitoring 0.062" (1.58mm) diameter, 0.75" (19mm) deep
- Tapped or clearance assembly holes English 6-32 or Metric M3

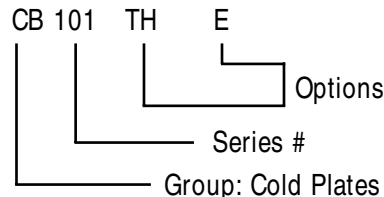
Dimensions

Model	Width in (mm)	Length in (mm)	Height in (mm)
CB-101	2.0 (51)	2.0 (51)	0.25 (6.4)
CB-201	3.0 (76)	3.0 (76)	0.25 (6.4)
CB-301	4.0 (102)	4.0 (102)	0.25 (6.4)
CB-401	3.0 (76)	6.0 (152)	0.25 (6.4)

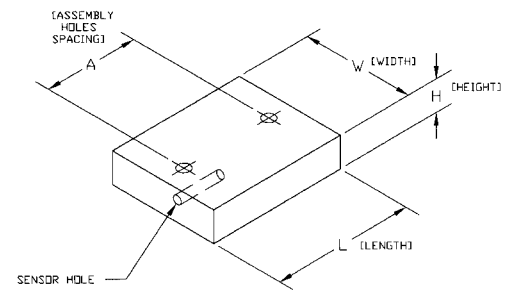
Options	Description
NH	No Holes
CL*	Clearance Holes
TH-E	Tapped Holes - English
TH-M	Tapped Holes - Metric

* Standard

Models



Mechanical Characteristics



MELCOR's spacer blocks widen the gap between the cold surfaces and hot side heat exchanger, allowing for more insulation material. The spacer blocks are intended for use with our CP, PT, or HT series of thermoelectrics as part of a complete thermoelectric system.

Features

- All aluminum construction
- Machined finish
- Sensor hole for temperature monitoring 0.062" (1.58mm) diameter, 0.75" (19mm) deep
- Tapped or clearance assembly holes English 6-32 or Metric M3
- Height tolerance of $\pm 0.001"$

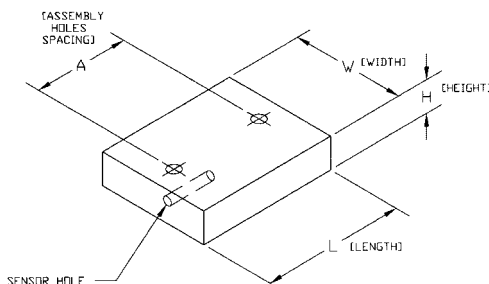
Spacer Blocks

Series #	Assembly Hole Spacing A	Number & maximum size of TECs
-100	1.5" (38mm) O.C.	1 x 1.34" (34mm)
-200	2.0" (51mm) O.C.	1 x 1.73" (44mm)
-300	3.0" (76mm) O.C.	1 x 2.44" (62mm)
-400	Use two of the SB-201 spacer blocks	

Dimensions

Model	Width in (mm)	Length in (mm)	Height in (mm)
SB-101	1.25 (32)	1.75 (45)	0.50 (12.7)
SB-201	1.62 (41)	2.25 (57)	0.50 (12.7)
SB-301	2.50 (64)	3.25 (83)	0.50 (12.7)

Mechanical Characteristics



Options	Description
NH	No Holes
CL*	Clearance Holes
TH-E	Tapped Holes - English
TH-M	Tapped Holes - Metric

* Standard

Models

