



Chipsmall Limited consists of a professional team with an average of over 10 year of expertise in the distribution of electronic components. Based in Hongkong, we have already established firm and mutual-benefit business relationships with customers from,Europe,America and south Asia,supplying obsolete and hard-to-find components to meet their specific needs.

With the principle of “Quality Parts,Customers Priority,Honest Operation,and Considerate Service”,our business mainly focus on the distribution of electronic components. Line cards we deal with include Microchip,ALPS,ROHM,Xilinx,Pulse,ON,Everlight and Freescale. Main products comprise IC,Modules,Potentiometer,IC Socket,Relay,Connector.Our parts cover such applications as commercial,industrial, and automotives areas.

We are looking forward to setting up business relationship with you and hope to provide you with the best service and solution. Let us make a better world for our industry!



## Contact us

Tel: +86-755-8981 8866 Fax: +86-755-8427 6832

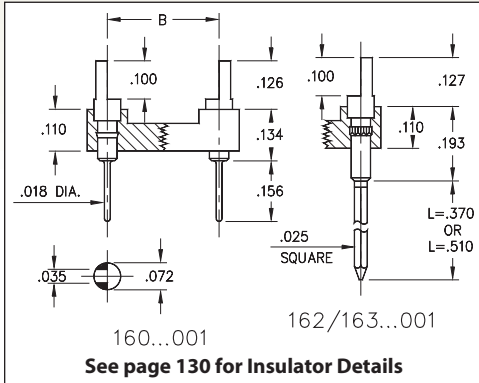
Email & Skype: info@chipsmall.com Web: www.chipsmall.com

Address: A1208, Overseas Decoration Building, #122 Zhenhua RD., Futian, Shenzhen, China



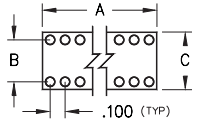

# DUAL-IN-LINE HEADERS

## SERIES 160, 162, 163 • SLOTTED, SOLDER TAIL & WRAPOST • OPEN FRAME



- Series 160, 162, and 163 DIL Headers are equipped with slotted heads to accept wires or component leads
- Series 160 terminations are pluggable .018" dia. solder tails MM #0282, See page 216 for details. Series 162 and 163 terminations are two or three level wraposts MM #1106. See page 228 for details
- Insulators are high temperature thermoplastic, suitable for all soldering operations
- For Electrical, Mechanical and Environmental Data, see page 264 for details



Total number of pins				Quantity per tube	ORDERING INFORMATION					
	A	B	C		Solder Tail	L = .370 (2 Level Wrapost)	L = .510 (3 Level Wrapost)			
10	0.5	0.2	0.3	41	160-XX-210-00-001000	162-XX-210-00-001000	163-XX-210-00-001000			
4	0.2	0.3	0.4	102	160-XX-304-00-001000	162-XX-304-00-001000	163-XX-304-00-001000			
6	0.3	0.3	0.4	67	160-XX-306-00-001000	162-XX-306-00-001000	163-XX-306-00-001000			
8	0.4	0.3	0.4	50	160-XX-308-00-001000	162-XX-308-00-001000	163-XX-308-00-001000			
10	0.5	0.3	0.4	40	160-XX-310-00-001000	162-XX-310-00-001000	163-XX-310-00-001000			
14	0.7	0.3	0.4	28	160-XX-314-00-001000	162-XX-314-00-001000	163-XX-314-00-001000			
16	0.8	0.3	0.4	25	160-XX-316-00-001000	162-XX-316-00-001000	163-XX-316-00-001000			
18	0.9	0.3	0.4	22	160-XX-318-00-001000	162-XX-318-00-001000	163-XX-318-00-001000			
20	1.0	0.3	0.4	20	160-XX-320-00-001000	162-XX-320-00-001000	163-XX-320-00-001000			
22	1.1	0.3	0.4	18	160-XX-322-00-001000	162-XX-322-00-001000	163-XX-322-00-001000			
24	1.2	0.3	0.4	16	160-XX-324-00-001000	162-XX-324-00-001000	163-XX-324-00-001000			
28	1.4	0.3	0.4	14	160-XX-328-00-001000	162-XX-328-00-001000	163-XX-328-00-001000			
20	1.0	0.4	0.5	20	160-XX-420-00-001000	162-XX-420-00-001000	163-XX-420-00-001000			
22	1.1	0.4	0.5	18	160-XX-422-00-001000	162-XX-422-00-001000	163-XX-422-00-001000			
24	1.2	0.4	0.5	16	160-XX-424-00-001000	162-XX-424-00-001000	163-XX-424-00-001000			
28	1.4	0.4	0.5	14	160-XX-428-00-001000	162-XX-428-00-001000	163-XX-428-00-001000			
32	1.6	0.4	0.5	12	160-XX-432-00-001000	162-XX-432-00-001000	163-XX-432-00-001000			
24	1.2	0.6	0.7	16	160-XX-624-00-001000	162-XX-624-00-001000	163-XX-624-00-001000			
28	1.4	0.6	0.7	14	160-XX-628-00-001000	162-XX-628-00-001000	163-XX-628-00-001000			
32	1.6	0.6	0.7	12	160-XX-632-00-001000	162-XX-632-00-001000	163-XX-632-00-001000			
36	1.8	0.6	0.7	11	160-XX-636-00-001000	162-XX-636-00-001000	163-XX-636-00-001000			
40	2.0	0.6	0.7	10	160-XX-640-00-001000	162-XX-640-00-001000	163-XX-640-00-001000			
42	2.1	0.6	0.7	9	160-XX-642-00-001000	162-XX-642-00-001000	163-XX-642-00-001000			
48	2.4	0.6	0.7	8	160-XX-648-00-001000	162-XX-648-00-001000	163-XX-648-00-001000			
50	2.5	0.6	0.7	8	160-XX-650-00-001000	162-XX-650-00-001000	163-XX-650-00-001000			
52	2.6	0.6	0.7	7	160-XX-652-00-001000	162-XX-652-00-001000	163-XX-652-00-001000			
50	2.5	0.9	1.0	8	160-XX-950-00-001000	162-XX-950-00-001000	163-XX-950-00-001000			
52	2.6	0.9	1.0	7	160-XX-952-00-001000	162-XX-952-00-001000	163-XX-952-00-001000			
64	3.2	0.9	1.0	6	160-XX-964-00-001000	162-XX-964-00-001000	163-XX-964-00-001000			
<div style="border: 1px solid black; border-radius: 50%; padding: 5px; display: inline-block;"> <b>XX=Plating Code</b>  <b>See to Right</b> </div>					<b>SPECIFY PLATING CODE XX =</b>		10 ◆	90	40 ◆	
					Pin Plating 	10 μ" Au	200 μ" Sn/Pb	200 μ" Sn		

