



Chipsmall Limited consists of a professional team with an average of over 10 year of expertise in the distribution of electronic components. Based in Hongkong, we have already established firm and mutual-benefit business relationships with customers from,Europe,America and south Asia,supplying obsolete and hard-to-find components to meet their specific needs.

With the principle of "Quality Parts,Customers Priority,Honest Operation,and Considerate Service",our business mainly focus on the distribution of electronic components. Line cards we deal with include Microchip,ALPS,ROHM,Xilinx,Pulse,ON,Everlight and Freescale. Main products comprise IC,Modules,Potentiometer,IC Socket,Relay,Connector.Our parts cover such applications as commercial,industrial, and automotives areas.

We are looking forward to setting up business relationship with you and hope to provide you with the best service and solution. Let us make a better world for our industry!



## Contact us

Tel: +86-755-8981 8866 Fax: +86-755-8427 6832

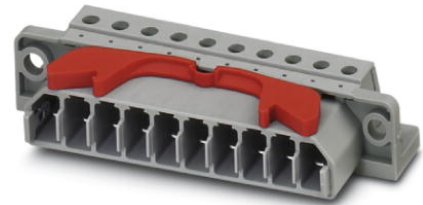
Email & Skype: info@chipsmall.com Web: www.chipsmall.com

Address: A1208, Overseas Decoration Building, #122 Zhenhua RD., Futian, Shenzhen, China



## HCC 4-M

Order No.: 1600014



<http://eshop.phoenixcontact.de/phoenix/treeViewClick.do?UID=1600014>

Plug, Type of connection: Screw connection, Screw connection, Cross section: 0.2 mm<sup>2</sup> - 4 mm<sup>2</sup>, AWG 24 - 12, Width: 92 mm, Height: 18 mm, Color: gray, Mounting type: Direct screw connection

| Commercial data          |                    |
|--------------------------|--------------------|
| EAN                      | 4017918021740      |
| Pack                     | 50 pcs.            |
| Customs tariff           | 85366990           |
| Weight/Piece             | 0.03736 KG         |
| Catalog page information | Page 298 (CL-2009) |

#### Product notes

WEEE/RoHS-compliant since:  
01/01/2003



<http://www.download.phoenixcontact.com>  
Please note that the data given here has been taken from the online catalog. For comprehensive information and data, please refer to the user documentation. The General Terms and Conditions of Use apply to Internet downloads.

#### Technical data

##### Dimensions / positions

|        |         |
|--------|---------|
| Length | 34.2 mm |
| Height | 18 mm   |
| Width  | 92 mm   |

**Technical data**

|                                    |   |
|------------------------------------|---|
| Insulating material group          | I   |
| Maximum load current               | 25 A (with 4 mm <sup>2</sup> conductor cross section) |
| Insulating material                | PA  |
| Inflammability class acc. to UL 94 | V2  |

**Certificates / Approvals**

Certification

BV, CSA, DNV, GL, GOST, LR, UL

**CSA**

|                                |       |
|--------------------------------|-------|
| Nominal voltage U <sub>N</sub> | 300 V |
| Nominal current I <sub>N</sub> | 20 A  |
| AWG/kcmil                      | 28-10 |

**UL**

|                                |       |
|--------------------------------|-------|
| Nominal voltage U <sub>N</sub> | 300 V |
| Nominal current I <sub>N</sub> | 20 A  |
| AWG/kcmil                      | 30-10 |

**Accessories**

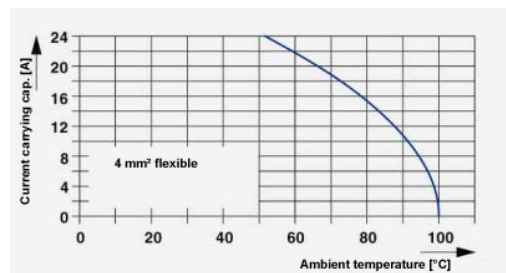
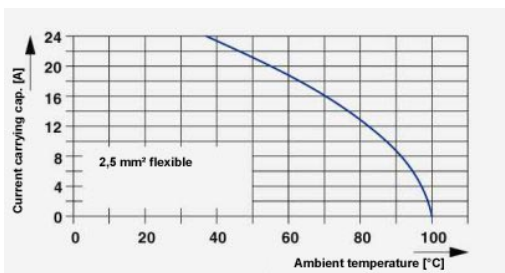
| Item                | Designation | Description  |
|---------------------|-------------|--|
| <b>Plug/Adapter</b> |             |  |
| 1600027             | CP-HCC 4    | Keying profile for contact inserts, Color: red   |
| 3100224             | HCC 4-SR    | Strain relief, Color: gray   |
| <b>Tools</b>        |             |  |
| 1205053             | SZS 0,6X3,5 | Screwdriver, bladed, matches all screw terminal blocks up to 4.0 mm <sup>2</sup> connection cross section, blade: 0.6 x 3.5 mm, without VDE approval |

**Additional products**

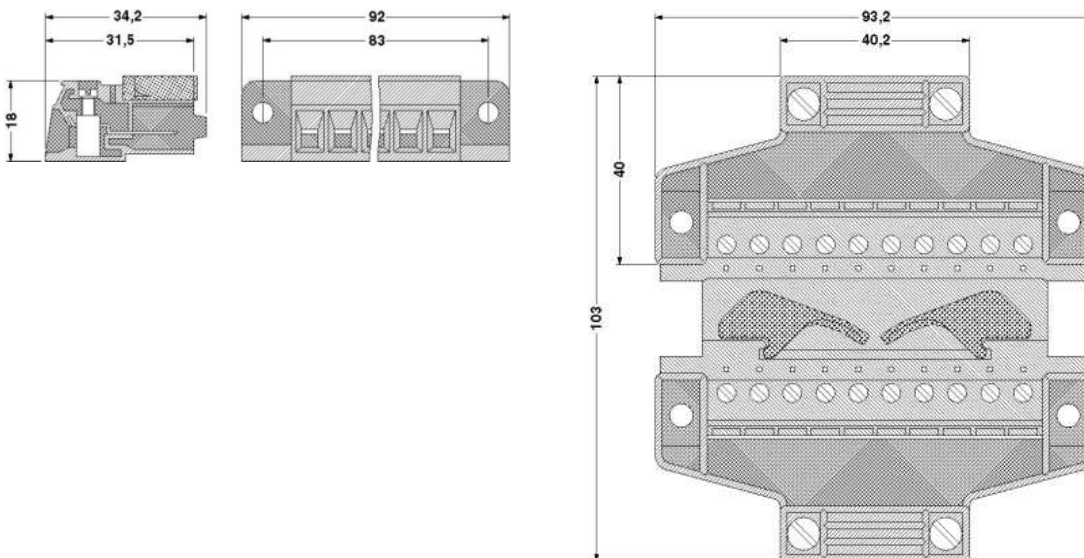
| Item           | Designation | Description   |
|----------------|-------------|---|
| <b>General</b> |             |   |
| 1600001        | HCC 4-F     | Female insert, Type of connection: Screw connection, Screw connection, Cross section: 0.2 mm <sup>2</sup> - 4 mm <sup>2</sup> , AWG 24 - 12, Width: 92 mm, Height: 18 mm, Color: gray |

**Drawings**

Diagram



Dimensioned drawing



**Address**

PHOENIX CONTACT Inc., USA  
586 Fulling Mill Road  
Middletown, PA 17057, USA  
Phone (800) 888-7388  
Fax (717) 944-1625  
<http://www.phoenixcon.com>



© 2009 Phoenix Contact  
Technical modifications reserved;