



Chipsmall Limited consists of a professional team with an average of over 10 year of expertise in the distribution of electronic components. Based in Hongkong, we have already established firm and mutual-benefit business relationships with customers from,Europe,America and south Asia,supplying obsolete and hard-to-find components to meet their specific needs.

With the principle of "Quality Parts,Customers Priority,Honest Operation,and Considerate Service",our business mainly focus on the distribution of electronic components. Line cards we deal with include Microchip,ALPS,ROHM,Xilinx,Pulse,ON,Everlight and Freescale. Main products comprise IC,Modules,Potentiometer,IC Socket,Relay,Connector.Our parts cover such applications as commercial,industrial, and automotives areas.

We are looking forward to setting up business relationship with you and hope to provide you with the best service and solution. Let us make a better world for our industry!



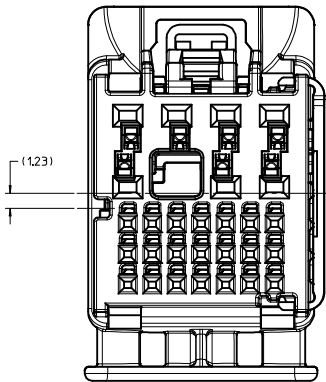
## Contact us

Tel: +86-755-8981 8866 Fax: +86-755-8427 6832

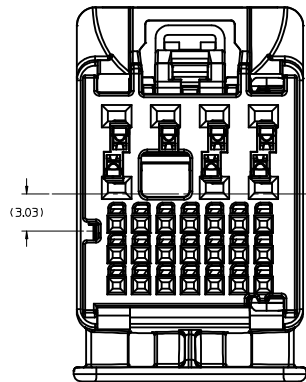
Email & Skype: info@chipsmall.com Web: www.chipsmall.com

Address: A1208, Overseas Decoration Building, #122 Zhenhua RD., Futian, Shenzhen, China

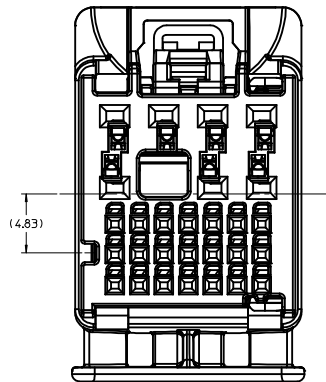




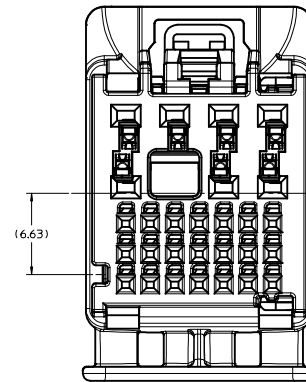
28WAY CONNECTOR ASSY  
KEY 1  
P/N 1600140001



28WAY CONNECTOR ASSY  
KEY 2  
P/N 1600140002



28WAY CONNECTOR ASSY  
KEY 3  
P/N 1600140003



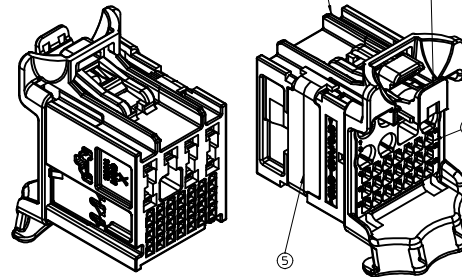
28WAY CONNECTOR ASSY  
KEY 4  
P/N 1600140004

- NOTES: VALID UNLESS OTHERWISE SPECIFIED
- GENERAL:
    - APPLICATION SPECIFICATION SEE: AS-160014-001
    - PRODUCT SPECIFICATION SEE: PS-160014-001
    - PACKAGING SPECIFICATION PER MOLEX DRAWING: PK-31302-266
    - PARTS MUST BE IN COMPLIANCE TO MOLEX CHEMICAL SUBSTANCES FOR PRODUCTS AND PACKAGING SPECIFICATION: ES-40000-5016
    - DATA MUST BE SUBMITTED UNDER THE MOLEX PART NUMBER TO IMDS (COMPANY ID#13255)
  - DESIGN - MATERIALS:
    - SEE BOM TABLE
  - DESIGN - GEOMETRY:
    - ALL GRAPHIC DATA IS BASIC (NO TOLERANCE) AND MUST BE TAKEN FROM THE DATA FILE AT ITS LATEST REVISION.
    - PRODUCT DESIGN MODEL NUMBER(S): SEE BOM TABLE
    - GEOMETRIC DIMENSIONS AND TOLERANCES PER ASME Y14.5M-2009
    - EDGES AND UNDIMENSIONED DETAILS PER ISO13715
    - CORNERS SHOWN AS SHARP TO BE R 0.2 MAX.
    - MARKED TEXT TO INCLUDE RECYCLING CODE, CAVITY ID, VENDOR IDENTIFICATION, AND CUSTOMER MATERIAL NUMBER.
      - LASER ETCHED DATE CODE  
1ST THROUGH 2ND DIGIT = CALENDAR YEAR  
3RD THROUGH 5TH DIGIT = 'DAY #' OF YEAR  
6TH THROUGH 7TH DIGIT = HOUR OF DAY  
8TH THROUGH 9TH DIGIT = MINUTE OF HOUR  
10TH THROUGH 11TH DIGIT = SECOND OF MINUTE
  - DESIGN - MANUFACTURING:
    - VISUAL DEFECTS SHALL MEET COSMETIC STANDARD PS-45499-002 (Class B)

MOLEX ASSEMBLY  
PART NO.'S

1600140001	KEY 1
1600140002	KEY 2
1600140003	KEY 3
1600140004	KEY 4

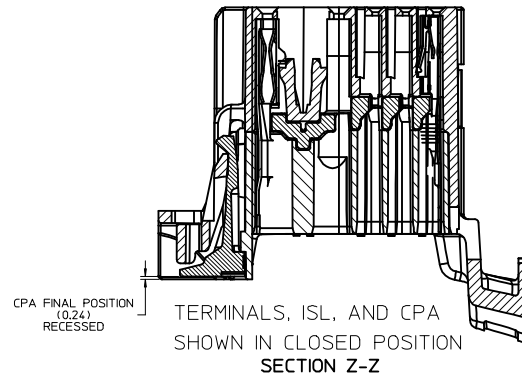
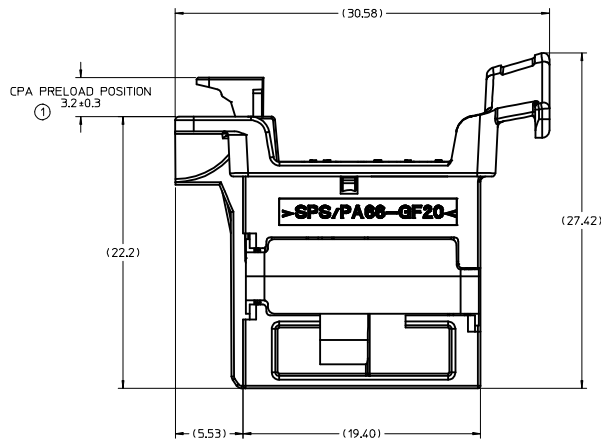
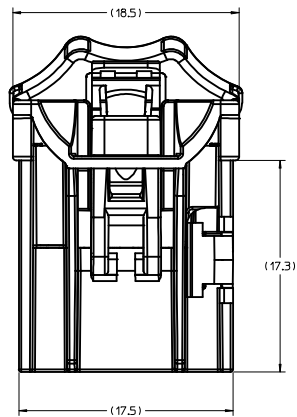
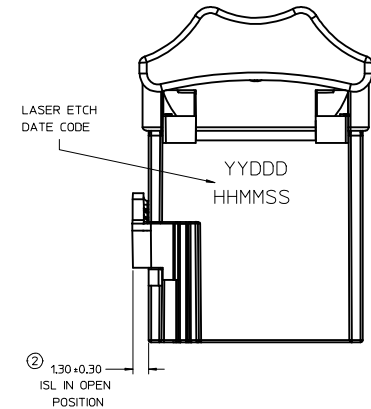
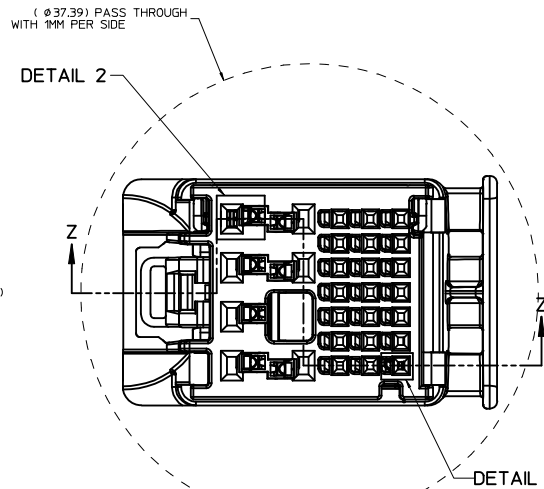
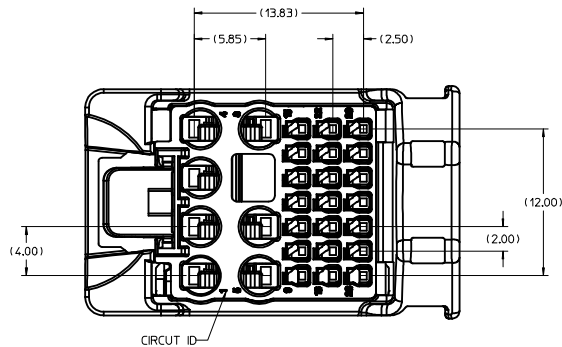
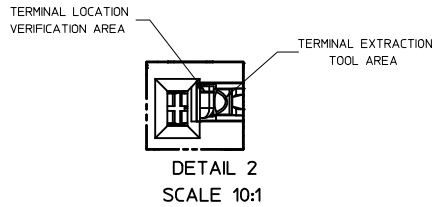
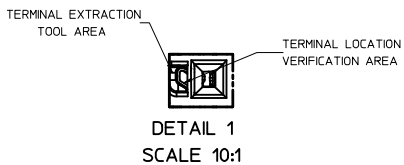
ITEM	DESCRIPTION	COLOR	RECYCLING CODE	WEIGHT (GRAMS)	NO OF ITEMS REQUIRED
1	OUTER SHROUD - KEY 1	DARK GRAY	SPS/PA66-GF20	2.9	1
2	OUTER SHROUD - KEY 2	LT GREEN A	SPS/PA66-GF20	2.9	1
3	OUTER SHROUD - KEY 3	LT GRAY	SPS/PA66-GF20	2.9	1
4	OUTER SHROUD - KEY 4	BLACK	SPS/PA66-GF20	2.9	1
5	ISL	NATURAL	SPS-GF30	0.34	1 1 1 1 1
6	CPA	NATURAL	PA66-GF50	0.08	1 1 1 1 1
7	INNER HOUSING	STONE GRAY	SPS/PA-GF20	1.48	1 1 1 1 1



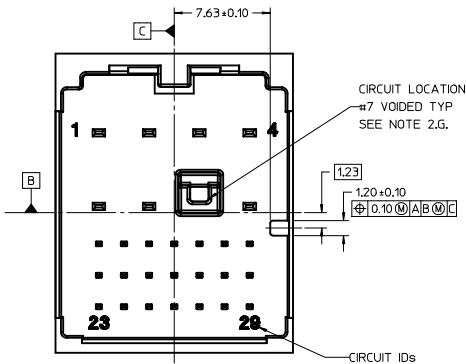
PART NUMBER	PLATING	SUPPLIER	WIRE GAGE (mm2)	TERMINAL FAMILY	WIRE SPECIFICATION
2-1703930-1	TIN PLATING	TE	0.22 - 0.35	NanoMOS SOCKET CONTACT (0.5 mm)	SAE/ J1128
1-1703930-1	TIN PLATING	TE	0.13 - 0.17	NanoMOS SOCKET CONTACT (0.5 mm)	THIN WALL INSULATION
13881789	TIN PLATING	DELPHI	0.35 - 0.5	TAXI TERM OCS 1.2	GMW 15626 INSULATION TYPE FLR (REGULAR THIN WALL)
13881788	TIN PLATING	DELPHI	0.75 - 0.8	TAXI TERM OCS 1.2	
SMSA-A031T-M1.2	TIN PLATING	JST	0.5 - 0.75	MSA 1.2mm TERMINAL	
SMSA-A041T-M1.2	TIN PLATING	JST	1.0 - 1.5	MSA 1.2mm TERMINAL	

A	UAU2017-0137 SAP # 10789287 JCONDON 08/13/2016
7	UAU2016-1182 SAP # 10762453 JCONDON 02/08/2016
6	UAU2015-1899 SAP # 10698159 JCONDON 06/17/2015
5	UAU2015-1606 SAP # 10685685 JCONDON 04/23/2015
4	UAU2015-0824 SAP # XXXXXX JCONDON 12/05/2014
3	UAU2014-1923 SAP # XXXXXXXX BSCUDDER 05/19/2014
2	UAU2014-1726 SAP # XXXXXXXX CBOWDEN 10/22/2013
1	UAU2014-0635 SAP # XXXXXXXX KDEKOSKI 10/09/2013

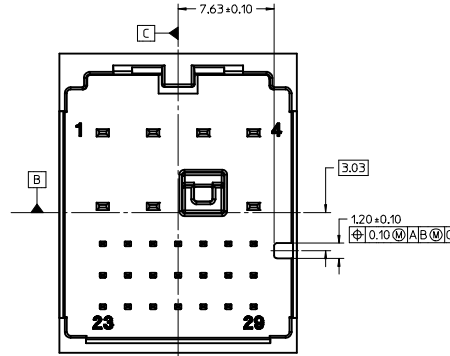
SEE REV COLUMN IEC NO. UAU2017-0137 DRAWN BY: CONDON CHYD: APPROVAL: 2016/08/16	QUALITY SYMBOLS	GENERAL TOLERANCES (UNLESS SPECIFIED)	DIMENSION STYLE	SCALE	THIRD ANGLE PROJECTION
	▽=0	4 PLACES ± --- INCH	MM ONLY	5:1	METRIC
	▽=0	3 PLACES ± ---			
	▽=0	2 PLACES ± 0.3			
		1 PLACE ± 0.3			
		0 PLACE ± 0.3			
		ANGULAR ± 3			
		DRAFT WHERE APPLICABLE MUST REMAIN WITHIN DIMENSIONS			
			MATERIAL NO.	DESIGN UNITS	TITLE
			CHARTED	MM	28WAY STAK50H HYBRID CONNECTOR ASSEMBLY
					<b>molex</b>
					DOCUMENT NO. SD-160014-0001
					SHEET NO. 1 OF 2
					THIS DRAWING CONTAINS INFORMATION THAT IS PROPRIETARY TO MOLEX INCORPORATED AND SHOULD NOT BE USED WITHOUT WRITTEN PERMISSION



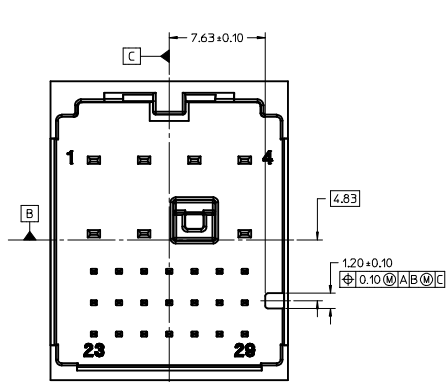
SEE SHEET 1 IEC NO. UAU2017-0137 DRAWN/CONDON CHKD: APPR:RBALMAN 2016/08/16	QUALITY SYMBOLS	GENERAL TOLERANCES (UNLESS SPECIFIED)	DIMENSION STYLE	SCALE	DESIGN UNITS	THIRD ANGLE PROJECTION	
	∇=0 ∇=0 ∇=0	4 PLACES ± --- ± --- 3 PLACES ± --- ± --- 2 PLACES ± 0.3 ± --- 1 PLACE ± 0.3 ± --- 0 PLACE ± 0.3 ± ---	mm INCH ANGULAR ± DRAFT WHERE APPLICABLE MUST REMAIN WITHIN DIMENSIONS	MM ONLY DRAWN BY DATE KDEKOSKI 2013/10/09 CHECKED BY DATE JCONDON 2013/12/06 APPROVED BY DATE KDEKOSKI 2014/06/16	5:1	METRIC	TITLE 28WAY STAK50H HYBRID CONNECTOR ASSEMBLY
	MATERIAL NO.	SIZE	DOCUMENT NO.	molex SD-160014-0001			
	SHEET NO. 2 OF 2			THIS DRAWING CONTAINS INFORMATION THAT IS PROPRIETARY TO MOLEX INCORPORATED AND SHOULD NOT BE USED WITHOUT WRITTEN PERMISSION			



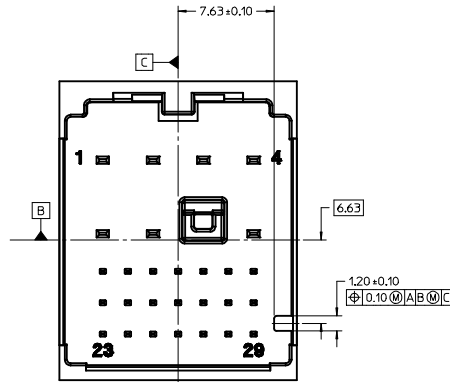
INTERFACE KEY #1  
MATING CONNECTOR COLOR: DARK GRAY



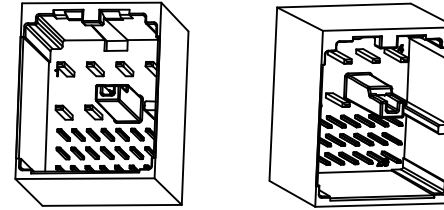
INTERFACE KEY #2  
MATING CONNECTOR COLOR: LT GREEN A



INTERFACE KEY #3  
MATING CONNECTOR COLOR: LIGHT GRAY



INTERFACE KEY #4  
MATING CONNECTOR COLOR: BLACK

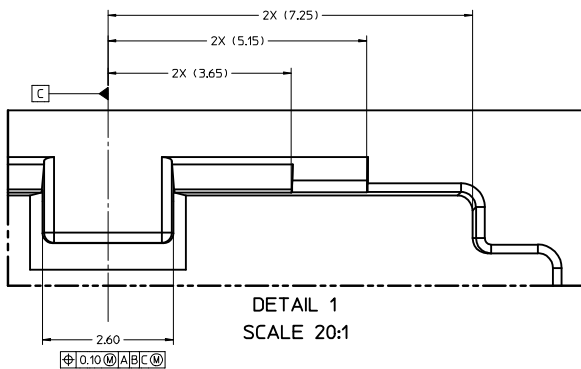


NOTES: VALID UNLESS OTHERWISE SPECIFIED

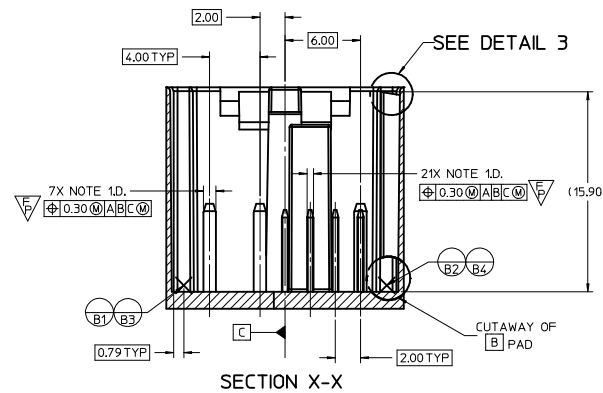
- DESIGN - MATERIALS:
  - RESIN MATERIAL: PBT-GF30 OR SPS-GF30 OR EQUIVALENT
  - PIN/BLADE MATERIAL: ACCORDING TO USCAR DRAWING EWCAP-001 NOTE B2.
  - PLATING: ACCORDING TO USCAR DRAWING EWCAP-001 TIN REFLOW WITH UNDERPLATE.
  - PIN GEOMETRY ACCORDING TO USCAR DRAWING EWCAP-001 (120-T002 & 050-T001)
- DESIGN - GEOMETRY:
  - ALL GRAPHIC DATA IS BASIC (NO TOLERANCE) AND MUST BE TAKEN FROM THE DATA FILE AT ITS LATEST REVISION.
  - PRODUCT DESIGN MODEL NUMBER(S): SEE BOM TABLE
  - GEOMETRIC DIMENSIONS AND TOLERANCES PER ASME Y14.5M-2009
  - GENERAL TOLERANCES:
    - LINEAR: PER DIN 16901 LINEAR CODE B FOR PRECISION ENGINEERING
    - ANGULAR: ±3°
  - EDGES AND UNDIMENSIONED DETAILS PER ISO13715
  - CORNERS SHOWN AS SHARP TO BE R 0.2 MAX.
  - CIRCUIT LOCATION #7 VOIDED FOR 28WAY INTERFACE
- DESIGN - MANUFACTURING:
  - DRAFT TO BE WITHIN TOLERANCE.

A1	UAU2016-1133 SAP # 10762453 JCONDON 02/02/2016
A	UAU2015-1973 SAP # 10701371 JCONDON 06/30/2015
6	UAU2015-1446 SAP # 10681629 JCONDON 03/25/2015
5	UAU2015-1212 SAP # 10674908 JCONDON 02/06/2015
4	UAU2015-0634 SAP # 10661788 JCONDON 10/22/2014
3	UAU2014-1679 SAP # XXXXXXXX BSCUDDER 04/28/2014
2	UAU2014-1221 SAP # XXXXXXXX MYOUNG01 01/21/2014
1	UAU2014-0715 SAP # XXXXXXXX MYOUNG01 11/14/2013

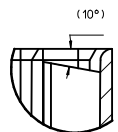
SEE REV COLUMN SEC NO: UAU2016-1982 DRAWN: JCONDON CHKD: APPR: KDEKOSKI REV: A1	QUALITY SYMBOLS	GENERAL TOLERANCES (UNLESS SPECIFIED)	DIMENSION STYLE MM ONLY	SCALE 5:1	DESIGN UNITS METRIC	THIRD ANGLE PROJECTION
	▽=0	mm INCH	DRAWN BY DATE MYOUNG01 2013/11/14	TITLE 28WAY STAK50H INTERFACE DRAWING	DOCUMENT NO. SD-160014-002	SHEET NO. 1 OF 3
	▽=0	4 PLACES ±	CHECKED BY DATE JCONDON 2013/12/04	MATERIAL NO. N/A		
	▽=0	3 PLACES ±	APPROVED BY DATE KDEKOSKI 2014/01/02			
▽=0	2 PLACES ±	DRAFT WHERE APPLICABLE MUST REMAIN WITHIN DIMENSIONS				
	1 PLACE ±		SIZE A1	THIS DRAWING CONTAINS INFORMATION THAT IS PROPRIETARY TO MOLEX INCORPORATED AND SHOULD NOT BE USED WITHOUT WRITTEN PERMISSION		



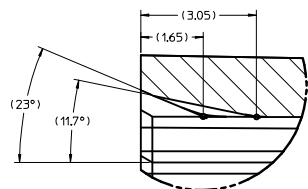
DETAIL 1  
SCALE 20:1



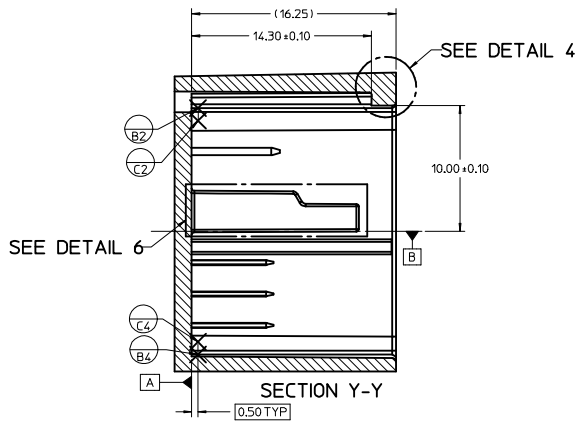
SECTION X-X



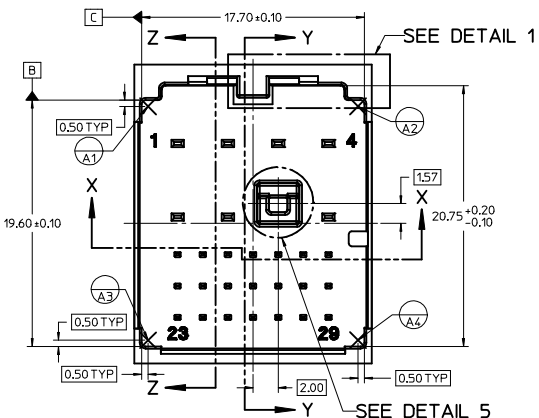
DETAIL 3  
SCALE 15:1



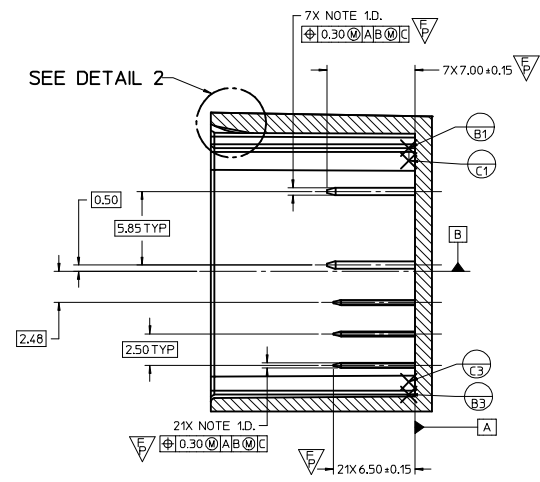
DETAIL 2  
SCALE 15:1



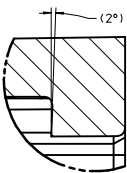
SECTION Y-Y



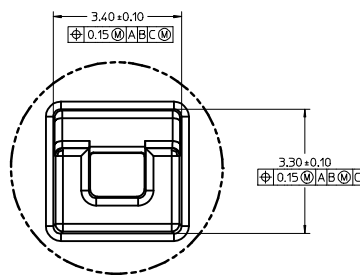
SECTION Z-Z



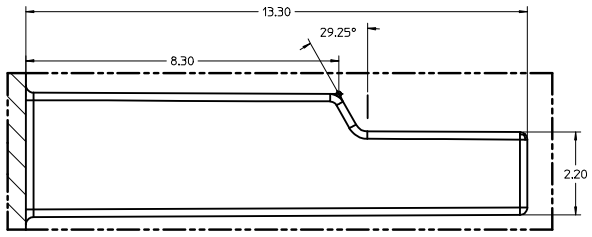
SECTION Z-Z



DETAIL 4  
SCALE 15:1



DETAIL 5  
SCALE 15:1

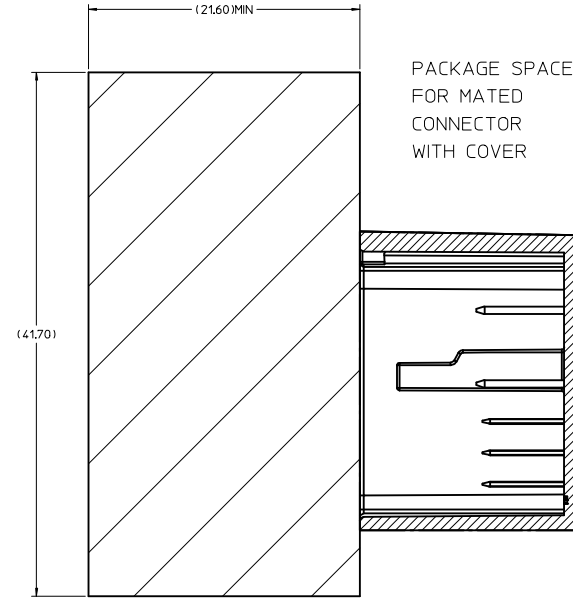
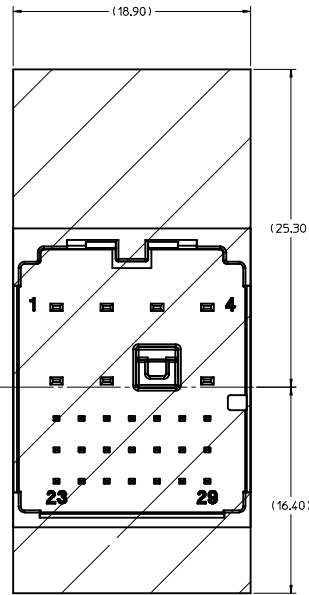
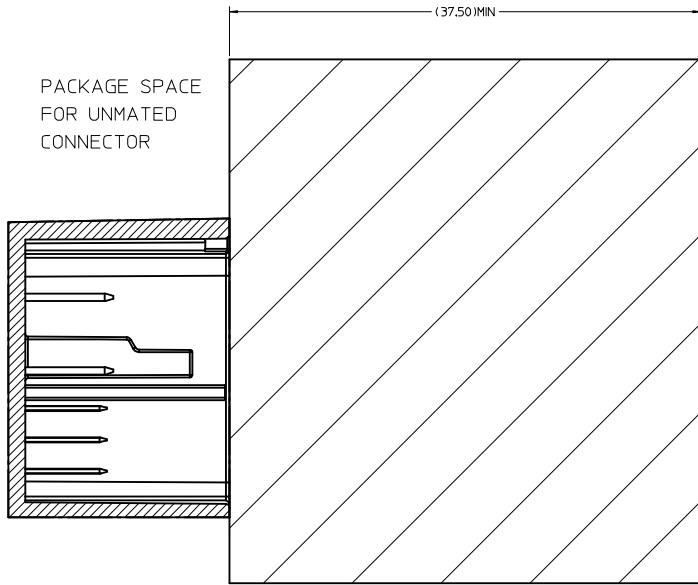


DETAIL 6  
SCALE 15:1

<b>SEE SHEET 1</b> EC NO: UA02016-1062 DRAWN: JCONDON CHKD: APPR: KDEKOSKI 2016/03/24	QUALITY SYMBOLS	GENERAL TOLERANCES (UNLESS SPECIFIED)	DIMENSION STYLE	SCALE	DESIGN UNITS	THIRD ANGLE PROJECTION
	▽=0	mm	MM ONLY	5:1	METRIC	☑
	▽=0	INCH				
	▽=6					
	4 PLACES ±	ANGULAR ±	DRAWN BY	DATE	TITLE	
	3 PLACES ±	MUST REMAIN WITHIN DIMENSIONS	MYOUNG01	2013/11/14	28WAY STAK50H INTERFACE DRAWING	
	2 PLACES ±		CHECKED BY	DATE		
	1 PLACE ±		JCONDON	2013/12/04		
	0 PLACE ±		APPROVED BY	DATE		
			KDEKOSKI	2014/01/02		
			MATERIAL NO.		DOCUMENT NO.	SHEET NO.
			N/A		SD-160014-002	2 OF 3
			THIS DRAWING CONTAINS INFORMATION THAT IS PROPRIETARY TO MOLEX INCORPORATED AND SHOULD NOT BE USED WITHOUT WRITTEN PERMISSION			

PACKAGE SPACE FOR CONNECTOR

PACKAGE SPACE FOR UNMATED CONNECTOR



PACKAGE SPACE FOR MATED CONNECTOR WITH COVER

SEE SHEET 1 SEC NO: UA02016-182 DRAWN: JCONDON CHKD: APPR:KDEKOSKI A1	2016/02/02 2016/03/24 DESCRIPTION	QUALITY SYMBOLS	GENERAL TOLERANCES (UNLESS SPECIFIED)	DIMENSION STYLE	SCALE	DESIGN UNITS	THIRD ANGLE PROJECTION
		∇=0 ∇=0 ∇=0 ∇=0	mm INCH 4 PLACES ± 3 PLACES ± 2 PLACES ± 1 PLACE ± 0 PLACE ± ANGULAR ± DRAWN WHERE APPLICABLE MUST REMAIN WITHIN DIMENSIONS	MM ONLY	5:1	METRIC	THIRD ANGLE PROJECTION
		DRAWN BY: MYOUNG01 CHECKED BY: JCONDON APPROVED BY: KDEKOSKI	DATE: 2013/11/14 DATE: 2013/12/04 DATE: 2014/01/02	MATERIAL NO: N/A	TITLE: 28WAY STAK50H INTERFACE DRAWING		DOCUMENT NO: SD-160014-002
						moxlex	SHEET NO. 3 OF 3