



Chipsmall Limited consists of a professional team with an average of over 10 year of expertise in the distribution of electronic components. Based in Hongkong, we have already established firm and mutual-benefit business relationships with customers from,Europe,America and south Asia,supplying obsolete and hard-to-find components to meet their specific needs.

With the principle of "Quality Parts,Customers Priority,Honest Operation,and Considerate Service",our business mainly focus on the distribution of electronic components. Line cards we deal with include Microchip,ALPS,ROHM,Xilinx,Pulse,ON,Everlight and Freescale. Main products comprise IC,Modules,Potentiometer,IC Socket,Relay,Connector.Our parts cover such applications as commercial,industrial, and automotives areas.

We are looking forward to setting up business relationship with you and hope to provide you with the best service and solution. Let us make a better world for our industry!



Contact us

Tel: +86-755-8981 8866 Fax: +86-755-8427 6832

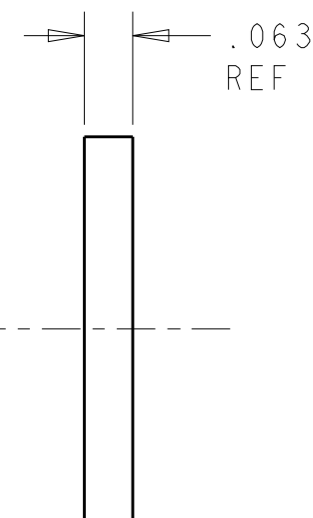
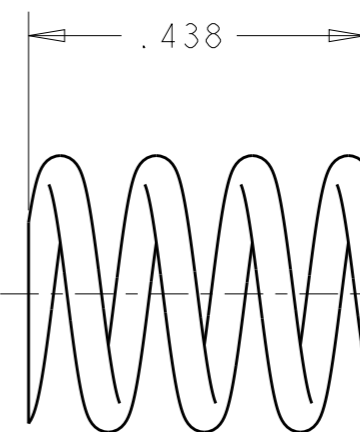
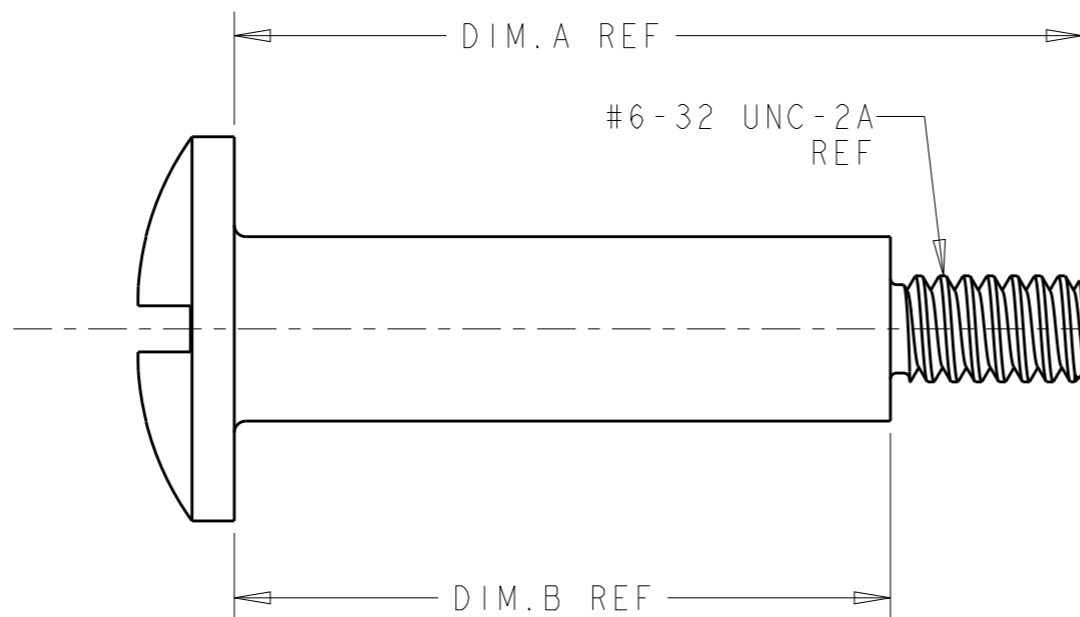
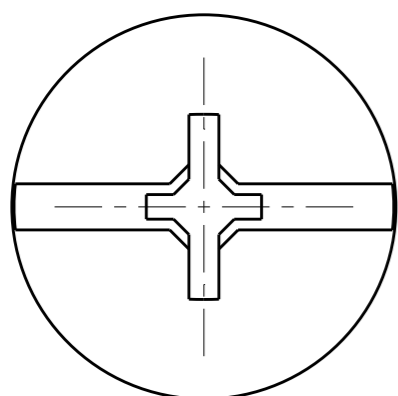
Email & Skype: info@chipsmall.com Web: www.chipsmall.com

Address: A1208, Overseas Decoration Building, #122 Zhenhua RD., Futian, Shenzhen, China



THIS DRAWING IS UNPUBLISHED. RELEASED FOR PUBLICATION 20
 © COPYRIGHT 20 BY - ALL RIGHTS RESERVED.

LOC	DIST	REVISIONS				
P	LTR	DESCRIPTION	DATE	DWN	APVD	
GP	00	A4	ADD NEW DASH NUMBER -7, -8	21FEB2013	CZ SZ	
		A5	REV PER ECR-13-007370	03MAY2013	CZ SZ	



SHOULDER SCREW

COMPRESSION SPRING

FLAT WASHER


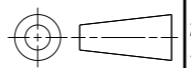
- ① ONE(1) KIT CONSISTS OF TWO(2) EACH OF EACH PART SHOWN.
- ② BULK PACKAGED. KITS TO BE ORDERED IN MULTIPLES OF 100.
- ③ SHOULDER SCREW: STAINLESS STEEL
 COMPRESSION SPRING: MUSIC WIRE
 FLAT WASHER: STAINLESS STEEL

THIS DRAWING IS A CONTROLLED DOCUMENT.		DWN P BRANDBERG 17MAR2013	TE Connectivity	
DIMENSIONS: mm		CHK M. CORRELL 21MAR2013		
TOLERANCES UNLESS OTHERWISE SPECIFIED:		APVD -	NAME HARDWARE KIT PANEL MOUNT MULTI BEAM	
0 PLC ±-		PRODUCT SPEC -	SIZE A3	
1 PLC ±-		APPLICATION SPEC -	CAGE CODE 00779	DRAWING NO G-1600914
2 PLC ±-		WEIGHT -	RESTRICTED TO -	
3 PLC ±.005		CUSTOMER DRAWING		
4 PLC ±.0020		SCALE 4:1		
ANGLES ±2°		SHEET 1 OF 2		
MATERIAL		REV A5		
FINISH				

THIS DRAWING IS UNPUBLISHED. RELEASED FOR PUBLICATION 20
 © COPYRIGHT 20 BY - ALL RIGHTS RESERVED.

LOC	DIST	REVISIONS					
GP	00	P	LTR	DESCRIPTION	DATE	DWN	APVD
			-	SEE SHEET 1	-	-	-

DIM. C	DIM. B	DIM. A	DESCRIPTION	PART NUMBER
.405	.854	1.104	△ ₂ BULK, STANDARD SPRING	1600914-8
.405	.854	1.104	△ ₁ KIT, STANDARD SPRING	1600914-7
.500	.644	.894	△ ₂ BULK, STANDARD SPRING	1600914-6
.500	.644	.894	△ ₁ KIT, STANDARD SPRING	1600914-5
.500	.854	1.104	△ ₂ BULK, HIGH FORCE SPRING	1600914-4
.500	.854	1.104	△ ₁ KIT, HIGH FORCE SPRING	1600914-3
.500	.854	1.104	△ ₂ BULK, STANDARD SPRING	1600914-2
.500	.854	1.104	△ ₁ KIT, STANDARD SPRING	1600914-1

THIS DRAWING IS A CONTROLLED DOCUMENT.		DWN P BRANDBERG 17MAR2013	 TE Connectivity	
		CHK M. CORRELL 21MAR2013		
DIMENSIONS: mm 		TOLERANCES UNLESS OTHERWISE SPECIFIED: 0 PLC ±- 1 PLC ±- 2 PLC ±- 3 PLC ±.005 4 PLC ±.0020 ANGLES ±2°		NAME HARDWARE KIT PANEL MOUNT MULTI BEAM
MATERIAL -		FINISH -		PRODUCT SPEC - APPLICATION SPEC - WEIGHT -
		CUSTOMER DRAWING		SIZE A3 CAGE CODE 00779 DRAWING NO. 1600914 RESTRICTED TO -
		SCALE 4:1		SHEET 2 OF 2 REV A5