



Chipsmall Limited consists of a professional team with an average of over 10 year of expertise in the distribution of electronic components. Based in Hongkong, we have already established firm and mutual-benefit business relationships with customers from,Europe,America and south Asia,supplying obsolete and hard-to-find components to meet their specific needs.

With the principle of “Quality Parts,Customers Priority,Honest Operation,and Considerate Service”,our business mainly focus on the distribution of electronic components. Line cards we deal with include Microchip,ALPS,ROHM,Xilinx,Pulse,ON,Everlight and Freescale. Main products comprise IC,Modules,Potentiometer,IC Socket,Relay,Connector.Our parts cover such applications as commercial,industrial, and automotives areas.

We are looking forward to setting up business relationship with you and hope to provide you with the best service and solution. Let us make a better world for our industry!



Contact us

Tel: +86-755-8981 8866 Fax: +86-755-8427 6832

Email & Skype: info@chipsmall.com Web: www.chipsmall.com

Address: A1208, Overseas Decoration Building, #122 Zhenhua RD., Futian, Shenzhen, China



"High Frequency Ceramic Solutions"

Preliminary

1.6 GHz Antenna

P/N 1600AT45A0040

Detail Specification: 11/18/08

Page 1 of 3

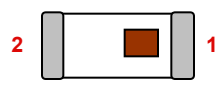
General Specifications

Part Number	1600AT45A0040
Frequency Range	1580 - 1620 Mhz
Peak Gain	0.0 dBi typ. (XZ-Total)
Average Gain	-1.0 dBi typ. (XZ-Total)
Return Loss	9.5 dB min.

Input Power	2W max.
Impedance	50 Ω
Reel Quantity	1,000
Operating Temperature	-40 to +85°C
Storage Temperature	+5 to +35°C, Humidity: 45-75%RH, 12 mos. Max

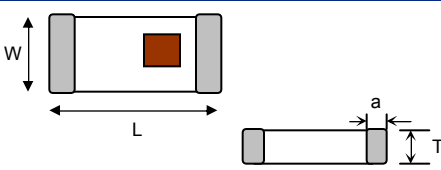
P/N Suffix	Packaging Style	Bulk	Suffix = S	Eg. 1600AT45A0040S
		T & R	Suffix = E	Eg. 1600AT45A0040E
	Termination Style	100% Tin	Suffix = None	Eg. 1600AT45A0040(E or S)
		Tin / Lead	Please consult Factory	

Terminal Configuration	
No.	Function
1	Feeding Point
2	NC



Mechanical Dimensions

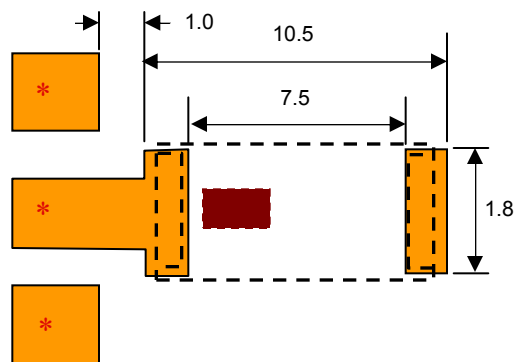
	In	mm
L	0.374 ± 0.008	9.50 ± 0.20
W	0.079 ± 0.008	2.00 ± 0.20
T	0.047 +.004/-.008	1.20 +0.1/-0.2
a	0.020 ± 0.012	0.50 ± 0.30



Mounting Considerations

Mount these devices with brown mark facing up. Units: mm

* Line width should be designed to provide 50Ω impedance, depending on PCB material and thickness.



Johanson Technology, Inc. reserves the right to make design changes without notice.
All sales are subject to Johanson Technology, Inc. terms and conditions.



www.johansontechology.com

4001 Calle Tecate • Camarillo, CA 93012 • TEL 805.389.1166 FAX 805.389.1821

2003 Johanson Technology, Inc. All Rights Reserved

"High Frequency Ceramic Solutions"

Preliminary

1.6 GHz Antenna

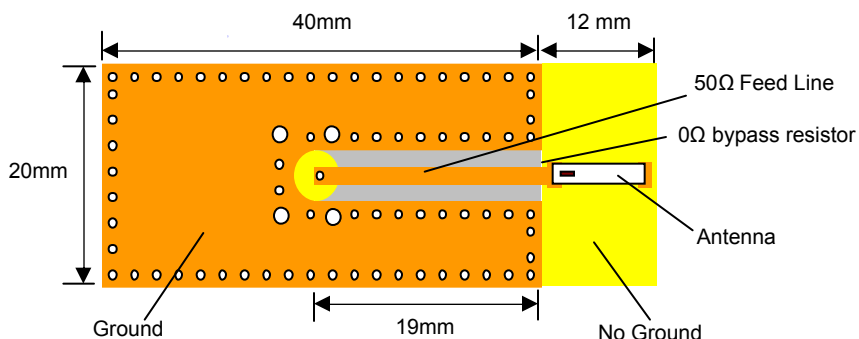
P/N 1600AT45A0040

Detail Specification: 11/18/08

Page 2 of 3

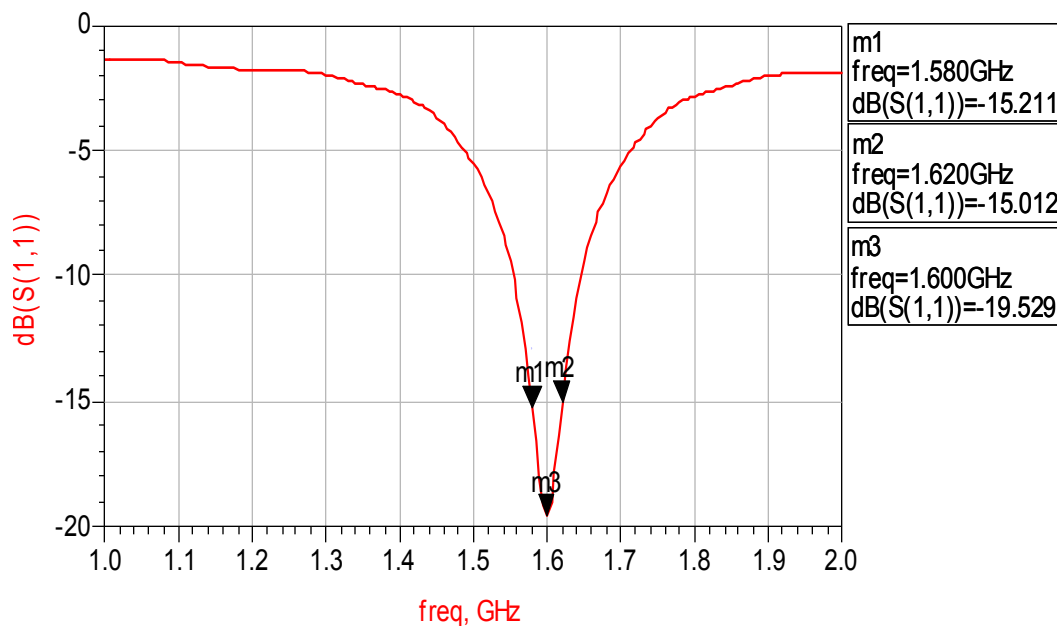
Typical Electrical Characteristics (T=25°C)

Test Board



Return Loss

a) Without Matching Circuits



Johanson Technology, Inc. reserves the right to make design changes without notice.

All sales are subject to Johanson Technology, Inc. terms and conditions.



"High Frequency Ceramic Solutions"

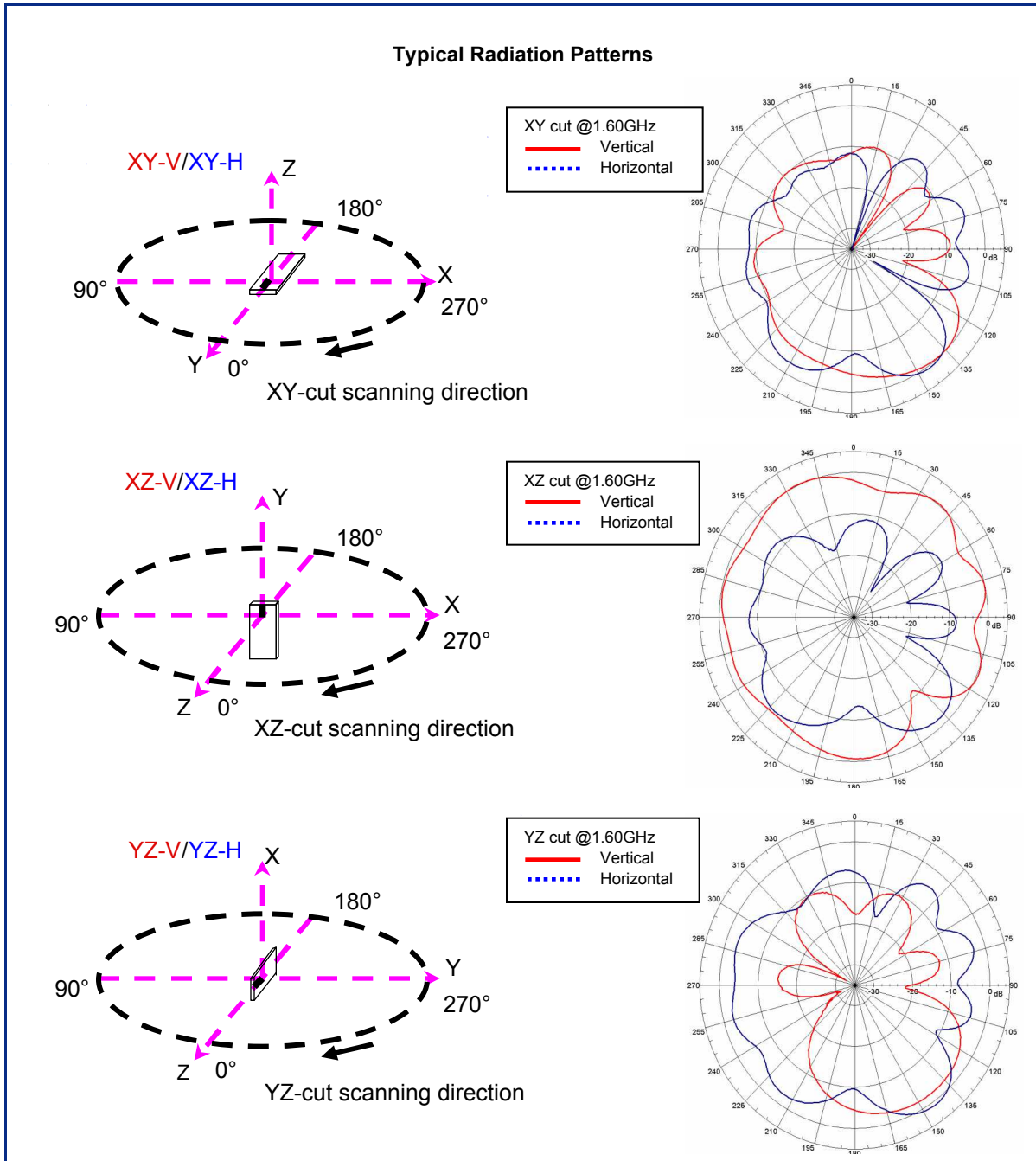
Preliminary

1.6 GHz Antenna

P/N 1600AT45A0040

Detail Specification: 11/18/08

Page 3 of 3



Johanson Technology, Inc. reserves the right to make design changes without notice.

All sales are subject to Johanson Technology, Inc. terms and conditions.



www.johansontechnology.com

4001 Calle Tecate • Camarillo, CA 93012 • TEL 805.389.1166 FAX 805.389.1821

2003 Johanson Technology, Inc. All Rights Reserved