



Chipsmall Limited consists of a professional team with an average of over 10 year of expertise in the distribution of electronic components. Based in Hongkong, we have already established firm and mutual-benefit business relationships with customers from,Europe,America and south Asia,supplying obsolete and hard-to-find components to meet their specific needs.

With the principle of “Quality Parts,Customers Priority,Honest Operation,and Considerate Service”,our business mainly focus on the distribution of electronic components. Line cards we deal with include Microchip,ALPS,ROHM,Xilinx,Pulse,ON,Everlight and Freescale. Main products comprise IC,Modules,Potentiometer,IC Socket,Relay,Connector.Our parts cover such applications as commercial,industrial, and automotives areas.

We are looking forward to setting up business relationship with you and hope to provide you with the best service and solution. Let us make a better world for our industry!



Contact us

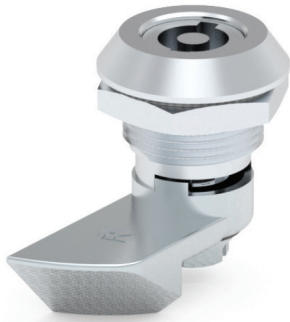
Tel: +86-755-8981 8866 Fax: +86-755-8427 6832

Email & Skype: info@chipsmall.com Web: www.chipsmall.com

Address: A1208, Overseas Decoration Building, #122 Zhenhua RD., Futian, Shenzhen, China



QUARTER TURN - SPRING CAM



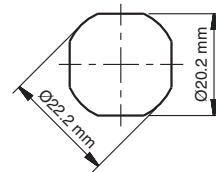
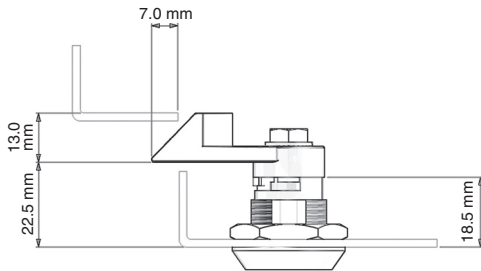
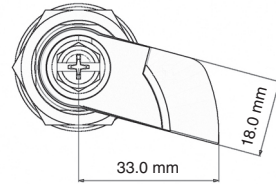
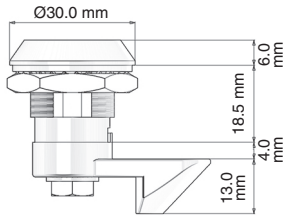
*Example with cam. Cam sold separately.

Specifications

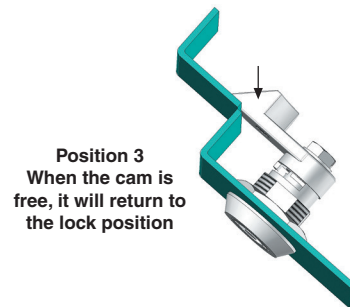
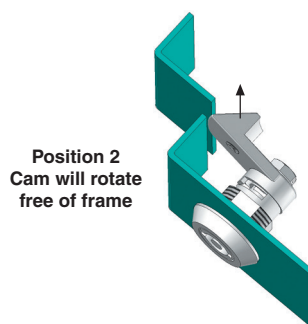
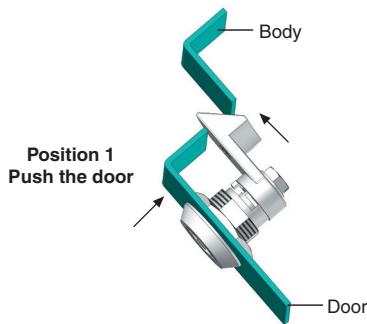
- Material:
 - Housing: Zinc Alloy (Zamak) DIN-EN 1774-ZnAl4Cu1
 - Cylinder: Zinc Alloy (Zamak) DIN-EN 1774-ZnAl4Cu1
 - Gasket: Rubber
 - Finish: Chrome

Features

- Spring-loaded cam provides push-to-close action
- Distance between inside of lock face and front of cam fixed at 22.5 mm
- There is no IP 65 version of this lock, due to spring loaded cam
- Applications: Electric panels, machinery covers



Cut Out



Driver/Head Style



3mm Double Bit

Item Number	Zinc Alloy / Chrome	Zinc Alloy / Black	Nylon / Black	Driver
06011300				3mm Double Bit

Item Number	Zinc Alloy / Chrome	Driver	Hand
160113001		3mm Double Bit	Right
160113002		3mm Double Bit	Left