



Chipsmall Limited consists of a professional team with an average of over 10 year of expertise in the distribution of electronic components. Based in Hongkong, we have already established firm and mutual-benefit business relationships with customers from,Europe,America and south Asia,supplying obsolete and hard-to-find components to meet their specific needs.

With the principle of "Quality Parts,Customers Priority,Honest Operation,and Considerate Service",our business mainly focus on the distribution of electronic components. Line cards we deal with include Microchip,ALPS,ROHM,Xilinx,Pulse,ON,Everlight and Freescale. Main products comprise IC,Modules,Potentiometer,IC Socket,Relay,Connector.Our parts cover such applications as commercial,industrial, and automotives areas.

We are looking forward to setting up business relationship with you and hope to provide you with the best service and solution. Let us make a better world for our industry!



Contact us

Tel: +86-755-8981 8866 Fax: +86-755-8427 6832

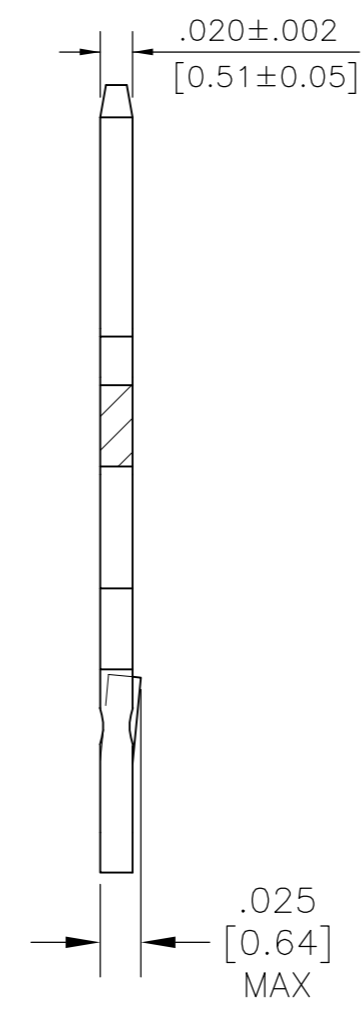
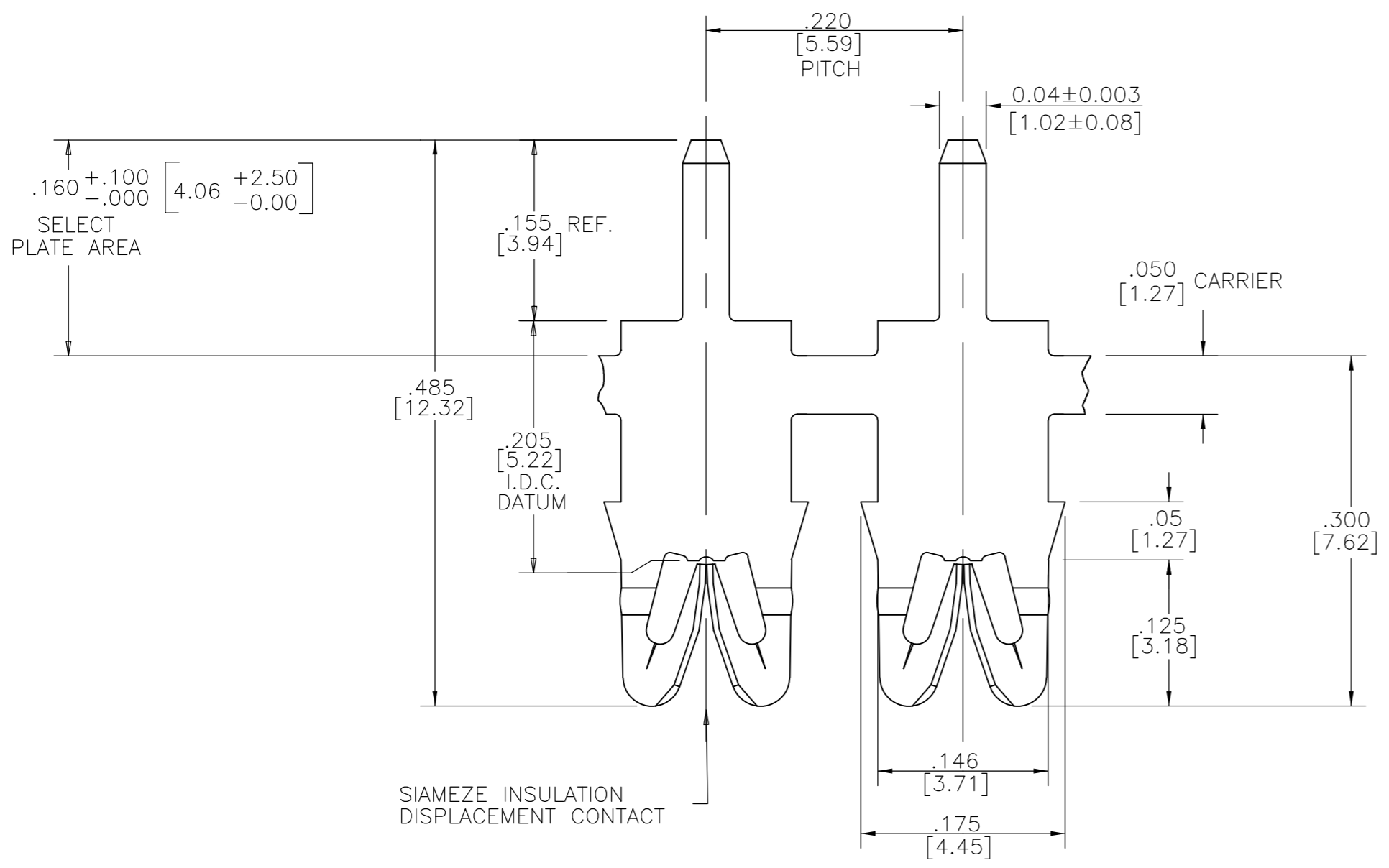
Email & Skype: info@chipsmall.com Web: www.chipsmall.com

Address: A1208, Overseas Decoration Building, #122 Zhenhua RD., Futian, Shenzhen, China

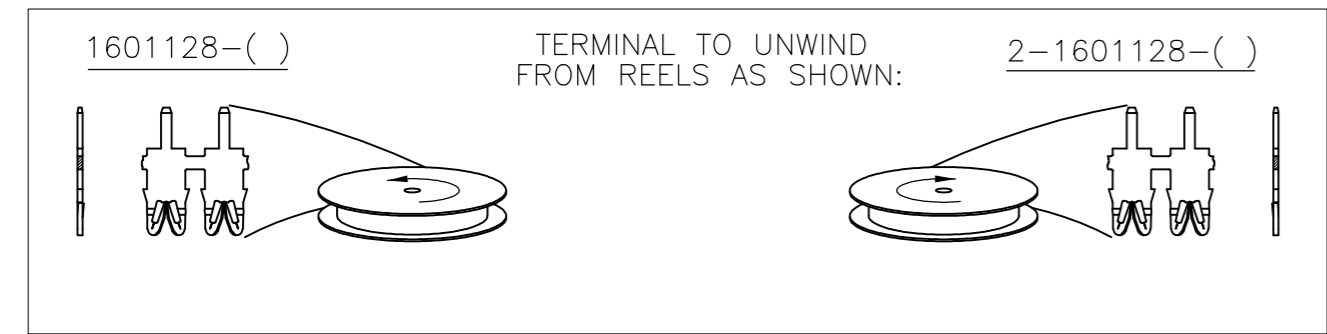
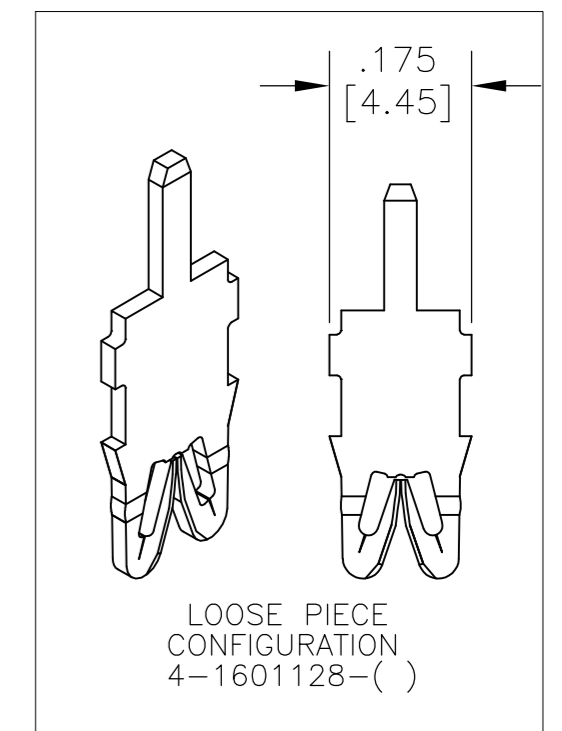


THIS DRAWING IS UNPUBLISHED. RELEASED FOR PUBLICATION
 © COPYRIGHT - By - ALL RIGHTS RESERVED.

LOC		DIST		REVISIONS			
P	LTR	DESCRIPTION		DATE	DWN	APVD	
AF	50	D3		REVISED PER ECR-13-003857	09MAR13	KH GJ	



- 1 SPECIFICATIONS:
MAGNET WIRE #27 - #36 AWG,
0.38mm (.015") - 0.13mm (.005") DIA, COPPER.
- 2 POCKET RECOMMENDATION: #1601425
- 3 TERMINAL APPLICATION TO COMPLY WITH TYCO
ELECTRONICS SPECIFICATION 114-13166 FIGURE 7.
- 4 TERMINALS SUPPLIED ON REELS,
CAN BE SUPPLIED LOOSE PIECE,
- 5 TWO (2) TERMINALS SHOWN FOR
ILLUSTRATION PURPOSES ONLY
- 6 PRE-PRODUCTION - FASR REQUIRED.



SUPERSEDED BY 2-1601128-3

SUPERSEDED BY 1601128-3

SELECTIVE TIN PLATE OVER NICKEL	-	2-1601128-3
SELECTIVE POST TIN-LEAD PLATE OVER NICKEL	150-026-119	2-1601128-2
UNPLATED	150-026-000	2-1601128-1
PRE-PLATED TIN OVER NICKEL	-	1601128-4
SELECTIVE TIN PLATE OVER NICKEL	-	1601128-3
SELECTIVE POST TIN-LEAD PLATE OVER NICKEL	150-025-119	1601128-2
UNPLATED	150-025-000	1601128-1
FINISH	REFERENCE PART NUMBER	TYCO PART NUMBER

THIS DRAWING IS A CONTROLLED DOCUMENT.		DWN J.WELLER 11JAN2002	
DIMENSIONS: INCHES [mm]		CHK M.FEHER 11JAN2002	
TOLERANCES UNLESS OTHERWISE SPECIFIED:		APVD K.RANDOLPH 11JAN2002	
0 PLC ± - 1 PLC ± - 2 PLC ± .01[0.25] 3 PLC ± .005[0.13] 4 PLC ± - ANGLES ± 2°		NAME PRODUCT SPEC 108-2244 APPLICATION SPEC	
MATERIAL BRASS, SPRING HARD	FINISH SEE TABLE	WEIGHT -	SIZE A2 CAGE CODE 00779 DRAWING NO C=1601128 RESTRICTED TO -
CUSTOMER DRAWING		SCALE 1:3	SHEET 1 of 1 REV D3