



Chipsmall Limited consists of a professional team with an average of over 10 year of expertise in the distribution of electronic components. Based in Hongkong, we have already established firm and mutual-benefit business relationships with customers from,Europe,America and south Asia,supplying obsolete and hard-to-find components to meet their specific needs.

With the principle of “Quality Parts,Customers Priority,Honest Operation,and Considerate Service”,our business mainly focus on the distribution of electronic components. Line cards we deal with include Microchip,ALPS,ROHM,Xilinx,Pulse,ON,Everlight and Freescale. Main products comprise IC,Modules,Potentiometer,IC Socket,Relay,Connector.Our parts cover such applications as commercial,industrial, and automotives areas.

We are looking forward to setting up business relationship with you and hope to provide you with the best service and solution. Let us make a better world for our industry!



Contact us

Tel: +86-755-8981 8866 Fax: +86-755-8427 6832

Email & Skype: info@chipsmall.com Web: www.chipsmall.com

Address: A1208, Overseas Decoration Building, #122 Zhenhua RD., Futian, Shenzhen, China



Device connector, front mounting - RC-19S1N122000 - 1602786

Please be informed that the data shown in this PDF Document is generated from our Online Catalog. Please find the complete data in the user's documentation. Our General Terms of Use for Downloads are valid (<http://phoenixcontact.com/download>)




Device connector for front wall, straight, shielded: yes, Screw locking, M23, Number of positions: 16+3, Type of contact: Socket, Solder connection, Flat gasket, 4xØ2,7

The figure shows the 12-pos. product version



Key Commercial Data

| | |
|--------------|---|
| Packing unit | 40 STK |
| GTIN |  4 046356 241571 |
| GTIN | 4046356241571 |

Technical data

Data of the insulating body

| | |
|---|----------------------|
| Coding | N |
| Insertion/withdrawal cycles mechanical | 50 |
| Contact connection method | Solder connection |
| Type of contacts | Socket |
| Number of positions | 19 |
| Contact diameter of power contacts | 1.5 mm |
| Litz wire cross section of power contacts min. | 0.08 mm ² |
| Litz wire cross section of power contacts max. | 1 mm ² |
| Nominal current per power contact at 25°C | 10 A |
| Nominal voltage, power contact | 150 V |
| Rated surge voltage | 1.5 kV |
| Contact diameter of signal contacts | 1 mm |
| Litz wire cross section of signal contacts min. | 0.08 mm ² |
| Litz wire cross section of signal contacts max. | 1 mm ² |
| Nominal current per signal contact at 25°C | 8 A |
| Nominal voltage, signal contact | 150 V |

Device connector, front mounting - RC-19S1N122000 - 1602786

Technical data

Data of the insulating body

| | |
|----------------------|----|
| Overvoltage category | II |
| Degree of pollution | 3 |

Housing data

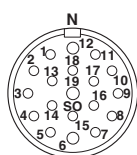
| | |
|--|---|
| Note | Order information: Order contact inserts separately |
| Housing material | Metal |
| Type of locking | Screw locking |
| Degree of protection (when plugged in) | IP67 |
| Thread type | M23 |

Environmental Product Compliance

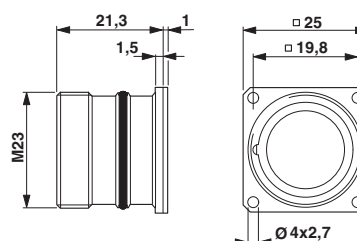
| | |
|------------|---|
| China RoHS | Environmentally Friendly Use Period = 50 |
| | For details about hazardous substances go to tab "Downloads", Category "Manufacturer's declaration" |

Drawings

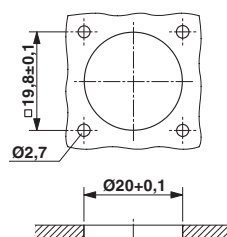
Schematic diagram



Dimensional drawing



Dimensional drawing



Installation dimensions
Flat gasket, radial O-ring

Approvals

Approvals

Device connector, front mounting - RC-19S1N122000 - 1602786


Approvals

Approvals

EAC

Ex Approvals

Approval details

| | | |
|-----|---|---------|
| EAC |  | B.01742 |
|-----|---|---------|

Phoenix Contact 2017 © - all rights reserved
<http://www.phoenixcontact.com>

PHOENIX CONTACT GmbH & Co. KG
Flachsmarktstr. 8
32825 Blomberg
Germany
Tel. +49 5235 300
Fax +49 5235 3 41200
<http://www.phoenixcontact.com>