



Chipsmall Limited consists of a professional team with an average of over 10 year of expertise in the distribution of electronic components. Based in Hongkong, we have already established firm and mutual-benefit business relationships with customers from,Europe,America and south Asia,supplying obsolete and hard-to-find components to meet their specific needs.

With the principle of “Quality Parts,Customers Priority,Honest Operation,and Considerate Service”,our business mainly focus on the distribution of electronic components. Line cards we deal with include Microchip,ALPS,ROHM,Xilinx,Pulse,ON,Everlight and Freescale. Main products comprise IC,Modules,Potentiometer,IC Socket,Relay,Connector.Our parts cover such applications as commercial,industrial, and automotives areas.

We are looking forward to setting up business relationship with you and hope to provide you with the best service and solution. Let us make a better world for our industry!



Contact us

Tel: +86-755-8981 8866 Fax: +86-755-8427 6832

Email & Skype: info@chipsmall.com Web: www.chipsmall.com

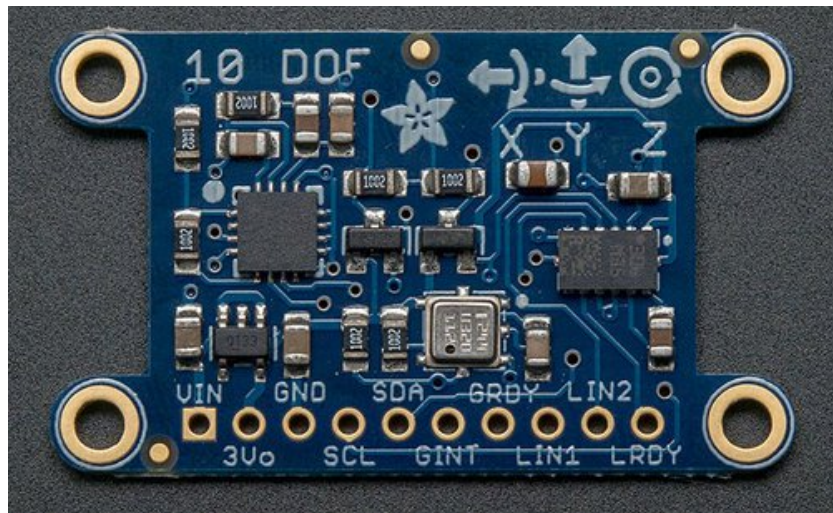
Address: A1208, Overseas Decoration Building, #122 Zhenhua RD., Futian, Shenzhen, China



□

Adafruit 10-DOF IMU Breakout

Created by Kevin Townsend

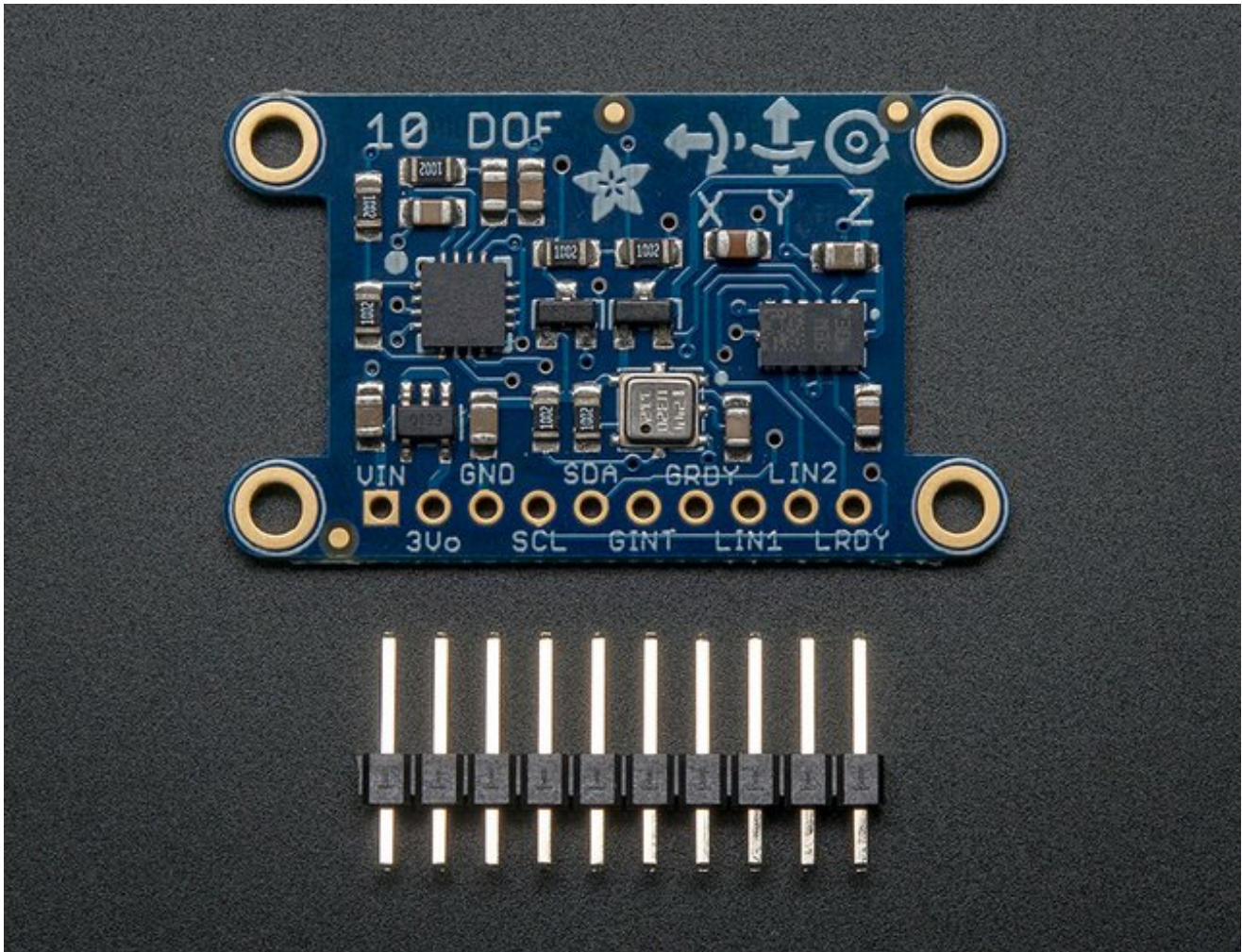


Last updated on 2016-09-14 07:32:14 PM UTC

Guide Contents

Guide Contents	2
Introduction	3
Related Links	4
Connecting It Up	5
Basic Setup (5V Logic, Arduino Uno, etc.)	5
Advanced Setup	6
3V3 Setup	7
Software	8
LSM303DLHC, L3GD20, BMP180 Drivers	8
Downloading Libraries from Github	8
Adafruit_10DOF Library Helper Functions	9
bool accelGetOrientation (sensors_event_t *event, sensors_vec_t *orientation)	9
bool magGetOrientation (sensors_axis_t axis, sensors_event_t *event, sensors_vec_t *mag_orientation)	10
bool magTiltCompensation (sensors_axis_t axis, sensors_event_t *mag_event, sensors_event_t *accel_event)	10
Example Sketch	11
Design Files	13
Datasheets	13
Dimensions (Inches)	13
Schematic	13
F.A.Q.	15

Introduction



Please note that there is a small cosmetic error on the first revision of these boards (shown above). The straight X arrow for the accelerometer should be pointing in the opposite direction, towards the right. This will be fixed in the net run of these boards. Adafruit's 10DOF (10 Degrees of Freedom) breakout board allows you to capture ten (err, eleven!) distinct types of motion or orientation related data.

After testing a lot of combinations of sensors, we settled on the following devices that we think offer the best results and the least amount of hassle:

- **LSM303DLHC** - a **3-axis accelerometer** (up to +/-16g) and a **3-axis magnetometer** (up to +/-8.1 gauss) on a single die
- **L3GD20** - a **3-axis gyroscope** (up to +/-2000 dps)
- **BMP180** - A **barometric pressure sensor** (300..1100 hPa) that can be used to

calculate altitude, with an additional on-board **temperature sensor**

Related Links

The Adafruit 10DOF board and library reuses the existing Adafruit drivers for the **LSM303DLHC** (accelerometer and magnetometer), the **L3GD20** (gyroscope) and the **BMP180** (pressure/altitude sensor).

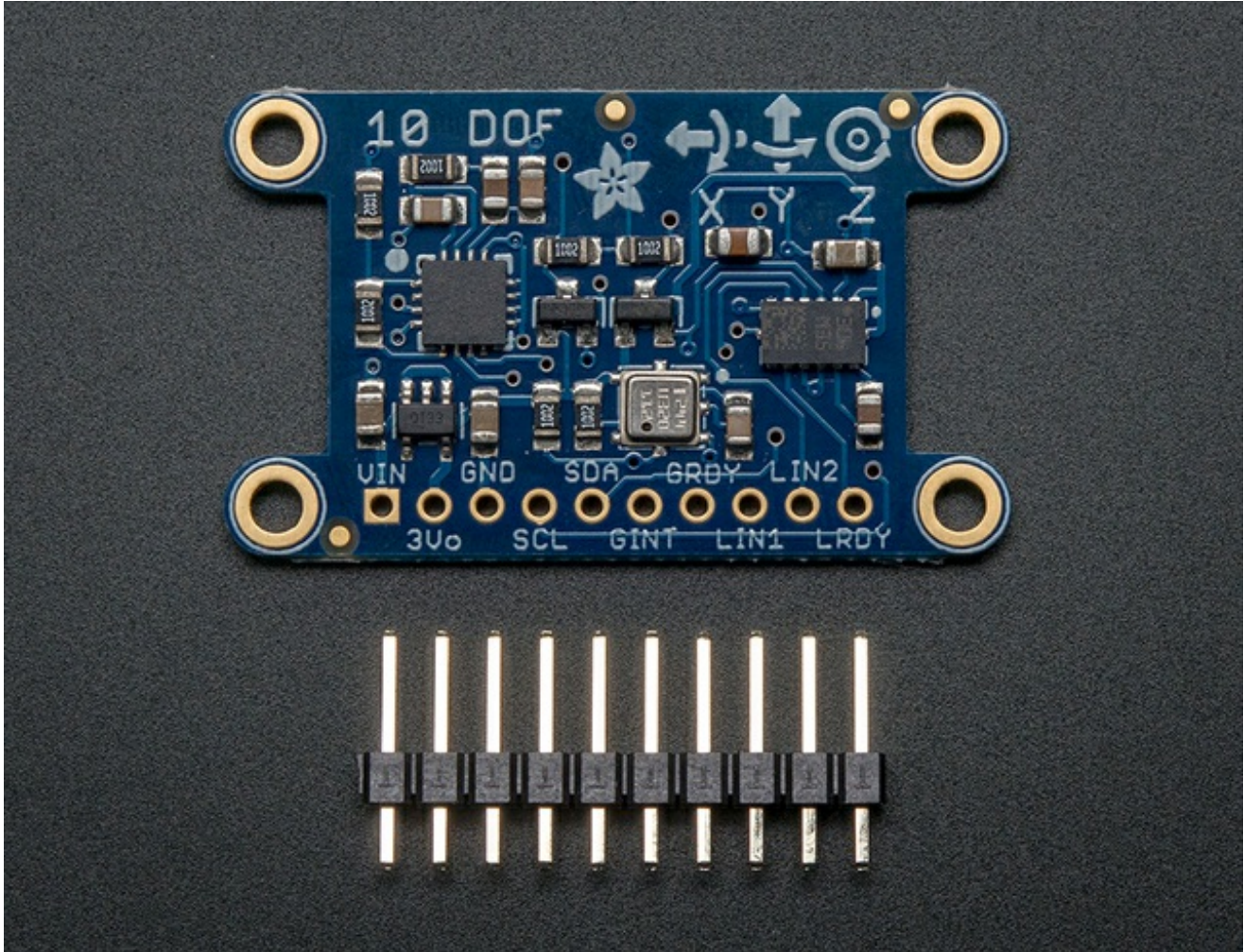
For information about these particular drivers, consult the following learning guides:

- [LSM303DLHC Learning Guide \(http://adafru.it/cXW\)](http://adafru.it/cXW)
- [L3GD20 Learning Guide \(http://adafru.it/cXX\)](http://adafru.it/cXX)
- [BMP180 Learning Guide \(http://adafru.it/cXY\)](http://adafru.it/cXY)

This breakout is basically just a smooshed together version of all three so anything you can do with those libraries/guides will follow here.

Connecting It Up

All of the sensors on the Adafruit 10DOF breakout communicate via a two-pin I2C bus, making it relatively easy to setup with a minimum number of cables:



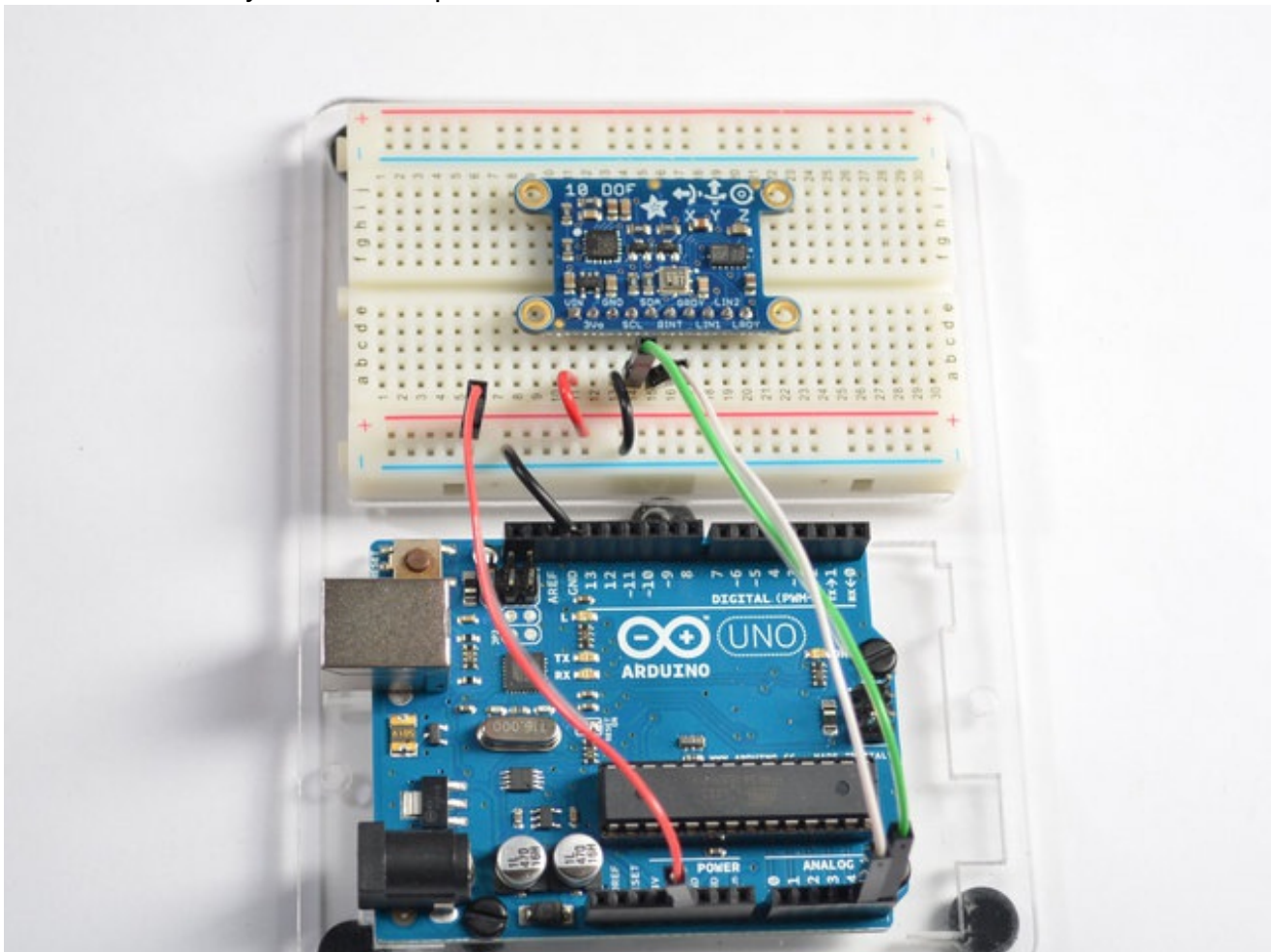
To interface with the sensor, you will need to solder in wire or header into the breakout row at the bottom. You cannot 'press fit' or 'twist' wires in, they will not make good contact! Soldering is required

Basic Setup (5V Logic, Arduino Uno, etc.)

We'll be using an Arduino UNO here, but the code will work on a Mega or Leonardo just fine. Most other Arduino compatibles should have no problems either but we only support official Arduinos for code.

- Connect the **SCL** pin on the breakout to the **SCL** pin on your Arduino. On an UNO & '328 based Arduino, this is also known as **A5**, on a Mega it is also known as **digital 21** and on a Leonardo/Micro, **digital 3**
- Connect the **SDA** pin on the breakout to the **SDA** pin on your Arduino. On an UNO & '328 based Arduino, this is also known as **A4**, on a Mega it is also known as **digital 20** and on a Leonardo/Micro, **digital 2**
- Connect the **VIN** pin on the breakout to **3.3V or 5V** on your Uno (5V is preferred but if you have a 3V logic Arduino 3V is best)
- Connect the **GND** pin on the breakout to the **GND** pin on your Uno

That's it! With those four wires, you should be able to talk to any of the I2C chips on the board and run any of the example sketches.



Advanced Setup

While most people probably won't need to use the pins below, we've also broken out a few extra pins for advanced users or for special use cases. If you need to use any of these pins, simply hook them up to a GPIO pin of your choice on the Uno:

- **GINT** - The interrupt pin on the L3GD20 gyroscope
- **GRDY** - The 'ready' pin on the L3GD20 gyroscope
- **LIN1** - Interrupt pin 1 on the LSM303DLHC
- **LIN2** - Interrupt pin 2 on the LSM303DLHC
- **LRDY** - The ready pin on the LSM303DLHC

These pins are all outputs from the 10-DOF breakout and are all 3.3V logic, you can use them with 5V or 3V as 3.3V registers 'high' on 5V systems.

3V3 Setup

If you are using an MCU or board with 3V3 logic (instead of the 5V logic used by the Arduino Uno), you can still power the 10-DOF with the VIN pin *or* you can use the 3Vo pin, which will bypass the on-board 3V3 regulator and level shifting:

- Connect **Vin or 3Vo** on the breakout to the **3.3V** supply on your target MCU
- Connect **GND** on the breakout to **GND** on the target MCU

Like other breakouts on Adafruit, the 10 DOF Breakout is fully level shifted, and you can safely use it on 3V3 or 5V systems.



Software

LSM303DLHC, L3GD20, BMP180 Drivers

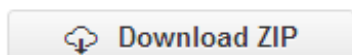
You will need to have all of the following libraries available in your /libraries folder for Arduino to make use of the Adafruit 10DOF breakout:

- [Adafruit Unified Sensor Library on Github \(http://adafru.it/aZm\)](http://adafru.it/aZm)
- [LSM303DLHC Library on Github \(http://adafru.it/aYU\)](http://adafru.it/aYU)
- [L3GD20 Library on Github \(http://adafru.it/cZ4\)](http://adafru.it/cZ4)
- [BMP180 Library on Github \(http://adafru.it/aZq\)](http://adafru.it/aZq)
- [Adafruit 10DOF Library on Github \(http://adafru.it/cXZ\)](http://adafru.it/cXZ)

For information on the Adafruit Sensor Library and the Unified Sensor Drivers used for all of these sensors, feel free to have a look at our related learning guide: [Using the Adafruit Unified Sensor Driver \(http://adafru.it/cZ5\)](http://adafru.it/cZ5)

Downloading Libraries from Github

If you aren't familiar with Github, the easiest way to install the libraries is to click on the individual links above and find the button that looks like this on the main repository page:



While on the github repository webpage, click the button resembling the image above to download a .zip file containing everything in the repository, and then **place the files in the Arduino Sketch Folder '/libraries' sub-folder**. You should end up with a structure like this:

- *arduin sketches/libraries/Adafruit_10DOF*
- *arduin sketches/libraries/Adafruit_BMP085*
- *arduin sketches/libraries/Adafruit_L3GD20_U*
- *arduin sketches/libraries/Adafruit_LSM303DLHC*
- *arduin sketches/libraries/Adafruit_Sensor*

[If you're new to installing libraries, check out our super-awesome detailed tutorial on how to install Arduino libraries \(http://adafru.it/aYM\)](http://adafru.it/aYM)

Please make sure you have the latest version of each repository before running the Adafruit_10DOF examples.

Adafruit_10DOF Library Helper Functions

The `Adafruit_10DOF.cpp` file (from [Adafruit_10DOF \(http://adafru.it/cXZ\)](http://adafru.it/cXZ)) includes the following helper functions that are useful when working with typically 10DOF projects

bool accelGetOrientation (sensors_event_t *event, sensors_vec_t *orientation)

This function reads the LSM303DLHC accelerometer data (supplied via the 'event' variable), and converts it into equivalent pitch (x) and roll (y) values, populating the supplied 'orientation' variables .pitch and .roll fields accordingly.

Arguments

- **event:** The `sensors_event_t` variable containing the data from the accelerometer
- **orientation:** The `sensors_vec_t` object that will have its .pitch and .roll fields populated

Returns

- **true** if the operation was successful,
- **false** if there was an error

Example

See the 'pitchrollheading' example in the Adafruit_10DOF library for an example of how to use this helper function

```
sensors_event_t accel_event;
sensors_vec_t orientation;

/* Calculate pitch and roll from the raw accelerometer data */
accel.getEvent(&accel_event);
if (dof.accelGetOrientation(&accel_event, &orientation))
{
  /* 'orientation' should have valid .roll and .pitch fields */
  Serial.print(F("Roll: "));
  Serial.print(orientation.roll);
  Serial.print(F(" "));
  Serial.print(F("Pitch: "));
  Serial.print(orientation.pitch);
  Serial.print(F(" "));
}
```

```
}
```

bool magGetOrientation (sensors_axis_t axis, sensors_event_t *event, sensors_vec_t *mag_orientation)

This function populates the .heading field in mag_orientation with the correct angular data (0-359°). Heading increases when rotating clockwise around the specified axis.

Arguments

- **axis:** The given axis (SENSOR_AXIS_X, SENSOR_AXIS_Y, or SENSOR_AXIS_Z)
- **event:** The raw magnetometer sensor data to use when calculating out heading
- **orientation:** The sensors_vec_t object where we will assign an 'orientation.heading' value

Returns

- **true** if the operation was successful,
- **false** if there was an error

Example

See the 'pitchrollheading' example in the Adafruit_10DOF library for an example of how to use this helper function

```
sensors_event_t mag_event;  
sensors_vec_t orientation;  
  
/* Calculate the heading using the magnetometer */  
mag.getEvent(&mag_event);  
if (dof.magGetOrientation(SENSOR_AXIS_Z, &mag_event, &orientation))  
{  
  /* 'orientation' should have valid .heading data now */  
  Serial.print(F("Heading: "));  
  Serial.print(orientation.heading);  
  Serial.print(F("; "));  
}
```

bool magTiltCompensation (sensors_axis_t axis, sensors_event_t *mag_event, sensors_event_t *accel_event)

This function uses the accelerometer data provided in accel_event to compensate the

magnetic sensor measurements in `mag_event` to compensate for situations where the sensor is tilted (the pitch and roll angles are not equal to 0°).

Arguments

- **axis:** The given axis (`SENSOR_AXIS_X`, `SENSOR_AXIS_Y`, or `SENSOR_AXIS_Z`) that is parallel to the gravity of the Earth
- **mag_event:** The raw magnetometer data to adjust for tilt
- **accel_event:** The accelerometer event data to use to determine the tilt when compensating the `mag_event` values

Returns

- **true** if the operation was successful,
- **false** if there was an error

Example

```
sensors_event_t accel_event;
sensors_event_t mag_event;

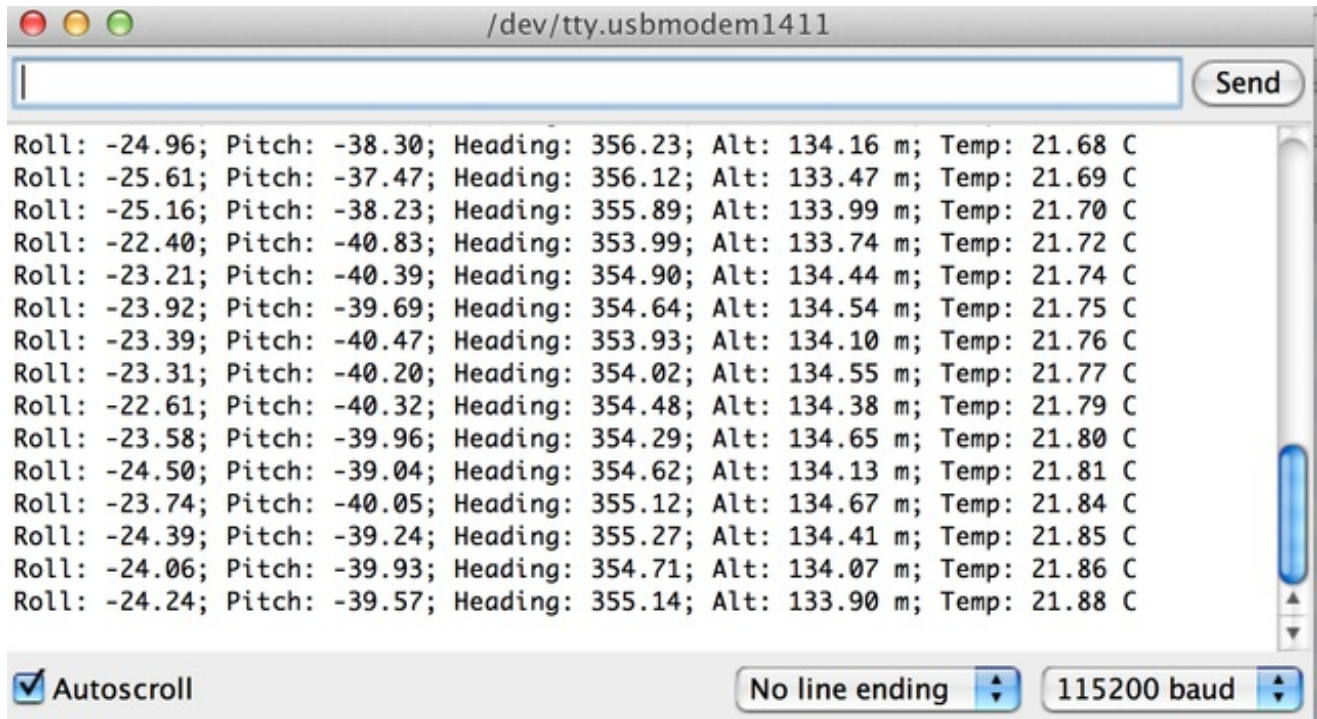
...

// Get a sensor event from the accelerometer and magnetometer
accel.getEvent(&accel_event);
mag.getEvent(&mag_event);

if (dof.magTiltCompensation(SENSOR_AXIS_Z, &mag_event, &accel_event))
{
    // Do something with the compensated data in mag_event!
}
else
{
    // Oops ... something went wrong (probably bad data)
}
```

Example Sketch

If you run the **pitchrollheading** sketch in the examples folder, you can see a practical example using these helper functions above, which should result in output similar to the image below:



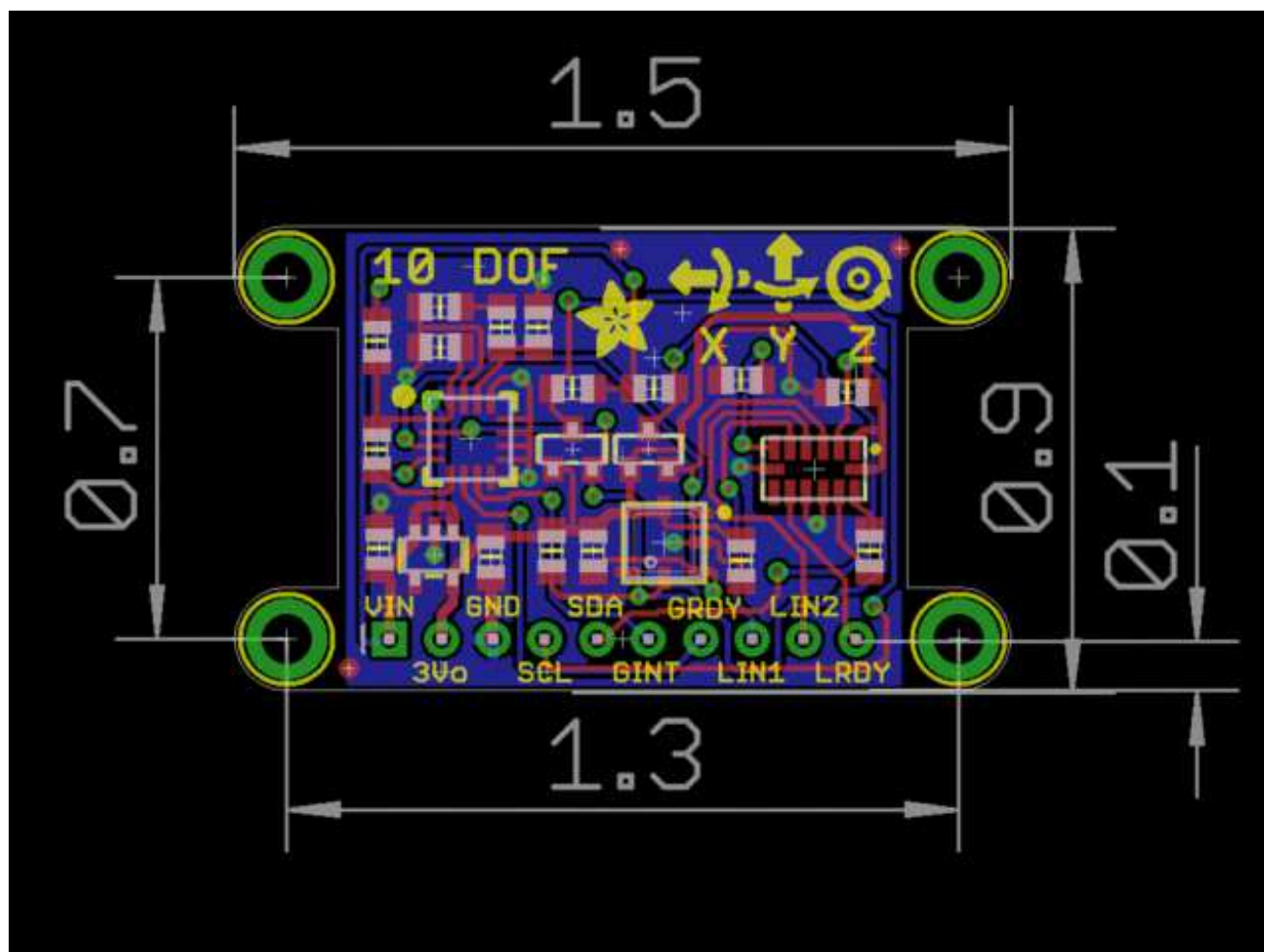


Design Files

Datasheets

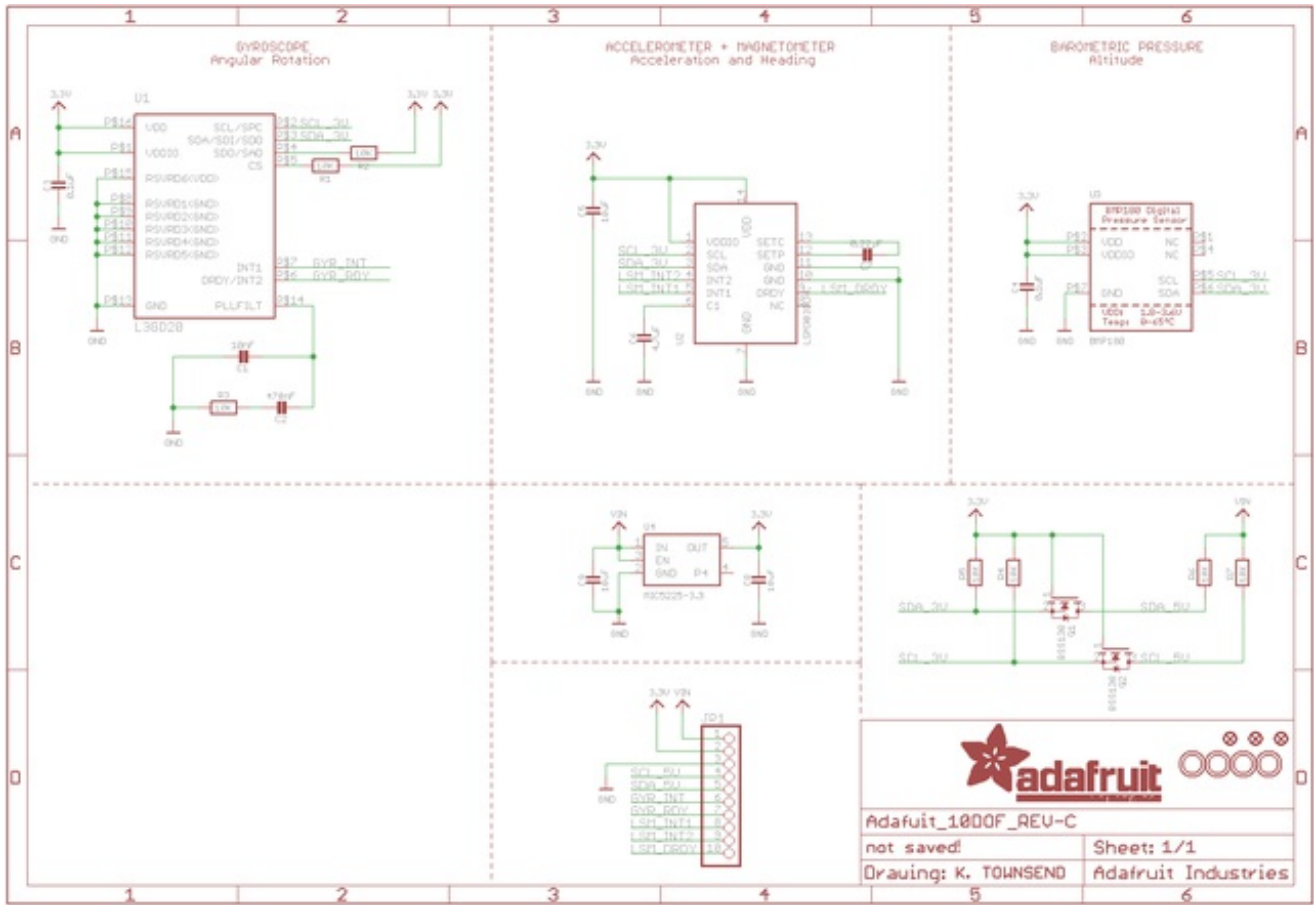
- [LSM303 Datasheet](http://adafru.it/d8s) (<http://adafru.it/d8s>)
- [L3GD20 Datasheet](http://adafru.it/d8t) (<http://adafru.it/d8t>)
- [BMP180 Datasheet](http://adafru.it/d8u) (<http://adafru.it/d8u>)
- [EagleCAD PCB files on GitHub](http://adafru.it/rpd) (<http://adafru.it/rpd>)
- [Fritzing object in Adafruit Fritzing library](http://adafru.it/c7M) (<http://adafru.it/c7M>)

Dimensions (Inches)



Schematic

Schematic





F.A.Q.