



Chipsmall Limited consists of a professional team with an average of over 10 year of expertise in the distribution of electronic components. Based in Hongkong, we have already established firm and mutual-benefit business relationships with customers from,Europe,America and south Asia,supplying obsolete and hard-to-find components to meet their specific needs.

With the principle of "Quality Parts,Customers Priority,Honest Operation,and Considerate Service",our business mainly focus on the distribution of electronic components. Line cards we deal with include Microchip,ALPS,ROHM,Xilinx,Pulse,ON,Everlight and Freescale. Main products comprise IC,Modules,Potentiometer,IC Socket,Relay,Connector.Our parts cover such applications as commercial,industrial, and automotives areas.

We are looking forward to setting up business relationship with you and hope to provide you with the best service and solution. Let us make a better world for our industry!



Contact us

Tel: +86-755-8981 8866 Fax: +86-755-8427 6832

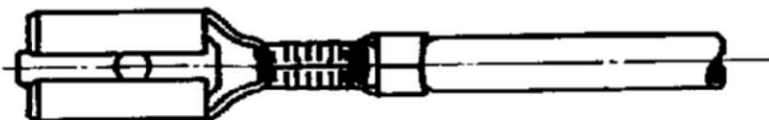
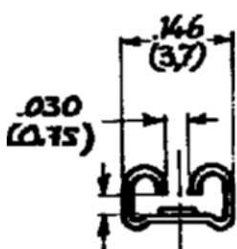
Email & Skype: info@chipsmall.com Web: www.chipsmall.com

Address: A1208, Overseas Decoration Building, #122 Zhenhua RD., Futian, Shenzhen, China

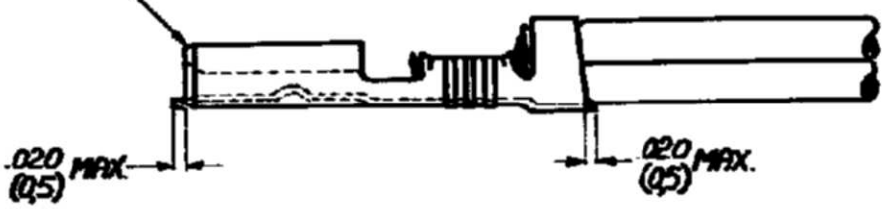


REVISIONS				
LTR	DESCRIPTION	DATE	DWN	APVD
A1	ECO-09-022178	24SEP09	KK	AEG

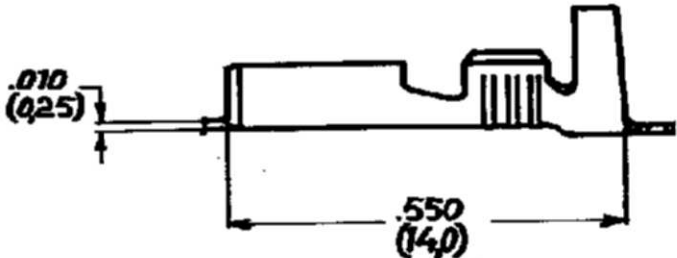
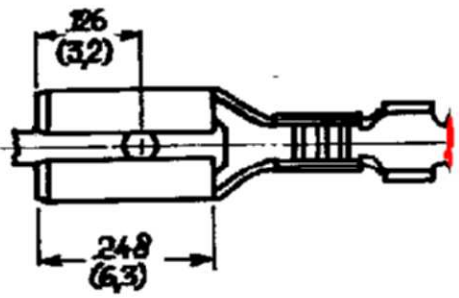
NUMBER C-160625



CHAMFER AROUND FRONT OF RECEPTACLE



FOR .020 (0.5) TAB-THICKNESS



1.160625_0	PHOS. BRONZE	▲
160625_9	PHOSPHOR BRONZE	PRE-TIN
160625-5	PHOS. BRONZE	TIN
160625-4	PHOS. BRONZE	---
160625-3	BRASS	SILVER
160625-2	BRASS	TIN
160625-1/2	BRASS	---

▲ BRIGHT PRE-TIN PLATED
 ▲ OBSOLETE PARTS: OBSOLETE CIS STREAMLINING PER D.RENAUD/D.SINISI

CUSTOMER COPY FOR REFERENCE ONLY

©1979 BY AMP-HOLLAND N.V. ALL RIGHTS RESERVED A-MP PRODUCTS COVERED BY PATENTS AND/OR PATENTS PENDING.



AMP-HOLLAND N.V.
 's-HERTOGENBOSCH
 HOLLAND

WIRE RANGE 05-10 MAX	INSUL. RANGE 080-120 DIA R.B.-4.01	FIRST USED
SCALE 4 ≈ 1	LOC H	SIZE A
NO C-160625	REV A1	

NAME 110 Ser. FASTON RECEPTACLE 1.P.

DIMENSIONS IN (MM) DO NOT SCALE PRINT

DR. DATE 1.79	DATE 2.284
CHK. DATE 20/1/89	DATE 2.284