



Chipsmall Limited consists of a professional team with an average of over 10 year of expertise in the distribution of electronic components. Based in Hongkong, we have already established firm and mutual-benefit business relationships with customers from,Europe,America and south Asia,supplying obsolete and hard-to-find components to meet their specific needs.

With the principle of "Quality Parts,Customers Priority,Honest Operation,and Considerate Service",our business mainly focus on the distribution of electronic components. Line cards we deal with include Microchip,ALPS,ROHM,Xilinx,Pulse,ON,Everlight and Freescale. Main products comprise IC,Modules,Potentiometer,IC Socket,Relay,Connector.Our parts cover such applications as commercial,industrial, and automotives areas.

We are looking forward to setting up business relationship with you and hope to provide you with the best service and solution. Let us make a better world for our industry!



## Contact us

Tel: +86-755-8981 8866 Fax: +86-755-8427 6832

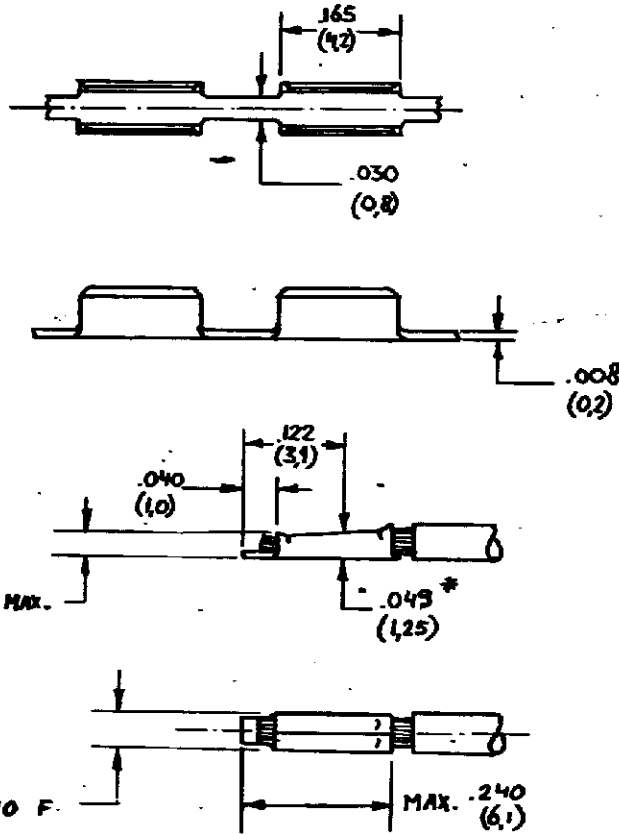
Email & Skype: info@chipsmall.com Web: www.chipsmall.com

Address: A1208, Overseas Decoration Building, #122 Zhenhua RD., Futian, Shenzhen, China



DRAWING MADE IN AMERICAN PROJECTION

NUMBER  
C-160725



CRIMP WIDTH .040 F.

NOTES: 1 FOR PRINTBOARD HOLE  $.049 \pm .004$  ( $1.25 \pm .01$ ) DIA.  
FOR AW622 WIRE ( $0.32 \text{ mm}^2$ )

2 REELED WITH PAPER.

3 OBSOLETE PARTS: OBSOLETE CIS  
STREAMLINING PER D.RENAUD/D.SINISI

CUSTOMER COPY FOR REFERENCE ONLY



AMP - HOLLAND N.V.  
's-Hertogenbosch

INCH DIMENSIONS IN ( ) IN. DO NOT SCALE PRINT

160725-2A	3	BRASS	UNPLATED
160725-1A		BRASS	Sn OVER Ni
ORDER NO.	MATERIAL	PLATING	
BY A.BUNEN 16.5.72	DATE	DE	DATE
DATE	APP	DATE	DATE
DATE	AEG	DATE	DATE

TYPE RANGE	WIRE RANGE	WIRE USED	SCALE	SIZE	NO	REV
16-22 AWG (0.2-0.25 mm <sup>2</sup> )			5:1	A	C-160725	K1
NAME: SOLDER SPLICE						

AMP 2504