



Chipsmall Limited consists of a professional team with an average of over 10 year of expertise in the distribution of electronic components. Based in Hongkong, we have already established firm and mutual-benefit business relationships with customers from,Europe,America and south Asia,supplying obsolete and hard-to-find components to meet their specific needs.

With the principle of “Quality Parts,Customers Priority,Honest Operation,and Considerate Service”,our business mainly focus on the distribution of electronic components. Line cards we deal with include Microchip,ALPS,ROHM,Xilinx,Pulse,ON,Everlight and Freescale. Main products comprise IC,Modules,Potentiometer,IC Socket,Relay,Connector.Our parts cover such applications as commercial,industrial, and automotives areas.

We are looking forward to setting up business relationship with you and hope to provide you with the best service and solution. Let us make a better world for our industry!



## Contact us

Tel: +86-755-8981 8866 Fax: +86-755-8427 6832

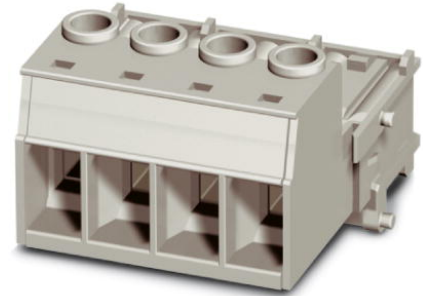
Email & Skype: info@chipsmall.com Web: www.chipsmall.com

Address: A1208, Overseas Decoration Building, #122 Zhenhua RD., Futian, Shenzhen, China



## VC-AMS 4


Order No.: 1607745



<http://eshop.phoenixcontact.de/phoenix/treeViewClick.do?UID=1607745>

Contact insert module, for panel mounting frames, with screw connection, 3-pos. + PE, 690 V / 70 A

### Commercial data

GTIN (EAN)	 4 017918 969196
sales group	D238
Pack	5 pcs.
Customs tariff	85366990
Catalog page information	Page 353 (PC-2009)

### Product notes

WEEE/RoHS-compliant since:  
12/15/2006



<http://www.download.phoenixcontact.com>  
Please note that the data given here has been taken from the online catalog. For comprehensive information and data, please refer to the user documentation. The General Terms and Conditions of Use apply to Internet downloads.

### Technical data

#### General data

Note	Plug connectors may only be connected/disconnected when under no load.
Connection method	Screw connection
	Screw connection
Tightening torque	1.2 Nm ... 1.8 Nm

Ambient temperature (operation)	-40 °C ... 100 °C
Pollution degree	3
Surge voltage category	III
Number of positions	4
Insertion/withdrawal cycles	≥ 500
Design	VC2
Conductor cross section AWG/kcmil min.	20
Conductor cross section AWG/kcmil max	6
Connection in acc. with standard	IEC / EN
Conductor cross-section	0.5 mm <sup>2</sup> ... 16 mm <sup>2</sup>
Connection cross-section AWG	20 ... 5
Stripping length of the individual wire	12 mm

**Material data**

Inflammability class acc. to UL 94	V0
Contact material	CuZn
Contact surface material	hard-silver plated
Contact carrier material	PA

**Electrical characteristics**

Rated voltage (III/3)	690 V
Rated surge voltage	6 kV
	6 kV
Rated current	70 A
	70 A

**Certificates / Approvals**

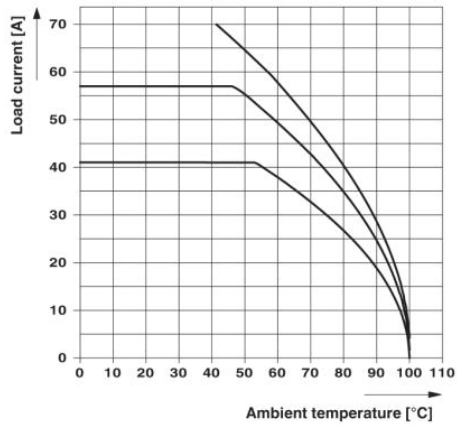
Certification CUL, UL

**Accessories**

Item	Designation	Description
<b>Plug/Adapter</b>		
1600027	CP-HCC 4	Coding profile, Color: red

## Diagrams/Drawings

### Diagram



### Dimensioned drawing

---

**Address**

PHOENIX CONTACT Deutschland GmbH  
Flachmarktstr. 8  
32825 Blomberg, Germany  
Phone +49 5235 3 12000  
Fax +49 5235 3 41200  
<http://www.phoenixcontact.de>



© 2011 Phoenix Contact  
Technical modifications reserved;