



Chipsmall Limited consists of a professional team with an average of over 10 year of expertise in the distribution of electronic components. Based in Hongkong, we have already established firm and mutual-benefit business relationships with customers from,Europe,America and south Asia,supplying obsolete and hard-to-find components to meet their specific needs.

With the principle of “Quality Parts,Customers Priority,Honest Operation,and Considerate Service”,our business mainly focus on the distribution of electronic components. Line cards we deal with include Microchip,ALPS,ROHM,Xilinx,Pulse,ON,Everlight and Freescale. Main products comprise IC,Modules,Potentiometer,IC Socket,Relay,Connector.Our parts cover such applications as commercial,industrial, and automotives areas.

We are looking forward to setting up business relationship with you and hope to provide you with the best service and solution. Let us make a better world for our industry!



## Contact us

Tel: +86-755-8981 8866 Fax: +86-755-8427 6832

Email & Skype: info@chipsmall.com Web: www.chipsmall.com

Address: A1208, Overseas Decoration Building, #122 Zhenhua RD., Futian, Shenzhen, China

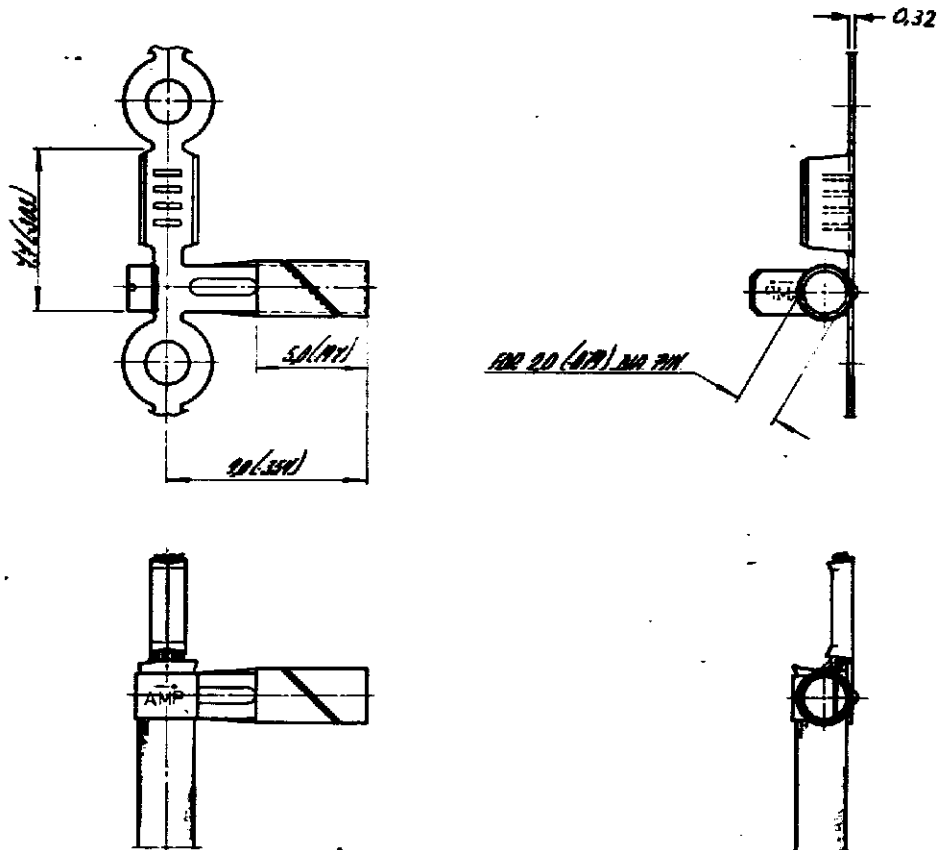


DRAWING MADE IN AMERICAN PROJECTION

LTR	REVISION RECORD	ECN	DR	CHK	DATE
D1	ECO-09-022178		KK	AEG	SEP09

NUMBER

C-160783



3 OBSOLETE PARTS: OBSOLETE CIS  
STREAMLINING PER D.RENAUD/D.SINISI

1 FOR USE ON MINIATURE APPLICATORS;  
LEFT - RIGHT FEED

2 FOR USE ON MINIATURE APPLICATORS;  
AMP-O-MATOR APPLICATION ; LEFT-RIGHT FEED

DIMENSIONS IN MM

EQU NO.1 SCALE PRINT

SOMMETS 2000 / 1000000

160783-8	3	NICKEL-SILVER	NONE	
160783-6		PH BRONZE	PRE-FINISHED	
160783-5		STEEL	PRE-NICKEL	
160783-4		PH BRONZE	NONE	
160783-3	3	PH BRONZE	PRE-FINISHED	

## CUSTOMER COPY FOR REFERENCE ONLY

© 1978 BY AMP-HOLLAND N.V. ALL RIGHTS RESERVED A-MP PRODUCTS COVERED BY PATENTS AND OR PATENTS PENDING.

AMP-HOLLAND N.V.  
's-Hertogenbosch

WIRE RANGE: 0.2 - 0.25 mm 24  
INSUL RANGE: 0.25 - 0.3 mm 24  
FIRST USED

ORDER NO	MATERIAL	PLATING
DR	DATE	DE
DATE	DATE	DATE
DATE	DATE	DATE

SCALE	SIZE	NO	REV
1/1	A	C-160783	D1
NAME			
RECEPTABLE FOR 2.0 (078) 300 PIN			

AMP 1252-4