



Chipsmall Limited consists of a professional team with an average of over 10 year of expertise in the distribution of electronic components. Based in Hongkong, we have already established firm and mutual-benefit business relationships with customers from,Europe,America and south Asia,supplying obsolete and hard-to-find components to meet their specific needs.

With the principle of “Quality Parts,Customers Priority,Honest Operation,and Considerate Service”,our business mainly focus on the distribution of electronic components. Line cards we deal with include Microchip,ALPS,ROHM,Xilinx,Pulse,ON,Everlight and Freescale. Main products comprise IC,Modules,Potentiometer,IC Socket,Relay,Connector.Our parts cover such applications as commercial,industrial, and automotives areas.

We are looking forward to setting up business relationship with you and hope to provide you with the best service and solution. Let us make a better world for our industry!



Contact us

Tel: +86-755-8981 8866 Fax: +86-755-8427 6832

Email & Skype: info@chipsmall.com Web: www.chipsmall.com

Address: A1208, Overseas Decoration Building, #122 Zhenhua RD., Futian, Shenzhen, China



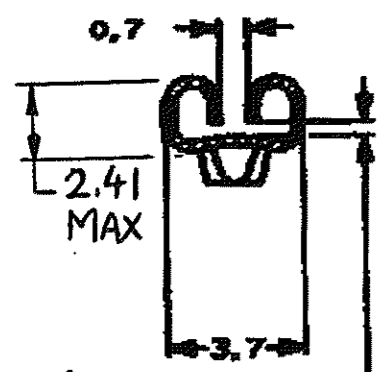
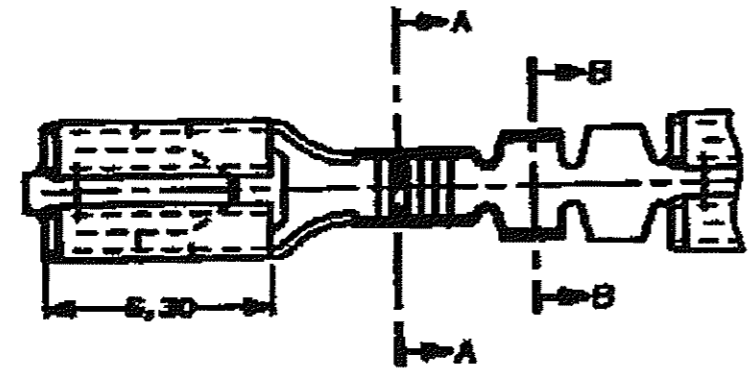
DO NOT SCALE
DIMENSIONS IN mm

METRIC

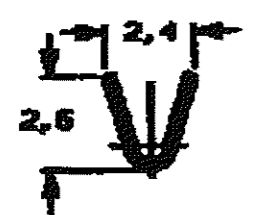
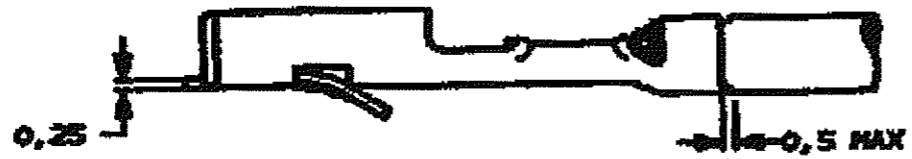
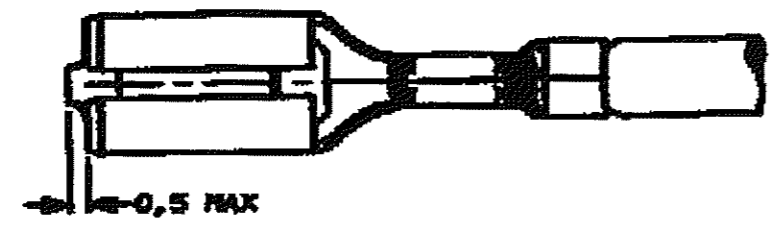
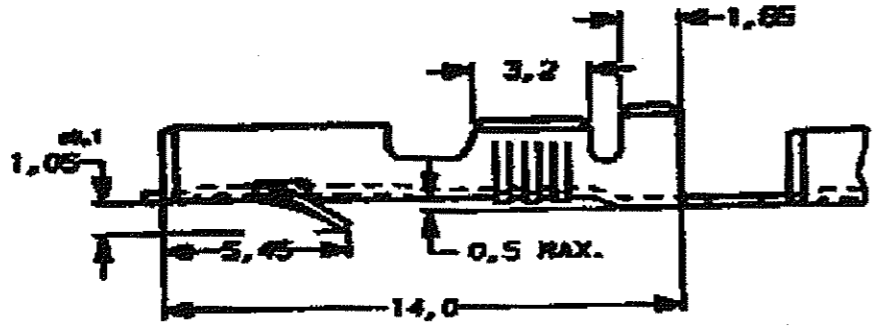


NOTES:

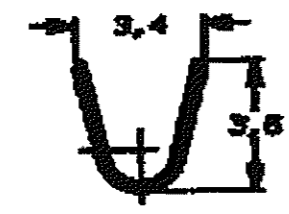
- △ FOR USE ON MINIATURE APPLICATORS (LEFT-RIGHT FEED) AND STANDARD APPLICATORS (RIGHT-LEFT FEED).
- △ BRASS ACC. ASTM B36 ALLOY 250.
- △ PH. BRONZE ACC. ASTM B103.
- △ GAGE 0,74 MUST NOT ENTER, GAGE 0,58 MUST ENTER.
- 5 REELED WITH PAPER COVER.
- 6 UNLESS OTHERWISE SPECIFIED ALL TOLERANCES ± 0,4mm.



△ FOR 0,8 mm TAB THICKNESS



SECTION A-A



SECTION B-B

DOC. CENTRE
08 JULI 1993

NOTES	FINISH	MATERIAL	PARTNUMBER
△ 1	PH. BRONZE	PH. BRONZE 6XSn	160864-6
△ 1	PH. BRONZE	PH. BRONZE 6XSn	160864-5
△ 1	PRE-TINPLATED	PH. BRONZE 4XSn	160864-4
△ 1	UNPLATED	PH. BRONZE 4XSn	160864-3
△ 1	PRE-TINPLATED	BRASS	160864-2
△ 1	UNPLATED	BRASS	160864-1

CUSTOMER DRAWING				FOR REFERENCE ONLY WILL NOT BE UPDATED	
THIS DRAWING IS UNPUBLISHED RELEASED FOR PUBLICATION					
STE TE Connectivity					
.110 SERIES FAST-IN-ON RECEPTACLE					
D1	REVISED PER ECO-11-005150	RK	HMR	28MAR11	
L.T.R. REVISOR RECORD		DR.	CHK.	DATE	
DR.	P. REVISOR	CHK.	ADDRESS	APP.	DATE
DATE: 12-09-09	DATE:			DATE: 05-27-93	
C-160864				REV. L.T.R.	SHEET
				D1	1 OF 1

WIRE RANGE :
0,5-1,0 mm²
INSULATION RANGE :
1,4-2,3 DIA.

