



Chipsmall Limited consists of a professional team with an average of over 10 year of expertise in the distribution of electronic components. Based in Hongkong, we have already established firm and mutual-benefit business relationships with customers from,Europe,America and south Asia,supplying obsolete and hard-to-find components to meet their specific needs.

With the principle of “Quality Parts,Customers Priority,Honest Operation,and Considerate Service”,our business mainly focus on the distribution of electronic components. Line cards we deal with include Microchip,ALPS,ROHM,Xilinx,Pulse,ON,Everlight and Freescale. Main products comprise IC,Modules,Potentiometer,IC Socket,Relay,Connector.Our parts cover such applications as commercial,industrial, and automotives areas.

We are looking forward to setting up business relationship with you and hope to provide you with the best service and solution. Let us make a better world for our industry!



## Contact us

Tel: +86-755-8981 8866 Fax: +86-755-8427 6832

Email & Skype: info@chipsmall.com Web: www.chipsmall.com

Address: A1208, Overseas Decoration Building, #122 Zhenhua RD., Futian, Shenzhen, China



4

3

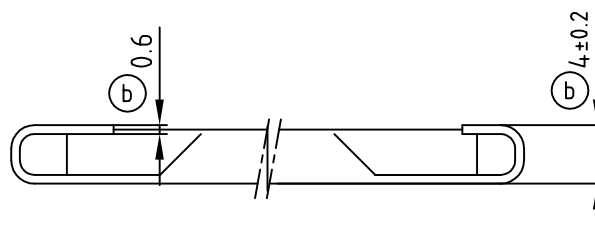
2

1

used for: D-SUB

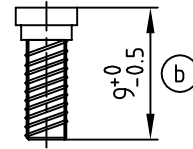
F

F



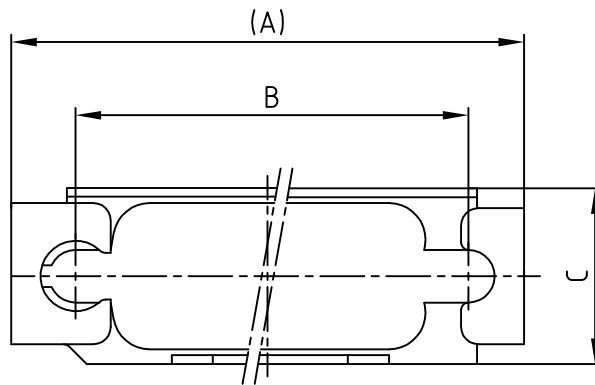
E

E



D

D



C

C

(b) A set consists of:  
1 frame  
2 screws

(b) Material and plating:  
frame - stainless steel  
screws; 5-7µ Zn thickfilm passivated

B

B



(b)

(b)

(b)

No. of Pos.	A	B	C	Part No.
9	35.0	27.4	12.0	160X10159X
15	43.3	35.7	11.5	160X10169X
25	57.0	49.4	12.0	160X10179X
37	74.4	65.9	12.0	160X10189X
50	72.0	63.5	15.0	160X10199X

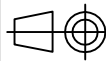
A

A

THIS DRAWING MAY NOT BE COPIED OR REPRODUCED IN ANY WAY, AND MAY NOT BE PASSED ON TO A THIRD PARTY WITHOUT WRITTEN PERMISSION.  
OWNERSHIP AND COPYRIGHT OF CONEC GmbH  
DO NOT ALTER CAD DRAWING BY HAND

8 x b	Ä 3055	14.07.2008	Lehmen
a	Origin		
rev.	description	date	name

tolerance  
DIN ISO 2768-m



scale: 2:1  
material: SEE NOTES

2002	date	name
drawn	12.03.	Schmidt
appd.	12.03.	Mickenbecker
norm		
d-old	KAT1X5A	

title:  
Slide-lock Typ 3  
with locking bolt  
9 - 50 pos.

dwg no: AutoCAD 2000 DIN-A  
16K1A602 4  
sh: 1/1

**CONEC**®

part no: SEE TABLE

4

3

2

1