



Chipsmall Limited consists of a professional team with an average of over 10 year of expertise in the distribution of electronic components. Based in Hongkong, we have already established firm and mutual-benefit business relationships with customers from,Europe,America and south Asia,supplying obsolete and hard-to-find components to meet their specific needs.

With the principle of “Quality Parts,Customers Priority,Honest Operation,and Considerate Service”,our business mainly focus on the distribution of electronic components. Line cards we deal with include Microchip,ALPS,ROHM,Xilinx,Pulse,ON,Everlight and Freescale. Main products comprise IC,Modules,Potentiometer,IC Socket,Relay,Connector.Our parts cover such applications as commercial,industrial, and automotives areas.

We are looking forward to setting up business relationship with you and hope to provide you with the best service and solution. Let us make a better world for our industry!



Contact us

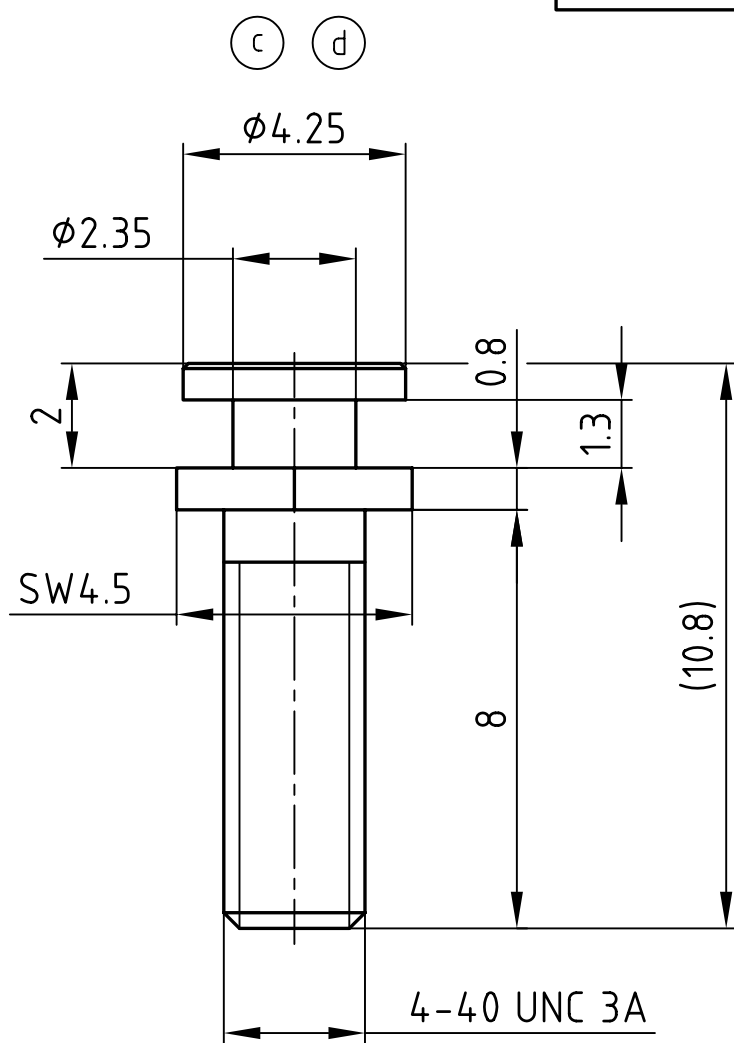
Tel: +86-755-8981 8866 Fax: +86-755-8427 6832

Email & Skype: info@chipsmall.com Web: www.chipsmall.com

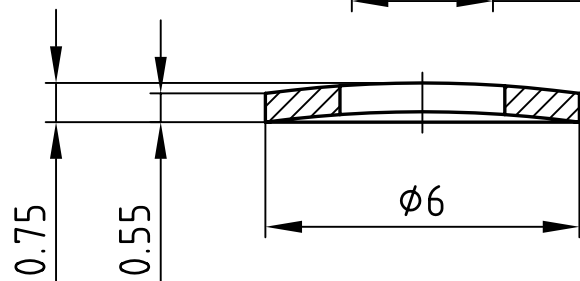
Address: A1208, Overseas Decoration Building, #122 Zhenhua RD., Futian, Shenzhen, China



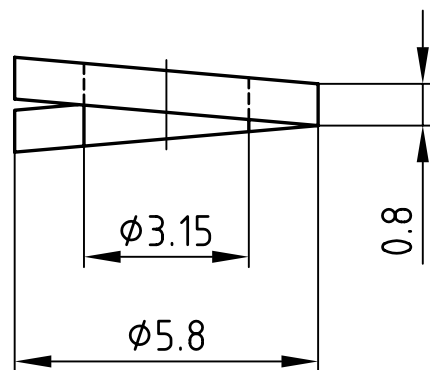
used for: D-SUB



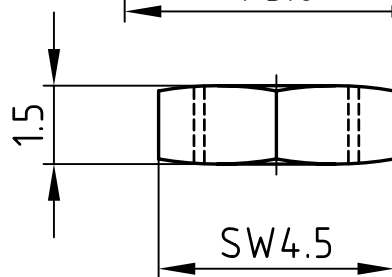
(b) LOCKING SCREW



WASHER



SPRING WASHER



NUT

- 1 SET CONSISTS OF:
 2 x LOCKING SCREW
 2 x NUT
 4 x WASHER
 2 x SPRING WASHER

APPROVAL # FREIGABE # DEBLOCAGE # AUTORIZACION # APPROVAL	
CUSTOMER APPROVAL DATE:	
NAME:	TITLE:
COMPANY NAME:	
APPROVAL # FREIGABE # DEBLOCAGE # AUTORIZACION # APPROVAL	



NOTES:

1. LOCKING SCREW: 4-7µm Sn over 2-3µm Cu
2. NUT: 4-7µm Sn over 2-3µm Cu
3. WASHER: 4-7µm Sn over 2-3µm Cu
4. SPRING WASHER: 4-7µm Sn over 2-3µm Cu

THIS DRAWING MAY NOT BE COPIED OR REPRODUCED IN ANY WAY, AND MAY NOT BE PASSED ON TO A THIRD PARTY WITHOUT WRITTEN PERMISSION.
 OWNERSHIP AND COPYRIGHT OF CONEC GmbH
 DO NOT ALTER CAD DRAWING BY HAND

tolerance			DIN ISO 2768-m			dim. in mm		
1995	date	name	1995	date	name	1995	date	name
drawn	18.07.	Mickenbecker	drawn	18.07.	Mickenbecker	drawn	18.07.	Mickenbecker
appd.	18.07.	Barcinski	appd.	18.07.	Barcinski	appd.	18.07.	Barcinski
1 x d	Ä 3365	02.06.2009	Lehmen.	norm		1 x d	Ä 3365	02.06.2009
1 x c	Ä 2689	20.03.2007	E. Mick.	d-old		1 x c	Ä 2689	20.03.2007
1 x b	Ä 2535	18.07.2006	Lehmen.			1 x b	Ä 2535	18.07.2006
a	Origin					a	Origin	
rev.	description	date	name					

scale:	5:1		
material:	9SMnPb28K		
title:	LOCKING SCREW with accessory D-SUB 9-50pos.		
dwg no:	AutoCAD 2006	DIN-A	
	16V1M7A	4	
part no:	160X10209X		
	sh: 1/1		