



Chipsmall Limited consists of a professional team with an average of over 10 year of expertise in the distribution of electronic components. Based in Hongkong, we have already established firm and mutual-benefit business relationships with customers from,Europe,America and south Asia,supplying obsolete and hard-to-find components to meet their specific needs.

With the principle of “Quality Parts,Customers Priority,Honest Operation,and Considerate Service”,our business mainly focus on the distribution of electronic components. Line cards we deal with include Microchip,ALPS,ROHM,Xilinx,Pulse,ON,Everlight and Freescale. Main products comprise IC,Modules,Potentiometer,IC Socket,Relay,Connector.Our parts cover such applications as commercial,industrial, and automotives areas.

We are looking forward to setting up business relationship with you and hope to provide you with the best service and solution. Let us make a better world for our industry!



## Contact us

Tel: +86-755-8981 8866 Fax: +86-755-8427 6832

Email & Skype: info@chipsmall.com Web: www.chipsmall.com

Address: A1208, Overseas Decoration Building, #122 Zhenhua RD., Futian, Shenzhen, China



4

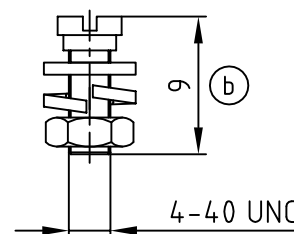
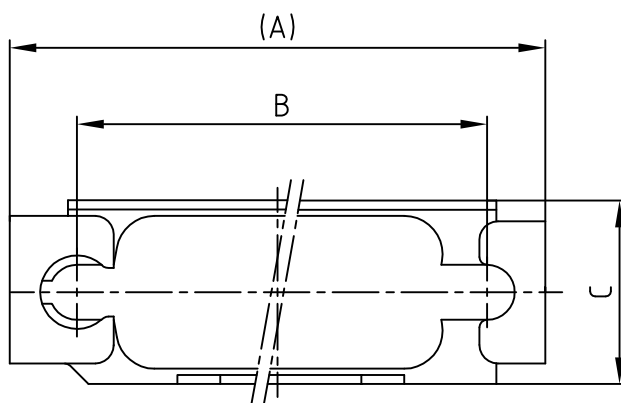
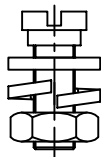
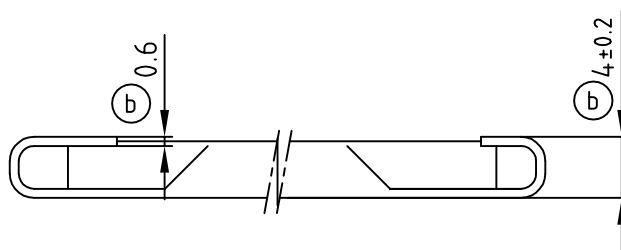
3

2

1

used for:

D-SUB



(b) (b) (b)

No. of Pos.	A	B	C	Part No.
9	35.0	27.4	12.0	160X10689X
15	43.3	35.7	11.5	160X10699X
25	57.0	49.4	12.0	160X10709X
37	74.4	65.9	12.0	160X10719X
50	72.0	63.5	15.0	160X10729X

A set consists of:

- 1 frame
- 2 screws UNC 4-40
- 2 washers
- 2 spring ring (b)
- 2 nuts UNC 4-40

Material and plating:

- frame - stainless steel
- screws - steel; 5-7 $\mu$  Zn thickfilm passivated
- washers - steel; 5-7 $\mu$  Zn thickfilm passivated
- (b) spring ring - steel; 5-7 $\mu$  Zn thickfilm passivated
- nuts - steel; 5-7 $\mu$  Zn thickfilm passivated

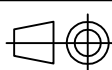
Directive 2002/95/EC  
"RoHS"  
Compliant

THIS DRAWING MAY NOT BE COPIED OR  
REPRODUCED IN ANY WAY, AND MAY NOT  
BE PASSED ON TO A THIRD PARTY WITHOUT  
WRITTEN PERMISSION.

OWNERSHIP AND COPYRIGHT OF CONEC GmbH  
DO NOT ALTER CAD DRAWING BY HAND

9 x b	Ä 3055	16.07.2008	Sonne
a	Origin		
rev.	description	date	name

tolerance (b)  
DIN ISO 2768-m



scale: 2:1  
material: SEE NOTES

1995	date	name
drawn	18.07.	Barcinski
appd.	18.07.	Mickenbecker
norm		
d-old		

title:  
Slide lock Typ 4  
with locking bolt  
9 - 50 pos.

dwg no: AutoCAD/REL.10  
16V11M6A  
DIN-A  
4  
sh: 1/1

**CONEC**<sup>®</sup>

part no: SEE TABLE

4

3

2

1