



Chipsmall Limited consists of a professional team with an average of over 10 year of expertise in the distribution of electronic components. Based in Hongkong, we have already established firm and mutual-benefit business relationships with customers from,Europe,America and south Asia,supplying obsolete and hard-to-find components to meet their specific needs.

With the principle of “Quality Parts,Customers Priority,Honest Operation,and Considerate Service”,our business mainly focus on the distribution of electronic components. Line cards we deal with include Microchip,ALPS,ROHM,Xilinx,Pulse,ON,Everlight and Freescale. Main products comprise IC,Modules,Potentiometer,IC Socket,Relay,Connector.Our parts cover such applications as commercial,industrial, and automotives areas.

We are looking forward to setting up business relationship with you and hope to provide you with the best service and solution. Let us make a better world for our industry!



## Contact us

Tel: +86-755-8981 8866 Fax: +86-755-8427 6832

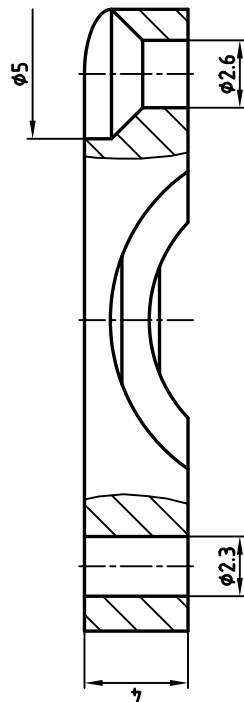
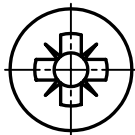
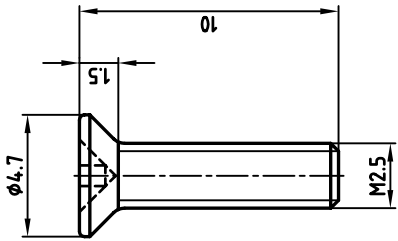
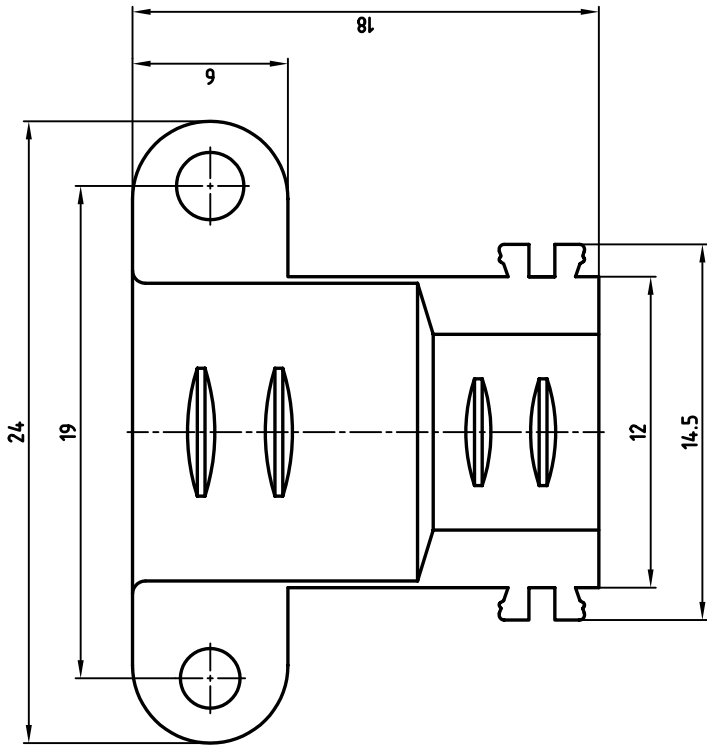
Email & Skype: info@chipsmall.com Web: www.chipsmall.com

Address: A1208, Overseas Decoration Building, #122 Zhenhua RD., Futian, Shenzhen, China



F 1 2 3 4 5 6 7 8

used for: D-SUB HOOD



Directive 2002/95/EC  
RoHS  
Compliant

- 1 SET CONSISTS OF:
- 2 CABLE CLAMPS
- 2 SCREWS

tolerance		scale: 5:1		material: CABLE CLAMP: DIE-CAST ZINC	
2001	date	name	title:		
drawn	25.04.	Parel	CABLE CLAMP SET		
appd.	25.04.	E. Mickenbecker	FOR HOOD 9-37pos.		
norm			dwg no: AutoCAD 2000 DIN-A		
e-old			16K1A183A 3		
			sh: 1/1		
rev. description		date		name	
THIS DRAWING MAY NOT BE COPIED OR REPRODUCED IN ANY WAY, AND MAY NOT BE PASSED ON TO A THIRD PARTY WITHOUT WRITTEN PERMISSION. OWNERSHIP AND COPYRIGHT OF CONEC GMBH DO NOT ALTER CAD DRAWING BY HAND					



part no: 160X11189X

F 1 2 3 4 5 6 7 8