



Chipsmall Limited consists of a professional team with an average of over 10 year of expertise in the distribution of electronic components. Based in Hongkong, we have already established firm and mutual-benefit business relationships with customers from,Europe,America and south Asia,supplying obsolete and hard-to-find components to meet their specific needs.

With the principle of “Quality Parts,Customers Priority,Honest Operation,and Considerate Service”,our business mainly focus on the distribution of electronic components. Line cards we deal with include Microchip,ALPS,ROHM,Xilinx,Pulse,ON,Everlight and Freescale. Main products comprise IC,Modules,Potentiometer,IC Socket,Relay,Connector.Our parts cover such applications as commercial,industrial, and automotives areas.

We are looking forward to setting up business relationship with you and hope to provide you with the best service and solution. Let us make a better world for our industry!



Contact us

Tel: +86-755-8981 8866 Fax: +86-755-8427 6832

Email & Skype: info@chipsmall.com Web: www.chipsmall.com

Address: A1208, Overseas Decoration Building, #122 Zhenhua RD., Futian, Shenzhen, China



Board Layout 3:1

1) recommended drill hole $\varnothing 0,64 \pm 0,01 \text{ mm}$ (acc. to IEC 60352-5)
through hole dia. (after plating): $\varnothing 0,55 \pm 0,05$

2) fixing-hole optional
non-metallized drillings

3) use self-tapping screws for plastics
2,2x length,
e.g. HARTING Part.-no.: 09 06 001 9974
(length= pcb thickness + 6,5mm to 10mm)

housing contour

centerline of card slot

row for ground

Pos.01

74,8 $\pm 0,05$

69,3 $\pm 0,05$

3) $\varnothing 2 \times 11$

A-A

7,45 $\pm 0,05$

1,9 $\pm 0,08$

12,85 $\pm 0,05$

5,8 $\pm 0,1$

2,1 $\pm 0,2$

4 x 1,5 (=6)

1,5

26 x 2,25 (=58,5)

1,5

3

Pos. 86

Pos. 85

0,75

84 x 0,75 (=63)

Pos. 170

Pos. 1

missing dimensions and information acc. to PICMG MicroTCA.0
(Micro Telecommunications Computing Architecture Base Specification)

con:card+

All Dimensions in mm Original Size DIN A 3		Techn. Character.			Nicht tolerierte Maß/Free size tolerances	
		Dat.	Name	Maßstab/Scale		
		Detail.	25.09.09 hsv	2:1 3:1	AdvancedMC connector for MicroTCA 170 pole, press-fit	
		Insp.	25.09.09 Lue.			
		Stand.				
35928		HARTING Electronics GmbH & Co. KG			TB 16 11 170 5202 000	Blatt/ page
Mod.	Dat.	Name	D-32339 ESPELKAMP	Sub.		

- Board Layout 3:1**

1) recommended drill hole $\varnothing 0,64 \pm 0,01 \text{ mm}$ (acc. to IEC 60352-5)
through hole dia. (after plating): $\varnothing 0,55 \pm 0,05$

2) fixing-hole optional
non-metallized drillings

3) use self-tapping screws for plastics
2,2x length,
e.g. HARTING Part.-no.: 09 06 001 9974
(length= pcb thickness + 6,5mm to 10mm)

housing contour

centerline of card slot

row for ground


Pos. 01

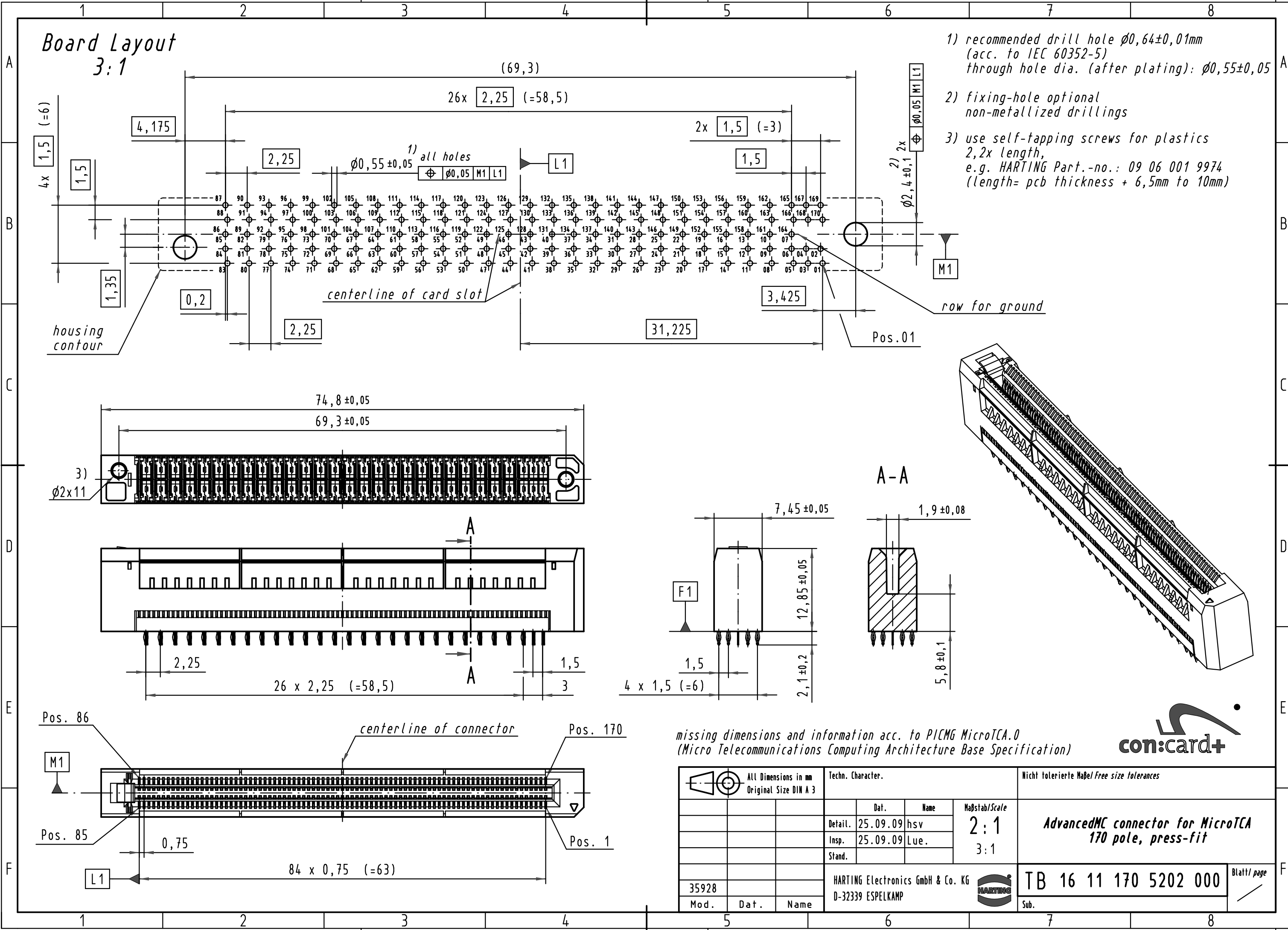
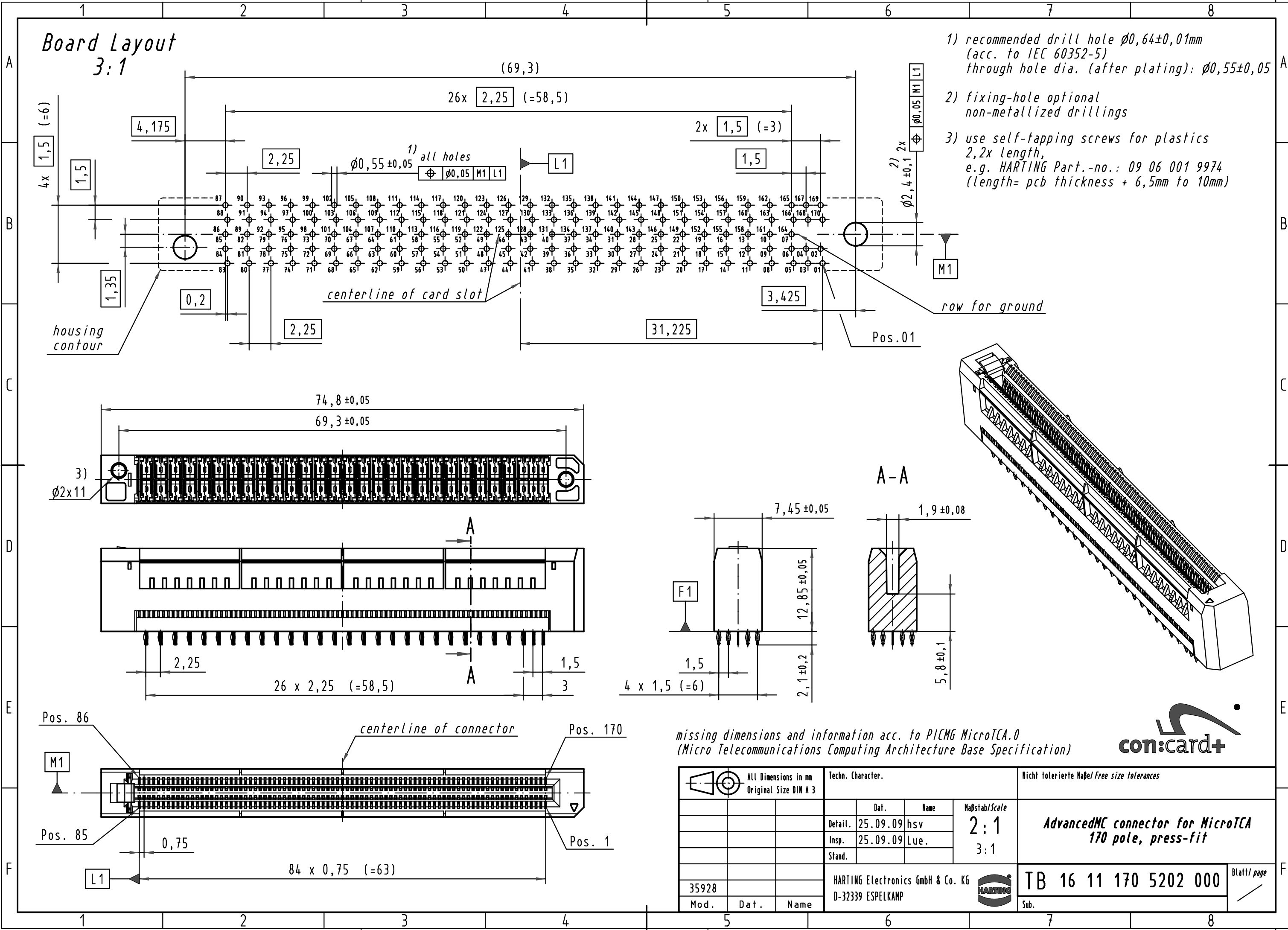
3) $\varnothing 2 \times 11$

A-A

missing dimensions and information acc. to PICMG MicroTCA.0
(Micro Telecommunications Computing Architecture Base Specification)

con:card+

All Dimensions in mm Original Size DIN A 3			Techn. Character.			Nicht tolerierte Maß/Free size tolerances	
				Dat.	Name	Maßstab/Scale	
				Detail.	25.09.09 hsv	2:1 3:1	AdvancedMC connector for MicroTCA 170 pole, press-fit
				Insp.	25.09.09 Lue.		
				Stand.			
35928			HARTING Electronics GmbH & Co. KG				TB 16 11 170 5202 000
Mod.	Dat.	Name	D-32339 ESPELKAMP				



Board Layout 3:1

1) recommended drill hole $\varnothing 0,64 \pm 0,01 \text{ mm}$ (acc. to IEC 60352-5)
through hole dia. (after plating): $\varnothing 0,55 \pm 0,05$

2) fixing-hole optional
non-metallized drillings

3) use self-tapping screws for plastics
2,2x length,
e.g. HARTING Part.-no.: 09 06 001 9974
(length= pcb thickness + 6,5mm to 10mm)

housing contour

centerline of card slot

row for ground

Pos.01

74,8 $\pm 0,05$

69,3 $\pm 0,05$

3) $\varnothing 2 \times 11$

A-A

7,45 $\pm 0,05$

1,9 $\pm 0,08$

12,85 $\pm 0,05$

5,8 $\pm 0,1$

2,1 $\pm 0,2$

4 x 1,5 (=6)

1,5

26 x 2,25 (=58,5)

1,5

3

centerline of connector

Pos. 86

M1

Pos. 85

0,75


84 x 0,75 (=63)

L1

Pos. 170

Pos. 1

missing dimensions and information acc. to PICMG MicroTCA.0
(Micro Telecommunications Computing Architecture Base Specification)

All Dimensions in mm Original Size DIN A 3			Techn. Character.			Nicht tolerierte Maß/Free size tolerances	
				Dat.	Name	Maßstab/Scale	
				Detail.	25.09.09 hsv	2:1 3:1	AdvancedMC connector for MicroTCA 170 pole, press-fit
				Insp.	25.09.09 Lue.		
				Stand.			
35928			HARTING Electronics GmbH & Co. KG				TB 16 11 170 5202 000
Mod.	Dat.	Name	D-32339 ESPELKAMP				

Board Layout 3:1

1) recommended drill hole $\varnothing 0,64 \pm 0,01 \text{ mm}$ (acc. to IEC 60352-5)
through hole dia. (after plating): $\varnothing 0,55 \pm 0,05$

2) fixing-hole optional
non-metallized drillings

3) use self-tapping screws for plastics
2,2x length,
e.g. HARTING Part.-no.: 09 06 001 9974
(length= pcb thickness + 6,5mm to 10mm)

housing contour

centerline of card slot

row for ground

Pos.01

74,8 $\pm 0,05$

69,3 $\pm 0,05$

3) $\varnothing 2 \times 11$

A-A

7,45 $\pm 0,05$

1,9 $\pm 0,08$

12,85 $\pm 0,05$

5,8 $\pm 0,1$

2,1 $\pm 0,2$

4 x 1,5 (=6)

1,5

2,25

26 x 2,25 (=58,5)

1,5

3

Pos. 86

Pos. 85

0,75

84 x 0,75 (=63)

Pos. 170

Pos. 1

centerline of connector

missing dimensions and information acc. to PICMG MicroTCA.0
(Micro Telecommunications Computing Architecture Base Specification)

con:card+

All Dimensions in mm Original Size DIN A 3		Techn. Character.			Nicht tolerierte Maß/Free size tolerances	
		Dat.	Name	Maßstab/Scale		
		Detail.	25.09.09 hsv	2:1 3:1	AdvancedMC connector for MicroTCA 170 pole, press-fit	
		Insp.	25.09.09 Lue.			
		Stand.				
35928		HARTING Electronics GmbH & Co. KG			TB 16 11 170 5202 000	Blatt/ page
Mod.	Dat.	Name	D-32339 ESPELKAMP	Sub.		