



Chipsmall Limited consists of a professional team with an average of over 10 year of expertise in the distribution of electronic components. Based in Hongkong, we have already established firm and mutual-benefit business relationships with customers from,Europe,America and south Asia,supplying obsolete and hard-to-find components to meet their specific needs.

With the principle of "Quality Parts,Customers Priority,Honest Operation,and Considerate Service",our business mainly focus on the distribution of electronic components. Line cards we deal with include Microchip,ALPS,ROHM,Xilinx,Pulse,ON,Everlight and Freescale. Main products comprise IC,Modules,Potentiometer,IC Socket,Relay,Connector.Our parts cover such applications as commercial,industrial, and automotives areas.

We are looking forward to setting up business relationship with you and hope to provide you with the best service and solution. Let us make a better world for our industry!



## Contact us

Tel: +86-755-8981 8866 Fax: +86-755-8427 6832

Email & Skype: [info@chipsmall.com](mailto:info@chipsmall.com) Web: [www.chipsmall.com](http://www.chipsmall.com)

Address: A1208, Overseas Decoration Building, #122 Zhenhua RD., Futian, Shenzhen, China



**Board Layout 3:1**

1) recommended drill hole  $\varnothing 0,64 \pm 0,01 \text{ mm}$  (acc. to IEC 60352-5)  
through hole dia. (after plating):  $\varnothing 0,55 \pm 0,05$

2) fixing-hole optional  
non-metallized drillings

3) use self-tapping screws for plastics  
2,2x length,  
e.g. HARTING Part.-no.: 09 06 001 9974  
(length= pcb thickness + 6,5mm to 10mm)

4x 1,5 (=6)

26x 2,25 (=58,5)

2x 1,5 (=3)

1,5

4,175

2,25

1,35

0,2

centerline of card slot

31,225

3,425

Pos.01

row for ground

2)  $\varnothing 2,4 \pm 0,1$  2x

1) all holes  $\varnothing 0,55 \pm 0,05$

$\varnothing 0,05$  M1 L1

L1

M1

housing contour

74,8  $\pm 0,05$

69,3  $\pm 0,05$

3)  $\varnothing 2 \times 11$

A-A

7,45  $\pm 0,05$

1,9  $\pm 0,08$

12,85  $\pm 0,05$

1,5

2,1  $\pm 0,2$

4 x 1,5 (=6)

5,8  $\pm 0,1$

2,25

26 x 2,25 (=58,5)

1,5

3

Pos. 86

centerline of connector

Pos. 170

M1

Pos. 85

0,75

Pos. 1

84 x 0,75 (=63)

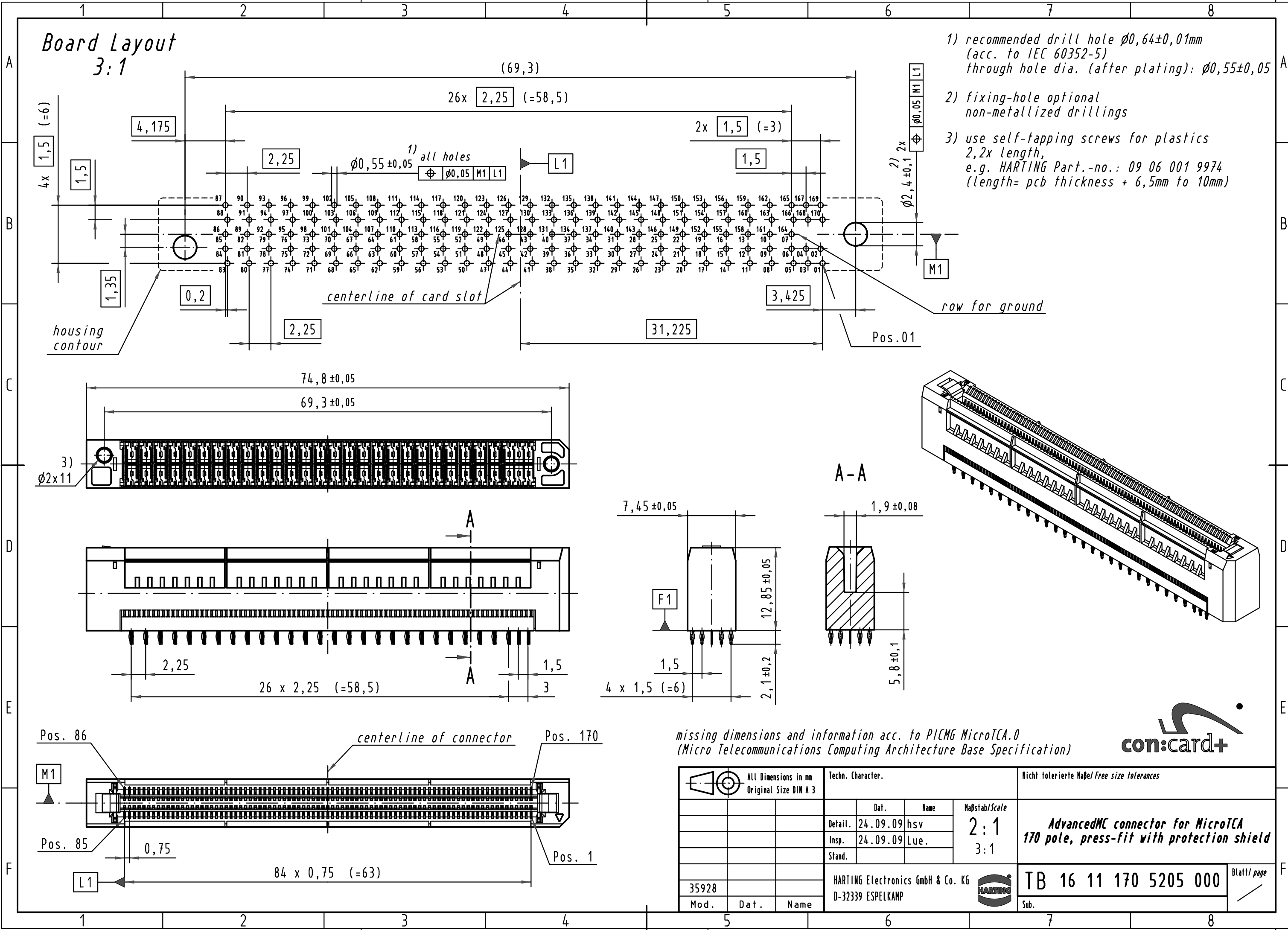
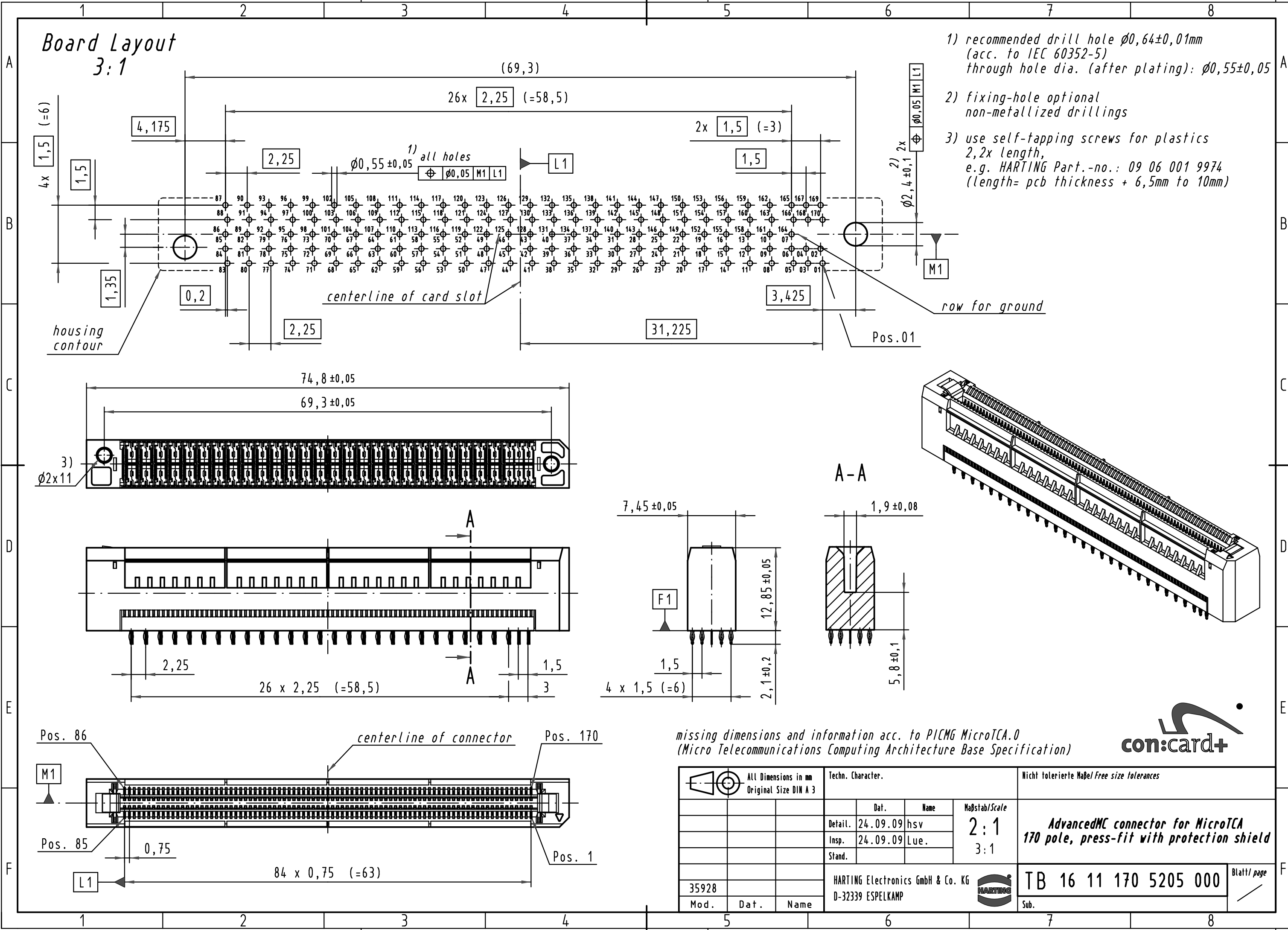
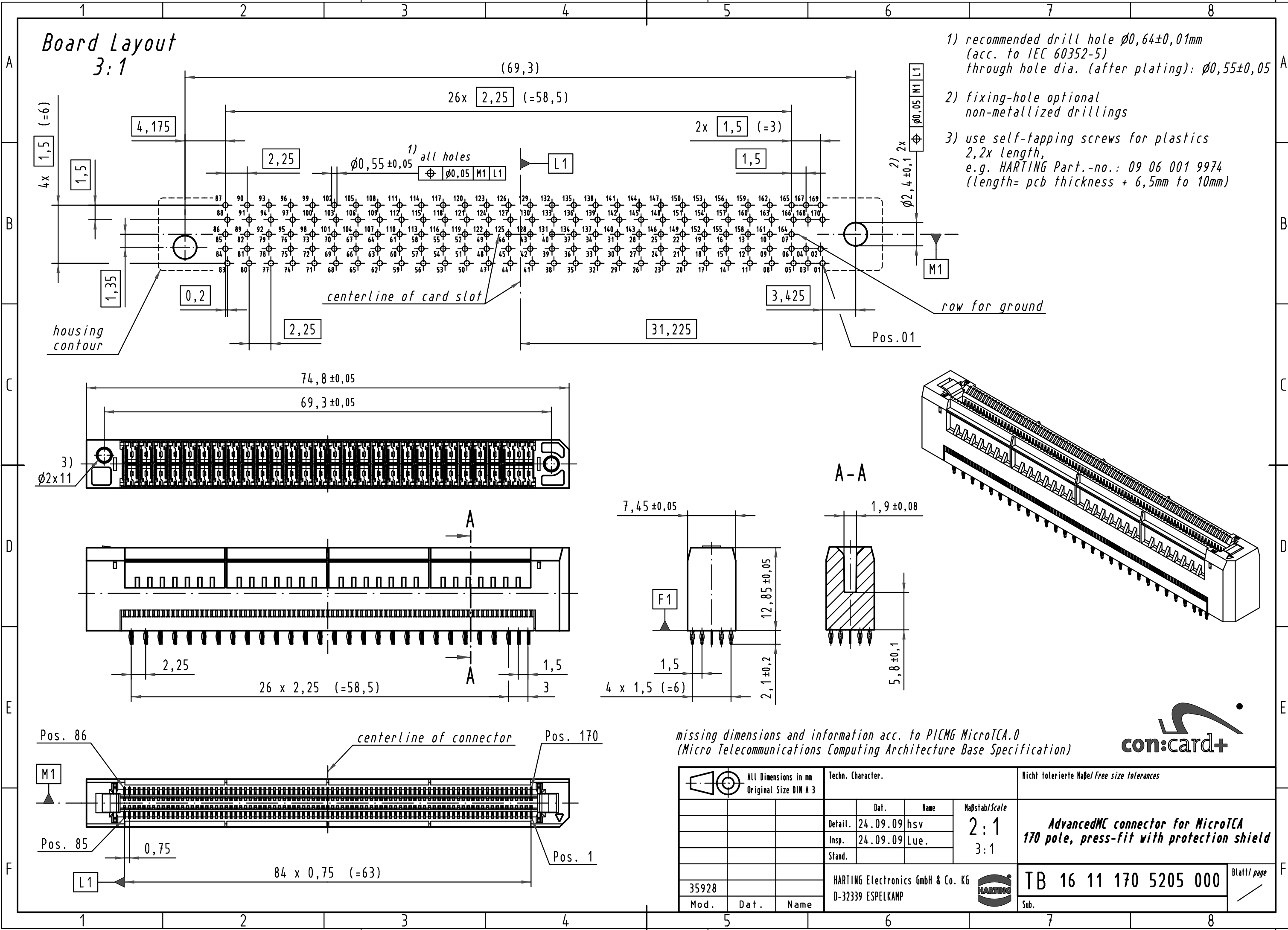
L1

missing dimensions and information acc. to PICMG MicroTCA.0  
(Micro Telecommunications Computing Architecture Base Specification)

con:card+

All Dimensions in mm Original Size DIN A 3		Techn. Character.			Nicht tolerierte Maß/Free size tolerances	
		Dat.	Name	Maßstab/Scale		
		Detail.	24.09.09 hsv	2:1 3:1	AdvancedMC connector for MicroTCA 170 pole, press-fit with protection shield	
		Insp.	24.09.09 Lue.			
		Stand.				
35928		HARTING Electronics GmbH & Co. KG			TB 16 11 170 5205 000	Blatt/ page
Mod.	Dat.	D-32339 ESPELKAMP				
					Sub.	

- # Board Layout 3:1
- Top view of the board layout showing dimensions and pin locations. The layout is defined by a housing contour and a centerline of the card slot. Key dimensions include a total width of 69,3 mm, a pitch of 2,25 mm for the 170 pins, and a 4x1,5 mm mounting area. Pin locations are numbered 1 through 170. A row for ground is indicated at the bottom. A mounting hole M1 is shown with a diameter of 2,4 mm. A note specifies that all holes have a diameter of 0,55 mm ± 0,05 mm.
- 1) recommended drill hole  $\varnothing 0,64 \pm 0,01$  mm (acc. to IEC 60352-5) through hole dia. (after plating):  $\varnothing 0,55 \pm 0,05$  mm
  - 2) fixing-hole optional non-metallized drillings
  - 3) use self-tapping screws for plastics 2,2x length, e.g. HARTING Part.-no.: 09 06 001 9974 (length= pcb thickness + 6,5mm to 10mm)
- Side view of the board layout showing dimensions and pin locations. The layout is defined by a housing contour and a centerline of the card slot. Key dimensions include a total width of 74,8 mm ± 0,05 mm and a pitch of 2,25 mm for the 170 pins. A mounting hole M1 is shown with a diameter of 2,4 mm. A note specifies that all holes have a diameter of 0,55 mm ± 0,05 mm.
- A-A
- Cross-section A-A of the board layout showing dimensions and pin locations. The layout is defined by a housing contour and a centerline of the card slot. Key dimensions include a total width of 7,45 mm ± 0,05 mm, a pitch of 1,5 mm, and a mounting hole M1 with a diameter of 2,4 mm. A note specifies that all holes have a diameter of 0,55 mm ± 0,05 mm.
- 3D perspective view of the board layout showing dimensions and pin locations. The layout is defined by a housing contour and a centerline of the card slot. Key dimensions include a total width of 7,45 mm ± 0,05 mm, a pitch of 1,5 mm, and a mounting hole M1 with a diameter of 2,4 mm. A note specifies that all holes have a diameter of 0,55 mm ± 0,05 mm.
- Bottom view of the board layout showing dimensions and pin locations. The layout is defined by a housing contour and a centerline of the card slot. Key dimensions include a total width of 84 mm ± 0,75 mm and a pitch of 0,75 mm for the 170 pins. A mounting hole M1 is shown with a diameter of 2,4 mm. A note specifies that all holes have a diameter of 0,55 mm ± 0,05 mm.
- missing dimensions and information acc. to PICMG MicroTCA.0  
(Micro Telecommunications Computing Architecture Base Specification)
- con:card+
- | All Dimensions in mm<br>Original Size DIN A 3          |      |      | Techn. Character. |          |      | Nicht tolerierte Maß/Free size tolerances |   |
|--|------|------|-------------------|----------|------|---|---|
| Mod.   | Dat. | Name |                   | Dat.     | Name | Maßstab/Scale                             |   |
| 35928  |      |      |                   | 24.09.09 | hsv  | 2:1<br>3:1                                | AdvancedMC connector for MicroTCA<br>170 pole, press-fit with protection shield |
|  |      |      |                   | 24.09.09 | Lue. |   |   |
|  |      |      |                   |          |      |   |   |
| HARTING Electronics GmbH & Co. KG<br>D-32339 ESPELKAMP |      |      |                   |          |      | TB 16 11 170 5205 000                     | Blatt/ page   |
|  |      |      |                   |          |      | Sub.                                      |   |



**Board Layout 3:1**

1) recommended drill hole  $\varnothing 0,64 \pm 0,01 \text{ mm}$  (acc. to IEC 60352-5)  
through hole dia. (after plating):  $\varnothing 0,55 \pm 0,05$

2) fixing-hole optional  
non-metallized drillings

3) use self-tapping screws for plastics  
2,2x length,  
e.g. HARTING Part.-no.: 09 06 001 9974  
(length= pcb thickness + 6,5mm to 10mm)

4x 1,5 (=6)

26x 2,25 (=58,5)

2x 1,5 (=3)

1,5

4,175

2,25

$\varnothing 0,55 \pm 0,05$

1) all holes  $\varnothing 0,05 \text{ M1 L1}$

L1

1,35

0,2

centerline of card slot

2,25

31,225

3,425

row for ground

Pos.01

74,8  $\pm 0,05$

69,3  $\pm 0,05$

3)  $\varnothing 2 \times 11$

A-A

7,45  $\pm 0,05$

1,9  $\pm 0,08$

12,85  $\pm 0,05$

1,5

2,1  $\pm 0,2$

4 x 1,5 (=6)

5,8  $\pm 0,1$

2,25

26 x 2,25 (=58,5)

1,5

3

Pos. 86

centerline of connector

Pos. 170

M1

Pos. 85

0,75

84 x 0,75 (=63)

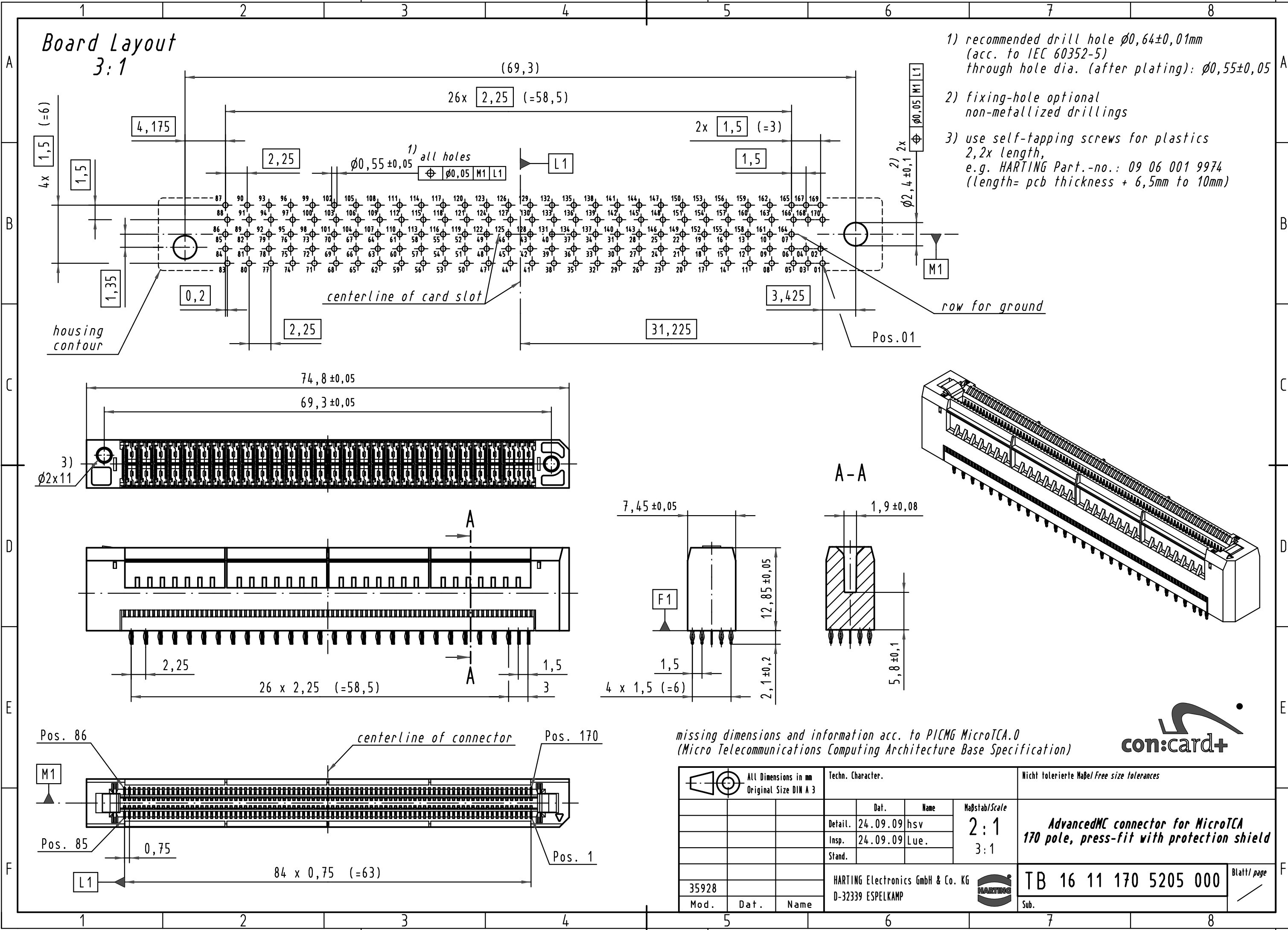
L1

Pos. 1

missing dimensions and information acc. to PICMG MicroTCA.0  
(Micro Telecommunications Computing Architecture Base Specification)

con:card+

All Dimensions in mm Original Size DIN A 3		Techn. Character.			Nicht tolerierte Maß/Free size tolerances	
		Dat.	Name	Maßstab/Scale		
		Detail.	24.09.09 hsv	2:1 3:1	AdvancedMC connector for MicroTCA 170 pole, press-fit with protection shield	
		Insp.	24.09.09 Lue.			
		Stand.				
35928		HARTING Electronics GmbH & Co. KG			TB 16 11 170 5205 000	Blatt/ page
Mod.	Dat.	D-32339 ESPELKAMP				



**Board Layout 3:1**

1) recommended drill hole  $\varnothing 0,64 \pm 0,01 \text{ mm}$  (acc. to IEC 60352-5)  
through hole dia. (after plating):  $\varnothing 0,55 \pm 0,05$

2) fixing-hole optional  
non-metallized drillings

3) use self-tapping screws for plastics  
2,2x length,  
e.g. HARTING Part.-no.: 09 06 001 9974  
(length= pcb thickness + 6,5mm to 10mm)

4x 1,5 (=6)

26x 2,25 (=58,5)

2x 1,5 (=3)

1,5

4,175

2,25

1,35

0,2

centerline of card slot

31,225

3,425

Pos.01

row for ground

2)  $\varnothing 2,4 \pm 0,1$  2x

1) all holes  $\varnothing 0,55 \pm 0,05$

$\varnothing 0,05$  M1 L1

L1

M1

74,8  $\pm 0,05$

69,3  $\pm 0,05$

3)  $\varnothing 2 \times 11$

A-A

7,45  $\pm 0,05$

1,9  $\pm 0,08$

12,85  $\pm 0,05$

1,5

2,1  $\pm 0,2$

4 x 1,5 (=6)

5,8  $\pm 0,1$

2,25

26 x 2,25 (=58,5)

1,5

3

Pos. 86

centerline of connector

Pos. 170

Pos. 85

0,75

Pos. 1

84 x 0,75 (=63)

L1

missing dimensions and information acc. to PICMG MicroTCA.0  
(Micro Telecommunications Computing Architecture Base Specification)

con:card+

All Dimensions in mm Original Size DIN A 3		Techn. Character.			Nicht tolerierte Maß/Free size tolerances	
		Dat.	Name	Maßstab/Scale		
		Detail.	24.09.09 hsv	2:1 3:1	AdvancedMC connector for MicroTCA 170 pole, press-fit with protection shield	
		Insp.	24.09.09 Lue.			
		Stand.				
35928		HARTING Electronics GmbH & Co. KG			TB 16 11 170 5205 000	Blatt/ page
Mod.	Dat.	Name	D-32339 ESPELKAMP	Sub.		