



Chipsmall Limited consists of a professional team with an average of over 10 year of expertise in the distribution of electronic components. Based in Hongkong, we have already established firm and mutual-benefit business relationships with customers from,Europe,America and south Asia,supplying obsolete and hard-to-find components to meet their specific needs.

With the principle of “Quality Parts,Customers Priority,Honest Operation,and Considerate Service”,our business mainly focus on the distribution of electronic components. Line cards we deal with include Microchip,ALPS,ROHM,Xilinx,Pulse,ON,Everlight and Freescale. Main products comprise IC,Modules,Potentiometer,IC Socket,Relay,Connector.Our parts cover such applications as commercial,industrial, and automotives areas.

We are looking forward to setting up business relationship with you and hope to provide you with the best service and solution. Let us make a better world for our industry!



## Contact us

Tel: +86-755-8981 8866 Fax: +86-755-8427 6832

Email & Skype: [info@chipsmall.com](mailto:info@chipsmall.com) Web: [www.chipsmall.com](http://www.chipsmall.com)

Address: A1208, Overseas Decoration Building, #122 Zhenhua RD., Futian, Shenzhen, China



[illegible]

**Board Layout**  
3:1

1) recommended drill hole  $\varnothing 0,64 \pm 0,01\text{mm}$   
(acc. to IEC 60352-5)  
through hole dia. (after plating):  $\varnothing 0,55 \pm 0,05$

2) non-metallized drillings  
for alignment pegs

The drawing includes several views:

- Top View:** Shows the overall dimensions of the board, including a width of 74,8 ± 0,05 mm and a length of 69,3 ± 0,05 mm. It features a grid of pins numbered from 1 to 170, with a centerline of card slot indicated.
- Side View:** Shows the profile of the board, highlighting the housing contour and the position of the connector.
- Detail A-A:** Provides a cross-sectional view of the connector, showing the internal components and the alignment pegs.
- Bottom View:** Shows the underside of the board, detailing the connector's mounting and the centerline of the connector.

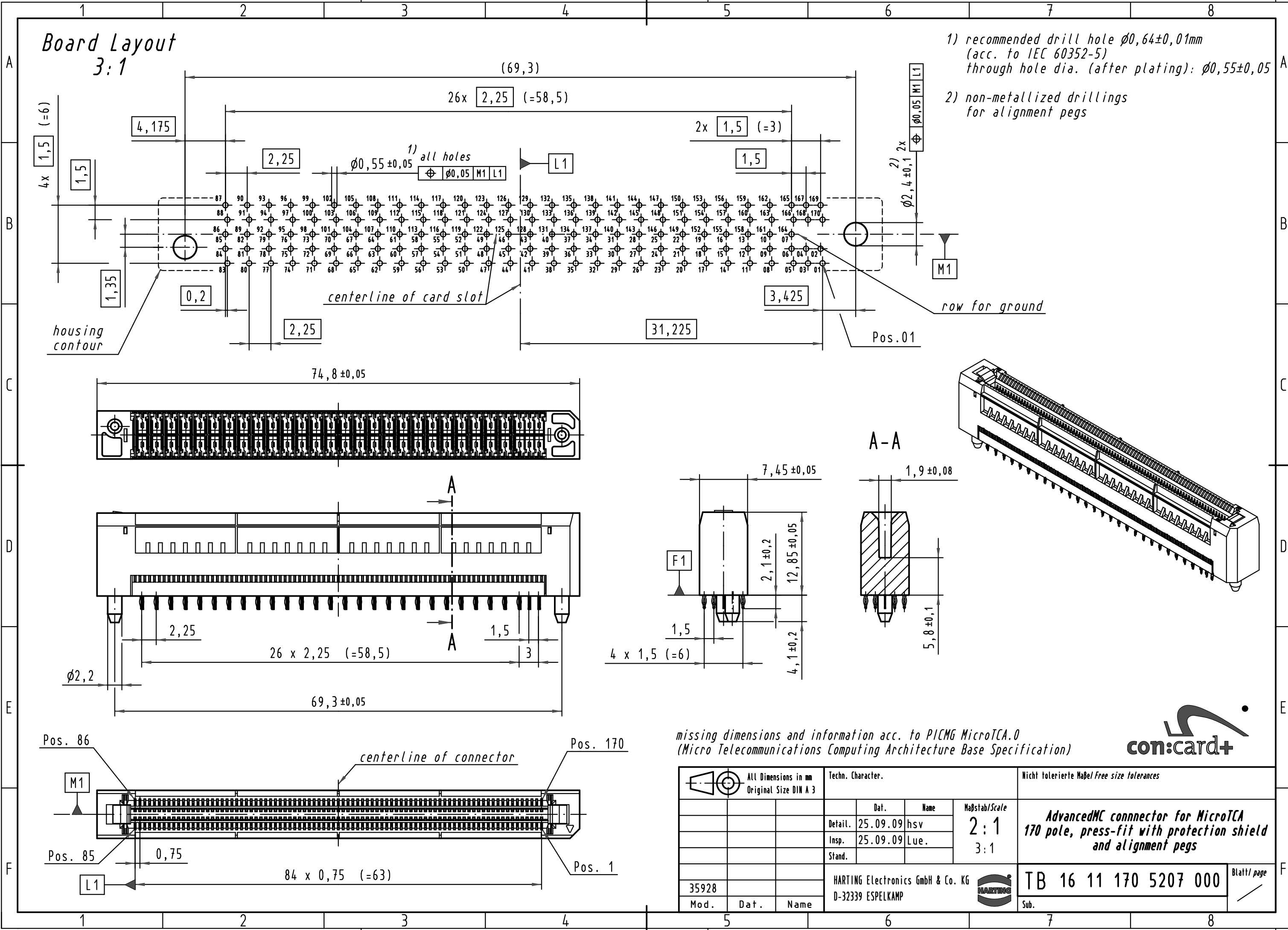
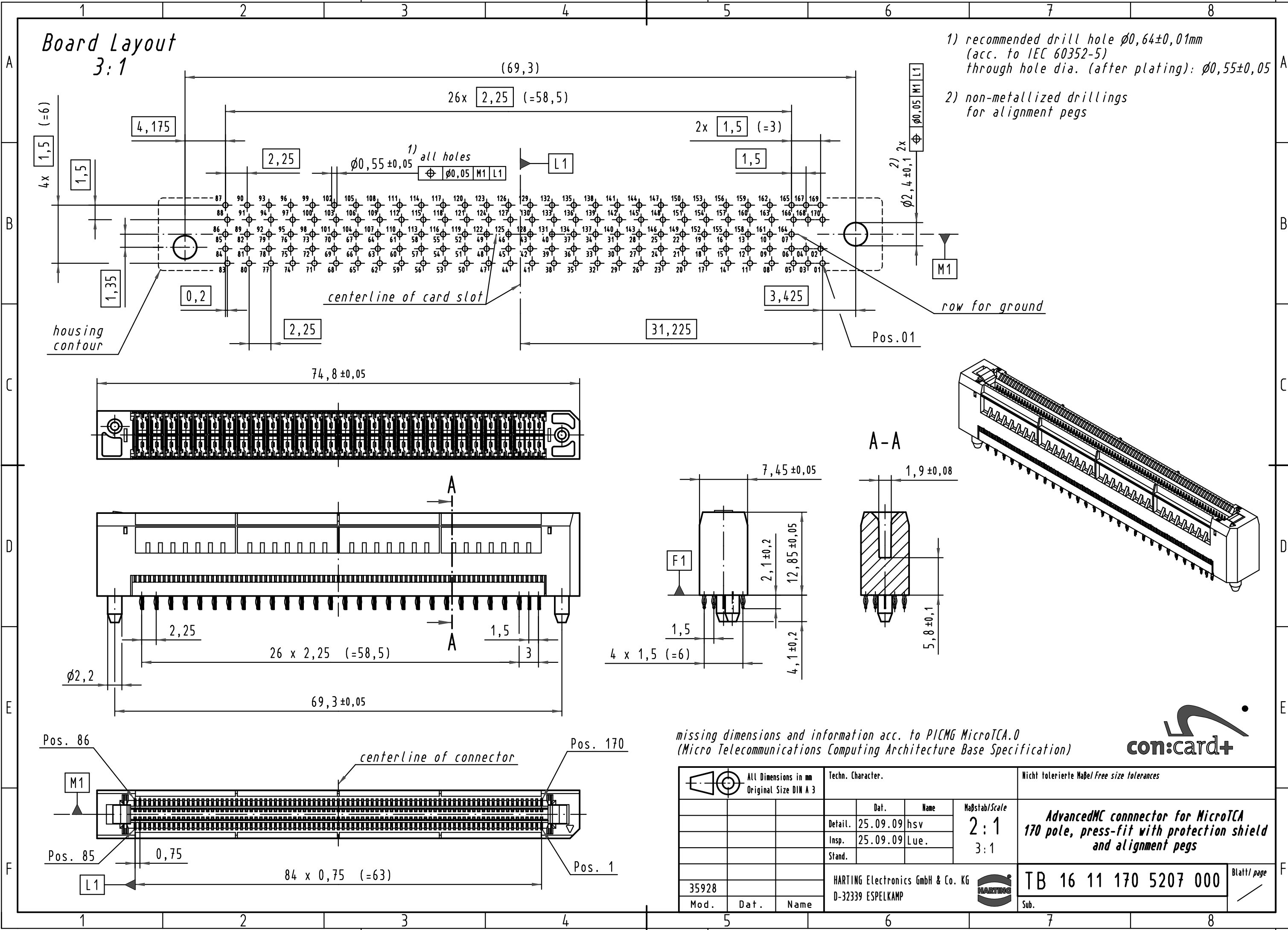
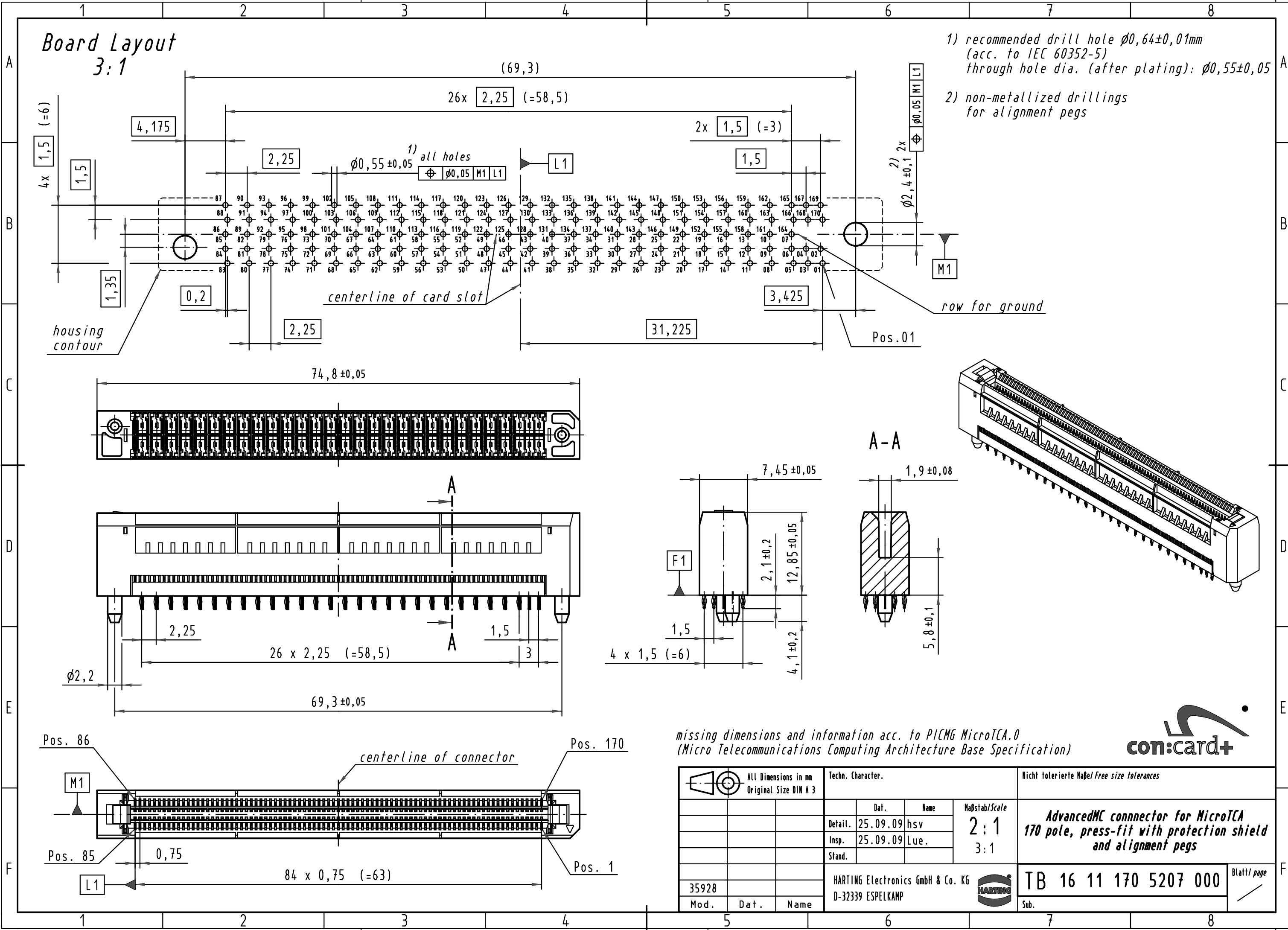
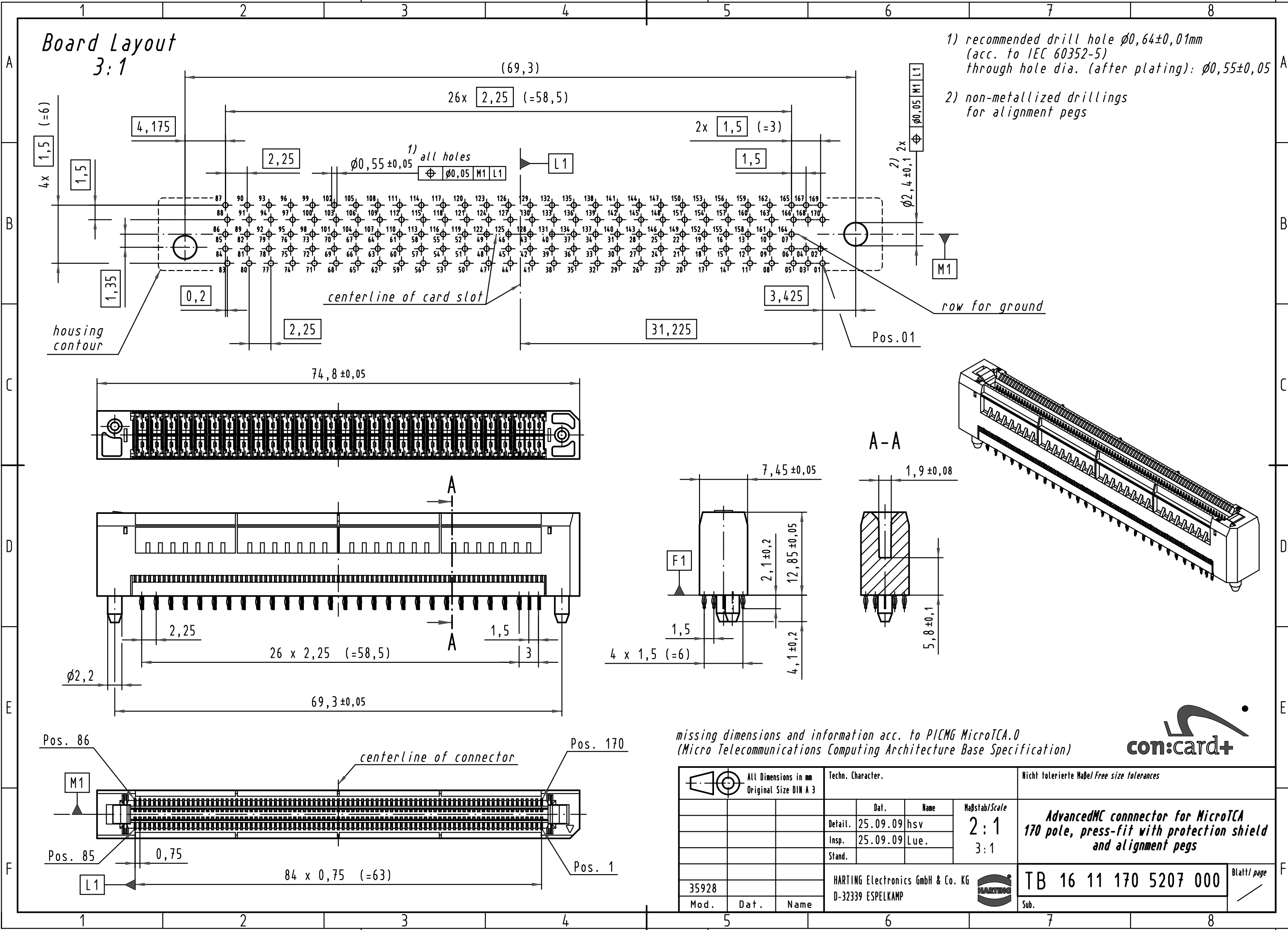
Dimensions and specifications include:

- Pin pitch: 2,25 mm (26 x 2,25 = 58,5)
- Alignment peg diameter:  $\varnothing 0,55 \pm 0,05$
- Housing contour: 4 x 1,5 (=6)
- Connector length: 84 x 0,75 (=63)
- Pin positions: Pos. 86, Pos. 170, Pos. 85, Pos. 1

missing dimensions and information acc. to PICMG MicroTCA.0  
(Micro Telecommunications Computing Architecture Base Specification)

**con:card+**

All Dimensions in mm Original Size DIN A 3		Techn. Character.		Nicht tolerierte Maß/Free size tolerances	
Mod.	Dat.	Name	Maßstab/Scale		
35928			2:1	<b>AdvancedMC connector for MicroTCA 170 pole, press-fit with protection shield and alignment pegs</b>	
			3:1		
HARTING Electronics GmbH & Co. KG D-32339 ESPELKAMP		TB 16 11 170 5207 000		Blatt/page	

[illegible][illegible]