



Chipsmall Limited consists of a professional team with an average of over 10 year of expertise in the distribution of electronic components. Based in Hongkong, we have already established firm and mutual-benefit business relationships with customers from,Europe,America and south Asia,supplying obsolete and hard-to-find components to meet their specific needs.

With the principle of “Quality Parts,Customers Priority,Honest Operation,and Considerate Service”,our business mainly focus on the distribution of electronic components. Line cards we deal with include Microchip,ALPS,ROHM,Xilinx,Pulse,ON,Everlight and Freescale. Main products comprise IC,Modules,Potentiometer,IC Socket,Relay,Connector.Our parts cover such applications as commercial,industrial, and automotives areas.

We are looking forward to setting up business relationship with you and hope to provide you with the best service and solution. Let us make a better world for our industry!



Contact us

Tel: +86-755-8981 8866 Fax: +86-755-8427 6832

Email & Skype: info@chipsmall.com Web: www.chipsmall.com

Address: A1208, Overseas Decoration Building, #122 Zhenhua RD., Futian, Shenzhen, China



Device connector, rear mounting - CA-06P1N12HZ00 - 1619850

Please be informed that the data shown in this PDF Document is generated from our Online Catalog. Please find the complete data in the user's documentation. Our General Terms of Use for Downloads are valid (<http://phoenixcontact.com/download>)



Device connector for rear wall, straight, shielded: yes, SPEEDCON locking, M23, Number of positions: 6, Type of contact: Male connector, Solder connection, Seal, axial, Central fixing

The figure shows the 12-pos. product version



Key Commercial Data

| | |
|----------------------|----------|
| Packing unit | 1 pc |
| Custom tariff number | 85366990 |
| Country of origin | Germany |

Technical data

Temperature range

| | |
|---------------------------------|-------------------|
| Ambient temperature (operation) | -40 °C ... 125 °C |
|---------------------------------|-------------------|

Data of the insulating body

| | |
|--|----------------------|
| Coding | N |
| Insulator material | PBT |
| Contact material | CuZn |
| Contact surface material | Ni/Au |
| Insertion/withdrawal cycles mechanical | 100 |
| Contact connection method | Solder connection |
| Type of contacts | Male connector |
| Number of positions | 6 |
| Contact diameter of power contacts | 2 mm |
| Litz wire cross section of power contacts min. | 0.08 mm ² |
| Litz wire cross section of power contacts max. | 2.5 mm ² |
| Nominal current per power contact at 25°C | 20 A |
| Nominal voltage, power contact | 300 V |

Device connector, rear mounting - CA-06P1N12HZ00 - 1619850

Technical data

Data of the insulating body

| | |
|----------------------|----|
| Overvoltage category | II |
| Degree of pollution | 3 |

Housing data

| | |
|--|--|
| Housing material | Turned parts: copper zinc alloy (CuZn), die-cast parts: zinc (GD-Zn) |
| Type of locking | SPEEDCON locking |
| Degree of protection (when plugged in) | IP67 |
| Thread type | M23 |

Classifications

eCl@ss

| | |
|------------|----------|
| eCl@ss 4.0 | 272607xx |
| eCl@ss 4.1 | 27260701 |
| eCl@ss 5.0 | 27143424 |
| eCl@ss 5.1 | 27143424 |
| eCl@ss 6.0 | 27143424 |
| eCl@ss 7.0 | 27440209 |
| eCl@ss 8.0 | 27440103 |

ETIM

| | |
|----------|----------|
| ETIM 3.0 | EC001121 |
| ETIM 4.0 | EC002635 |
| ETIM 5.0 | EC002061 |

UNSPSC

| | |
|---------------|----------|
| UNSPSC 6.01 | 43172015 |
| UNSPSC 7.0901 | 43201404 |
| UNSPSC 11 | 43172015 |
| UNSPSC 12.01 | 43201404 |
| UNSPSC 13.2 | 43201404 |

Approvals

Approvals

Approvals

UL Recognized / cUL Recognized / EAC / cULus Recognized


Device connector, rear mounting - CA-06P1N12HZ00 - 1619850


Approvals

Ex Approvals


Approvals submitted

Approval details

| | |
|---|-------|
| UL Recognized  | |
| mm²/AWG/kcmil | 14 |
| Nominal current I _N | 20 A |
| Nominal voltage U _N | 300 V |

| | |
|--|-------|
| cUL Recognized  | |
| mm²/AWG/kcmil | 14 |
| Nominal current I _N | 10 A |
| Nominal voltage U _N | 300 V |

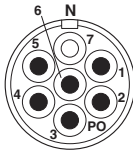
| |
|-----|
| EAC |
|-----|

| |
|--|
| cULus Recognized  |
|--|

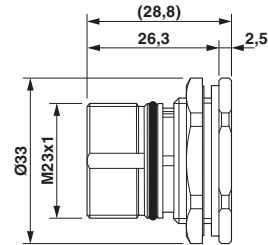
Drawings

Device connector, rear mounting - CA-06P1N12HZ00 - 1619850

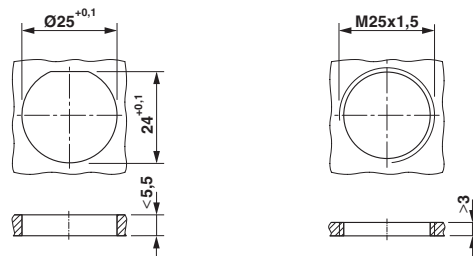
Schematic diagram



Dimensional drawing



Dimensional drawing



Installation dimensions