



Chipsmall Limited consists of a professional team with an average of over 10 year of expertise in the distribution of electronic components. Based in Hongkong, we have already established firm and mutual-benefit business relationships with customers from,Europe,America and south Asia,supplying obsolete and hard-to-find components to meet their specific needs.

With the principle of “Quality Parts,Customers Priority,Honest Operation,and Considerate Service”,our business mainly focus on the distribution of electronic components. Line cards we deal with include Microchip,ALPS,ROHM,Xilinx,Pulse,ON,Everlight and Freescale. Main products comprise IC,Modules,Potentiometer,IC Socket,Relay,Connector.Our parts cover such applications as commercial,industrial, and automotives areas.

We are looking forward to setting up business relationship with you and hope to provide you with the best service and solution. Let us make a better world for our industry!



Contact us

Tel: +86-755-8981 8866 Fax: +86-755-8427 6832

Email & Skype: info@chipsmall.com Web: www.chipsmall.com

Address: A1208, Overseas Decoration Building, #122 Zhenhua RD., Futian, Shenzhen, China



Photovoltaic connector - PV-FT-CF-C-2,5-170-BU-FE - 1623071

Please be informed that the data shown in this PDF Document is generated from our Online Catalog. Please find the complete data in the user's documentation. Our General Terms of Use for Downloads are valid (<http://phoenixcontact.com/download>)



Photovoltaic connector, Nominal current: 27 A, Nom. voltage: 1500 V, Connection type: Crimp, Color: black, Can only be released using a tool

Product Features



Key commercial data

Packing unit	1 pc
Minimum order quantity	50 pc
Weight per Piece (excluding packing)	11.6 GRM
Custom tariff number	85359000
Country of origin	Germany

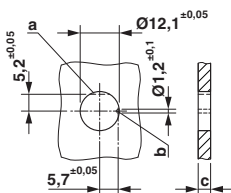
Classifications

ETIM

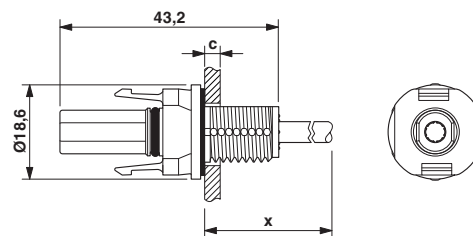
ETIM 5.0	EC002635
----------	----------

Drawings

Dimensional drawing



Dimensional drawing



Dimension x = cable length

Photovoltaic connector - PV-FT-CF-C-2,5-170-BU-FE - 1623071

c: panel thickness - plastic: 2 - 6 mm; metal: 2 - 5 mm

Phoenix Contact 2015 © - all rights reserved
<http://www.phoenixcontact.com>