



Chipsmall Limited consists of a professional team with an average of over 10 year of expertise in the distribution of electronic components. Based in Hongkong, we have already established firm and mutual-benefit business relationships with customers from,Europe,America and south Asia,supplying obsolete and hard-to-find components to meet their specific needs.

With the principle of “Quality Parts,Customers Priority,Honest Operation,and Considerate Service”,our business mainly focus on the distribution of electronic components. Line cards we deal with include Microchip,ALPS,ROHM,Xilinx,Pulse,ON,Everlight and Freescale. Main products comprise IC,Modules,Potentiometer,IC Socket,Relay,Connector.Our parts cover such applications as commercial,industrial, and automotives areas.

We are looking forward to setting up business relationship with you and hope to provide you with the best service and solution. Let us make a better world for our industry!



Contact us

Tel: +86-755-8981 8866 Fax: +86-755-8427 6832

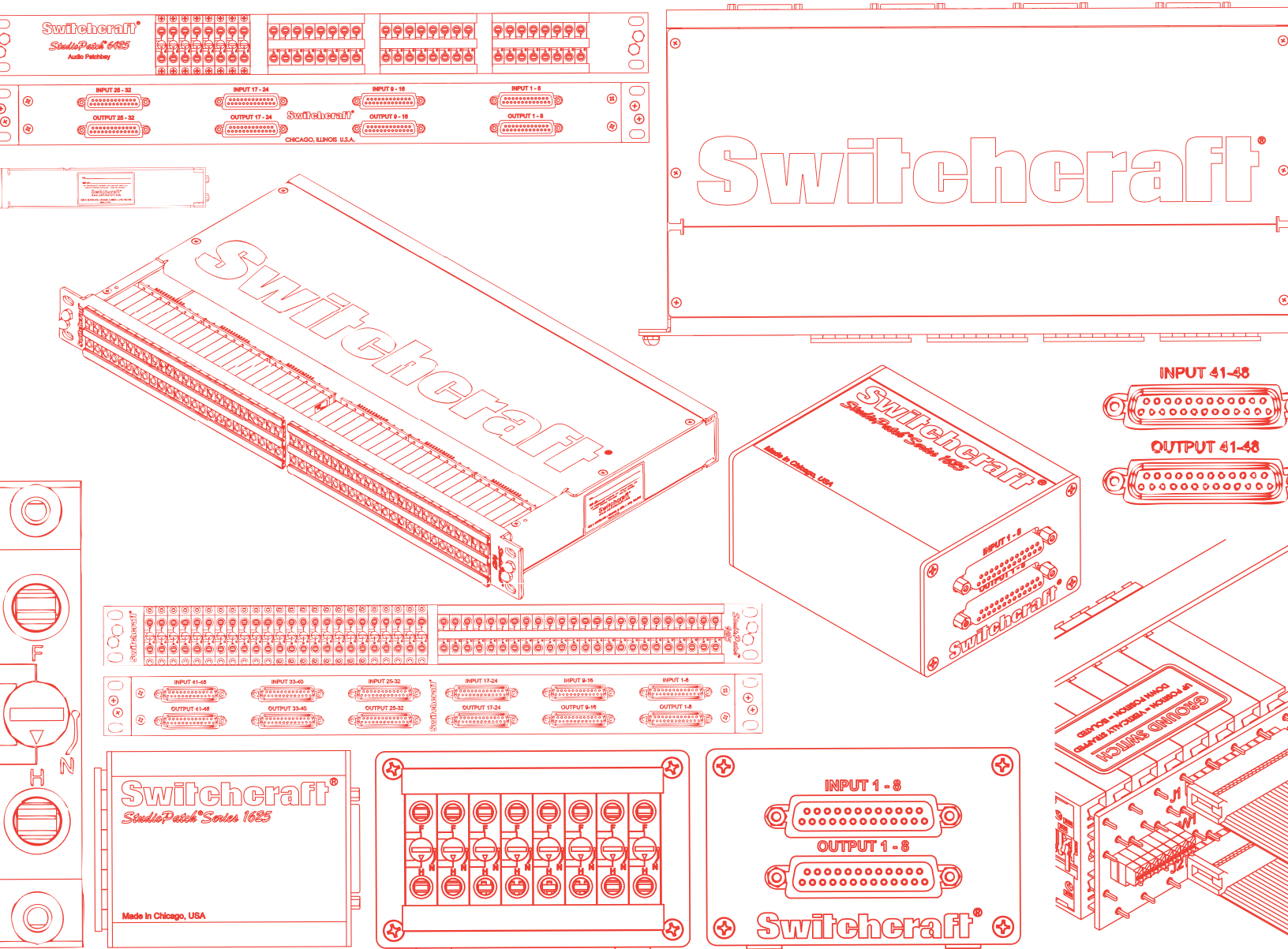
Email & Skype: info@chipsmall.com Web: www.chipsmall.com

Address: A1208, Overseas Decoration Building, #122 Zhenhua RD., Futian, Shenzhen, China





Switchcraft® Pro Audio

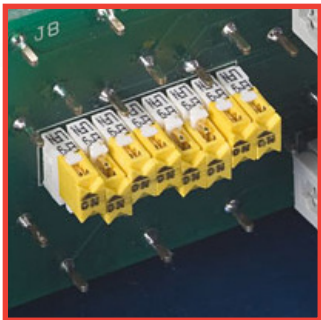
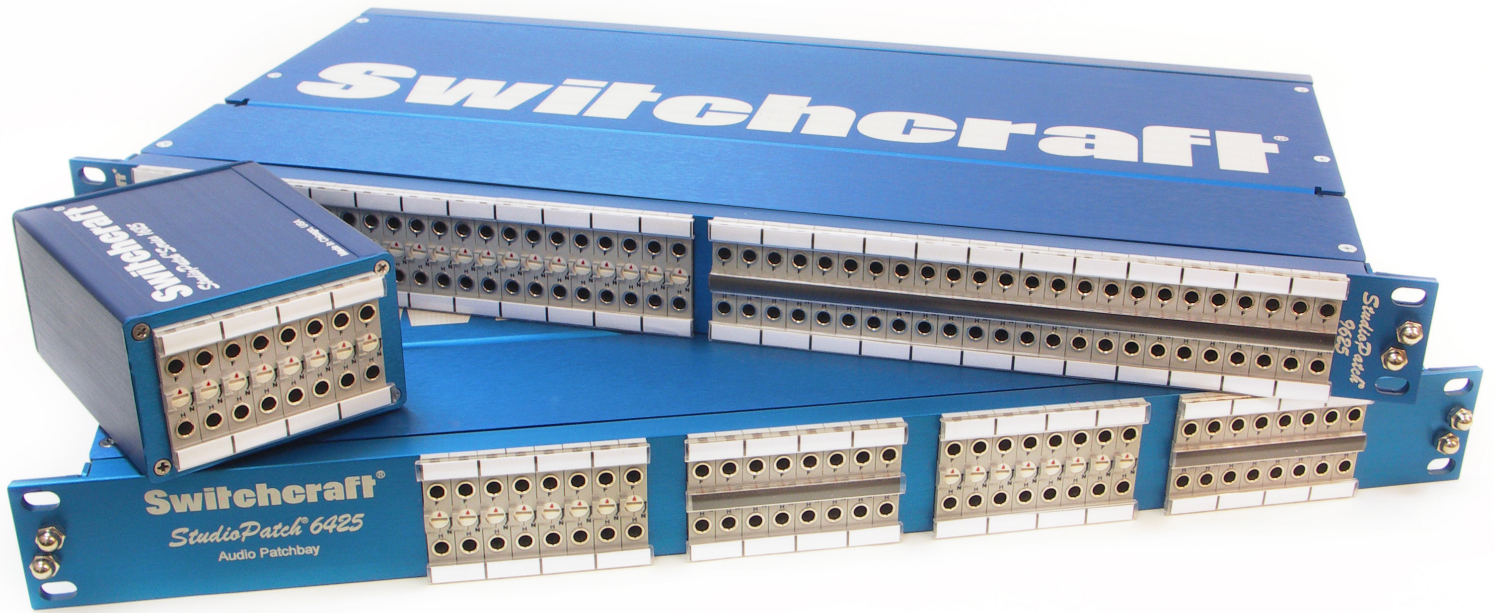


STUDIOPATCH® SERIES AUDIO PATCHBAYS

NPB | 563C

STUDIOPATCH® SERIES AUDIO PATCHBAYS

NPB | 563C



GROUNDING SWITCHES

Up = sleeves vertically strapped
Down = sleeves isolated

StudioPatch® Series Audio Patchbays utilize Switchcraft's EZ Norm technology, allowing signal flow to be changed from the front of the patchbay using a standard screwdriver.

Every StudioPatch® Series patchbay also comes with easy access programmable grounds, making it possible to customize the ground setting of each channel to either vertically strapped or isolated with the flip of a switch.



EZ NORM JACK

Change the signal flow of each channel from (F) Full to (H) Half to (N) Non-Normalled with the twist of a standard screwdriver

DB25 I/O connections wired to the TASCAM DTRS pinout allow for direct connection to today's most popular audio interfaces and outboard gear, creating greater flexibility in your studio.

StudioPatch® Series audio patchbays - featuring front-of-rack access programmable normalling and easy access programmable grounds!

Other available accessories: DB25 Breakout Cables, MULT Connectors and TT Patchcords

STUDIOPATCH® SERIES AUDIO PATCHBAYS

NPB | 563C

STUDIOPATCH® SERIES AUDIO PATCHBAY OPTIONS



StudioPatch® 9625 Patchbay

The 9625 is called out around the world as the patchbay of choice for professional recording studios, broadcast facilities and mobile production units. It features 48 channels (96 TT/bantam jacks), DB25 I/O, front-of-rack access programmable normalling and easy access programmable grounds all in 1RU!

Part Number: 9625



StudioPatch® 6425 Patchbay

The 6425 is ideal for fixed installation in studios where less patching is required than a standard 48 channel patchbay. It features 32 channels (64 TT/bantam jacks), DB25 I/O, front-of-rack access programmable normalling and easy access programmable grounds all in 1RU!

Part Number: 6425



StudioPatch® 1625 TT Patch Module

The 1625 is a modular, eight channel patchbay perfect for desktop or mobile applications where limited patching is required, or for building a full size patchbay over time as your studio grows. The 1625RACK, a 1.5RU rack tray can accommodate up to five 1625 patch modules.

Part Number: 1625

*1625RACK sold separately.