



Chipsmall Limited consists of a professional team with an average of over 10 year of expertise in the distribution of electronic components. Based in Hongkong, we have already established firm and mutual-benefit business relationships with customers from,Europe,America and south Asia,supplying obsolete and hard-to-find components to meet their specific needs.

With the principle of “Quality Parts,Customers Priority,Honest Operation,and Considerate Service”,our business mainly focus on the distribution of electronic components. Line cards we deal with include Microchip,ALPS,ROHM,Xilinx,Pulse,ON,Everlight and Freescale. Main products comprise IC,Modules,Potentiometer,IC Socket,Relay,Connector.Our parts cover such applications as commercial,industrial, and automotives areas.

We are looking forward to setting up business relationship with you and hope to provide you with the best service and solution. Let us make a better world for our industry!



Contact us

Tel: +86-755-8981 8866 Fax: +86-755-8427 6832

Email & Skype: info@chipsmall.com Web: www.chipsmall.com

Address: A1208, Overseas Decoration Building, #122 Zhenhua RD., Futian, Shenzhen, China



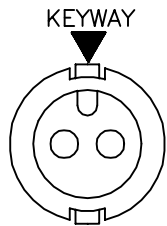
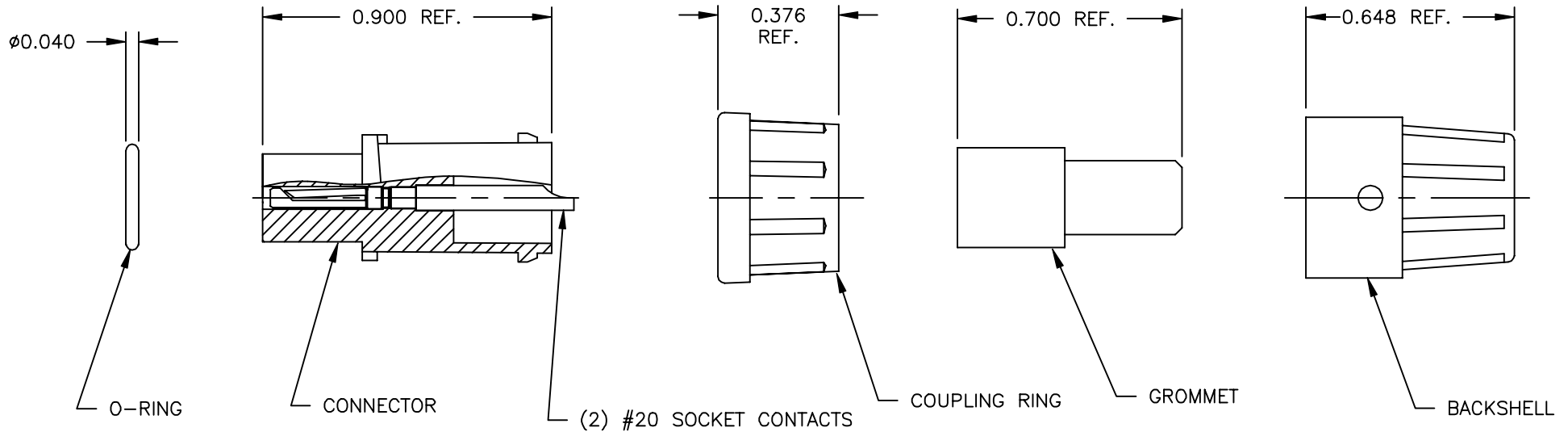
PART NUMBER: 16282-2SG-3XX

CUSTOMER PRINT

ASS'Y P/N	CABLE O.D
16282-2SG-311	0.09 - 0.14
16282-2SG-315	0.15 - 0.17
16282-2SG-318	0.18 - 0.20

NOTES:

1. PARTS TO BE BULK PACKED.
2. CONTACTS TO BE INSERTED INTO CABLE CONNECTOR W/SOLDER CUP FACING KEYWAY (12:00)



FACE VIEW

CUSTOMER APPROVAL

CHECKED BY: _____

APPROVED BY: _____

DATE: _____

A	AN	02-20-04	CREATED DRAWING PER DOR: 04-E149JC
REV.	INIT.	DATE	DESCRIPTION
<small>ALL INFORMATION ILLUSTRATED IS THE PROPERTY OF CONXALL CORPORATION. UNAUTHORIZED DUPLICATION OR DISTRIBUTION OF THIS DOCUMENT IS PROHIBITED.</small>			<small>ORIG. DRAWN BY: AN</small> <small>DATE: 02-19-04</small>
<small>ALL UNITS ARE IN FEET, INCHES, FRACTION OF INCHES AND DECIMALS.</small>			
<small>UNLESS OTHERWISE SPECIFIED TOLERANCES: 3 PLACE DECIMALS ±.005 ANGLES ±1° FRACTIONS ±1/16</small>			
<small>▷ = CRITICAL CHARACTERISTIC FLAG PER SPEC. XXXX</small>			<small>601 E. WILDWOOD VILLA PARK, IL 60181</small> <small>TITLE: CONNECTOR KIT (2) #20 SOCKET CONTACTS MICRO-CON-X</small> <small>CUSTOMER: STANDARD PRODUCT</small>
SCALE	SIZE	SHEET	
NTS	A	1 OF 1	
FILE:	DIRECTORY:	PART NUMBER:	REV.
16282-2SG-3XX	CATALOG	16282-2SG-3XX	A