



Chipsmall Limited consists of a professional team with an average of over 10 year of expertise in the distribution of electronic components. Based in Hongkong, we have already established firm and mutual-benefit business relationships with customers from,Europe,America and south Asia,supplying obsolete and hard-to-find components to meet their specific needs.

With the principle of “Quality Parts,Customers Priority,Honest Operation,and Considerate Service”,our business mainly focus on the distribution of electronic components. Line cards we deal with include Microchip,ALPS,ROHM,Xilinx,Pulse,ON,Everlight and Freescale. Main products comprise IC,Modules,Potentiometer,IC Socket,Relay,Connector.Our parts cover such applications as commercial,industrial, and automotives areas.

We are looking forward to setting up business relationship with you and hope to provide you with the best service and solution. Let us make a better world for our industry!



Contact us

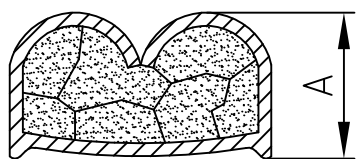
Tel: +86-755-8981 8866 Fax: +86-755-8427 6832

Email & Skype: info@chipsmall.com Web: www.chipsmall.com

Address: A1208, Overseas Decoration Building, #122 Zhenhua RD., Futian, Shenzhen, China

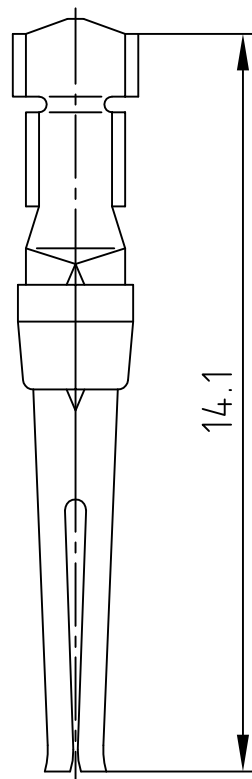


used for: D-SUB

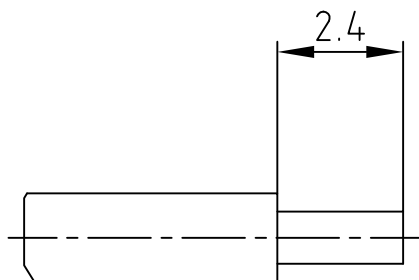


(b)

Wire size AWG	Crimp height A
24	0,68 - 0,86
22	0,68 - 0,86
20	0,68 - 0,86



STRIPPING DIMENSIONS



TECHNICAL DATA:

Material Stamped Contacts: Phosphor Bronze

(c) Finish: Gold Flash over Nickel in the Contact Area

Temperature Range: -55°C to +125°C

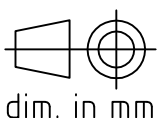
Rated Current: 7.5A

Contact Resistance: <= 10mOhm

Crimping: Use Crimp Tool 360X10079X

Directive 2002/95/EC RoHS compliant

THIS DRAWING MAY NOT BE COPIED OR REPRODUCED IN ANY WAY, AND MAY NOT BE PASSED ON TO A THIRD PARTY WITHOUT WRITTEN PERMISSION.
 OWNERSHIP AND COPYRIGHT OF CONEC GmbH
 DO NOT ALTER CAD DRAWING BY HAND

				tolerance		 dim. in mm
rev.	description	date	name	2005	date	
1 x c	Ä 4116	26.09.2011	Lehmen.	d-old		
2 x b	Ä 2197	01.04.2005	HS			
a	Original					



scale:	5:1
material:	SEE NOTES
title:	SOCKET CONTACT CRIMP (b) AWG 24-20
dwg no:	16K2A405A
part no:	162A11849X
	DIN-A 4 sh: 1/1