



Chipsmall Limited consists of a professional team with an average of over 10 year of expertise in the distribution of electronic components. Based in Hongkong, we have already established firm and mutual-benefit business relationships with customers from,Europe,America and south Asia,supplying obsolete and hard-to-find components to meet their specific needs.

With the principle of “Quality Parts,Customers Priority,Honest Operation,and Considerate Service”,our business mainly focus on the distribution of electronic components. Line cards we deal with include Microchip,ALPS,ROHM,Xilinx,Pulse,ON,Everlight and Freescale. Main products comprise IC,Modules,Potentiometer,IC Socket,Relay,Connector.Our parts cover such applications as commercial,industrial, and automotives areas.

We are looking forward to setting up business relationship with you and hope to provide you with the best service and solution. Let us make a better world for our industry!



Contact us

Tel: +86-755-8981 8866 Fax: +86-755-8427 6832

Email & Skype: info@chipsmall.com Web: www.chipsmall.com

Address: A1208, Overseas Decoration Building, #122 Zhenhua RD., Futian, Shenzhen, China



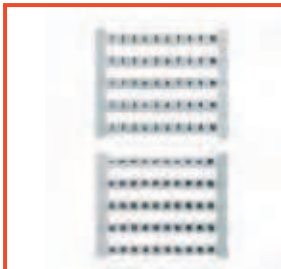
Identification systems	Introduction	A
	Terminal markers	B
	Wire and cable markers	C
	Device markers	D
	Printing systems	E
Appendix	Weidmüller Service	V
	Index Search according to Type or order number, Worldwide activities	X

Identification systems

Terminal markers

Dekafix card, printed

Page B.6



MultiCard Dekafix, WS, ZS

Page B.10



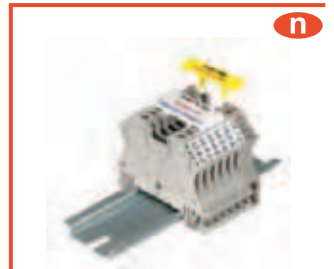
MultiFit

Page B.16



WAD MultiCard

Page B.34



Tag carriers

Page B.35



ELS

Page B.37



Wire and cable markers

SlimFix

Page C.4



SlimFix Clip

Page C.6



TM-I

Page C.8



Transparent sleeves

Page C.10



Wire and cable markers

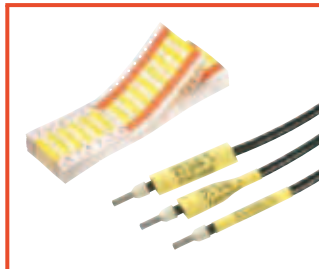
ELS

Page C.13



TwinMark

Page C.14



WriteOn

Page C.17



CableLine®

Page C.18



Stainless steel markers /

Cable ties

Page C.55



Device markers

DMC

Page D.3



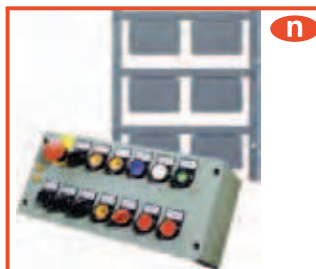
ESG

Page D.4



SwitchMark / ClipCard CC

Page D.6



Labels / KSW

Page D.11



Identification systems

Printer systems

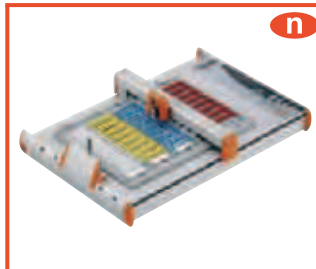
PrintJet PRO

Page E.3



MCP Plotter

Page E.4



Thermal transfer printer

Page E.8



Software

M-Print® PRO

Page E.12



Identification systems

Identification systems	Systemised marking	A.2
	Materials	A.4
	Weidmüller tests and test procedures	A.5

System-based marking for optimized processes

A

For more than 25 years, the Weidmüller name has stood for innovative and mutually compatible marking and printing systems with all the necessary software and service. As a technological and market leader, we feel it is our duty to move with the times. Our products set standards and play a significant part in helping you to master increasingly complex production processes efficiently and reliably.

The PrintJet PRO is part of this unique concept that unites hardware, software and service that have been developed and synchronised to perfection, offering everything from a single source. All of the elements knit together, offering you all sorts of new options in terms of marking terminals, wires, cables and devices. For big companies or small, the system has just the right modules for your needs and can be fine-tuned to meet specific requirements.

Marker



Weidmüller has set new standards in its field with its MultiCard program. With a choice of 160 versions and the ongoing expansion of its portfolio, which already includes labels, shrinkable tubing and CableLine® markers, it caters for all possible needs. If necessary, we are happy to develop a customised solution for your specific needs too.

- A large selection of markers for connectors, cables, wires and devices
- Also available for terminals and components from other manufacturers
- Print is highly resistant to industrial environment
- We deliver blank, standard, or custom-printed markers according to your needs

Printer



The PrintJet PRO is a groundbreaking printer, setting new standards in terms of performance and innovation. Our range of printing systems also includes the THM Plus for shrinkable tubing and the SMark Laser for printing larger batches quickly and in top quality.

- The right printing system for any marker type
- Laser, ink-jet and thermal-transfer systems
- Very little maintenance and easy to operate
- Diverse range of connection possibilities

Software



Import, edit and manage your data with our software package that consists of modules catering for the entire field of application, from the CAD workplace to implementing cabinet components in close cooperation with leading CAE manufacturers.

- Data transfer from the leading CAE systems
- Import wizard with use of import filter
- Convenient and quick design by means of a wide range of automatic filling functions
- Work easier with individual templates for reoccurring processes

Service



We are here to help you with your requirements at all times, assisting you with everything from installation to training sessions and a whole host of different solutions such as preprinted markers. We break down barriers and are there for you, wherever you are in the world.

- Professional consulting for all marking and printing system questions
- Customized solutions which take your application into account
- Representatives throughout the world with trained specialists on-site
- Online software training via web conference tool

Materials

Material	Description
Polyamide	<p>Polyamide (PA) is one of the most common commercial plastics. The advantages of this material are its very good electrical and mechanical properties, its flexibility and resistance to breakage. Furthermore, owing to its chemical structure, PA achieves good fire resistance even without the use of flame-retardant agents.</p> <p>Temperature range: -40 °C to +100 °C</p>
PVC	<p>Plasticised PVC is manufactured from polyvinyl chloride and softeners together with additives like stabilisers and lubricants. It is generally transparent but can be dyed any colour. PVC is resistant to corrosive salt solutions and the majority of acids and alkalis. Owing to its chemical structure, raw PVC resists ageing and is not attacked by oxygen or ozone</p> <p>Temperature range: -30 °C to +80 °C</p>
Polypropylene	<p>Polypropylene (PP) belongs to the polyolefins group of materials. These partially crystallised synthetic materials are distinguished by their good chemical resistance and good electrical properties. PP can be attacked by strongly oxidising chemicals.</p> <p>Temperature range: -40 °C to +80 °C</p>
Stainless steel	<p>SS 2348 corresponds to Al Si 316 and steel grade 1.4404. This acid-resistant steel contains at least 17 % chromium, 11 % nickel and 2 % molybdenum. The material exhibits good weathering resistance in salt-laden and moist atmospheres and does not corrode in the presence of acids.</p> <p>Temperature range: -80 °C to +500 °C</p>
Hard PVC	<p>Hard PVC is manufactured from polyvinyl chloride without plasticisers. This is the reason for its high mechanical strength, rigidity and hardness characteristics. In addition, high resistance to chemicals is further distinguishing feature. The absence of plasticisers in hard PVC ensures that the material 'self-extinguishes' once it is removed from the flames.</p> <p>Temperature range: -30 °C to +80 °C</p>
POM	<p>Polyacetal is also known as polyoxymethylene, abbreviated to POM. Its distinguishing characteristics include a high-degree of tensile strength, hardness and stiffness across a wide temperature range.</p> <p>Temperature range: -40 °C to +80 °C</p>

Weidmüller tests and test procedures

Tests	Test conditions/requirements
Materials test	Flammability in accordance with UL94 Shore A hardness test A – ISO 868 Surface resistance – DIN IEC 60093
Ageing	All marker materials are tested for their ageing resistance. Weidmüller test specification LPV 2216.
Function test of PTFE and PVC wire insulation	Suitability of markers for installation at temperatures between –10 °C to +40 °C. Correct attachment test of the respective marker size for the smallest to the largest wire diameter. Test for symmetry of the marker on the wire
Vibration resistance on carrier	Vibration test, industry, in accordance with: DIN EN 60068-2-6, sinusoidal (3 axes, 10 cycles per axis, acceleration 5g, frequency 10-500 Hz, sweep rate 1 octave/minute) Weidmüller test specification – LPV 2272
Wipe resistance	Resistance of the print against the affects of hand perspiration, machine oil, water and ethanol. A slight alteration is permissible; however, clear identification (legibility) must be guaranteed. In the case of printing subject to VDE 0611 pt 4 (rating plate details), the wipe resistance against water and mineral spirits is to be tested for a period of 15 minutes. Standards: DIN VDE 0611-4 / Pt. 3.1.3 DIN EN 60947-1/ Pt. 5.1 DIN EN 60742, CEI 16-7 Weidmüller test specification – LPV 2166
Scratch resistance	No scratches may be visible on the base or the carrier following the fingernail test. A slight alteration is permissible; however, clear identification must be guaranteed. Weidmüller test specification – LPV 2165
UV light resistance	The function must be guaranteed. The print or colour of the product must be clearly recognisable. Standard: DIN EN ISO 4892-2; Weidmüller test specification – LPV 2216
Chemical resistance of the print	Weidmüller test specification – LPV 2167

Owing to the sheer number of possible applications and environmental influences such as moisture, radiation, gases or heat/cold to which the products can be exposed, Weidmüller accepts no liability for the suitability of products in all customer applications. Suitability tests for specific applications must therefore be carried out by the customer. However, Weidmüller will be happy to provide help and advice upon request.

Due to the different identification system available on the market, we wish to point out that Weidmüller does not guarantee industrial identification products if the Weidmüller components (markers – transparent sleeves – ink/toner/colour ink ribbons – printing systems) are combined with third-party products, unless Weidmüller has explicitly agreed for the purpose of an individual application.

Terminal markers

Terminal markers	Introduction	B.2
	Selection table – terminal markers	B.3
	DEK card	B.6
	DEK MultiCard	B.10
	WS / ZS	B.12
	MultiFit for use with other makes of terminals	B.16
	Cross-reference table	B.20
	Terminal marker WAD	B.34
	Tag carrier	B.35

Terminal markers

Weidmüller's multitude of different terminal markers enable users to solve virtually every labelling task of all types of wire and cable connectors. Whether multi-character labelling, ready-to-use markers with standard printing or individual, custom markers, whether white or coloured or group designations at terminals, the comprehensive range of Weidmüller products solves every marking task simply, quickly and clearly.

The tables on the following pages show which markers fit the various terminal series. The terminal pitch governs the selection of a marker. For example, a WDU 2.5 terminal has a pitch of 5 mm, the WS 12/5 marker is 12 mm long and suitable for a 5 mm pitch.

Whole blocks of terminals can be marked as a strip using the Weidmüller system. When a terminal with a larger pitch has to be marked (e.g. WDU 16), a smaller marker (e.g. WS 12/5) can be clipped onto it. Most of the markers are compatible with each other.

The two traditional marker series, DEK and WS, are available as ready-to-use markers. And these markers are also available in the MultiCard format for printing by users themselves.

MultiCards can be printed on with the innovative PrintJet, Smark Laser, Plotter MCP Plus or MC-Mobilo printing systems, using M-Print PRO® software.

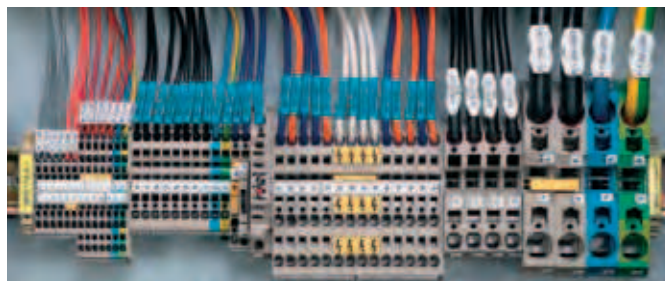
To see a small selection of the Weidmüller markers, order our bag of samples, order No. **1646670000**.

Owing to the sheer number of possible applications and environmental influences such as moisture, radiation, gases or heat/cold to which the products can be exposed, Weidmüller accepts no liability for the suitability of products in all customer applications. Suitability tests for specific applications must therefore be carried out by the customer. However, Weidmüller will be happy to provide help and advice upon request.

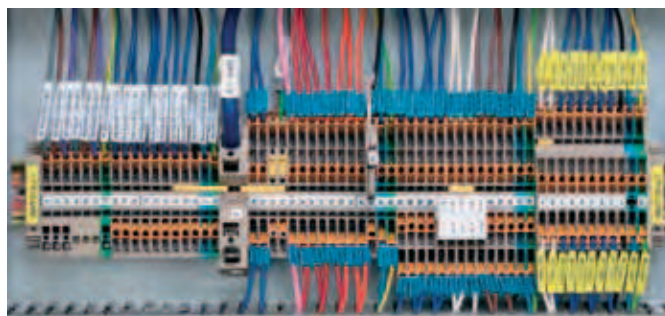
W series



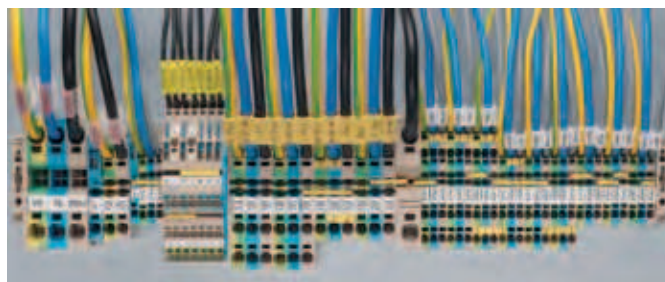
Z series



I series



P series



Due to the different identification system available on the market, we wish to point out that Weidmüller does not guarantee industrial identification products if the Weidmüller components (markers – transparent sleeves – ink/toner/colour ink ribbons – printing systems) are combined with third-party products, unless Weidmüller has explicitly agreed for the purpose of an individual application.

Selection table

Designation	Terminal width	DEK	WS	ZS	SchT 7	SchT 9/4	SchT 14/6	WTS 3/4	WGB 5 / WAD 5	WGB 8 / WAD 8	WAD 12	WAD 27	ZGB 15 / ZGB 30	BZT 1	BZT 2	EM 8/30	Other
ADK 1	6	6	-	-	-	-	-	-	-	-	-	-	-	-	-	-	-
AKA 4	6	6	-	-	-	-	-	-	-	-	-	-	-	-	-	-	-
AKE 2.5/AKZ 2.5...	5	5	-	-	-	-	-	-	-	-	-	-	-	-	-	-	-
AKE 2.5	5.1	5	-	-	-	-	-	-	-	-	-	-	-	-	-	-	-
AKE 4	7	6.5	-	-	-	-	-	-	-	-	-	-	-	-	-	-	-
AKZ 1.5...	5	5	-	-	-	-	-	-	-	-	-	-	-	-	-	-	-
AKZ 1.5-2.5	5.1	5	-	-	-	-	-	-	-	-	-	-	-	-	-	-	-
AKZ 4	6.1	6	-	-	-	-	-	-	-	-	-	-	-	-	-	-	-
AKZ 4.../AKB 4...	6	6	8/5	-	-	x	-	-	-	-	-	-	-	-	-	-	-
AL 1	6.5	6.5	-	-	-	-	-	-	-	-	-	-	-	-	-	-	-
ASK 1	8	8	-	-	x	-	-	-	-	-	-	-	-	-	-	-	-
AST 1-4/35	6.2	6	-	-	-	-	-	-	-	-	-	-	-	-	-	-	-
AST 5/35	6.5	6	-	-	-	-	-	-	-	-	-	-	-	-	-	-	-
BZT ZVL 1.5	5.08	5	12/5	-	-	-	-	-	-	-	-	-	-	-	-	-	-
DK 4...	6	6	-	-	-	-	-	-	-	-	-	-	-	-	-	-	-
DKT 4...	6	6	-	-	-	-	-	-	-	-	-	-	-	-	-	-	-
DLA 2.5...	6	6	8/5	-	x	x	x	-	-	-	-	-	-	-	-	-	-
DLD 2.5...	6	6	8/5	-	x	x	x	-	-	-	-	-	-	-	-	-	-
DLI 2.5	6	6	8/5	-	x	x	x	-	-	-	-	-	-	-	-	-	-
EK 10	10	5	-	-	-	-	-	-	-	-	-	-	-	-	-	-	-
EK 16	12	5	-	-	-	-	-	-	-	-	-	-	-	-	-	-	-
EK 2.5...	6	6	-	-	-	-	-	-	-	-	-	-	-	-	-	-	-
EK 35...	16	5	-	-	-	-	-	-	-	-	-	-	-	-	-	-	-
EK 4...	6.5	6.5	-	-	-	-	-	-	-	-	-	-	-	-	-	-	-
EK 6/35	8	8	-	-	-	-	-	-	-	-	-	-	-	-	-	-	-
EW 15	9.5	5	12/5	-	x	x	-	x	-	-	-	-	-	-	-	-	-
EW 15/2	8	5	-	-	-	-	-	-	-	-	-	-	-	-	-	-	-
EW 35	8.5	5	8/5	-	-	-	-	x	-	-	-	-	-	-	-	-	-
EWK	8.5	5	8/5	-	-	-	-	-	-	-	-	-	-	-	-	-	-
EWK 1	8.5	5	8/5	-	-	-	-	x	-	-	-	-	-	-	-	-	-
EWK 2	8.5	5	8/5	-	-	-	-	-	-	-	-	-	-	-	-	-	-
IAK 1.5N 3L	5	5	10/5 ²⁾	10/5	-	-	-	-	-	-	-	-	x	-	-	-	-
IDK 1.5N	5	5	10/5 ²⁾	10/5	-	x ³⁾	-	-	-	-	-	-	-	-	-	-	-
IDK 1.5NV	5	5	10/5 ²⁾	10/5	-	-	-	-	-	-	-	-	x	-	-	-	-
IDU 1.5 N ...	5	5	10/5 ²⁾	10/5	-	-	-	-	-	-	-	-	x	-	-	-	-
IEK 1.5N...	5	5	10/5 ²⁾	10/5	-	-	-	-	-	-	-	-	x	-	-	-	-
IIK 1.5N...	5	5	10/5 ²⁾	10/5	-	-	-	-	-	-	-	-	x	-	-	-	-
IPE 1.5N...	5	5	10/5 ²⁾	10/5	-	-	-	-	-	-	-	-	x	-	-	-	-
ITR 1.5N...	5	5	10/5 ²⁾	10/5	-	-	-	-	-	-	-	-	x	-	-	-	-
KDKS 1...	8	8	-	-	-	-	-	-	-	-	-	-	-	-	-	-	-
KMVF...	6	5	-	-	-	-	-	-	-	-	-	-	-	-	-	-	-
KSKM...	13	5	-	-	-	-	-	-	-	-	-	-	-	-	-	-	-
KST...	24-34	5	-	-	-	-	-	-	-	-	-	-	-	-	-	-	-
MAK 2.5/VLI 1.5...	6	6	8/5	-	x	x	x	-	-	-	-	-	x	-	-	-	-
NT...	6-12	6	-	-	-	-	-	-	-	-	-	-	-	-	-	-	-
PDK 2.5/4	5	5	12/5	-	-	-	-	-	-	-	-	-	-	-	-	-	-
PDL 4...	5	5	12/5	-	-	-	-	-	-	-	-	-	-	-	-	-	-
PDU 16	12	-	10/12	-	-	-	-	-	-	-	-	-	-	-	-	-	-
PDU 2.5/4...	5	5	12/5	-	-	-	-	-	-	-	-	-	-	-	-	-	-
PDU 6/10...	8	8	10/8	-	-	-	-	-	-	-	-	-	-	-	-	-	-
PEI 16	12	-	10/12	-	-	-	-	-	-	-	-	-	-	-	-	-	-
PNT 16	12	-	10/12	-	-	-	-	-	-	-	-	-	-	-	-	-	-
PNT 2.5/4	5	5	12/5	-	-	-	-	-	-	-	-	-	-	-	-	-	-
PNT 6/10	8	8	10/8	-	-	-	-	-	-	-	-	-	-	-	-	-	-
PPE 16	12	-	10/12	-	-	-	-	-	-	-	-	-	-	-	-	-	-
PPE 2.5/4	5	5	12/5	-	-	-	-	-	-	-	-	-	-	-	-	-	-
PPE 6/10	8	8	10/8	-	-	-	-	-	-	-	-	-	-	-	-	-	-
PTR 2.5/4...	5.1	5/5	10/5	-	-	-	-	-	-	-	-	-	-	-	-	-	-
RSF 1-3...	8	5	-	-	-	-	-	-	-	-	-	-	-	-	-	-	-
SAK 10...	10	5	-	-	-	-	-	-	-	-	-	-	-	-	-	-	-
SAK 16...	12	5	-	-	-	-	-	-	-	-	-	-	-	-	-	-	-
SAK 2.5	6.1	6	-	-	x	-	-	-	-	-	-	-	-	-	-	-	-
SAK 2.5/35	5	5	-	-	x	-	-	-	-	-	-	-	-	-	-	-	-
SAK 35...	18	5	-	-	x	-	-	-	-	-	-	-	-	-	-	-	-
SAK 4...	6.5	6.5	-	-	x	-	-	-	-	-	-	-	-	-	-	-	-
SAK 6...	8	8	-	-	x	-	-	-	-	-	-	-	-	-	-	-	-
SAK 95/35	28	5	-	-	x	-	-	-	-	-	-	-	-	-	-	-	-
SAKA 10	12	5	-	-	x	-	-	-	-	-	-	-	-	-	-	-	-
SAKB 10	10	5	-	-	x	-	-	-	-	-	-	-	-	-	-	-	-
SAKC 10/35	12	6.5	-	-	x	-	-	-	-	-	-	-	-	-	-	-	-
SAKC 4/35	6.5	6.5	-	-	x	-	-	-	-	-	-	-	-	-	-	-	-
SAKD 2.5N	5	5	-	-	x	-	-	-	-	-	-	-	-	-	-	-	-
SAKG...	32-54	5	-	-	x	-	-	-	-	-	-	-	-	-	-	-	-
SAKH 35	18	6.5	-	-	-	-	-	-	-	-	-	-	-	-	-	-	-
SAKH 4-10	6.5-14	5	-	-	x	-	-	-	-	-	-	-	-	-	-	-	-
SAKK 10..	11.5	5	-	-	x	-	-	-	-	-	-	-	-	-	-	-	-
SAKK 4..	8	6.5	-	-	x	-	-	-	-	-	-	-	-	-	-	-	-
SAKR...	6.5	6.5	-	-	x	-	-	-	-	-	-	-	-	-	-	-	-
SAKS....	13-28	5	-	-	x	-	-	-	-	-	-	-	-	-	-	-	-
SAKT...	8	6.5	-	-	x	-	-	-	-	-	-	-	-	-	-	-	-
VWVGK 4...	10	5/5	12/6.5	-	-	-	-	-	-	-	-	-	-	-	-	-	-
VWVGK 6...	10	5/5	12/6.5	-	-	-	-	-	-	-	-	-	-	-	-	-	-
WDK 1.5/R 3.5...	3.5	3.5	-	-	-	-	-	-	-	-	-	-	-	-	-	-	-

1) = WS 10/6 Middle; 2) = WS 10/5 Middle; 3) = SnapMark

Selection table – terminal markers

Terminal markers

B

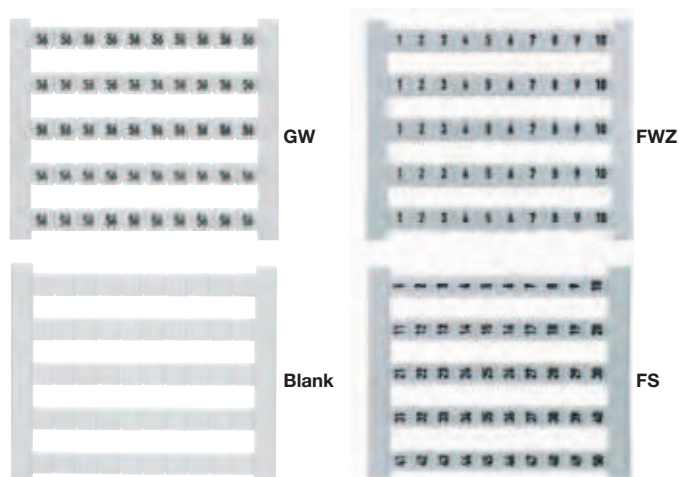
Designation	Terminal width	DEK	WS	ZS	SchT 7	SchT 9/4	SchT 14/6	WTS 3/4	WGB 5 / WAD 5	WGB 8 / WAD 8	WAD 12	WAD 27	ZGB 15 / ZGB 30	BZT 1	BZT 2	EM 8/30	Other
WDK 2.5 ...	5	5	8/5	-	-	x	-	-	-	-	-	-	x	-	-	-	-
WDK 2.5 800V	6	6	8/5	-	-	x	-	-	-	-	-	-	x	-	-	-	-
WDK 2.5/BLA R5.08	5.08	5	8/5	-	-	-	-	x	-	-	-	-	-	-	-	-	-
WDK 2.5/BLZ R5.08	5.08	5	8/5	-	-	-	-	x	-	-	-	-	-	-	-	-	-
WDK 2.5N...	5	5	8/5	-	-	-	-	-	-	-	-	-	-	-	-	-	-
WDK 4N...	5	5	8/5	-	-	-	-	-	-	-	-	-	-	-	-	-	-
WDL 2.5/...	6	6	8/5	-	-	-	-	x	-	-	-	-	x	-	-	-	-
WDT 1.5	6.5	6.5	8/5	-	-	-	-	-	-	-	-	-	-	-	-	-	-
WDTR 2.5...	6.2	6	8/5	-	-	x	-	-	-	-	-	-	-	-	-	-	-
WDU (WPE) 120/150	32	5	10/5	-	-	-	-	x	-	-	-	x	-	-	-	-	-
WDU (WPE) 35 N	16	5	12/5	-	x	x	x	x	-	-	-	-	x	-	-	-	-
WDU (WPE) 70/95	27	5	12/5	-	-	-	-	x	-	-	-	x	-	-	-	-	-
WDU (WPE) 70N	20.5	5	12/5	-	x	x	x	x	-	-	-	-	x	-	-	-	-
WDU 1.5 LD/BLA	5.08	5	12/5	-	x	x	x	x	-	-	-	-	x	-	-	-	-
WDU 1.5/BLA	5.08	5	12/5	-	x	x	x	x	-	-	-	-	x	-	-	-	-
WDU 1.5/BLZ R7.62	7.62	5	-	-	-	-	-	-	-	-	-	-	x	-	-	-	-
WDU 1.5/BLZ/5.08	5.08	5	12/5	-	x	x	x	x	-	-	-	-	x	-	-	-	-
WDU 1.5/BLZ/LD/5.08	5.08	5	12/5	-	x	x	x	x	-	-	-	-	x	-	-	-	-
WDU 1.5/R 3.5...	3.5	3.5	-	-	-	-	-	-	-	-	-	-	-	-	-	-	-
WDU 1.5/R/BLA	5.08	5	12/5	-	x	x	x	x	-	-	-	-	x	-	-	-	-
WDU 1.5/ZZ	5	5	12/5	-	x	x	x	x	-	-	-	-	x	-	-	-	-
WDU 10 SL	10	5	12/5	-	x	x	x	x	x	x	-	-	x	-	-	-	-
WDU 10...	10	5	12/5	-	x	x	x	x	x	x	-	-	x	-	-	-	-
WDU 16 (ZA)	12	5	12/5	-	x	x	x	x	-	-	x	-	x	-	-	-	-
WDU 16 N	12	5	12/5	-	x	x	x	x	-	-	-	-	x	-	-	-	-
WDU 2.5 F	5	5	12/5	-	-	-	-	x	-	-	-	-	-	-	-	-	-
WDU 2.5 FF	5	5	12/5	-	x	-	-	x	-	-	-	-	-	-	-	-	-
WDU 2.5 N (WDU 1.5)	5	5	12/5	-	x	x	x	x	-	-	-	-	x	-	-	-	-
WDU 2.5 TC...	5	5	12/5	-	x	x	-	x	-	-	-	-	x	-	-	-	-
WDU 2.5...	5	5	12/5	-	x	x	x	x	x	-	-	-	x	-	-	-	-
WDU 2.5/1.5/ZZ	5	5	12/5	-	x	x	x	x	-	-	-	-	x	-	-	-	-
WDU 2.5/BLZ R7.62	7.62	5	-	-	-	-	-	-	-	-	-	-	x	-	-	-	-
WDU 240...	36	5	12/5	-	-	-	-	-	-	-	-	-	-	-	-	-	-
WDU 35	16	5	12/5	-	x	x	x	x	-	-	x	-	x	-	-	-	-
WDU 4 ...	6	6	12/6	-	x	x	x	x	x	-	-	-	x	-	-	-	-
WDU 4N ...	6	6	12/6	-	x	x	x	x	-	-	-	-	x	-	-	-	-
WDU 50N	18.5	5	12/5	-	-	-	-	-	-	-	-	-	-	-	-	-	-
WDU 6 ...	8	8	12/8	-	x	x	x	x	x	x	-	-	x	-	-	-	-
WDU 95N	27	8	15/5	-	-	-	-	-	-	-	-	-	-	-	-	-	-
WDUL 4	6	6	12/6	-	x	x	x	x	x	-	-	-	x	-	-	-	-
WEW 32/1	12.2	5	12/5	-	x	x	x	x	-	-	-	x	x	-	-	-	-
WEW 35/1	12.2	5	12/5	-	x	x	x	x	-	-	-	-	-	-	-	-	-
WEW 35/2	8	8	12/5	-	x	x	x	x	x	x	-	-	-	-	-	x	-
WF 10...	35.6	6	15/5	-	-	-	-	-	-	-	-	-	-	-	-	-	-
WF 12...	35.6	6	15/5	-	-	-	-	-	-	-	-	-	-	-	-	-	-
WF 5...	13	6	15/5	-	-	-	-	-	-	-	-	-	-	-	-	-	-
WF 6...	19.6	6	15/5	-	-	-	-	-	-	-	-	-	-	-	-	-	-
WF 8...	24.6	6	15/5	-	-	-	-	-	-	-	-	-	-	-	-	-	-
WFF 120...	42	5	12/6.5	-	-	-	-	-	-	-	-	-	-	-	-	-	-
WFF 185...	55	5	12/6.5	-	-	-	-	-	-	-	-	-	-	-	-	-	-
WFF 300...	55	5	12/6.5	-	-	-	-	-	-	-	-	-	-	-	-	-	-
WFF 35...	27	5	12/5	-	-	-	-	-	-	-	-	-	-	-	-	-	-
WFF 70...	32	5	12/6.5	-	-	-	-	-	-	-	-	-	-	-	-	-	-
WGK 10.../WGKV 10...	10.1	5/5	12/6.5	-	-	-	-	-	-	-	-	-	-	-	-	-	-
WGK 16...	12.1	5/5	12/6.5	-	-	-	-	-	-	-	-	-	-	-	-	-	-
WGK 25.../WGKV 25...	15.1	5/5	12/6.5	-	-	-	-	-	-	-	-	-	-	-	-	-	-
WGK 4.../WGKV 4...	8.1	5/8	10/8	-	-	-	-	-	-	-	-	-	-	-	-	-	-
WGK 50...	18.8	6/5	-	-	-	-	-	-	-	-	-	-	-	-	-	-	-
WGK 95...	25	5/8	-	-	-	-	-	-	-	-	-	-	-	-	-	-	-
WMA 4...	6	6	12/6	-	x	x	x	x	x	-	-	-	x	-	-	-	-
WNT 10	10	5	12/5	-	x	x	x	x	-	-	-	-	x	-	-	-	-
WNT 16 N	12	5	12/5	-	x	x	x	x	-	-	-	-	x	-	-	-	-
WNT 2.5	5	5	12/5	-	x	x	x	x	-	-	-	-	x	-	-	-	-
WNT 35 N	16	5	12/5	-	x	x	x	x	-	-	-	-	x	-	-	-	-
WNT 4	6	6	12/6	-	x	x	x	x	-	-	-	-	x	-	-	-	-
WNT 6	8	8	12/5	-	x	x	x	x	-	-	-	-	x	-	-	-	-
WNT 70 N	20.5	5	12/5	-	x	x	x	x	-	-	-	-	x	-	-	-	-
WPDB...		-	-	-	-	-	-	-	-	-	-	-	-	-	-	-	LM MT3000 15x9 GE
WPE 1.5/R3.5	3.5	3.5	12/3.5	-	-	-	-	-	-	-	-	-	-	-	-	-	-
WPE 1.5/ZZ	5	5	12/5	-	x	x	x	x	-	-	-	-	x	-	-	-	-
WPE 10...	10	5	12/5	-	x	x	x	x	-	-	-	-	x	-	-	-	-
WPE 120	32	8	12/6.5	-	-	-	-	-	-	-	-	-	-	-	-	-	-
WPE 16	12	5	12/5	-	x	x	x	x	-	-	-	-	x	-	-	-	-
WPE 16 N	12	5	12/5	-	x	x	x	x	-	-	-	-	x	-	-	-	-
WPE 2.5 N (WPE 1.5)	5	5	12/5	-	x	x	x	x	-	-	-	-	x	-	-	-	-
WPE 2.5...	5	5	12/5	-	x	x	x	x	-	-	-	-	x	-	-	-	-
WPE 2.5/1.5/ZR	5	5	12/5	-	-	-	-	-	-	-	-	-	-	-	-	-	-
WPE 35...	16	5	12/5	-	x	x	x	x	-	-	-	-	x	-	-	-	-
WPE 4	6	6	12/6	-	x	x	x	x	-	-	-	-	x	-	-	-	-
WPE 4N	6	6	12/6	-	-	-	-	-	-	-	-	-	-	-	-	-	-
WPE 50N	18.5	8	12/6.5	-	-	-	-	-	-	-	-	-	-	-	-	-	-
WPE 6	8	8	12/5	-	x	x	x	x	-	-	-	-	x	-	-	-	-

Designation	Terminal width	DEK	WS	ZS	SchT 7	SchT 9/4	SchT 14/6	WTS 3/4	WGB 5 / WAD 5	WGB 8 / WAD 8	WAD 12	WAD 27	ZGB 15 / ZGB 30	BZT 1	BZT 2	EM 6/30	Other
WPE 95N/120N	27	8	15/5	-	-	-	-	-	-	-	-	-	-	-	-	-	-
WPO 4	6	6	10/6	-	-	-	-	-	-	-	-	-	-	-	-	-	-
WSI 25...	18	-	-	-	-	-	-	-	-	-	-	-	-	-	-	-	ESG 6/15
WSI 6...	8	8	12/5	-	-	-	-	X	-	-	-	-	X	-	-	-	-
WSI 6/2...	12	8	12/6.5	-	-	-	-	-	-	-	-	-	-	-	-	-	-
WTD 6/1	8	8	12/5	-	-	-	-	X	-	-	-	-	-	-	-	-	-
WTL 35	16	-	12/6	-	-	-	-	-	-	-	-	-	X	-	-	-	-
WTL 4 ...	6	6	12/6	-	-	-	-	-	-	-	-	-	-	-	-	-	-
WTL 6/1...	8	8	12/8	-	-	-	-	X	-	-	-	-	X	-	-	-	-
WTL 6/2	8	8	12/8	-	-	-	-	X	-	-	-	-	X	-	-	-	-
WTL 6/3...	8	8	12/8	-	-	-	-	X	-	-	-	-	X	-	-	-	-
WTQ 6/1	8	8	12/8	-	-	-	-	X	-	-	-	-	X	-	-	-	-
WTR 2.5 ...	5	5	12/5	-	-	-	-	X	-	-	-	-	X	-	-	-	-
WTR 35 E	32	-	12/6	-	-	-	-	-	-	-	-	-	-	-	-	-	-
WTR 4...	6	6	12/6	-	-	-	-	-	-	-	-	-	-	-	-	-	-
ZAP/TW ZIA 1.5/...	3.8	3.5	-	-	-	-	-	-	-	-	-	-	-	-	-	-	-
ZDK 1.5...	3.5	3.5	12/3.5	-	-	-	-	-	-	-	-	-	-	-	-	-	-
ZDK 2.5...	5	5	12/5	15/5	-	-	-	X	-	-	-	-	X	-	-	-	-
ZDK 2.5-2...	5	5	10/5	10/5	-	-	-	-	-	-	-	-	-	-	-	-	-
ZDK 2.5N...	5.1	5/5	10/5	-	-	-	-	-	-	-	-	-	-	-	-	-	ZAD 9/4
ZDK 4/S/...	6	6	-	12/6	-	-	-	X	-	-	-	-	X	-	-	-	-
ZDK 6/S/...	8	8	-	-	-	-	-	X	-	-	-	-	X	-	-	-	-
ZDKPE 2.5	5	5	10/5	10/5	-	-	-	-	-	-	-	-	-	-	-	-	-
ZDL 2.5/...	5	5	-	10/5	-	-	-	-	-	-	-	-	X	-	-	-	-
ZDLD 2.5-2...	5	5	-	10/5	-	-	-	-	-	-	-	-	X	-	-	-	-
ZDT 2.5 ...	5	5	10/5	10/5	-	-	-	-	-	-	-	-	-	-	-	-	-
ZDTPE 2.5...	5	5	10/5	10/5	-	-	-	-	-	-	-	-	-	-	-	-	-
ZDTR 2.5	5	5	12/5	15/5	-	-	-	X	-	-	-	-	X	-	-	-	-
ZDU (ZPE) 10	10	5	12/5	15/5	-	X	-	-	-	-	-	-	X	X	X	-	-
ZDU (ZPE) 10/S...	10	5	10/5	15/5	-	X	-	-	-	-	-	-	X	X	X	-	-
ZDU (ZPE) 16...	12	5	12/5	15/5	-	X	-	X	-	-	-	-	X	X	X	-	-
ZDU (ZPE) 16/S...	12	5	10/5	15/5	-	X	-	-	-	-	-	-	X	X	X	-	-
ZDU (ZPE) 2.5 ...	5	5	12/5	15/5	-	-	-	X	-	-	-	-	X	X	X	-	-
ZDU (ZPE) 2.5-2/...	5	5	12/5	15/5	-	-	-	X	-	-	-	-	X	-	-	-	-
ZDU (ZPE) 2.5N...	5.1	5/5	10/5	-	-	-	-	-	-	-	-	-	-	-	-	-	ZAD 9/4
ZDU (ZPE) 35...	16	5	12/5	15/5	-	-	-	X	-	-	-	-	X	X	X	-	-
ZDU (ZPE) 4...	6	6	12/6	12/6	-	-	-	X	-	-	-	-	X	X	X	-	-
ZDU (ZPE) 4-2...	6	6	12/6	12/6	-	-	-	-	-	-	-	-	-	-	-	-	-
ZDU (ZPE) 6...	8	8	12/8	15/5	-	-	-	X	-	-	-	-	X	X	X	-	-
ZDU (ZPE) 6-2...	8	8	12/8	12/6	-	-	-	-	-	-	-	-	-	-	-	-	-
ZDU 1.5...	3.5	3.5	12/3.5	-	-	-	-	-	-	-	-	-	-	X	X	-	-
ZDUA (ZPEA) 2.5-2	5	5	8/5	15/5	-	-	-	X	-	-	-	-	X	-	-	-	-
ZDUA 2.5-2N	5	5	10/5	10/5	-	-	-	-	-	-	-	-	-	-	-	-	-
ZDUB (ZPEB) 2.5-2/...	5	5	8/5	15/5	-	-	-	-	-	-	-	-	X	-	-	-	-
ZEI 16	16	5	12/5	15/5	-	-	-	X	-	-	-	-	X	-	-	-	-
ZEI 6	10	8	12/6	12/6	-	-	-	X	-	-	-	-	X	X	X	-	-
ZEW 35/2	8	8	-	-	-	-	-	-	-	-	-	-	-	-	-	X	-
ZIA 1.5 ...	5.08	5	8/5	15/5	-	-	-	X	-	-	-	-	X	-	-	-	-
ZMAK 2.5	5	5	10/5	15/5	-	-	-	-	-	-	-	-	X	-	-	-	-
ZNT 10/S	10	5	-	-	-	-	-	-	-	-	-	-	-	-	-	-	-
ZNT 16/S	12	5	-	-	-	-	-	-	-	-	-	-	-	-	-	-	-
ZNT 2.5/S	5	5	10/5	10/5	-	-	-	-	-	-	-	-	-	-	-	-	-
ZNT 4/S	6	6	10/6	12/6	-	-	-	-	-	-	-	-	-	-	-	-	-
ZNT 6/S	8	8	10/6	12/6	-	-	-	-	-	-	-	-	-	-	-	-	-
ZP 2.5...	5.1	5/5	10/5	10/5	-	-	-	-	-	-	-	-	-	-	-	-	-
ZPE 16-2/1 AN	12	8	12/6	12/6	-	-	-	-	-	-	-	-	-	-	-	-	-
ZPV 1.5	5.08	5	12/5	15/5	-	X	X	X	-	-	-	-	X	-	-	-	-
ZRV 1.5...	5	5	8/5	10/5	-	X	X	X	-	-	-	-	X	-	-	-	-
ZSI 2.5...	8	8	12/5	15/5	-	-	-	X	-	-	-	-	X	-	-	-	-
ZSI 2.5/2...	12	5	12/5	15/5	-	-	-	X	-	-	-	-	X	-	-	-	-
ZSI 6-2/FC	8	6	12/6	12/6	-	-	-	-	-	-	-	-	-	-	-	-	-
ZT 2.5 ...	5	5	10/5	10/5	-	-	-	-	-	-	-	-	-	-	-	-	-
ZTD 6	8	8	12/6.5	-	-	-	-	-	-	-	-	-	-	-	-	-	-
ZTL 6	8	8	12/6.5	-	-	-	-	-	-	-	-	-	-	-	-	-	-
ZTPE 2.5 ...	5	5	10/5	10/5	-	-	-	-	-	-	-	-	-	-	-	-	-
ZTR 2.5...	5	5	12/5	15/5	-	-	-	X	-	-	-	-	X	-	-	-	-
ZTR 2.5-2...	5	5	14/5	10/5	-	-	-	-	-	-	-	-	-	-	-	-	-

DEK card with printing

The Dekafix marker is the universal marker for terminals and plug-in connectors as well as electronic modules from the Weidmüller product range. Dekafix provides you with a wide range of standard printing options. The system is particularly suitable for short sequences of numbers and is also available with customer specific printing.

- In strips for fast installation
- Large selection of ready-to-use printed markers
- Excellent printing quality thanks to the MC Laser
- Available in 4 widths
- Custom printing also possible



Technical data

Material	Polyamide 66, halogen-free
UL 94 flammability rating	V2
Temperature range	-40 °C to 100 °C
Printing	black

Ordering data

Colour	Available in all colours of the international colour code; for MC on request		
	● brown	● red	● orange
	● yellow	● green	● blue
	● violet	● grey	○ white

Qty	500 pcs
-----	---------

Pitch	DEK 5 = 5 mm : DEK 6 = 6 mm : DEK 6.5 = 6.5 mm : DEK 8 = 8 mm
-------	--

Printing variations	FW = consecutive horizontal	e.g. DEK 5 FW 1-50
	FS = consecutive vertical	e.g. DEK 5 FS 51-100
	FWZ = consecutive horizontal line	e.g. DEK 5 FWZ 1-10
	FSZ = consecutive vertical line	e.g. DEK 5 FSZ 21-30
	GW = identical horizontal	e.g. DEK 5 GW A
	GS = identical vertical	e.g. DEK 5 GS B

No. of characters	horizontal	vertical
DEK 5	max. 3 characters	max. 3 characters
DEK 6	max. 3 characters	max. 3 characters
DEK 6.5	max. 4 characters	max. 3 characters
DEK 8	max. 5 characters	max. 3 characters

Specify colour and characters for special printing

Versions DEK

Type/Print	Order No.	Type/Print	Order No.	Type/Print	Order No.	Type/Print	Order No.
DEK 5 BL NEUTRAL	0473391693	DEK 5 FWZ 51-60	0523060051	DEK 5 GW 46	0522660046	DEK 5 GW 132	0522660132
DEK 5 BR NEUTRAL	0473391692	DEK 5 FWZ 61-70	0523060061	DEK 5 GW 47	0522660047	DEK 5 GW 133	0522660133
DEK 5 FS 1-50	0473560001	DEK 5 FWZ 71-80	0523060071	DEK 5 GW 48	0522660048	DEK 5 GW 134	0522660134
DEK 5 FS 101-150	0473560101	DEK 5 FWZ 81-90	0523060081	DEK 5 GW 49	0522660049	DEK 5 GW 135	0522660135
DEK 5 FS 151-200	0473560151	DEK 5 FWZ 91-100	0523060091	DEK 5 GW 50	0522660050	DEK 5 GW 136	0522660136
DEK 5 FS 201-250	0473560201	DEK 5 FWZ L1-EIK	0354361203	DEK 5 GW 51	0522660051	DEK 5 GW 137	0522660137
DEK 5 FS 251-300	0473560251	DEK 5 FWZ L1-PE	0354361187	DEK 5 GW 52	0522660052	DEK 5 GW 138	0522660138
DEK 5 FS 301-350	0473560301	DEK 5 FWZ U,V,W,N,PE	0558360000	DEK 5 GW 53	0522660053	DEK 5 GW 139	0522660139
DEK 5 FS 351-400	0473560351	DEK 5 GE NEUTRAL	0473391687	DEK 5 GW 54	0522660054	DEK 5 GW 140	0522660140
DEK 5 FS 401-450	0473560401	DEK 5 GN NEUTRAL	0473391688	DEK 5 GW 55	0522660055	DEK 5 GW 141	0522660141
DEK 5 FS 451-500	0473560451	DEK 5 GR NEUTRAL	0473391691	DEK 5 GW 56	0522660056	DEK 5 GW 142	0522660142
DEK 5 FS 501-550	0473560501	DEK 5 GS A	0132961021	DEK 5 GW 57	0522660057	DEK 5 GW 143	0522660143
DEK 5 FS 51-100	0473560051	DEK 5 GS B	0132961022	DEK 5 GW 58	0522660058	DEK 5 GW 144	0522660144
DEK 5 FS 551-600	0473560551	DEK 5 GS C	0132961023	DEK 5 GW 59	0522660059	DEK 5 GW 145	0522660145
DEK 5 FS 601-650	0473560601	DEK 5 GS D	0132961024	DEK 5 GW 60	0522660060	DEK 5 GW 146	0522660146
DEK 5 FS 651-700	0473560651	DEK 5 GS E	0132961025	DEK 5 GW 61	0522660061	DEK 5 GW 147	0522660147
DEK 5 FS 701-750	0473560701	DEK 5 GS F	0132961026	DEK 5 GW 62	0522660062	DEK 5 GW 148	0522660148
DEK 5 FS 751-800	0473560751	DEK 5 GS G	0132961027	DEK 5 GW 63	0522660063	DEK 5 GW 149	0522660149
DEK 5 FS 801-850	0473560801	DEK 5 GS H	0132961028	DEK 5 GW 64	0522660064	DEK 5 GW 150	0522660150
DEK 5 FS 851-900	0473560851	DEK 5 GS I	0132961029	DEK 5 GW 65	0522660065	DEK 5 GW 151	0522660151
DEK 5 FS 901-950	0473560901	DEK 5 GS J	0132961030	DEK 5 GW 66	0522660066	DEK 5 GW 152	0522660152
DEK 5 FS 951-999	0473560951	DEK 5 GS K	0132961031	DEK 5 GW 67	0522660067	DEK 5 GW 153	0522660153
DEK 5 FSZ 1-10	0460660001	DEK 5 GS L	0132961032	DEK 5 GW 68	0522660068	DEK 5 GW 154	0522660154
DEK 5 FSZ 11-20	0460660011	DEK 5 GS M	0132961033	DEK 5 GW 69	0522660069	DEK 5 GW 155	0522660155
DEK 5 FSZ 21-30	0460660021	DEK 5 GS N	0132961034	DEK 5 GW 70	0522660070	DEK 5 GW 156	0522660156
DEK 5 FSZ 31-40	0460660031	DEK 5 GS O	0132961035	DEK 5 GW 71	0522660071	DEK 5 GW 157	0522660157
DEK 5 FSZ 41-50	0460660041	DEK 5 GS P	0132961036	DEK 5 GW 72	0522660072	DEK 5 GW 158	0522660158
DEK 5 FSZ 51-60	0460660051	DEK 5 GS PE	0157261187	DEK 5 GW 73	0522660073	DEK 5 GW 159	0522660159
DEK 5 FSZ 61-70	0460660061	DEK 5 GS Q	0132961037	DEK 5 GW 74	0522660074	DEK 5 GW 160	0522660160
DEK 5 FSZ 71-80	0460660071	DEK 5 GS R	0132961038	DEK 5 GW 75	0522660075	DEK 5 GW 161	0522660161
DEK 5 FSZ 81-90	0460660081	DEK 5 GS S	0132961039	DEK 5 GW 76	0522660076	DEK 5 GW 162	0522660162
DEK 5 FSZ 91-100	0460660091	DEK 5 GS T	0132961040	DEK 5 GW 77	0522660077	DEK 5 GW 163	0522660163
DEK 5 FW 1,3,5,...99	1358460000	DEK 5 GS U	0132961041	DEK 5 GW 78	0522660078	DEK 5 GW 164	0522660164
DEK 5 FW 1-50	0473460001	DEK 5 GS V	0132961042	DEK 5 GW 79	0522660079	DEK 5 GW 165	0522660165
DEK 5 FW 10-500	0132660010	DEK 5 GS W	0132961043	DEK 5 GW 80	0522660080	DEK 5 GW 166	0522660166
DEK 5 FW 101-150	0473460101	DEK 5 GS X	0132961044	DEK 5 GW 81	0522660081	DEK 5 GW 167	0522660167
DEK 5 FW 151-200	0473460151	DEK 5 GS Y	0132961045	DEK 5 GW 82	0522660082	DEK 5 GW 168	0522660168
DEK 5 FW 2,4,...100	1358560000	DEK 5 GS Z	0132961046	DEK 5 GW 83	0522660083	DEK 5 GW 169	0522660169
DEK 5 FW 201-250	0473460201	DEK 5 GS ⊥	0157261202	DEK 5 GW 84	0522660084	DEK 5 GW 170	0522660170
DEK 5 FW 251-300	0473460251	DEK 5 GS ⊕	0157261203	DEK 5 GW 85	0522660085	DEK 5 GW 171	0522660171
DEK 5 FW 301-350	0473460301	DEK 5 GW	0576260000	DEK 5 GW 86	0522660086	DEK 5 GW 172	0522660172
DEK 5 FW 351-400	0473460351	DEK 5 GW 1	0522660001	DEK 5 GW 87	0522660087	DEK 5 GW 173	0522660173
DEK 5 FW 401-450	0473460401	DEK 5 GW 2	0522660002	DEK 5 GW 88	0522660088	DEK 5 GW 174	0522660174
DEK 5 FW 451-500	0473460451	DEK 5 GW 3	0522660003	DEK 5 GW 89	0522660089	DEK 5 GW 175	0522660175
DEK 5 FW 501-550	0473460501	DEK 5 GW 4	0522660004	DEK 5 GW 90	0522660090	DEK 5 GW 176	0522660176
DEK 5 FW 51-100	0473460051	DEK 5 GW 5	0522660005	DEK 5 GW 91	0522660091	DEK 5 GW 177	0522660177
DEK 5 FW 551-600	0473460551	DEK 5 GW 6	0522660006	DEK 5 GW 92	0522660092	DEK 5 GW 178	0522660178
DEK 5 FW 601-650	0473460601	DEK 5 GW 7	0522660007	DEK 5 GW 93	0522660093	DEK 5 GW 179	0522660179
DEK 5 FW 651-700	0473460651	DEK 5 GW 8	0522660008	DEK 5 GW 94	0522660094	DEK 5 GW 180	0522660180
DEK 5 FW 701-750	0473460701	DEK 5 GW 9	0522660009	DEK 5 GW 95	0522660095	DEK 5 GW 181	0522660181
DEK 5 FW 751-800	0473460751	DEK 5 GW 10	0522660010	DEK 5 GW 96	0522660096	DEK 5 GW 182	0522660182
DEK 5 FW 801-850	0473460801	DEK 5 GW 11	0522660011	DEK 5 GW 97	0522660097	DEK 5 GW 183	0522660183
DEK 5 FW 851-900	0473460851	DEK 5 GW 12	0522660012	DEK 5 GW 98	0522660098	DEK 5 GW 184	0522660184
DEK 5 FW 901-950	0473460901	DEK 5 GW 13	0522660013	DEK 5 GW 99	0522660099	DEK 5 GW 185	0522660185
DEK 5 FW 951-999	0473460951	DEK 5 GW 14	0522660014	DEK 5 GW 100	0522660100	DEK 5 GW 186	0522660186
DEK 5 FW U1-PE1	0133161114	DEK 5 GW 15	0522660015	DEK 5 GW 101	0522660101	DEK 5 GW 187	0522660187
DEK 5 FW U2-PE2	0133161115	DEK 5 GW 16	0522660016	DEK 5 GW 102	0522660102	DEK 5 GW 188	0522660188
DEK 5 FW U3-PE3	0133161116	DEK 5 GW 17	0522660017	DEK 5 GW 103	0522660103	DEK 5 GW 189	0522660189
DEK 5 FW U4-PE4	0133161117	DEK 5 GW 18	0522660018	DEK 5 GW 104	0522660104	DEK 5 GW 190	0522660190
DEK 5 FW U5-PE5	0133161118	DEK 5 GW 19	0522660019	DEK 5 GW 105	0522660105	DEK 5 GW 191	0522660191
DEK 5 FW U6-PE6	0133161119	DEK 5 GW 20	0522660020	DEK 5 GW 106	0522660106	DEK 5 GW 192	0522660192
DEK 5 FW U7-PE7	0133161120	DEK 5 GW 21	0522660021	DEK 5 GW 107	0522660107	DEK 5 GW 193	0522660193
DEK 5 FW U8-PE8	0133161121	DEK 5 GW 22	0522660022	DEK 5 GW 108	0522660108	DEK 5 GW 194	0522660194
DEK 5 FW U9-PE9	0133161122	DEK 5 GW 23	0522660023	DEK 5 GW 109	0522660109	DEK 5 GW 195	0522660195
DEK 5 FW X1-Z1	0133261150	DEK 5 GW 24	0522660024	DEK 5 GW 110	0522660110	DEK 5 GW 196	0522660196
DEK 5 FW X10-Z10	0133261159	DEK 5 GW 25	0522660025	DEK 5 GW 111	0522660111	DEK 5 GW 197	0522660197
DEK 5 FW X2-Z2	0133261151	DEK 5 GW 26	0522660026	DEK 5 GW 112	0522660112	DEK 5 GW 198	0522660198
DEK 5 FW X3-Z3	0133261152	DEK 5 GW 27	0522660027	DEK 5 GW 113	0522660113	DEK 5 GW 199	0522660199
DEK 5 FW X4-Z4	0133261153	DEK 5 GW 28	0522660028	DEK 5 GW 114	0522660114	DEK 5 GW 200	0522660200
DEK 5 FW X5-Z5	0133261154	DEK 5 GW 29	0522660029	DEK 5 GW 115	0522660115	DEK 5 GW A	0522761021
DEK 5 FW X6-Z6	0133261155	DEK 5 GW 30	0522660030	DEK 5 GW 116	0522660116	DEK 5 GW B	0522761022
DEK 5 FW X7-Z7	0133261156	DEK 5 GW 31	0522660031	DEK 5 GW 117	0522660117	DEK 5 GW BL/SW -	0576291741
DEK 5 FW X8-Z8	0133261157	DEK 5 GW 32	0522660032	DEK 5 GW 118	0522660118	DEK 5 GW C	0522761023
DEK 5 FW X9-Z9	0133261158	DEK 5 GW 33	0522660033	DEK 5 GW 119	0522660119	DEK 5 GW D	0522761024
DEK 5 FWZ 1-10	0523060001	DEK 5 GW 34	0522660034	DEK 5 GW 120	0522660120	DEK 5 GW E	0522761025
DEK 5 FWZ 1-19	0235860000	DEK 5 GW 35	0522660035	DEK 5 GW 121	0522660121	DEK 5 GW F	0522761026
DEK 5 FWZ 1-99	1572000000	DEK 5 GW 36	0522660036	DEK 5 GW 122	0522660122	DEK 5 GW G	0522761027
DEK 5 FWZ 11-20	0523060011	DEK 5 GW 37	0522660037	DEK 5 GW 123	0522660123	DEK 5 GW H	0522761028
DEK 5 FWZ 2-20	0236160000	DEK 5 GW 38	0522660038	DEK 5 GW 124	0522660124	DEK 5 GW I	0522761029
DEK 5 FWZ 21-30	0523060021	DEK 5 GW 39	0522660039	DEK 5 GW 125	0522660125	DEK 5 GW J	0522761030
DEK 5 FWZ 21-39	0235960000	DEK 5 GW 40	0522660040	DEK 5 GW 126	0522660126	DEK 5 GW K	0522761031
DEK 5 FWZ 22-40	0236260000	DEK 5 GW 41	0522660041	DEK 5 GW 127	0522660127	DEK 5 GW L	0522761032
DEK 5 FWZ 31-40	0523060031	DEK 5 GW 42	0522660042	DEK 5 GW 128	0522660128	DEK 5 GW L1	0522361075
DEK 5 FWZ 41-50	0523060041	DEK 5 GW 43	0522660043	DEK 5 GW 129	0522660129	DEK 5 GW L2	0522361076
DEK 5 FWZ 41-59	0236060000	DEK 5 GW 44	0522660044	DEK 5 GW 130	0522660130	DEK 5 GW L3	0522361077
DEK 5 FWZ 42-60	0236360000	DEK 5 GW 45	0522660045	DEK 5 GW 131	0522660131	DEK 5 GW M	0522761033

Varianten DEK

Type/Print	Order No.
DEK 5 GW MP	0537261235
DEK 5 GW N	0522761034
DEK 5 GW O	0522761035
DEK 5 GW P	0522761036
DEK 5 GW PE	0537261187
DEK 5 GW PEN	0537261188
DEK 5 GW Q	0522761037
DEK 5 GW R	0522761038
DEK 5 GW RT/SW +	0576291737
DEK 5 GW S	0522761039
DEK 5 GW T	0522761040
DEK 5 GW U	0522761041
DEK 5 GW V	0522761042
DEK 5 GW W	0522761043
DEK 5 GW W-STROM	0576261215
DEK 5 GW X	0522761044
DEK 5 GW Y	0522761045
DEK 5 GW Z	0522761046
DEK 5 GW +	0576261198
DEK 5 GW -	0576261199
DEK 5 GW ⊥	0576261202
DEK 5 GW ⊕	0576261203
DEK 5 NEUTRAL	0473360000
DEK 5 OR NEUTRAL	0473391690
DEK 5 RT NEUTRAL	0473391686
DEK 5 SW NEUTRAL	0473391694
DEK 5 VI NEUTRAL	0473391689
DEK 5/3,5 MC FS 1-10	1762320001
DEK 5/3,5 MC FS 101-110	1762320101
DEK 5/3,5 MC FS 11-20	1762320011
DEK 5/3,5 MC FS 111-120	1762320111
DEK 5/3,5 MC FS 121-130	1762320121
DEK 5/3,5 MC FS 131-140	1762320131
DEK 5/3,5 MC FS 141-150	1762320141
DEK 5/3,5 MC FS 21-30	1762320021
DEK 5/3,5 MC FS 31-40	1762320031
DEK 5/3,5 MC FS 41-50	1762320041
DEK 5/3,5 MC FS 51-60	1762320051
DEK 5/3,5 MC FS 61-70	1762320061
DEK 5/3,5 MC FS 71-80	1762320071
DEK 5/3,5 MC FS 81-90	1762320081
DEK 5/3,5 MC FS 91-100	1762320091
DEK 5/3,5 MC GW 0	1755281000
DEK 5/3,5 MC GW 1	1755280001
DEK 5/3,5 MC GW 2	1755280002
DEK 5/3,5 MC GW 3	1755280003
DEK 5/3,5 MC GW 4	1755280004
DEK 5/3,5 MC GW 5	1755280005
DEK 5/3,5 MC GW 6	1755280006
DEK 5/3,5 MC GW 7	1755280007
DEK 5/3,5 MC GW 8	1755280008
DEK 5/3,5 MC GW 9	1755280009
DEK 6 BL NEUTRAL	0468591693
DEK 6 BR NEUTRAL	0468591692
DEK 6 FS 1-50	0468760001
DEK 6 FS 101-150	0468760101
DEK 6 FS 151-200	0468760151
DEK 6 FS 201-250	0468760201
DEK 6 FS 251-300	0468760251
DEK 6 FS 301-350	0468760301
DEK 6 FS 351-400	0468760351
DEK 6 FS 401-450	0468760401
DEK 6 FS 451-500	0468760451
DEK 6 FS 501-550	0468760501
DEK 6 FS 51-100	0468760051
DEK 6 FS 551-600	0468760551
DEK 6 FS 601-650	0468760601
DEK 6 FS 651-700	0468760651
DEK 6 FS 701-750	0468760701
DEK 6 FS 751-800	0468760751
DEK 6 FS 801-850	0468760801
DEK 6 FS 851-900	0468760851
DEK 6 FS 901-950	0468760901
DEK 6 FS 951-999	0468760951
DEK 6 FSZ 1-10	0133360001
DEK 6 FSZ 11-20	0133360011
DEK 6 FSZ 21-30	0133360021
DEK 6 FSZ 31-40	0133360031
DEK 6 FSZ 41-50	0133360041
DEK 6 FSZ 51-60	0133360051
DEK 6 FSZ 61-70	0133360061
DEK 6 FSZ 71-80	0133360071
DEK 6 FSZ 81-90	0133360081
DEK 6 FSZ 91-100	0133360091

Type/Print	Order No.
DEK 6 FW 1,3,5...99	1358660000
DEK 6 FW 1-5 (10X)	0688660000
DEK 6 FW 1-50	0468660001
DEK 6 FW 101-150	0468660101
DEK 6 FW 151-200	0468660151
DEK 6 FW 2,4,...100	1358760000
DEK 6 FW 201-250	0468660201
DEK 6 FW 251-300	0468660251
DEK 6 FW 301-350	0468660301
DEK 6 FW 351-400	0468660351
DEK 6 FW 401-450	0468660401
DEK 6 FW 451-500	0468660451
DEK 6 FW 501-550	0468660501
DEK 6 FW 51-100	0468660051
DEK 6 FW 551-600	0468660551
DEK 6 FW 601-650	0468660601
DEK 6 FW 651-700	0468660651
DEK 6 FW 701-750	0468660701
DEK 6 FW 751-800	0468660751
DEK 6 FW 801-850	0468660801
DEK 6 FW 851-900	0468660851
DEK 6 FW 901-950	0468660901
DEK 6 FW 951-999	0468660951
DEK 6 FW L,N,PE	0632560000
DEK 6 FWZ 1-10	0518960001
DEK 6 FWZ 101-110	0518960101
DEK 6 FWZ 11-20	0518960011
DEK 6 FWZ 111-120	0518960111
DEK 6 FWZ 121-130	0518960121
DEK 6 FWZ 131-140	0518960131
DEK 6 FWZ 141-150	0518960141
DEK 6 FWZ 151-160	0518960151
DEK 6 FWZ 161-170	0518960161
DEK 6 FWZ 171-180	0518960171
DEK 6 FWZ 181-190	0518960181
DEK 6 FWZ 191-200	0518960191
DEK 6 FWZ 201-210	0518960201
DEK 6 FWZ 21-30	0518960021
DEK 6 FWZ 31-40	0518960031
DEK 6 FWZ 41-50	0518960041
DEK 6 FWZ 51-60	0518960051
DEK 6 FWZ 61-70	0518960061
DEK 6 FWZ 71-80	0518960071
DEK 6 FWZ 81-90	0518960081
DEK 6 FWZ 91-100	0518960091
DEK 6 FWZ L1-⊕	0631961203
DEK 6 FWZ L1-⊥	0631961187
DEK 6 FWZ R,S,T,N, ⊥	0631860000
DEK 6 GE NEUTRAL	0468591687
DEK 6 GN NEUTRAL	0468591688
DEK 6 GR NEUTRAL	0468591691
DEK 6 GW 0	0526960100
DEK 6 GW 1	0526960001
DEK 6 GW 2	0526960002
DEK 6 GW 3	0526960003
DEK 6 GW 4	0526960004
DEK 6 GW 5	0526960005
DEK 6 GW 6	0526960006
DEK 6 GW 7	0526960007
DEK 6 GW 8	0526960008
DEK 6 GW 9	0526960009
DEK 6 GW 10	0526960010
DEK 6 GW 11	0526960011
DEK 6 GW 12	0526960012
DEK 6 GW 13	0526960013
DEK 6 GW 14	0526960014
DEK 6 GW 15	0526960015
DEK 6 GW 16	0526960016
DEK 6 GW 17	0526960017
DEK 6 GW 18	0526960018
DEK 6 GW 19	0526960019
DEK 6 GW 20	0526960020
DEK 6 GW 21	0526960021
DEK 6 GW 22	0526960022
DEK 6 GW 23	0526960023
DEK 6 GW 24	0526960024
DEK 6 GW 25	0526960025
DEK 6 GW 26	0526960026
DEK 6 GW 27	0526960027
DEK 6 GW 28	0526960028
DEK 6 GW 29	0526960029
DEK 6 GW 30	0526960030
DEK 6 GW 31	0526960031
DEK 6 GW 32	0526960032
DEK 6 GW 33	0526960033
DEK 6 GW 34	0526960034

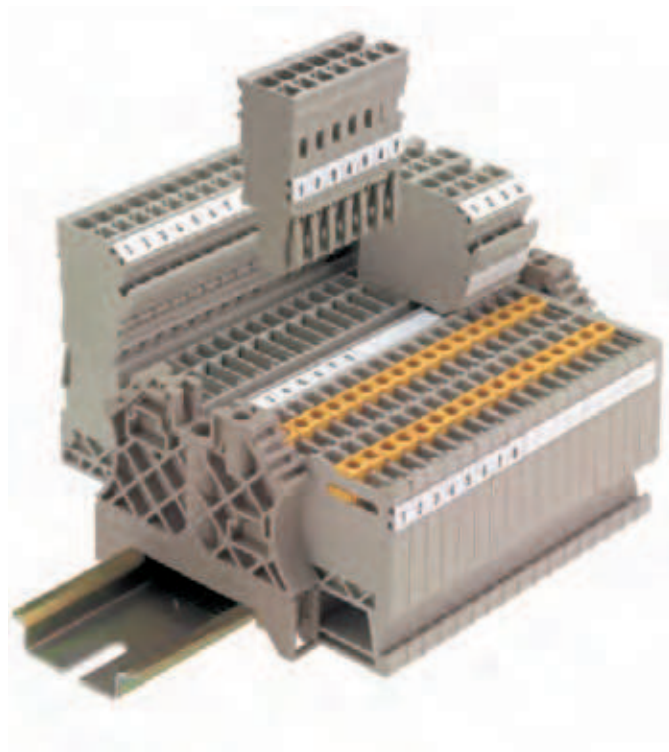
Type/Print	Order No.
DEK 6 GW 35	0526960035
DEK 6 GW 36	0526960036
DEK 6 GW 37	0526960037
DEK 6 GW 38	0526960038
DEK 6 GW 39	0526960039
DEK 6 GW 40	0526960040
DEK 6 GW 41	0526960041
DEK 6 GW 42	0526960042
DEK 6 GW 43	0526960043
DEK 6 GW 44	0526960044
DEK 6 GW 45	0526960045
DEK 6 GW 46	0526960046
DEK 6 GW 47	0526960047
DEK 6 GW 48	0526960048
DEK 6 GW 49	0526960049
DEK 6 GW 50	0526960050
DEK 6 GW 51	0526960051
DEK 6 GW 52	0526960052
DEK 6 GW 53	0526960053
DEK 6 GW 54	0526960054
DEK 6 GW 55	0526960055
DEK 6 GW 56	0526960056
DEK 6 GW 57	0526960057
DEK 6 GW 58	0526960058
DEK 6 GW 59	0526960059
DEK 6 GW 60	0526960060
DEK 6 GW 61	0526960061
DEK 6 GW 62	0526960062
DEK 6 GW 63	0526960063
DEK 6 GW 64	0526960064
DEK 6 GW 65	0526960065
DEK 6 GW 66	0526960066
DEK 6 GW 67	0526960067
DEK 6 GW 68	0526960068
DEK 6 GW 69	0526960069
DEK 6 GW 70	0526960070
DEK 6 GW 71	0526960071
DEK 6 GW 72	0526960072
DEK 6 GW 73	0526960073
DEK 6 GW 74	0526960074
DEK 6 GW 75	0526960075
DEK 6 GW 76	0526960076
DEK 6 GW 77	0526960077
DEK 6 GW 78	0526960078
DEK 6 GW 79	0526960079
DEK 6 GW 80	0526960080
DEK 6 GW 81	0526960081
DEK 6 GW 82	0526960082
DEK 6 GW 83	0526960083
DEK 6 GW 84	0526960084
DEK 6 GW 85	0526960085
DEK 6 GW 86	0526960086
DEK 6 GW 87	0526960087
DEK 6 GW 88	0526960088
DEK 6 GW 89	0526960089
DEK 6 GW 90	0526960090
DEK 6 GW 91	0526960091
DEK 6 GW 92	0526960092
DEK 6 GW 93	0526960093
DEK 6 GW 94	0526960094
DEK 6 GW 95	0526960095
DEK 6 GW 96	0526960096
DEK 6 GW 97	0526960097
DEK 6 GW 98	0526960098
DEK 6 GW 99	0526960099
DEK 6 GW 100	0526960100
DEK 6 GW BL/SW -	1318091741
DEK 6 GW PE	1318061187
DEK 6 GW RT/SW +	1318091737
DEK 6 GW +	1318061198
DEK 6 GW -	1318061199
DEK 6 GW ⊥	1318061202
DEK 6 GW ⊕	1318061203
DEK 6 NEUTRAL	0468560000
DEK 6 OR NEUTRAL	0468591690
DEK 6 RT NEUTRAL	0468591686
DEK 6 SW NEUTRAL	0468591694
DEK 6 VI NEUTRAL	0468591689
DEK 6,5 BL NEUTRAL	0468091693
DEK 6,5 FS 1-50	0468260001
DEK 6,5 FS 101-150	0468260101
DEK 6,5 FS 151-200	0468260201
DEK 6,5 FS 201-250	0468260301
DEK 6,5 FSZ 1-10	0407360001
DEK 6,5 FSZ 11-20	0407360011
DEK 6,5 FSZ 21-30	0407360021

Type/Print	Order No.
DEK 6,5 FSZ 31-40	0407360031
DEK 6,5 FSZ 41-50	0407360041
DEK 6,5 FSZ 51-60	0407360051
DEK 6,5 FSZ 61-70	0407360061
DEK 6,5 FSZ 71-80	0407360071
DEK 6,5 FSZ 81-90	0407360081
DEK 6,5 FSZ 91-100	0407360091
DEK 6,5 FW 1-50	0468160001
DEK 6,5 FW 101-150	0468160101
DEK 6,5 FW 151-200	0468160151
DEK 6,5 FW 201-250	0468160201
DEK 6,5 FW 251-300	0468160251
DEK 6,5 FW 301-350	0468160301
DEK 6,5 FW 351-400	0468160351
DEK 6,5 FW 401-450	0468160401
DEK 6,5 FW 451-500	0468160451
DEK 6,5 FW 501-550	0468160501
DEK 6,5 FW 51-100	0468160051
DEK 6,5 FW L1- h	0632161203
DEK 6,5 FW L1-PE	0632161187
DEK 6,5 FWZ 1-10	0519060001
DEK 6,5 FWZ 11-20	0519060011
DEK 6,5 FWZ 21-30	0519060021
DEK 6,5 FWZ 31-40	0519060031
DEK 6,5 FWZ 41-50	0519060041
DEK 6,5 FWZ 51-60	0519060051
DEK 6,5 FWZ 61-70	0519060061
DEK 6,5 FWZ 71-80	0519060071
DEK 6,5 FWZ 81-90	0519060081
DEK 6,5 FWZ 91-100	0519060091
DEK 6,5 GE NEUTRAL	0468091687
DEK 6,5 GN NEUTRAL	0468091688
DEK 6,5 NEUTRAL	0468060000
DEK 6,5 OR NEUTRAL	0468091690
DEK 6,5 RT NEUTRAL	0468091686
DEK 6,5 SW NEUTRAL	0468091694
DEK 6,5 VI NEUTRAL	0468091689
DEK 8 BEDR./FARBIG	1289690000
DEK 8 FS 1-50 TAMPOPR.	1653350001
DEK 8 FS 51-100 TAMPOPR.	1653350051
DEK 8 FSZ 1-10	1289660001
DEK 8 FSZ 11-20	1289660011
DEK 8 FSZ 21-30	1289660021
DEK 8 FSZ 31-40	1289660031
DEK 8 FSZ 41-50	1289660041
DEK 8 FSZ 51-60	1289660051
DEK 8 FSZ 61-70	1289660061
DEK 8 FSZ 71-80	1289660071
DEK 8 FSZ 81-90	1289660081
DEK 8 FSZ 91-100	1289660091
DEK 8 FW 1-50 TAMPOPR.	1653340001
DEK 8 FW 51-100 TAMPOPR.	1653340051
DEK 8 FWZ 1-10	1276960001
DEK 8 FWZ 101-110	1276960101
DEK 8 FWZ 11-20	1276960011
DEK 8 FWZ 111-120	1276960111
DEK 8 FWZ 121-130	1276960121
DEK 8 FWZ 131-140	1276960131
DEK 8 FWZ 141-150	1276960141
DEK 8 FWZ 21-30	1276960021
DEK 8 FWZ 31-40	1276960031
DEK 8 FWZ 41-50	1276960041
DEK 8 FWZ 51-60	1276960051
DEK 8 FWZ 61-70	1276960061
DEK 8 FWZ 71-80	1276960071
DEK 8 FWZ 81-90	1276960081
DEK 8 FWZ 91-100	1276960091
DEK 8 GE NEUTRAL	1277091687
DEK 8 GN NEUTRAL	1277091688
DEK 8 NEUTRAL	1277060000
DEK 8 OR NEUTRAL	1277091690
DEK 8 RT NEUTRAL	1277091686
DEK 8 SONDERDR. WEIß	1326660000
DEK 8 VI NEUTRAL	1277091689

DEK MultiCard

The Dekafix marker in MultiCard format is the universal marker for all kinds of connectors and also electronic modules from the Weidmüller product range. The blank DEK marker is ideal for flexible, fast printing in situ with our innovative labelling systems SMark-Laser, PrintJet, MCP Plus Plotter or MC-Mobilo. The system is particularly suitable for short sequences of numbers and is also available with special printing.

- In strips for fast installation
- Flexible, fast printing on site during installation
- Excellent printing quality thanks to the Weidmüller MultiCard printers
- Available in 6 widths
- Custom printing with the MC Laser also possible



Technical data

Material	Polyamide 66, halogen-free
UL 94 flammability rating	V2
Temperature range	-40 °C to 100 °C
Printing	black

Ordering data

Colour	Available in all colours of the international colour code; for MC on request									
	<table border="0"> <tr> <td>● brown</td> <td>● red</td> <td>● orange</td> </tr> <tr> <td>● yellow</td> <td>● green</td> <td>● blue</td> </tr> <tr> <td>● violet</td> <td>● grey</td> <td>○ white</td> </tr> </table>	● brown	● red	● orange	● yellow	● green	● blue	● violet	● grey	○ white
● brown	● red	● orange								
● yellow	● green	● blue								
● violet	● grey	○ white								
Special printing	Specify special printing and colours per diskette, Excel file or using the M-Print® PRO software.									
Minimum order quantity	1 pack									
Notes on mounting	<p>Mount in strips when the marker pitch (width) corresponds to the pitch of the terminals.</p> <p>For example, DEK 5 mm pitch for terminals with 5 mm pitch such as the WDU 2.5.</p> <p>Mount individual markers when the terminal pitch is larger than the marker pitch (width).</p> <p>For example, DEK 6.5 mount individually on WDU 6 terminals.</p>									

Dekafix - the universal marker for SAK series, W-series, Z-series, P-series and I-series plus WEICOS connectors and electronics devices.



Clamping width: 3.5 mm

DEK - blank

Ordering data

Type	Material colour	Length	Qty.	Order No.
DEK 5/3,5 MC	white	5 mm	500	1755270000

DEK - Custom printing

Type	Material colour	Length	Qty.	Order No.
DEK 5/3,5 MC	white	5 mm	100	1767730000

Clamping width: 5.0 mm

DEK - blank


Type	Material colour	Length	Qty.	Order No.
DEK 5/5 Plus MC	white	5 mm	1000	1854490000
DEK 5/5 Plus MC GE	yellow	5 mm	1000	1907520000
DEK 5/5 MC	white	5 mm	1000	1609801044
DEK 5/5 MC GE	yellow	5 mm	1000	1609801687
DEK 5/5 MC BL	blue	5 mm	1000	1609801693
DEK 5/5 MC GR	grey	5 mm	1000	1609801691
DEK 5/5 MC GN	green	5 mm	1000	1609801688
DEK 5/5 MC RT	red	5 mm	1000	1609801686

DEK - Custom printing


Type	Material colour	Length	Qty.	Order No.
DEK 5/5 MC	white	5 mm	200	1609810000
DEK 5/5 Plus MC	white	5 mm	200	1854500000

Clamping width: 6.0 / 6.5 mm

DEK - blank


Type	Material colour	Length	Qty.	Order No.
DEK 5/6 MC	white	5 mm	1000	1609820000
DEK 5/6 MC PLUS	white	5 mm	1000	1011320000
DEK 5/6,5 MC	white	5 mm	900	1609840000
DEK 5/6,5 PLUS MC	 white	5 mm	900	1046340000

DEK - Custom printing


Type	Material colour	Length	Qty.	Order No.
DEK 5/6 MC SDR	white	5 mm	200	1609830000
DEK 5/6 MC SDR PLUS	white	5 mm	200	1038650000
DEK 5/6,5 MC	white	5 mm	180	1609850000
DEK 5/6,5 PLUS MC	 white	5 mm	180	1046360000

Clamping width: 7.5 / 8.0 mm

DEK - blank

Type	Material colour	Length	Qty.	Order No.
DEK 5/7,5 MC	white	5 mm	320	1720620000
DEK 5/8 MC	white	5 mm	800	1856740000
DEK 5/8 PLUS MC	 white	5 mm	800	1046350000

DEK - Custom printing

Type	Material colour	Length	Qty.	Order No.
DEK 5/7,5 MC	white	5 mm	64	1770490000
DEK 5/8 MC	white	5 mm	160	1856750000
DEK 5/8 PLUS MC	 white	5 mm	160	1046370000

WS

WS markers are designed specifically for W series terminals. But thanks to their system compatibility, WS markers can also be used with the I series, Z series and P series. The generous size of these markers permit long characters strings and multiple-line printing.

WS markers are ideal for labelling where long, individual character strings are required. And the proven MultiCard format makes labelling possible with the SMark-Laser, PrintJet, MCP Plus Plotter or MC-Mobilo as well.

- Mount in strips or individually
- Markers in the proven MultiCard format
- Excellent printing quality thanks to the Weidmüller MultiCard printers



Technical data

Material	Polyamide 66, halogen-free
UL 94 flammability rating	V2
Temperature range	-40 °C to 100 °C
Printing	black

Bestellhinweis

Colour	Available in all colours of the international colour code; for MC on request ● brown ● red ● orange ● yellow ● green ● blue ● violet ● grey ○ white
Special printing	Specify special printing and colours per diskette, Excel file or using the M-Print® PRO software.
Minimum order quantity	1 pack
Notes on mounting	Mount in strips when the marker pitch (width) corresponds to the pitch of the terminals. For example, WS 10/6 = 6 mm pitch for terminals with 6 mm pitch such as the WDU 4. Mount individual markers when the terminal pitch is larger than the marker pitch (width). For example, WS 12/6.5 mount individually on WDU 6 terminals. Weidmüller markers with 5 mm pitch (width) are suitable for all widths of terminals.

ZS

ZS markers – in the proven MultiCard format – were specially developed for Z series terminals. They provide users with a large labelling area. Their unique hinged form means that cross-connectors, for example, are still readily accessible without having to remove the marker. Markers can be clipped on in strips to guarantee fast installation, but individual markers are easily separated.

- Hinged labelling area
- Mount in strips or individually
- Markers in the proven MultiCard format
- Flexible, fast printing on site during installation



Technical data

Material	Polyamide 66, halogen-free
UL 94 flammability rating	V2
Temperature range	-40 °C to 100 °C
Printing	black

Ordering data

Colour	white
Notes on mounting	height x width (pitch), e.g. ZS 10/5: 10 mm high, 5 mm wide = 5 mm pitch
Special printing	Specify special printing per diskette, Excel file or using the M-Print® PRO software.
Suitable printing systems	SMark-Laser, PrintJet, MCP Plus Plotter, MC-Mobilo
Minimum order quantity	1 pack

WS / ZS

WS markers are perfect for the connectors of the W-series, I-series, P-series and Z-series. WS 10/5 and 10/6 Middle are fitted with a centre foot and can be used for the I-series. The ZS markers are specially conceived for the Z-series.



Clamping width: 3.5 mm

WS - blank

Ordering data

Type	Material colour	Length	Qty.	Order No.
WS 12/3,5 MC	white	12 mm	600	1778270000

WS - Custom printing

Type	Material colour	Length	Qty.	Order No.
WS 12/3,5 MC	white	12 mm	120	1778280000

Clamping width: 5.0 mm

WS - blank

Type	Material colour	Length	Qty.	Order No.
WS 8/5 MC	white	8 mm	720	1640740000
WS 8/5 MC GE	yellow	8 mm	720	1773521687
WS 8/5 MC RT	red	8 mm	720	1773521686
WS 8/5 MC BL	blue	8 mm	720	1773521693
WS 8/5 MC OR	orange	8 mm	720	1773521690
WS 8/5 PLUS MC	white	8 mm	600	1951870000
WS 10/5 MC	white	10 mm	720	1635000000
WS 10/5 MC GE	yellow	10 mm	720	1773531687
WS 10/5 MC Middle	white	10 mm	720	1792000000
WS 10/5 MC RT	red	10 mm	720	1773531686
WS 10/5 MC BL	blue	10 mm	720	1773531693
WS 10/5 PLUS MC	n white	10 mm	600	1046380000
WS 12/5 MC	white	12 mm	720	1609860000
WS 12/5 MC GE	yellow	12 mm	720	1773541687
WS 12/5 MC RT	red	12 mm	720	1773541686
WS 12/5 MC BL	blue	12 mm	720	1773541693
WS 12/5 MC OR	orange	12 mm	720	1773541690
WS 12/5 MC PLUS	white	12 mm	600	1927510000
WS 14/5 MC	white	14 mm	480	1768090000
WS 15/5 MC	white	15 mm	480	1609880000
WS 15/5 MC GE	yellow	15 mm	480	1773571687

WS - Custom printing

Type	Material colour	Length	Qty.	Order No.
WS 8/5 MC	white	8 mm	144	1640750000
WS 8/5 MC PLUS	white	8 mm	120	1038790000
WS 10/5 MC	white	10 mm	144	1635010000
WS 10/5 MC Middle	white	10 mm	144	1792010000
WS 10/5 PLUS MC	n white	10 mm	120	1046320000
WS 12/5 MC	white	12 mm	144	1609870000
WS 12/5 MC PLUS	white	12 mm	120	1927520000
WS 15/5 MC	white	15 mm	96	1609890000

Clamping width: 6.0 mm

WS - blank

Type	Material colour	Length	Qty.	Order No.
WS 8/6 PLUS MC	white	8 mm	600	1951880000
WS 10/6 MC	white	10 mm	600	1828450000
WS 10/6 MC Middle	white	10 mm	600	1818400000
WS 10/6 MC Middle GN	green	10 mm	600	1917420000
WS 10/6 MC Middle GE	yellow	10 mm	600	1917430000
WS 10/6 MC Middle RT	red	10 mm	600	1917440000
WS 10/6 MC Middle OR	orange	10 mm	600	1917410000
WS 10/6 PLUS MC	n white	10 mm	600	1046390000
WS 12/6 MC	white	12 mm	600	1609900000
WS 12/6 MC GE	yellow	12 mm	600	1773551687
WS 12/6 MC RT	red	12 mm	600	1773551686
WS 12/6 MC BL	blue	12 mm	600	1773551693
WS 12/6 MC OR	orange	12 mm	600	1773551690
WS 12/6 MC BR	brown	12 mm	600	1773551692
WS 12/6 MC VI	magenta	12 mm	600	1773551689
WS 12/6 MC PLUS	white	12 mm	600	1927530000

WS markers are perfect for the connectors of the W-series, I-series, P-series and Z-series. WS 10/5 and 10/6 Middle are fitted with a centre foot and can be used for the I-series. The ZS markers are specially conceived for the Z-series.



Ordering data

WS - Custom printing

Type	Material colour	Length	Qty.	Order No.
WS 8/6 PLUS MC	white	8 mm	120	1038820000
WS 10/6 MC	white	10 mm	120	1828460000
WS 10/6 MC Middle	white	10 mm	120	1818410000
WS 10/6 PLUS MC	white	10 mm	120	1046330000
WS 12/6 MC	white	12 mm	120	1609910000
WS 12/6 MC PLUS	white	12 mm	120	1927540000

Clamping width: 6.5 mm

WS - blank

Type	Material colour	Length	Qty.	Order No.
WS 12/6,5 MC	white	12 mm	540	1609920000
WS 12/6,5 MC GE	yellow	12 mm	540	1773561687
WS 12/6,5 MC RT	red	12 mm	540	1773561686
WS 12/6,5 MC BL	blue	12 mm	540	1773561693
WS 12/6,5 MC GN	green	12 mm	540	1773561688

WS - Custom printing

Type	Material colour	Length	Qty.	Order No.
WS 12/6,5 MC	white	12 mm	108	1609930000

Clamping width: 8.0 mm

WS - blank

Type	Material colour	Length	Qty.	Order No.
WS 10/8 MC	white	10 mm	420	1905950000
WS 12/8 MC	white	12 mm	420	1906000000

WS - Custom printing

Type	Material colour	Length	Qty.	Order No.
WS 10/8 MC	white	10 mm	84	1906030000
WS 12/8 MC	white	12 mm	84	1906010000

Clamping width: 12.0 / 15.0 mm

WS - blank

Type	Material colour	Length	Qty.	Order No.
WS 10/12 MC	white	10 mm	300	1905970000
WS 10/15 MC	white	10 mm	240	1854090000

WS - Custom printing

Type	Material colour	Length	Qty.	Order No.
WS 10/12 MC	white	10 mm	60	1906060000
WS 10/15 MC	white	10 mm	48	1854100000

Clamping width: 5.0 mm

ZS - blank

Type	Material colour	Length	Qty.	Order No.
ZS 10/5 MC	white	10 mm	480	1610000000
ZS 15/5 MC	white	15 mm	480	1646630000

ZS - Custom printing

Type	Material colour	Length	Qty.	Order No.
ZS 10/5 MC	white	10 mm	96	1610010000
ZS 15/5 MC	white	15 mm	96	1646640000

Clamping width: 6.0 mm

ZS - blank

Type	Material colour	Length	Qty.	Order No.
ZS 12/6 MC	white	12 mm	400	1610020000

ZS - Custom printing

Type	Material colour	Length	Qty.	Order No.
ZS 12/6 MC	white	12 mm	80	1610030000