



Chipsmall Limited consists of a professional team with an average of over 10 year of expertise in the distribution of electronic components. Based in Hongkong, we have already established firm and mutual-benefit business relationships with customers from,Europe,America and south Asia,supplying obsolete and hard-to-find components to meet their specific needs.

With the principle of “Quality Parts,Customers Priority,Honest Operation,and Considerate Service”,our business mainly focus on the distribution of electronic components. Line cards we deal with include Microchip,ALPS,ROHM,Xilinx,Pulse,ON,Everlight and Freescale. Main products comprise IC,Modules,Potentiometer,IC Socket,Relay,Connector.Our parts cover such applications as commercial,industrial, and automotives areas.

We are looking forward to setting up business relationship with you and hope to provide you with the best service and solution. Let us make a better world for our industry!



Contact us

Tel: +86-755-8981 8866 Fax: +86-755-8427 6832

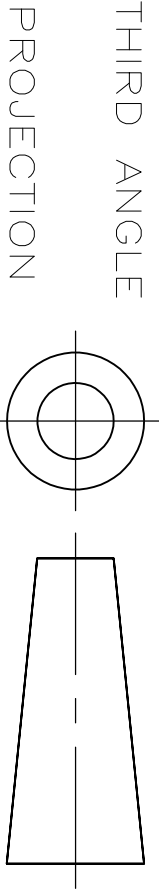
Email & Skype: info@chipsmall.com Web: www.chipsmall.com

Address: A1208, Overseas Decoration Building, #122 Zhenhua RD., Futian, Shenzhen, China

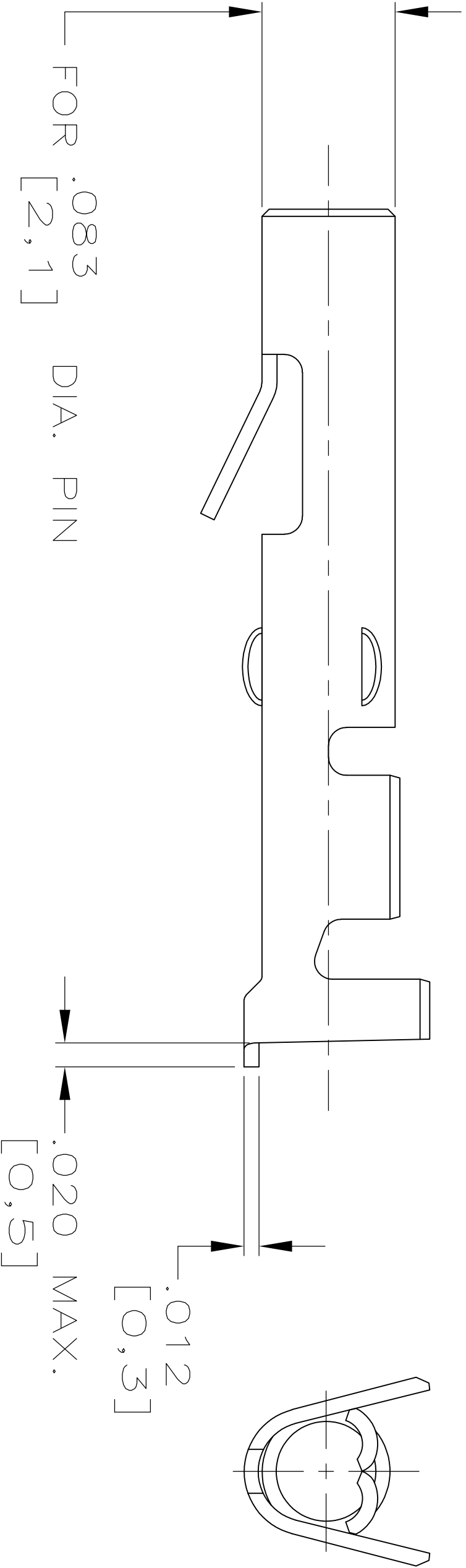
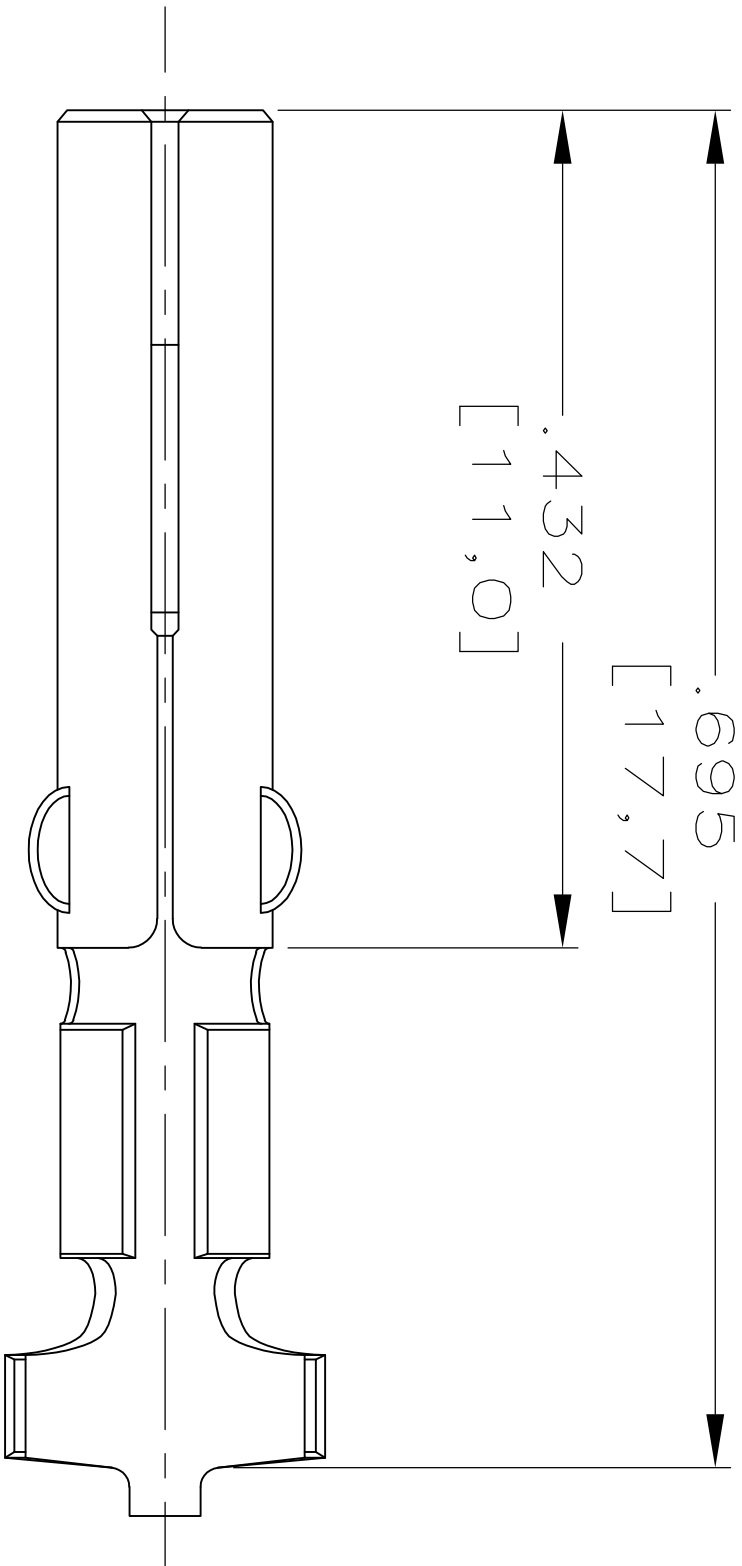


DO NOT SCALE

INCH



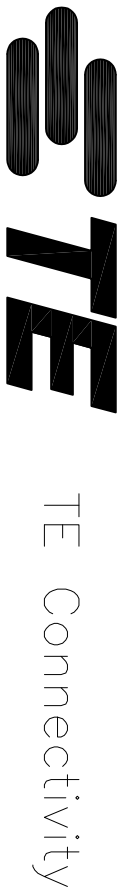
WIRE RANGE :
0,5–1,0mm ² AWG
INSULATION RANGE :
.070–.130 DIA. (1,8–3,3)



PRE TIN	Ph BRONZE	163304–4
NONE	Ph BRONZE	163304–3
PRE TIN	BRASS	163304–2
NONE	BRASS	163304–1
FINISH	MATERIAL	PARTNUMBER

CUSTOMER DRAWING FOR REFERENCE ONLY
WILL NOT BE UPDATED

THIS DRAWING IS UNPUBLISHED
RELEASED FOR PUBLICATION _____,19____



POCKET MATE–N–LOK
LOOSE PIECE

DR.: D.KESSLER	CHK.: P.BEJNON	APP.: -	DWG.No. 163304	REV.LTR. D1	SHEET 1 of 1	A4
DATE: -	DATE: -	DATE: -				