



Chipsmall Limited consists of a professional team with an average of over 10 year of expertise in the distribution of electronic components. Based in Hongkong, we have already established firm and mutual-benefit business relationships with customers from,Europe,America and south Asia,supplying obsolete and hard-to-find components to meet their specific needs.

With the principle of “Quality Parts,Customers Priority,Honest Operation,and Considerate Service”,our business mainly focus on the distribution of electronic components. Line cards we deal with include Microchip,ALPS,ROHM,Xilinx,Pulse,ON,Everlight and Freescale. Main products comprise IC,Modules,Potentiometer,IC Socket,Relay,Connector.Our parts cover such applications as commercial,industrial, and automotives areas.

We are looking forward to setting up business relationship with you and hope to provide you with the best service and solution. Let us make a better world for our industry!



Contact us

Tel: +86-755-8981 8866 Fax: +86-755-8427 6832

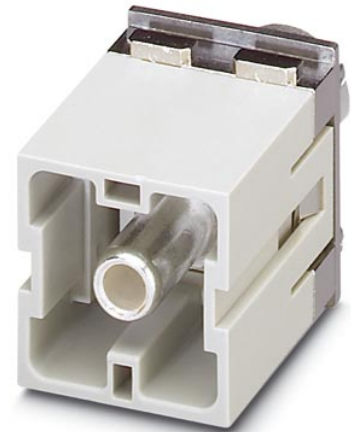
Email & Skype: info@chipsmall.com Web: www.chipsmall.com

Address: A1208, Overseas Decoration Building, #122 Zhenhua RD., Futian, Shenzhen, China



HC-M-HS 200/70-MOD-ST-PE

Order No.: 1636907



<http://eshop.phoenixcontact.de/phoenix/treeViewClick.do?UID=1636907>

HEAVYCON contact insert module, connector, 1-pos., for axial screw connection, 200 A, 40-70 mm², for the PE connection

Commercial data

GTIN (EAN)	 4 046356 095211
Note	Made-to-order
sales group	D042
Pack	1 pcs.
Customs tariff	85366990
Catalog page information	Page 451 (PC-2009)

Product notes

WEEE/RoHS-compliant since:
10/31/2006



<http://www.download.phoenixcontact.com>
Please note that the data given here has been taken from the online catalog. For comprehensive information and data, please refer to the user documentation. The General Terms and Conditions of Use apply to Internet downloads.

Technical data

Electrical characteristics

Note	Required for housing HC-B6 to B48, (housing height min. 72 mm), housing HC-ADVANCE-B6 to B24, hinged retaining frame HC-M-MHR..., axial connection for 5 mm Allen wrench
Rated current	200 A

Ambient temperature (operation)	-40 °C ... 125 °C
Number of positions	1

Mechanical characteristics

Conductor cross-section	40 mm ² ... 70 mm ²
Connection cross-section AWG	1 ... 2/00
Stripping length of the individual wire	16 mm
Tightening torque	9 Nm (40 - 50 mm ²) 10 Nm (70 mm ²)
Wire diameter including insulation	16 mm
Hexagonal socket	WAF 5
Insertion/withdrawal cycles	≥ 500

General characteristics

Number of module slots	2
Connection method	Axial screw connection
Inflammability class acc. to UL 94	V0
Assembly instructions	- Use only flexible conductors,- Connection of wires with 5 mm an Allen wrench,- Housing height h ≥ 72 mm,- Connectors may only be operated without load/voltage.
Connection	<p>Note regarding axial connection technology: Only for stranded wires. The specified conductor cross sections refer to the geometric cross section of the cable used. Use of cables with a geometric cross section very different from the cable's nominal cross section should be checked before use. The wiring space of the axial screw method is designed for fine strand cables according to VDE 0295 Class 5. Deviating cable structures (e.g., Class 6 cables) should be checked before use.</p> <p>Connection Before starting to connect, ensure that the tapered screw is turned back all the way (chamber is open). The cables must not be twisted. The wires should be inserted as far as they will go in the contact chamber (until the insulation touches the contact). Hold wires in position and use socket wrench to tighten. The used wire end should be cut off before connecting again. The connection screw may only be retightened once to prevent the litz wires from breaking. To prevent damage to the contact, the wire/cable should be mechanically intercepted at an appropriate distance from the connection point (e.g., by using a plate cutout). DIN VDE 0100-520:2003-06 contains information on how to do this correctly. The module cannot be used simultaneously with the HC-B...-TMB-SD-IP65 and HC-B...-TMS-SD-IP65 protective covers.</p>

Material data

Contact material	Copper alloy
------------------	--------------

Contact surface material	Ag
Contact carrier material	PC

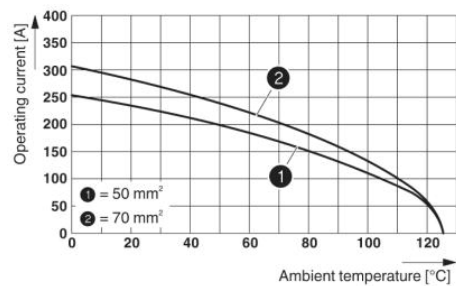
Certificates / Approvals



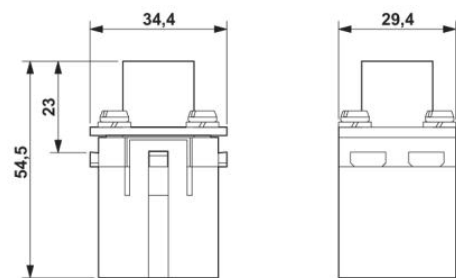
Certification UL

Diagrams/Drawings

Diagram

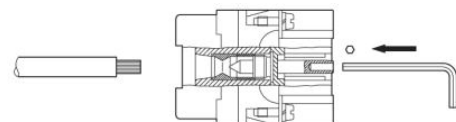


Dimensioned drawing



Male insert

Schematic diagram



Axial screw connection

Address

PHOENIX CONTACT Deutschland GmbH
Flachsmarktstr. 8
32825 Blomberg, Germany
Phone +49 5235 3 12000
Fax +49 5235 3 41200
<http://www.phoenixcontact.de>



© 2010 Phoenix Contact
Technical modifications reserved;