



Chipsmall Limited consists of a professional team with an average of over 10 year of expertise in the distribution of electronic components. Based in Hongkong, we have already established firm and mutual-benefit business relationships with customers from,Europe,America and south Asia,supplying obsolete and hard-to-find components to meet their specific needs.

With the principle of “Quality Parts,Customers Priority,Honest Operation,and Considerate Service”,our business mainly focus on the distribution of electronic components. Line cards we deal with include Microchip,ALPS,ROHM,Xilinx,Pulse,ON,Everlight and Freescale. Main products comprise IC,Modules,Potentiometer,IC Socket,Relay,Connector.Our parts cover such applications as commercial,industrial, and automotives areas.

We are looking forward to setting up business relationship with you and hope to provide you with the best service and solution. Let us make a better world for our industry!



Contact us

Tel: +86-755-8981 8866 Fax: +86-755-8427 6832

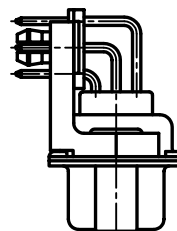
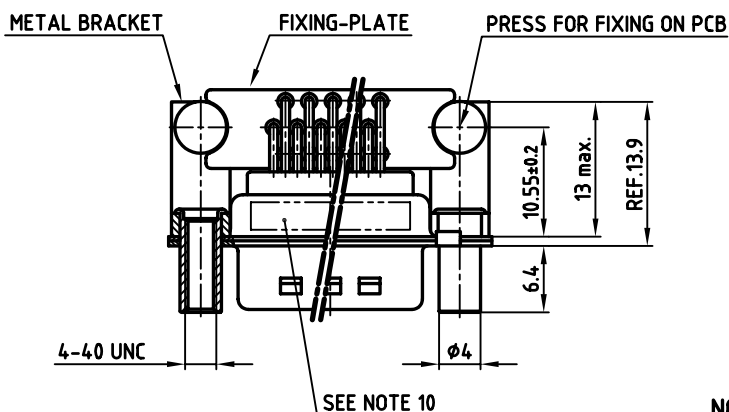
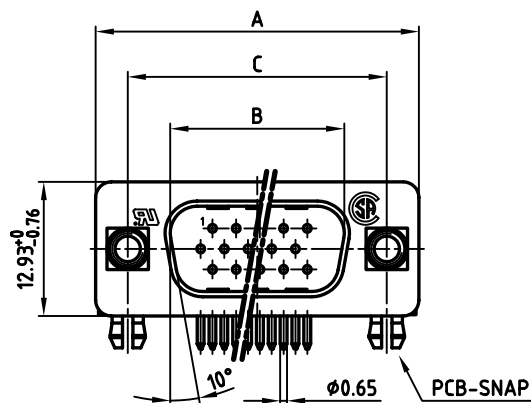
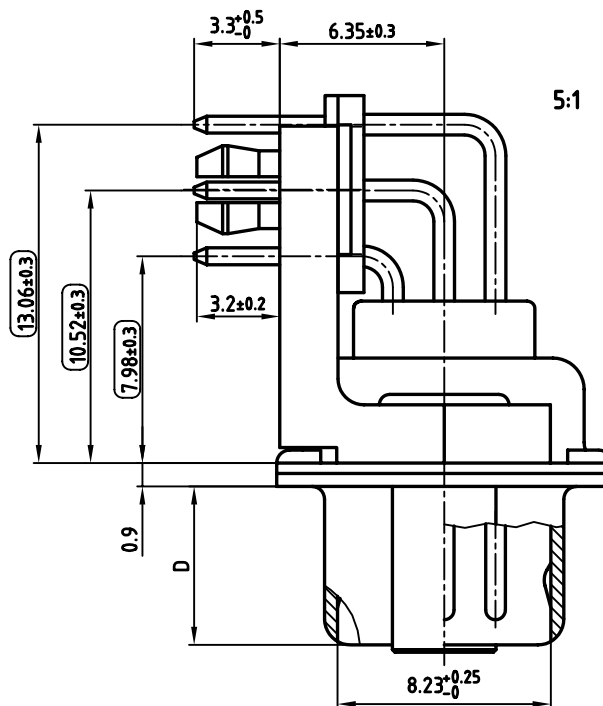
Email & Skype: info@chipsmall.com Web: www.chipsmall.com

Address: A1208, Overseas Decoration Building, #122 Zhenhua RD., Futian, Shenzhen, China



used for: D-SUB HD

POS.	A _{-0.76}	B _{+0.25}	C	D _{-0.3}	PART NO.
15	31.19	16.79	25.00 ^{+0.12} _{-0.13}	6.12	163A17849X
26	39.52	25.12	33.30 ^{+0.15} _{-0.1}	6.12	163A17859X
44	53.42	38.84	47.04 ± 0.13	5.99	163A17869X
62	69.70	55.30	63.50 ± 0.13	5.99	163A17879X



NOTES:

1. METALSHELLS: STEEL; min. 320 μ " TIN
2. INSULATORS: PBT GF UL 94 V-0, BLACK
3. CONTACTS: COPPER ALLOY
PLATING: 8 μ " HARD GOLD OVER min. 50 μ " NICKEL
4. METAL BRACKET: DIE-CASTING; min. 320 μ " TIN over 80 μ " NICKEL
5. THREADED LOCK: COPPER ALLOY; min. 200 μ " TIN over 80 μ " NICKEL
6. PCB-SNAP: COPPER ALLOY; min. 200 μ " TIN over 80 μ " NICKEL
PCB-HOLE: $\phi 3.1 \pm 0.1$; PCB THICKNESS 1.6mm
7. FIXING-PLATE: PBT GF UL 94 V-0, BLACK
8. P.C.B. HOLE DRILLINGS ON SHEET 2
9. MAXIMUM TORQUE VALUE FOR THREAD: 6" LBS
10. CONNECTOR IS PART MARKED: PART-NO. CONEC ABC
11. = CHECK DIMENSION



APPROVAL * FREIGABE * DEBLOCAGE * AUTORIZACION * APPROVAL

CUSTOMER APPROVAL DATE:

NAME: TITLE:

COMPANY NAME:

APPROVAL * FREIGABE * DEBLOCAGE * AUTORIZACION * APPROVAL

THIS DRAWING MAY NOT BE COPIED OR REPRODUCED IN ANY WAY, AND MAY NOT BE PASSED ON TO A THIRD PARTY, WITHOUT WRITTEN PERMISSION. OWNERSHIP AND COPYRIGHT OF CONEC Gmbh DO NOT ALTER CAD DRAWING BY HAND

rev.	description	date	name
a	Origin		

tolerance		dim. in mm
2006	date	name
drawn	20.02.	Lehmenkühler
appd.	20.02.	Mickenbecker
norm	DIN 41652	
d-old		

scale: 2:1 (5:1)

material: SEE NOTES

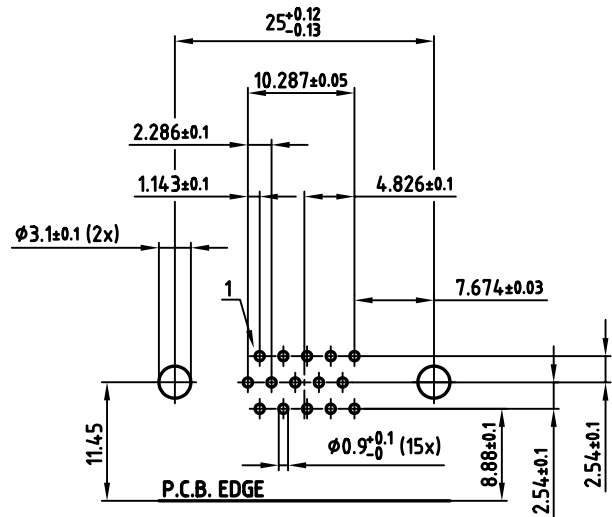
title: D-SUB HD MALE 90°
15-62pos. 0.350inch
threaded lock, metal bracket, clip, fixing-plate

dwg no: AutoCAD 2004 DIN-A 3 sh:1/2

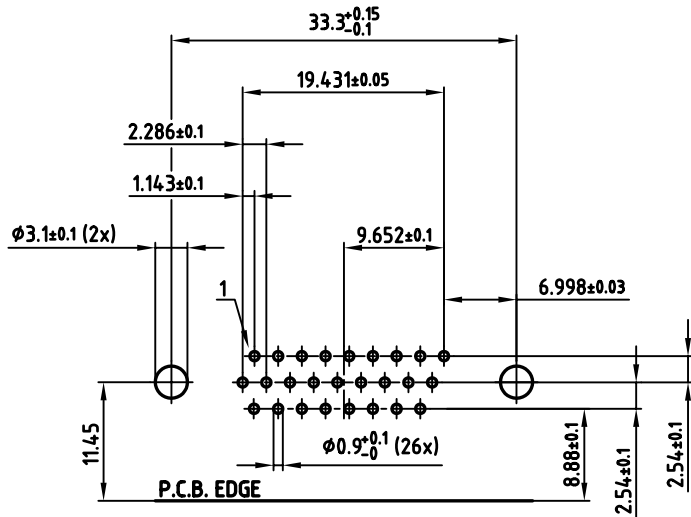
part no: 16K1A1758

SEE TABLE

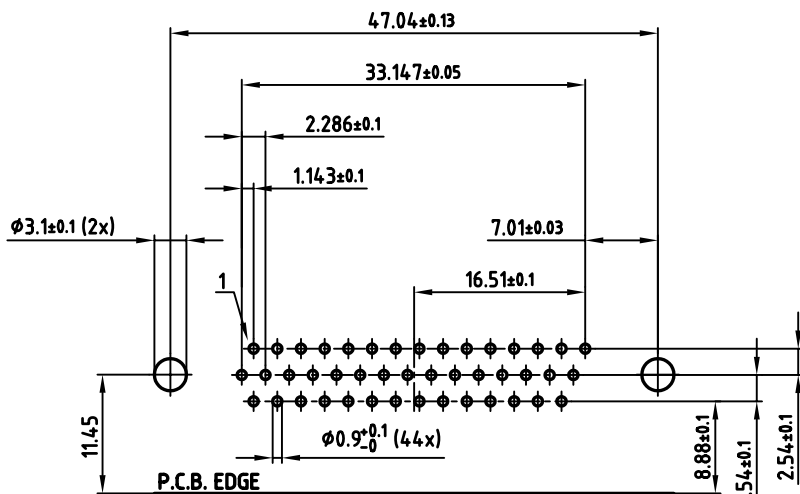
used for: D-SUB HD



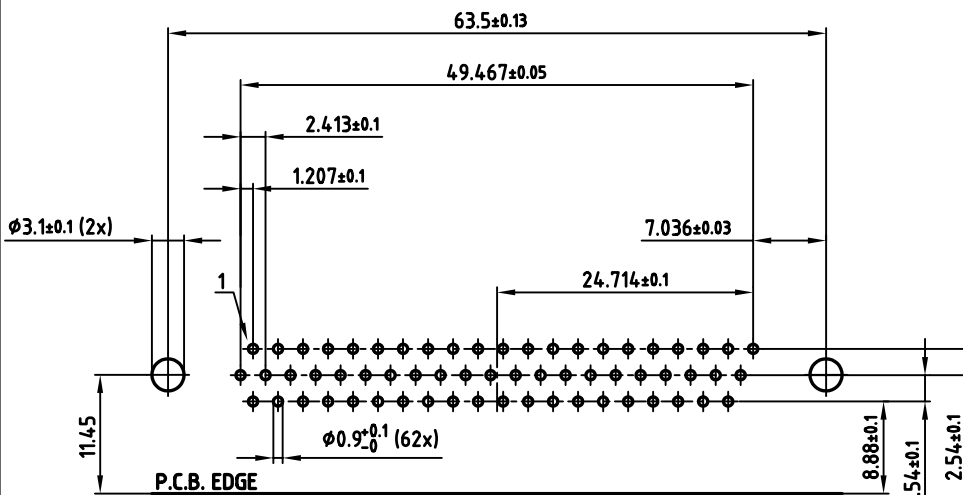
15pos.



26pos.



44pos.



62pos.

APPROVAL # FREIGABE # DEBLOCAGE # AUTORIZACION # APPROVAL	
CUSTOMER APPROVAL DATE:	
NAME:	TITLE:
COMPANY NAME:	
APPROVAL # FREIGABE # DEBLOCAGE # AUTORIZACION # APPROVAL	

THIS DRAWING MAY NOT BE COPIED OR REPRODUCED IN ANY WAY, AND MAY NOT BE PASSED ON TO A THIRD PARTY, WITHOUT WRITTEN PERMISSION. OWNERSHIP AND COPYRIGHT OF CONEC GmbH DO NOT ALTER CAD DRAWING BY HAND

rev.	description	date	name
a	Origin		

tolerance	\varnothing	dim. in mm
2006	date	name
drawn	20.02.	Lehmenkühler
appd.	20.02.	Mickenbecker
norm		
d-old		

scale:	2:1
material:	SEE SHEET 1
title:	
P.C.B. HOLE DRILLINGS D-SUB HD MALE 90° 15-62pos. 0.350inch threaded lock, metal bracket, clip, fixing plate	
dwg no:	AutoCAD 2004
16K1A1758	
part no:	SEE SHEET 1

A