



Chipsmall Limited consists of a professional team with an average of over 10 year of expertise in the distribution of electronic components. Based in Hongkong, we have already established firm and mutual-benefit business relationships with customers from,Europe,America and south Asia,supplying obsolete and hard-to-find components to meet their specific needs.

With the principle of “Quality Parts,Customers Priority,Honest Operation,and Considerate Service”,our business mainly focus on the distribution of electronic components. Line cards we deal with include Microchip,ALPS,ROHM,Xilinx,Pulse,ON,Everlight and Freescale. Main products comprise IC,Modules,Potentiometer,IC Socket,Relay,Connector.Our parts cover such applications as commercial,industrial, and automotives areas.

We are looking forward to setting up business relationship with you and hope to provide you with the best service and solution. Let us make a better world for our industry!



Contact us

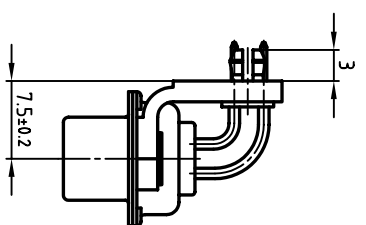
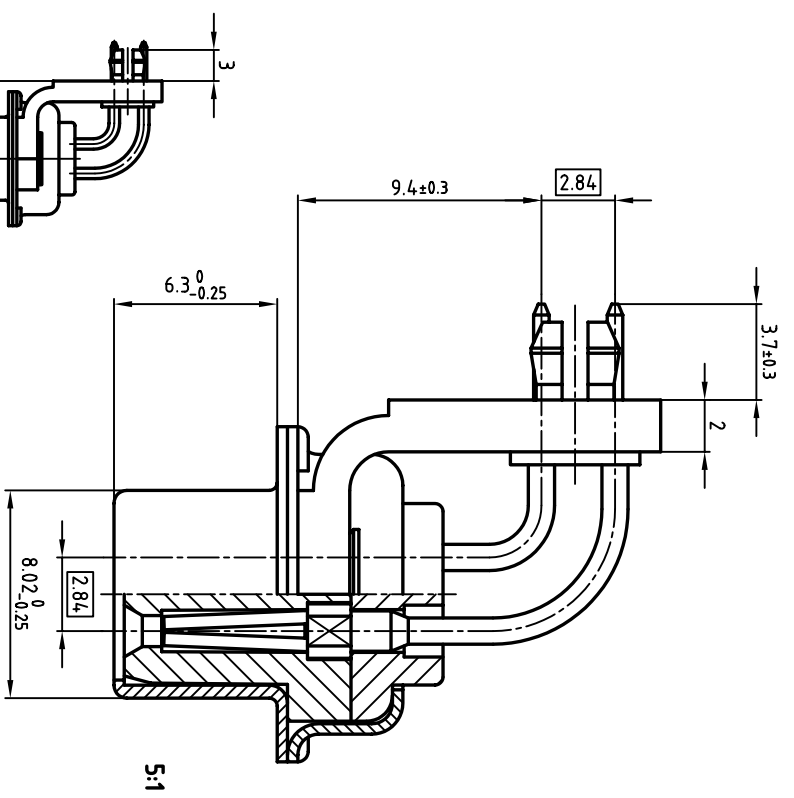
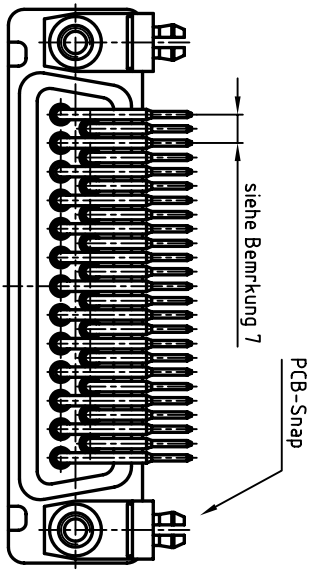
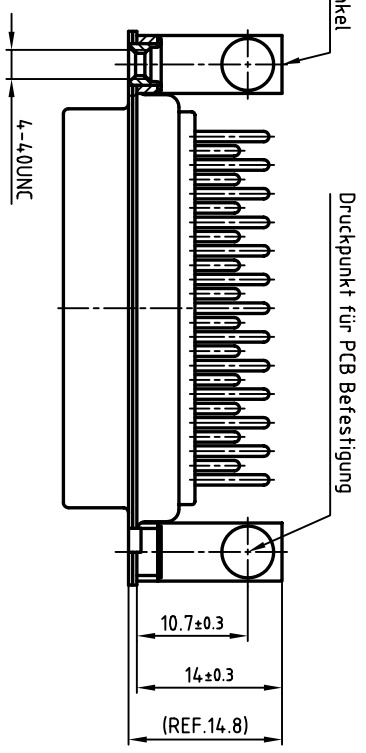
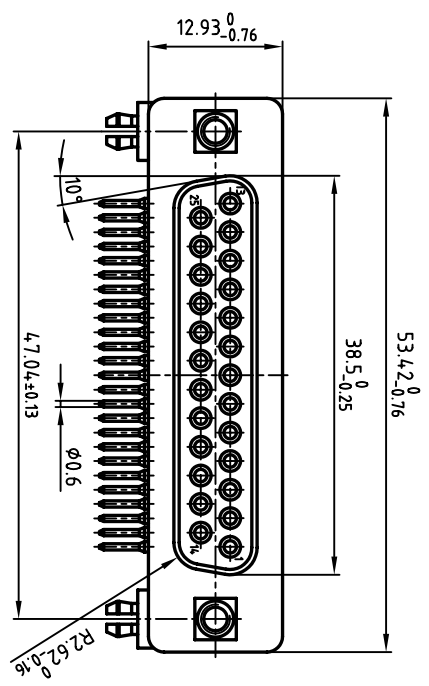
Tel: +86-755-8981 8866 Fax: +86-755-8427 6832

Email & Skype: info@chipsmall.com Web: www.chipsmall.com

Address: A1208, Overseas Decoration Building, #122 Zhenhua RD., Futian, Shenzhen, China



Verw. für: D-SUB



- Bemerkung:**
1. Gehäuse: Stahl; Glanzzinn
 2. Isolierkörper: PBTP GF UL 94, V-0; schwarz
 3. Kontakte: Cu-Legierung
 4. Veredelung: Gütestufe 3
 5. Winkel: Stahl; Glanzzinn
 6. PCB-Snap: Anwendung bei PCB t=1.6 / Bohrung $\phi 3.1 \pm 0.1$
 7. Kontaktanordnung nach DIN 41652 Teil 1

Diese Zeichnung darf ohne unsere ausdrückliche, schriftliche Genehmigung weder vervielfältigt noch dritten Personen ausgehändigt werden. Eigentums- und Urheberrecht vorbehalten.

| Zust. | Änderung | Datum | Name |
|-------|----------|-------|------|
| | | | |
| | | | |
| | | | |
| | | | |
| | | | |
| | | | |
| | | | |
| | | | |
| | | | |
| | | | |

| | | | |
|---------------------------|--------------|---------------------------|--|
| Allgem. Tol. | | Masstab: 2:1 (5:1) | |
| Material: siehe Bemerkung | | Material: siehe Bemerkung | |
| 1996 | NAME | Benennung: | |
| 25.07. | Berthold | D-SUB Buchse 90° | |
| 25.07. | Mickenbecker | 0.370Inch 25pol. | |
| DIN 41652 | | Metallwinkel / Snap | |
| Z-Alt | | Zeichn.Nr.: 16K11W5A | |
| CONEC | | CAD / REL. 13 | |
| Artikel Nr.: 164416789X | | DIN-A | |
| | | 3 | |
| | | Bl:1/1 | |