



Chipsmall Limited consists of a professional team with an average of over 10 year of expertise in the distribution of electronic components. Based in Hongkong, we have already established firm and mutual-benefit business relationships with customers from,Europe,America and south Asia,supplying obsolete and hard-to-find components to meet their specific needs.

With the principle of "Quality Parts,Customers Priority,Honest Operation,and Considerate Service",our business mainly focus on the distribution of electronic components. Line cards we deal with include Microchip,ALPS,ROHM,Xilinx,Pulse,ON,Everlight and Freescale. Main products comprise IC,Modules,Potentiometer,IC Socket,Relay,Connector.Our parts cover such applications as commercial,industrial, and automotives areas.

We are looking forward to setting up business relationship with you and hope to provide you with the best service and solution. Let us make a better world for our industry!



## Contact us

Tel: +86-755-8981 8866 Fax: +86-755-8427 6832

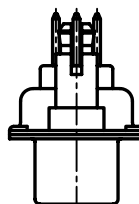
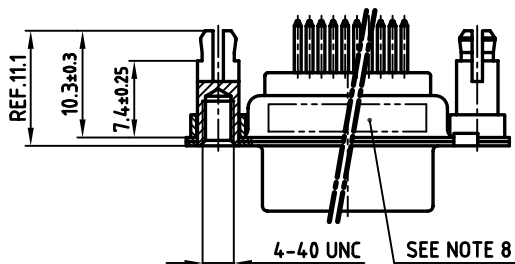
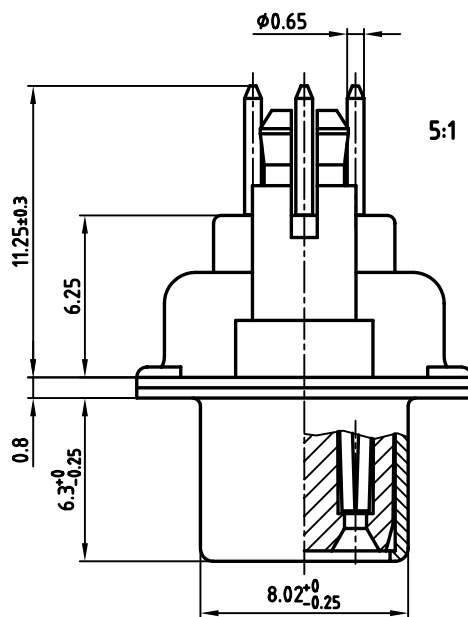
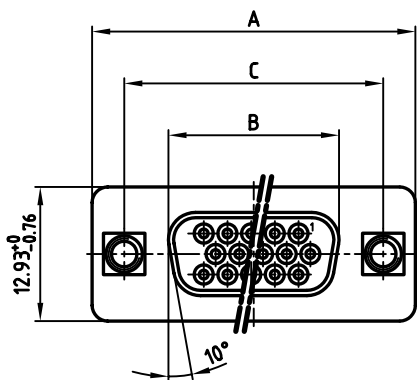
Email & Skype: info@chipsmall.com Web: www.chipsmall.com

Address: A1208, Overseas Decoration Building, #122 Zhenhua RD., Futian, Shenzhen, China



used for: D-SUB HD

No. of Pos.	A <sup>-0.76</sup>	B <sup>-0.25</sup>	C <sup>+0.12</sup> <sup>-0.13</sup>	Part No.
15	31.19	16.46	25.00	164A17359X
26	39.52	24.79	33.30 <sup>+0.15</sup> <sup>-0.1</sup>	164A17369X
44	53.42	38.50	47.04 $\pm 0.13$	164A17379X
62	69.70	54.96	63.50 $\pm 0.13$	164A17389X



**NOTES:**

- METALSHELLS: STEEL; min. 315µin TIN over 40-80µin NICKEL
- INSULATORS: PBT GF UL 94 V-0, BLACK
- CONTACTS: COPPER ALLOY  
PLATING: 8µin HARD GOLD OVER min. 50µin NICKEL
- THREADED SPACER CLIP: COPPER ALLOY; min. 200µin TIN over 80µin NICKEL  
PCB-HOLE:  $\phi 3.1 \pm 0.1$ ; PCB THICKNESS 1.6mm
- COLLAR: COPPER ALLOY; min. 200µin TIN over 80µin NICKEL
- P.C.B. HOLE DRILLINGS ON SHEET 2
- MAXIMUM TORQUE VALUE FOR THREAD: 6 in.LB
- CONNECTOR IS PART MARKED: PART-NO. CONEC ABC

Directive 2002/95/EC  
 „RoHS“  
 Compliant

APPROVAL * FREIGABE * DEBLOCAGE * AUTORIZACION * APPROVAL	
CUSTOMER APPROVAL DATE:	
NAME:	TITLE:
COMPANY NAME:	
APPROVAL * FREIGABE * DEBLOCAGE * AUTORIZACION * APPROVAL	

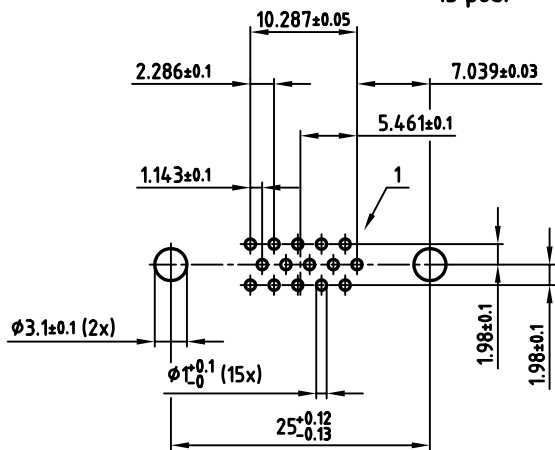
THIS DRAWING MAY NOT BE COPIED OR REPRODUCED IN ANY WAY, AND MAY NOT BE PASSED ON TO A THIRD PARTY, WITHOUT WRITTEN PERMISSION. OWNERSHIP AND COPYRIGHT OF CONEC GmbH DO NOT ALTER CAD DRAWING BY HAND

tolerance		 dim. in mm	scale: 2:1 (5:1)	
2006	date		material: SEE NOTES	
drawn	03.08.	name	title:	
appd.	03.08.	Lehmenkühler	<b>D-SUB HD FEMALE</b> 15-62pos. SOLDER PIN STRAIGHT with threaded spacer clip	
norm		Kühle		
d-old			dwg no: AutoCAD 2006	
a	Origin	<b>CONEC</b> <sup>®</sup>		DIN-A
rev.	description	date	name	3
				sh:1/2

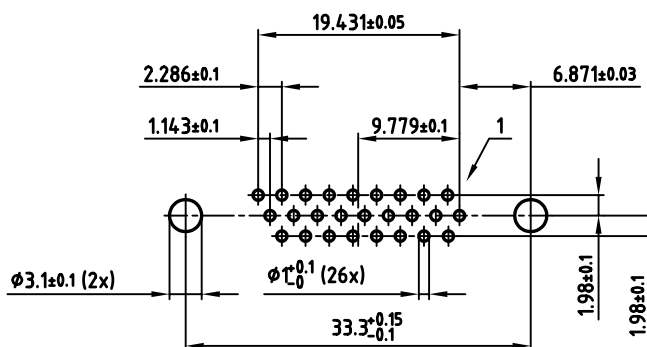
<b>16K2A676</b> part no: SEE TABLE	
---------------------------------------	--

used for: D-SUB HD

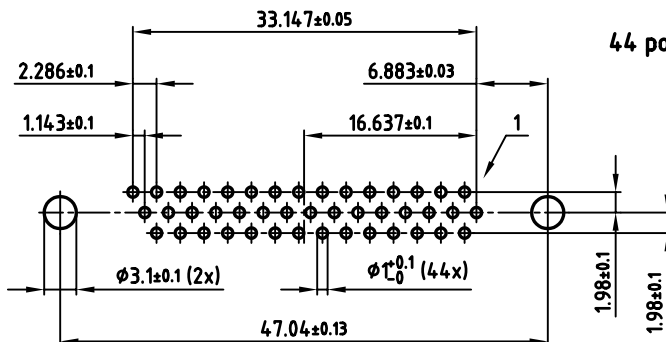
15 pos.



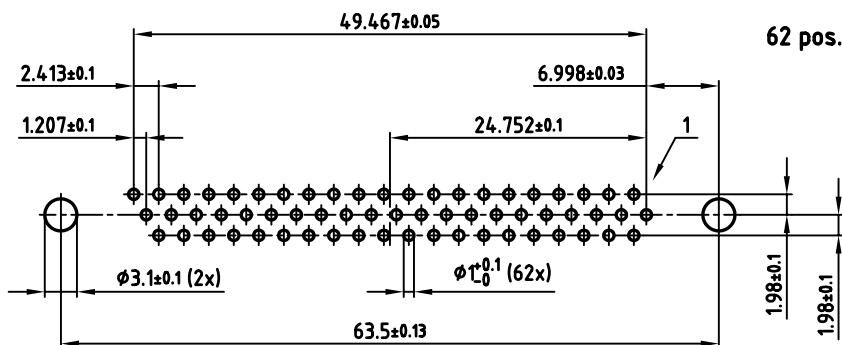
26 pos.



44 pos.



62 pos.



APPROVAL \* FREIGABE \* DEBLOCAGE \* AUTORIZACION \* APPROVAL

CUSTOMER APPROVAL DATE:

NAME: TITLE:

COMPANY NAME:

APPROVAL \* FREIGABE \* DEBLOCAGE \* AUTORIZACION \* APPROVAL

THIS DRAWING MAY NOT BE COPIED OR REPRODUCED IN ANY WAY, AND MAY NOT BE PASSED ON TO A THIRD PARTY, WITHOUT WRITTEN PERMISSION. OWNERSHIP AND COPYRIGHT OF CONEC GmbH DO NOT ALTER CAD DRAWING BY HAND

rev.	description	date	name
a	Origin		

tolerance		scale:	2:1
	dim. in mm	material:	SEE SHEET 1
2006	date	name	
drawn	03.08.	Lehmenkühler	
appd.	03.08.	Kühle	
norm	DIN 41652		
d-old			

title: P.C.B. HOLE DRILLINGS  
D-SUB HD FEMALE 15-62pos. SOLDER PIN with threaded spacer clip

dwg no: AutoCAD 2006 DIN-A 3 sh:2/2

part no: SEE SHEET 1

6

5

4

2

1