



Chipsmall Limited consists of a professional team with an average of over 10 year of expertise in the distribution of electronic components. Based in Hongkong, we have already established firm and mutual-benefit business relationships with customers from,Europe,America and south Asia,supplying obsolete and hard-to-find components to meet their specific needs.

With the principle of "Quality Parts,Customers Priority,Honest Operation,and Considerate Service",our business mainly focus on the distribution of electronic components. Line cards we deal with include Microchip,ALPS,ROHM,Xilinx,Pulse,ON,Everlight and Freescale. Main products comprise IC,Modules,Potentiometer,IC Socket,Relay,Connector.Our parts cover such applications as commercial,industrial, and automotives areas.

We are looking forward to setting up business relationship with you and hope to provide you with the best service and solution. Let us make a better world for our industry!



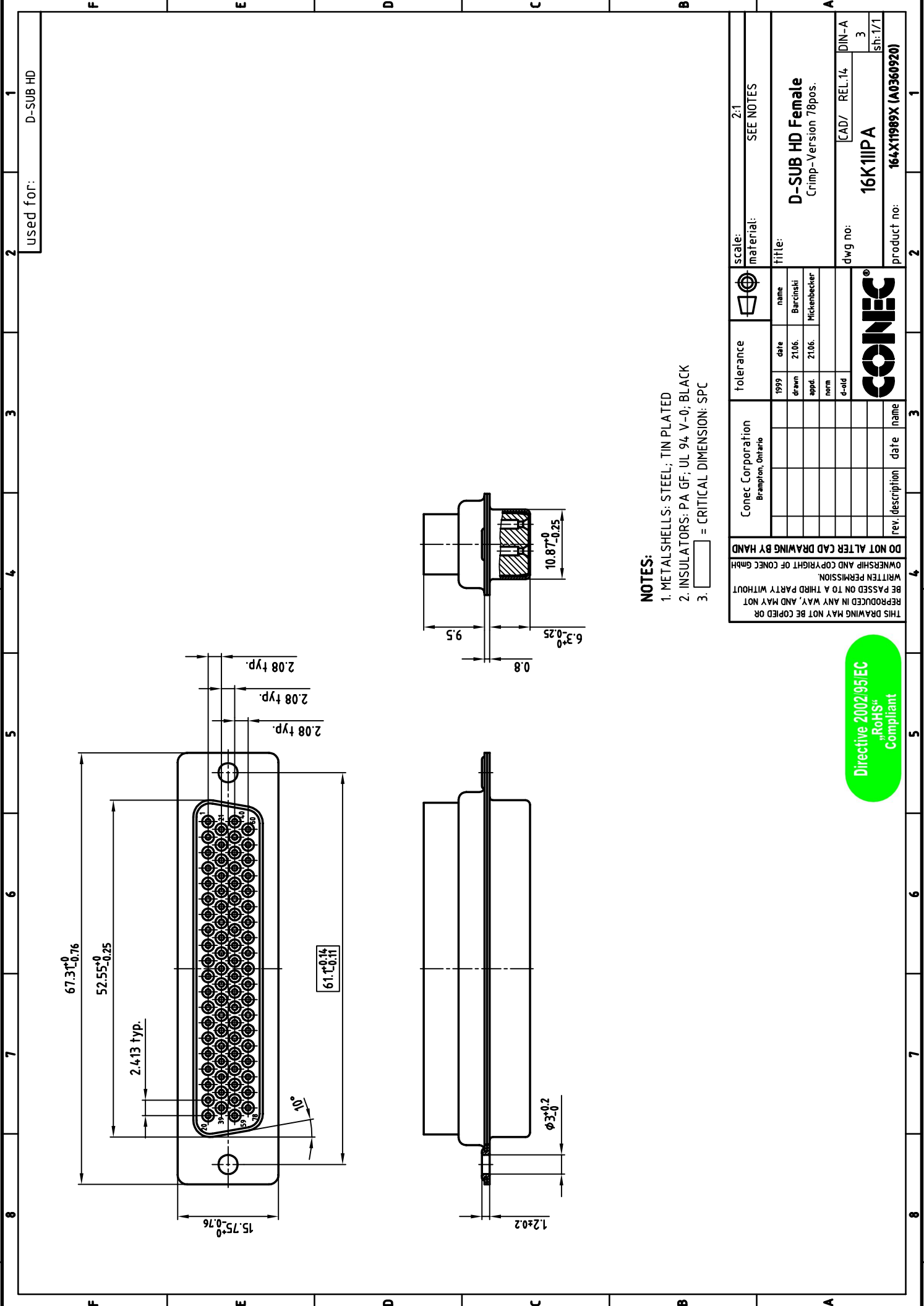
Contact us

Tel: +86-755-8981 8866 Fax: +86-755-8427 6832

Email & Skype: info@chipsmall.com Web: www.chipsmall.com

Address: A1208, Overseas Decoration Building, #122 Zhenhua RD., Futian, Shenzhen, China





NOTES:
 1. METAL SHELLS: STEEL; TIN PLATED
 2. INSULATORS: PA GF; UL 94 V-0; BLACK
 3. □ = CRITICAL DIMENSION: SPC

Conec Corporation Brampton, Ontario		tolerance		scale: 2:1	
1999	date	1999	date	material:	SEE NOTES
	drawn	2106	drawn	Barcinski	
	appd.	2106	appd.	Mickenbecker	
	norm		norm		
	e-old		e-old		
DO NOT ALTER CAD DRAWING BY HAND		Conec Corporation		title:	
OWNERSHIP AND COPYRIGHT OF CONEC GMBH		Brampton, Ontario		D-SUB HD Female	
WRITTEN PERMISSION		rev. description		Crimp-Version 78pos.	
BE PASSED ON TO A THIRD PARTY WITHOUT		date		[CAD/ REL:14/ DIN-A	
REPRODUCED IN ANY WAY, AND MAY NOT		name		16K11IPA	
THIS DRAWING MAY NOT BE COPIED OR		date		dwg no:	
		name		164X11989X (A0360920)	
		date		product no:	
		name		sh:1/1	
		date		3	
		name		3	
		date		1	
		name		1	

Directive 2002/95/EC
 "RoHS"
 Compliant

used for: D-SUB HD