



Chipsmall Limited consists of a professional team with an average of over 10 year of expertise in the distribution of electronic components. Based in Hongkong, we have already established firm and mutual-benefit business relationships with customers from,Europe,America and south Asia,supplying obsolete and hard-to-find components to meet their specific needs.

With the principle of “Quality Parts,Customers Priority,Honest Operation,and Considerate Service”,our business mainly focus on the distribution of electronic components. Line cards we deal with include Microchip,ALPS,ROHM,Xilinx,Pulse,ON,Everlight and Freescale. Main products comprise IC,Modules,Potentiometer,IC Socket,Relay,Connector.Our parts cover such applications as commercial,industrial, and automotives areas.

We are looking forward to setting up business relationship with you and hope to provide you with the best service and solution. Let us make a better world for our industry!



## Contact us

Tel: +86-755-8981 8866 Fax: +86-755-8427 6832

Email & Skype: [info@chipsmall.com](mailto:info@chipsmall.com) Web: [www.chipsmall.com](http://www.chipsmall.com)

Address: A1208, Overseas Decoration Building, #122 Zhenhua RD., Futian, Shenzhen, China



THIS DRAWING IS UNPUBLISHED.

RELEASED FOR PUBLICATION

© COPYRIGHT - By - ALL RIGHTS RESERVED.

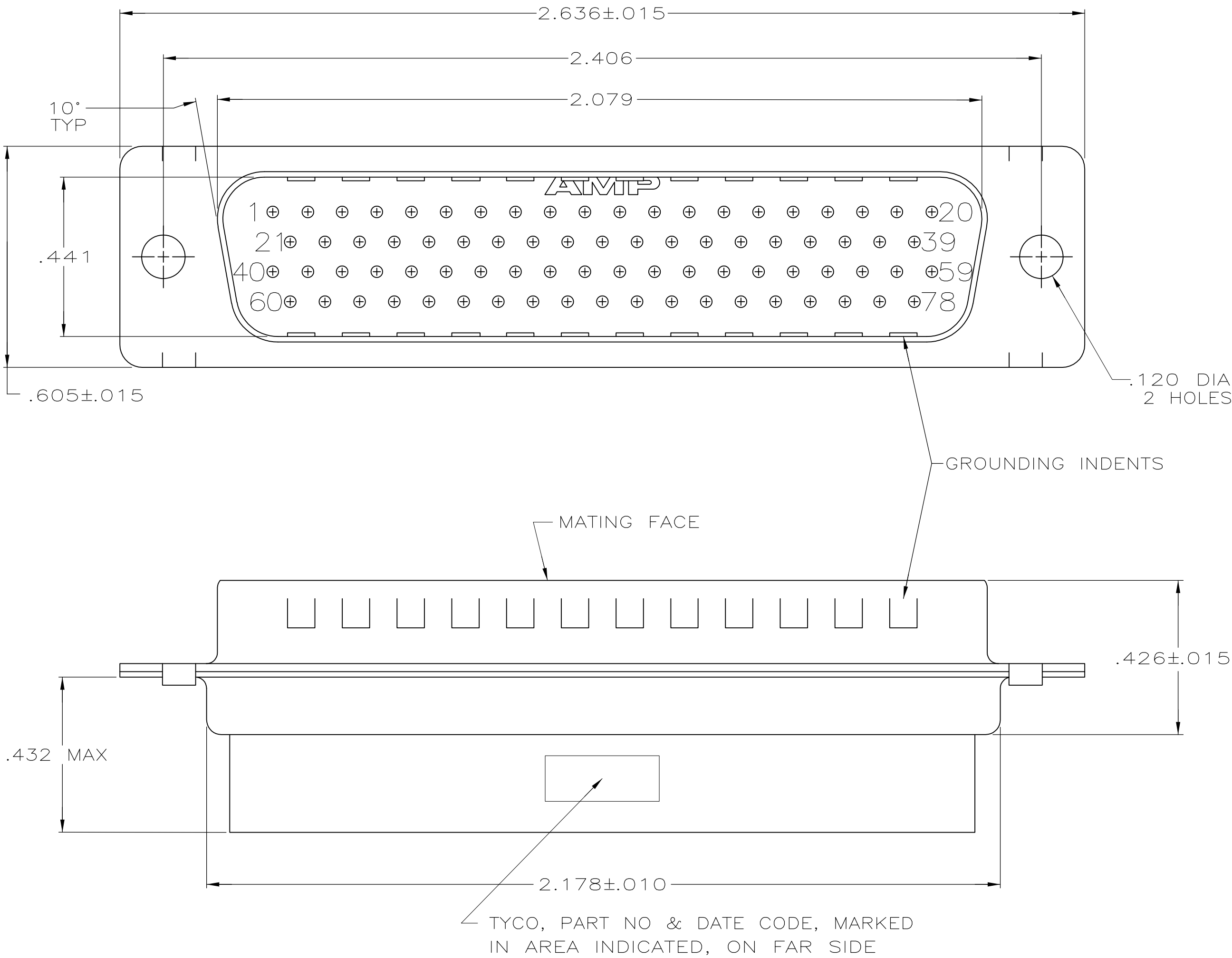
LOC	DIST	REVISIONS					
		P	LTR	DESCRIPTION	DATE	DWN	APVD
GP	00						
			A	REVISED PER ECO-11-002006	11APR2011	CJV	CWR

D

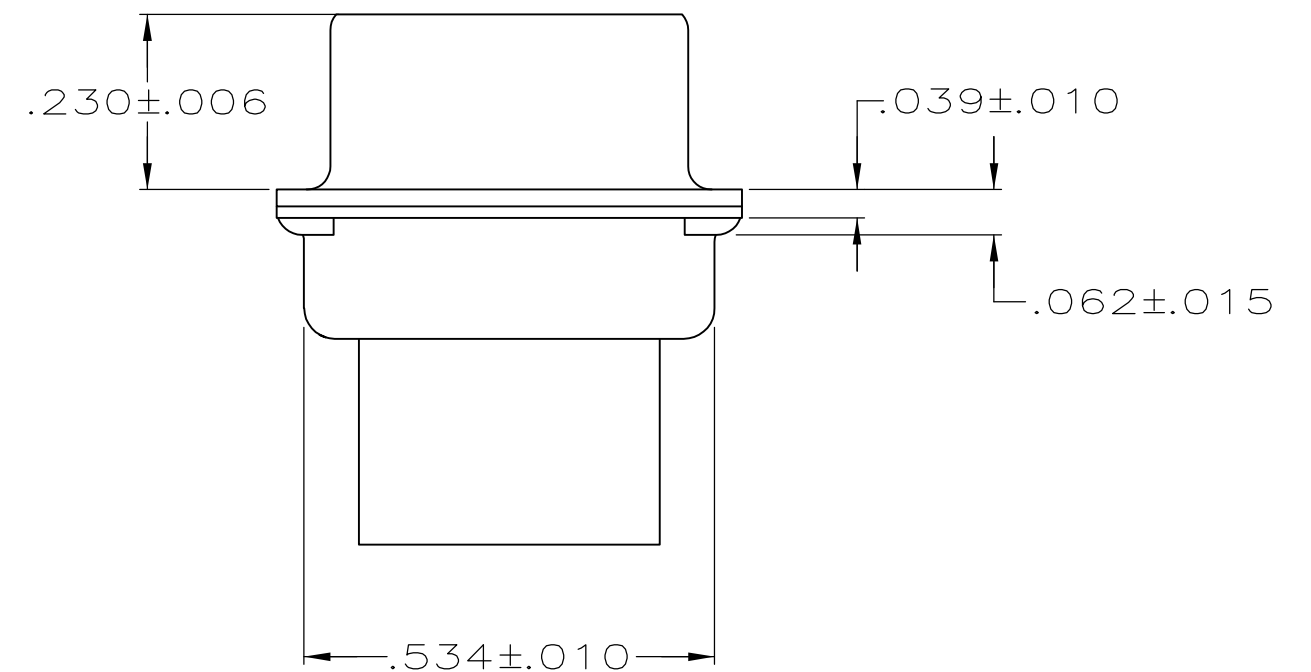
C

B

A



- CONNECTOR ACCEPTS 22 DF PIN CONTACTS, RETENTION TINES ARE AN INTEGRAL PART OF INSERT.
- MOLDED PART MATERIAL: FLAME RETARDANT 94V-0 RATED GLASS FILLED NYLON, COLOR: BLACK.
- SHELL MATERIAL: CARBON STEEL.
- SHELL FINISH: .000200 MIN TIN PLATE OVER .000100 MIN COPPER UNDERPLATE.



D

C

B

A

THIS DRAWING IS A CONTROLLED DOCUMENT.		DWN L. BAUM 02JAN04	1658674-1			
DIMENSIONS: INCHES		CHK S. BOLASH 02JAN04	PART NUMBER			
		APVD M. WALMSLEY 02JAN04	NAME			
		PRODUCT SPEC				
TOLERANCES UNLESS OTHERWISE SPECIFIED:		114-10001	PLUG ASSEMBLY, SIZE 5, 78 POSN, HDP-22, AMPLIMITE®			
0 PLC ± -		114-10001	SIZE			
1 PLC ± -		114-10001	CAGE CODE			
2 PLC ± -		114-10001	DRAWING NO			
3 PLC ± .005		114-10001	RESTRICTED TO			
4 PLC ± -		114-10001	-			
ANGLES ± 2°		114-10001	-			
FINISH		114-10001	-			
MATERIAL		114-10001	-			
2 3		114-10001	-			
4		114-10001	-			
CUSTOMER DRAWING		114-10001	-			
SCALE 4:1		114-10001	-			
SHEET 1 of 1		114-10001	-			
REV A		114-10001	-			