



Chipsmall Limited consists of a professional team with an average of over 10 year of expertise in the distribution of electronic components. Based in Hongkong, we have already established firm and mutual-benefit business relationships with customers from,Europe,America and south Asia,supplying obsolete and hard-to-find components to meet their specific needs.

With the principle of "Quality Parts,Customers Priority,Honest Operation,and Considerate Service",our business mainly focus on the distribution of electronic components. Line cards we deal with include Microchip,ALPS,ROHM,Xilinx,Pulse,ON,Everlight and Freescale. Main products comprise IC,Modules,Potentiometer,IC Socket,Relay,Connector.Our parts cover such applications as commercial,industrial, and automotives areas.

We are looking forward to setting up business relationship with you and hope to provide you with the best service and solution. Let us make a better world for our industry!



Contact us

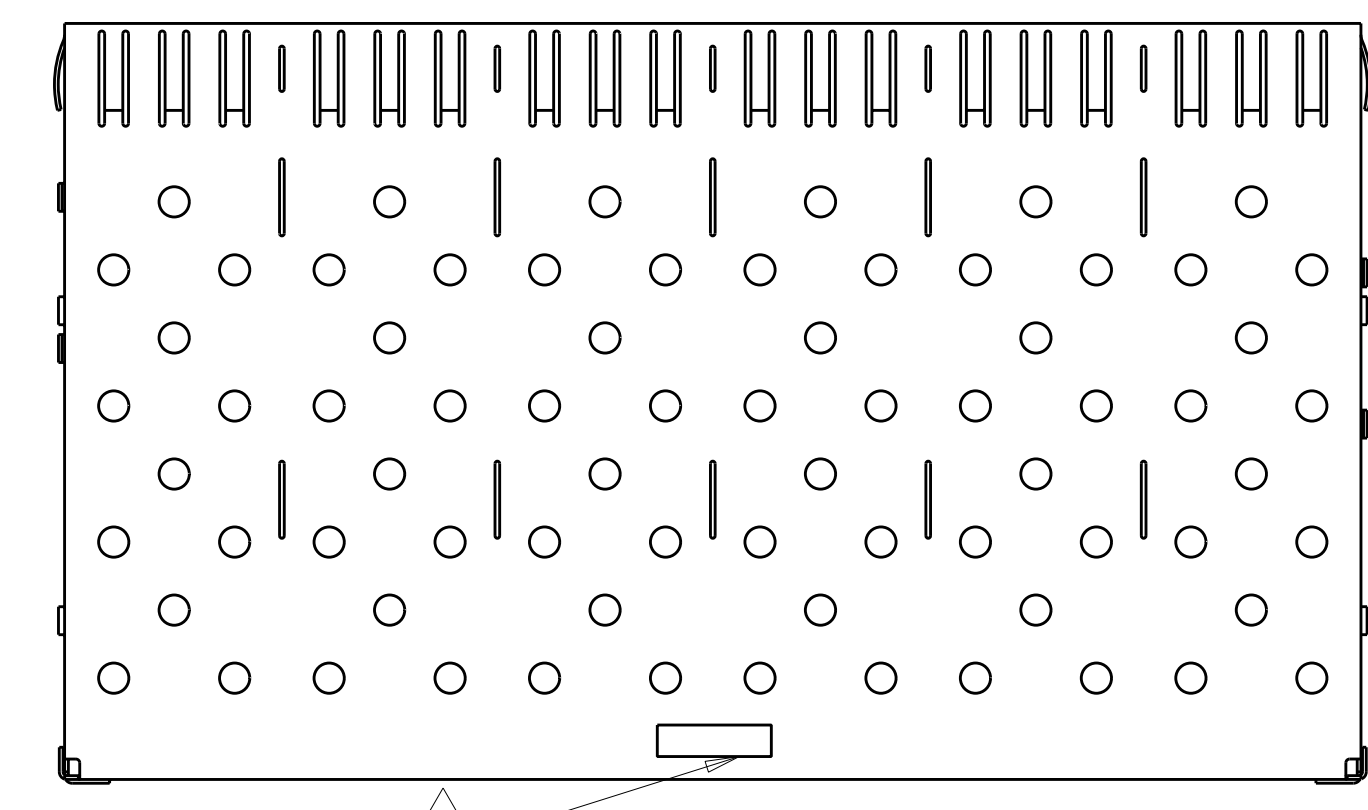
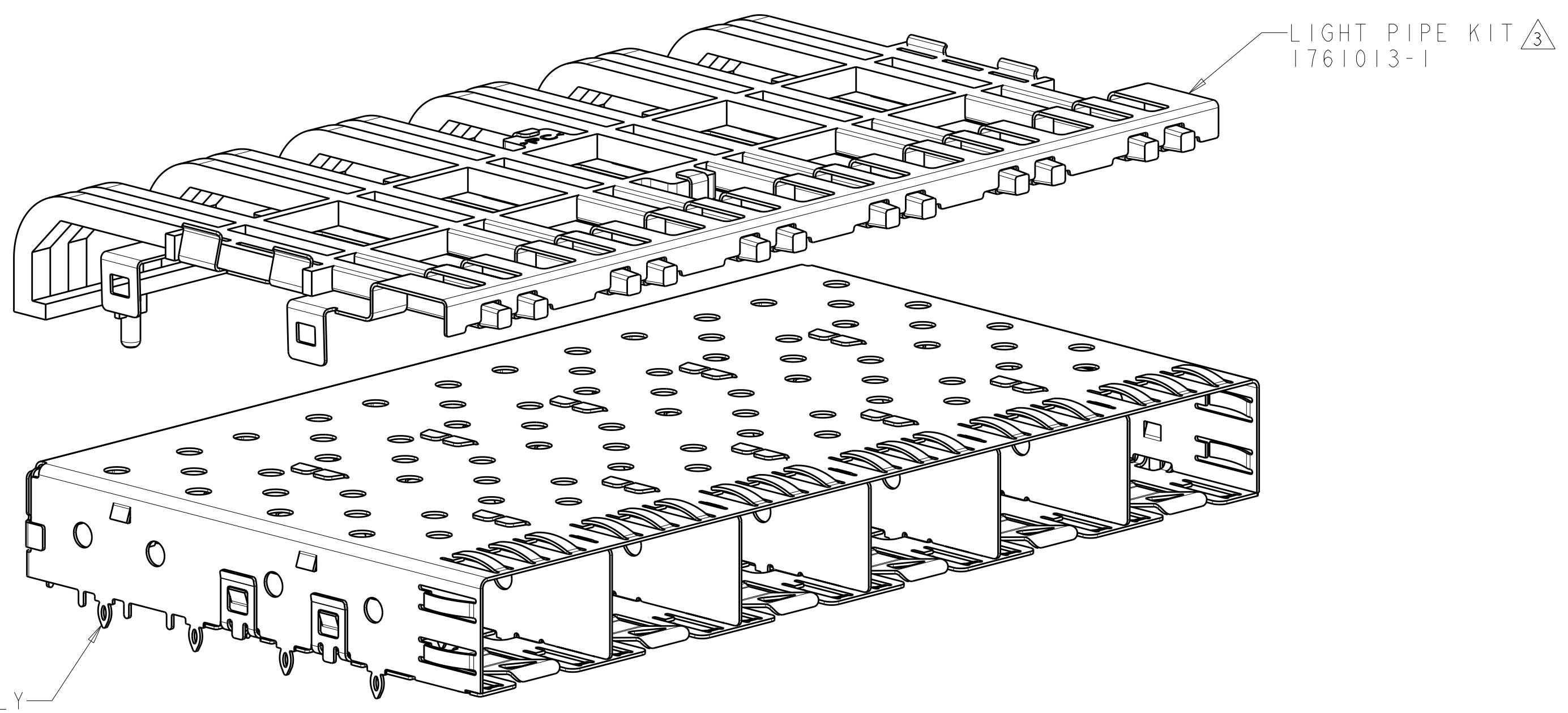
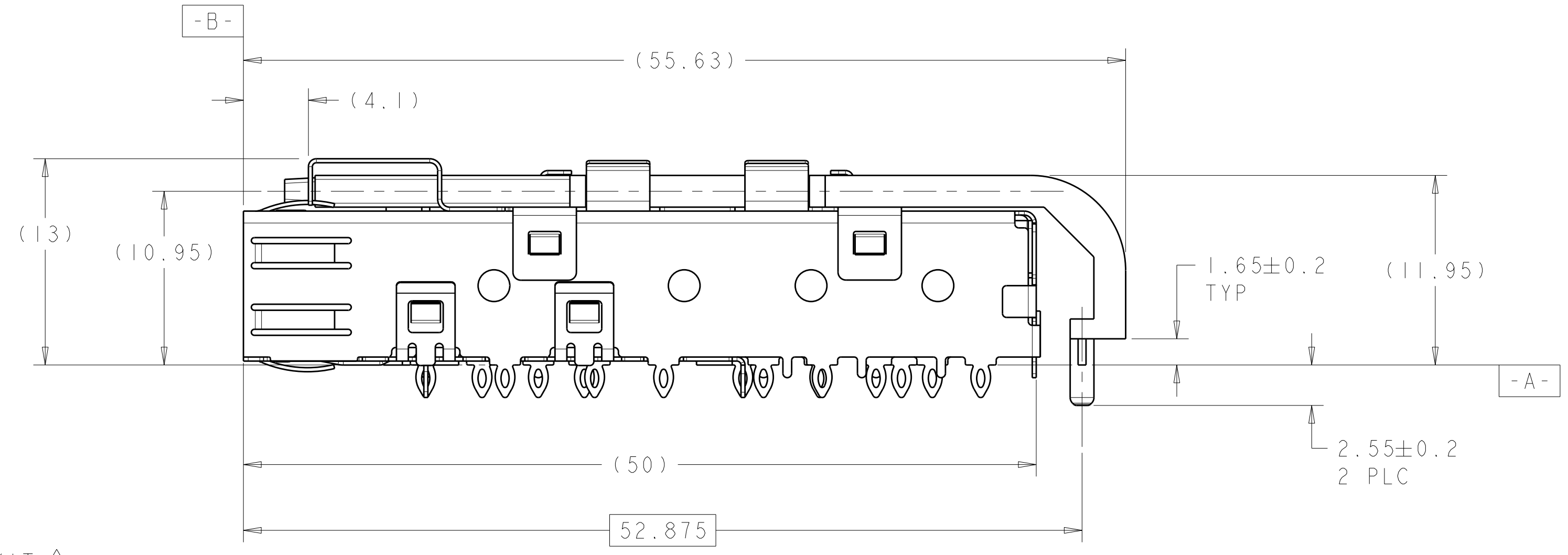
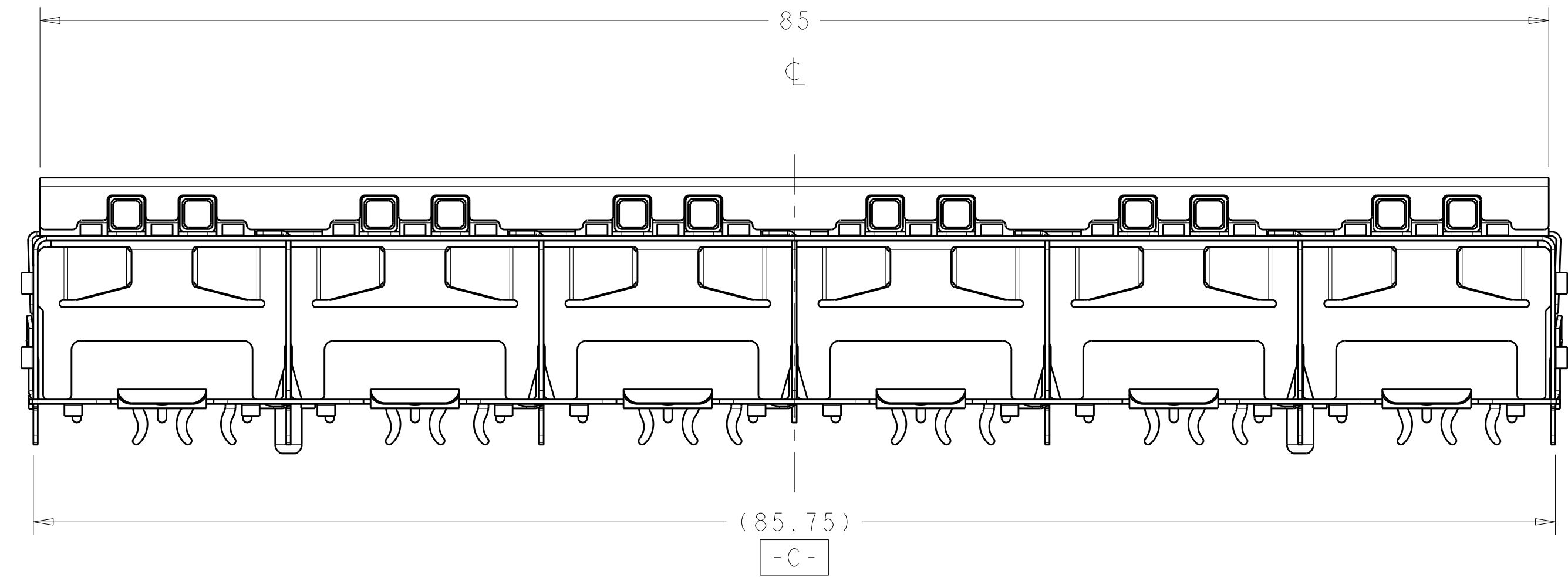
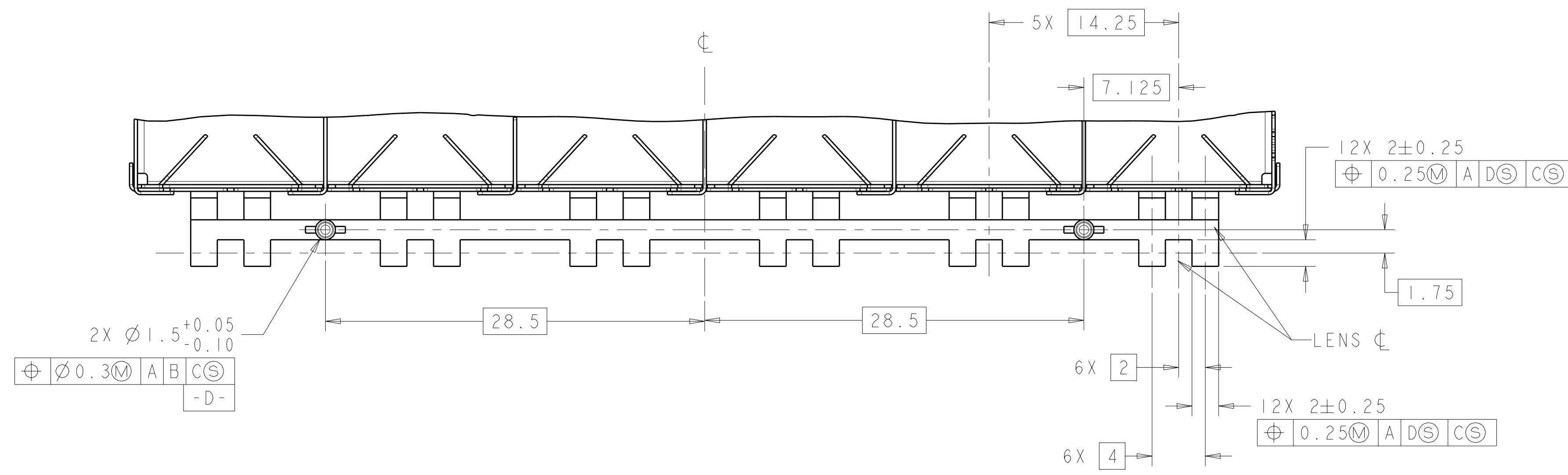
Tel: +86-755-8981 8866 Fax: +86-755-8427 6832

Email & Skype: info@chipsmall.com Web: www.chipsmall.com

Address: A1208, Overseas Decoration Building, #122 Zhenhua RD., Futian, Shenzhen, China



LOC	DIST	REV	DESCRIPTION	DATE	DWN	APVD
GP	00	E1	REVISED PER ECO-11-007052	06APR2011	JY	CW



- △ PADS AND VIAS CHASSIS GROUND
- △ DATUM AND BASIC DIMENSIONS ESTABLISHED BY CUSTOMER.
- △ LIGHT PIPE KIT WHICH IS SEPARATE FROM CAGE ASSEMBLY, KIT TO BE ATTACHED AFTER SEATING OF 1761015-1 ON PC BOARD.
- 4. LABEL ON CAGE WILL HAVE PART NUMBER 1761015-1.
- 5. REFERENCE STYLE 1 ON APPLICATION SPECIFICATION 114-13165 FOR ADDITIONAL INFORMATION ON CAGE ASSEMBLIES WITH LIGHT PIPES.
- △ REFERENCE APPLICATION SPEC 114-13120, HOLE A, FOR RECOMMENDED DRILL HOLES DIAMETER AND PLATING THICKNESSES.
- △ REFERENCE APPLICATION SPEC 114-13120, HOLE B, FOR RECOMMENDED DRILL HOLES DIAMETER AND PLATING THICKNESSES.
- △ PATTERN REPEATS FOR EACH PORT. SPACING BETWEEN PORTS IS 14.25mm.
- △ MINIMUM PC BOARD THICKNESS = 1.50mm.
- △ COMPANY LOGO IN APPROXIMATE AREA SHOWN
- △ BOX WILL CONTAIN TRAYS OF CAGES AND TRAYS OF LIGHT PIPE ASSEMBLIES.
- △ BOX WILL CONTAIN TRAYS OF CAGES AND TRAYS OF LIGHT PIPE ASSEMBLIES. ONE TRAY OF CAGE AND ONE TRAY OF LIGHT PIPE ASSEMBLIES WILL BE HELD BY A LARGE RUBBER BAND.

1658939-1
SCALE 3:1

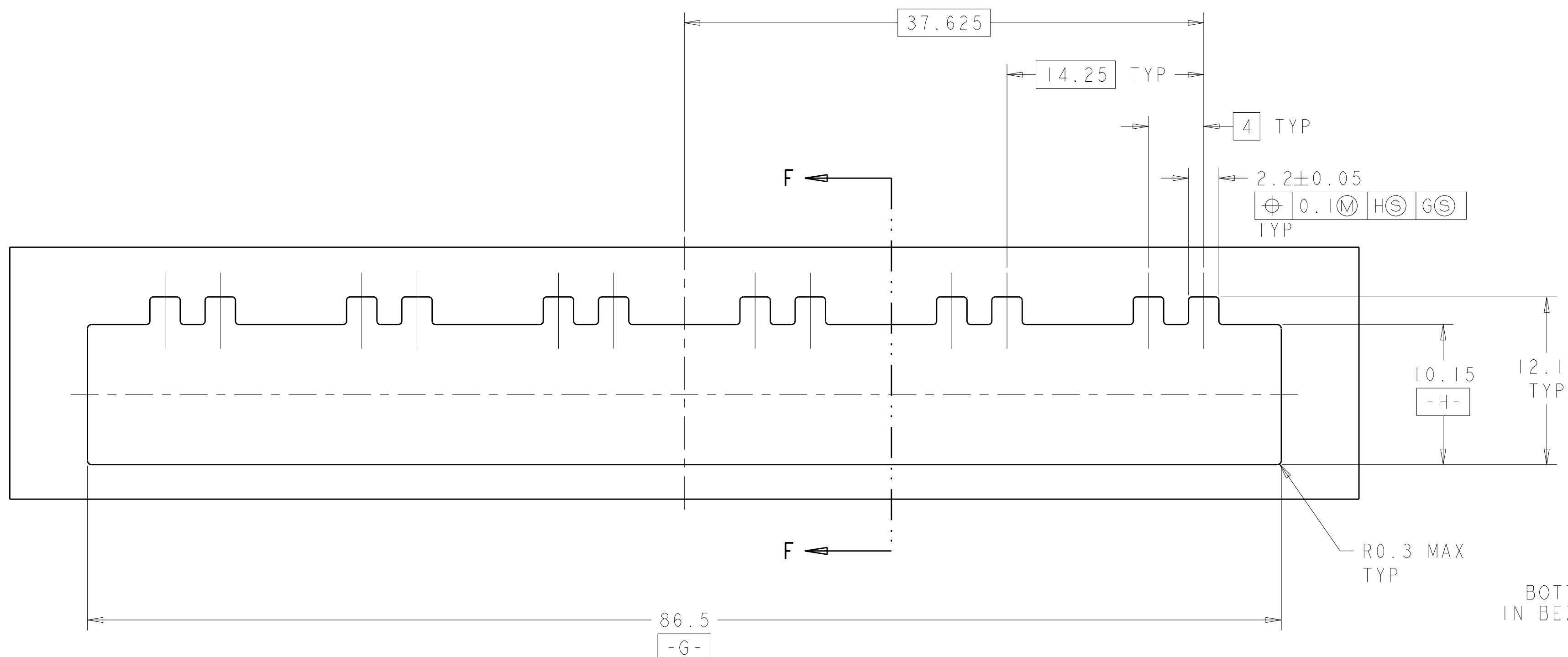
△12	1X6 ASSEMBLY	1658939-2
△11	1X6 ASSEMBLY	1658939-1
PACKAGE	POSITION	PART NUMBER

THIS DRAWING IS A CONTROLLED DOCUMENT.

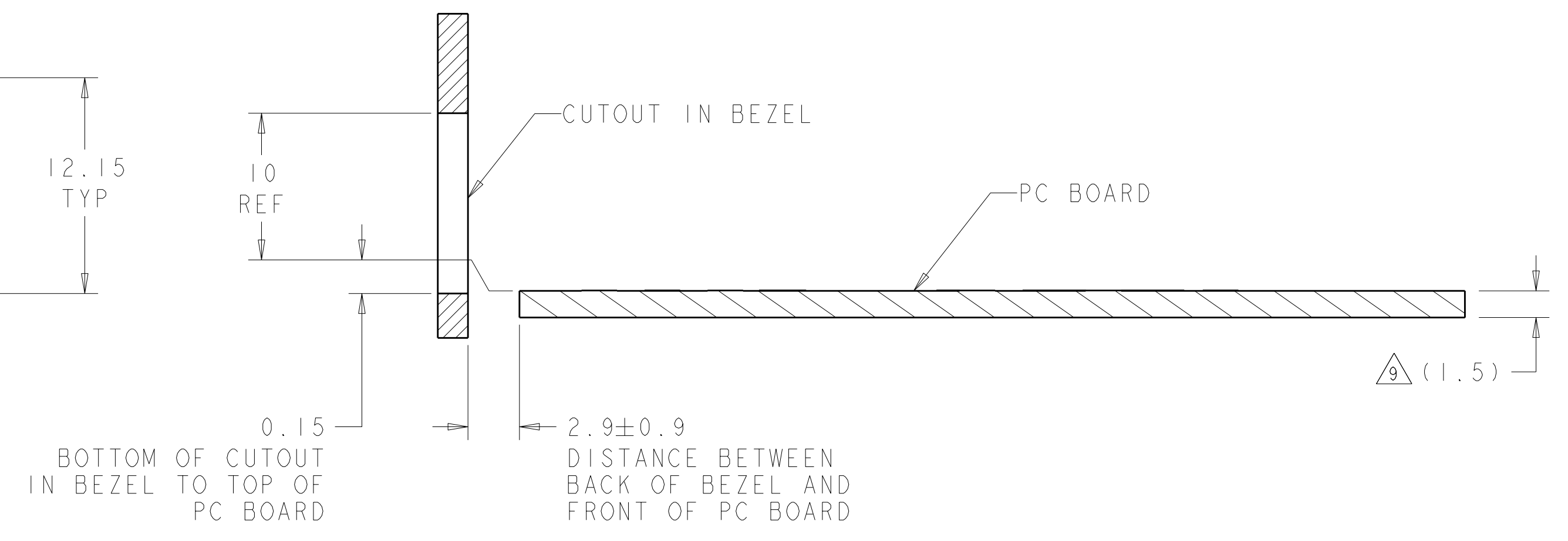
DIMENSIONS:	TOLERANCES UNLESS OTHERWISE SPECIFIED:	DWN M.E. COWHER 21NOV2003	CHK M.J. PHILLIPS 21NOV2003	APVD M.J. PHILLIPS 21NOV2003
mm	0 PLC ±0.1 1 PLC ±0.1 3 PLC ±0.1 4 PLC ±0.100 ANGLES ±°	PRODUCT SPEC 108-1950	APPLICATION SPEC 114-13120	WEIGHT
MATERIAL	FINISH	SIZE CAGE CODE DRAWING NO. A100779	SCALE 4:1	SHEET 1 OF 3
CUSTOMER DRAWING		REV E1		

STE TE Connectivity
SFP 1X6 CAGE ASSEMBLY WITH LIGHT PIPE

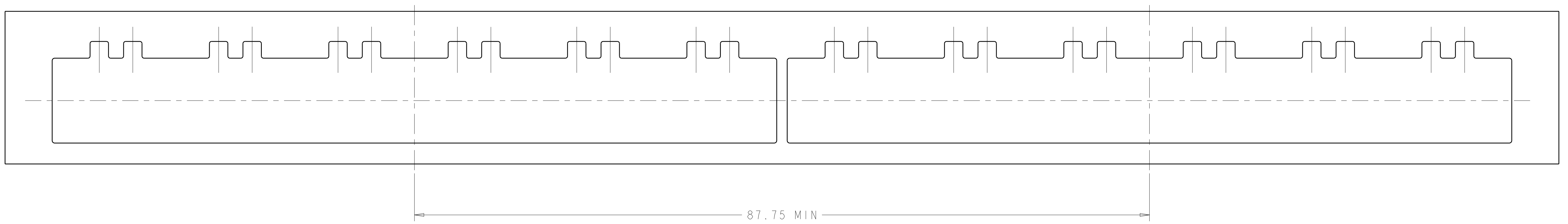
LOC	DIST	REV	DATE	BY	APPD
GP	00				
DESCRIPTION			DATE	DWN	APPD
SEE SHEET 1					



RECOMMENDED BEZEL CUTOUT



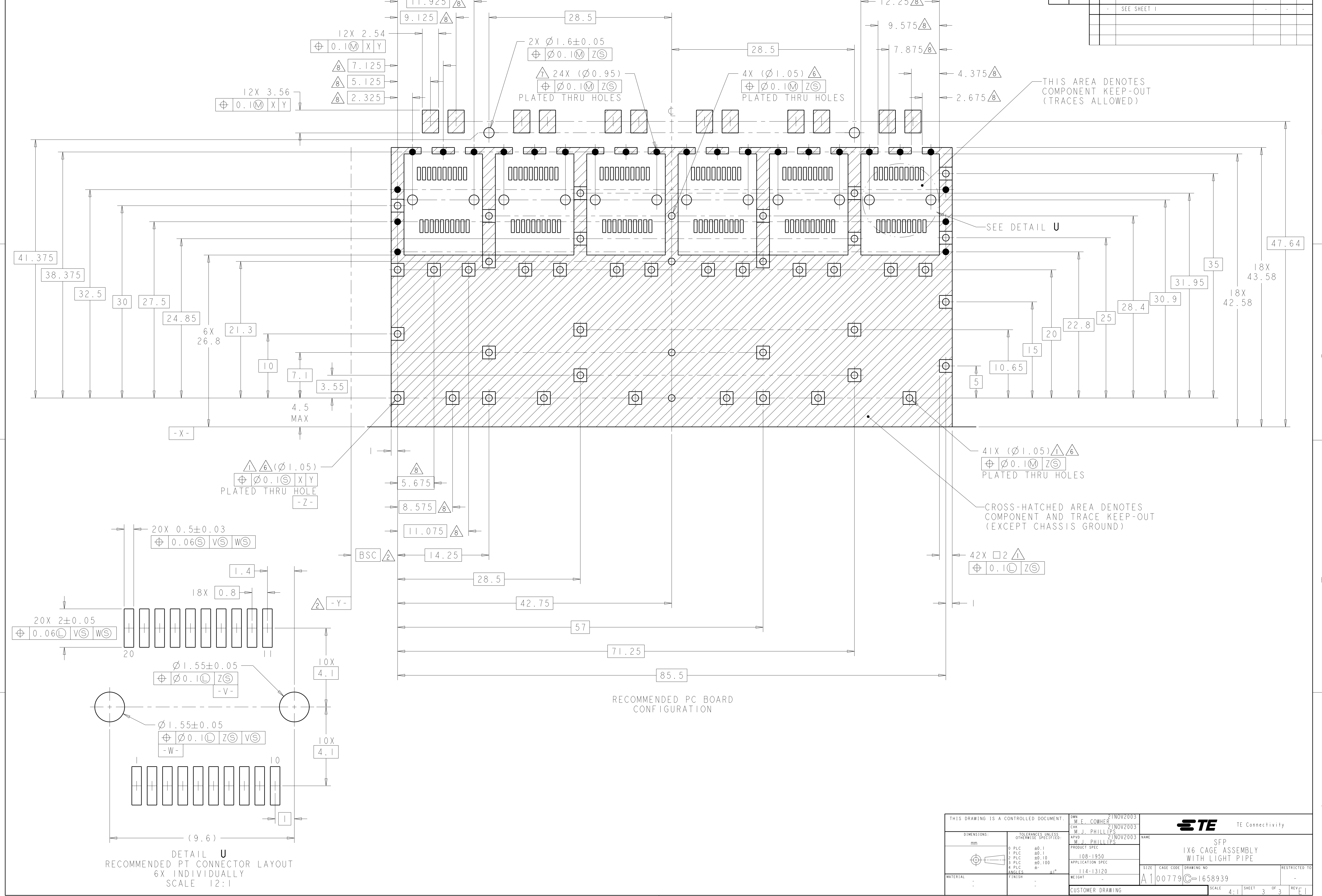
SECTION F-F
RECOMMENDED BEZEL CONFIGURATION



THIS DRAWING IS A CONTROLLED DOCUMENT.		DWN: M.E. COWHER 21NOV2003	 TE Connectivity
DIMENSIONS: mm		CHK: M.J. PHILLIPS 21NOV2003	
TOLERANCES UNLESS OTHERWISE SPECIFIED:		APVD: M.J. PHILLIPS 21NOV2003	NAME: SFP
9 PLC ±0.1	PRODUCT SPEC	108-1950	SIZE: CAGE CODE: DRAWING NO: A100779C-1658939
2 PLC ±0.1	APPLICATION SPEC	114-13120	RESTRICTED TO:
3 PLC ±0.10	WEIGHT: -	CUSTOMER DRAWING	SCALE: 4:1 SHEET 2 OF 3 REV: E
4 PLC ±0.100	FINISH: -		
ANGLES ±°			

LOC	DIST	REV	DATE	BY	APPD
GP	00				

REVISIONS		DATE	BY	APPD
1	SEE SHEET 1			

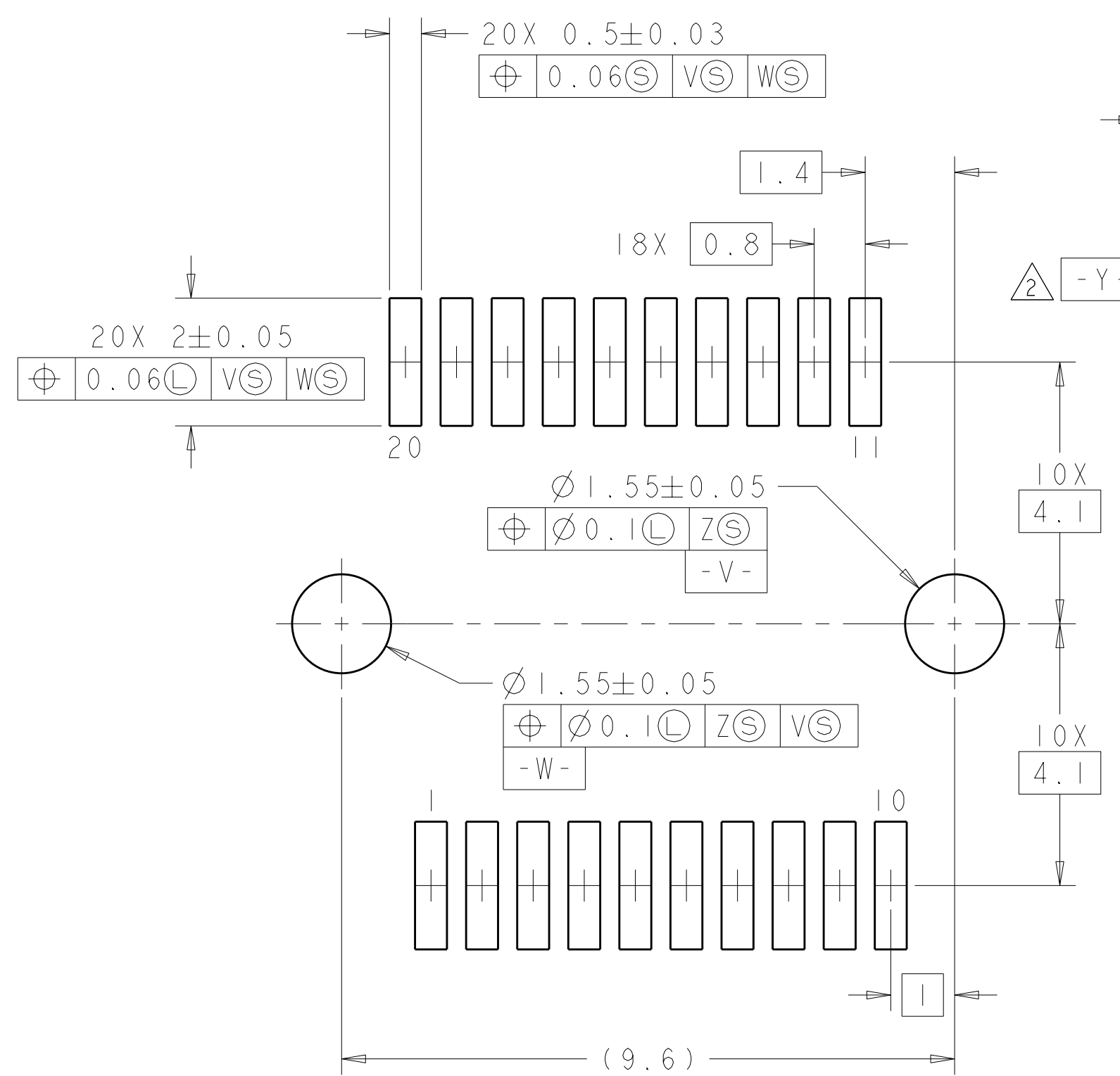


THIS AREA DENOTES COMPONENT KEEP-OUT (TRACES ALLOWED)

SEE DETAIL U

CROSS-HATCHED AREA DENOTES COMPONENT AND TRACE KEEP-OUT (EXCEPT CHASSIS GROUND)

RECOMMENDED PC BOARD CONFIGURATION



DETAIL U
RECOMMENDED PT CONNECTOR LAYOUT
6X INDIVIDUALLY
SCALE 12:1

THIS DRAWING IS A CONTROLLED DOCUMENT.		DWN M.E. CONNER 21NOV2003 CHK M.J. PHILLIPS 21NOV2003 APVD M.J. PHILLIPS 21NOV2003	TE Connectivity
DIMENSIONS: mm 	TOLERANCES UNLESS OTHERWISE SPECIFIED: 9 PLC ±0.1 1 PLC ±0.1 2 PLC ±0.10 3 PLC ±0.10 4 PLC ±* ANGLES ±*	NAME SFP PRODUCT SPEC 1X6 CAGE ASSEMBLY WITH LIGHT PIPE APPLICATION SPEC 108-1950 114-13120	
MATERIAL	FINISH	WEIGHT SCALE 4:1 SHEET 3 OF 3 REV E	SIZE CAGE CODE DRAWING NO. RESTRICTED TO A100779 C=1658939