



Chipsmall Limited consists of a professional team with an average of over 10 year of expertise in the distribution of electronic components. Based in Hongkong, we have already established firm and mutual-benefit business relationships with customers from,Europe,America and south Asia,supplying obsolete and hard-to-find components to meet their specific needs.

With the principle of “Quality Parts,Customers Priority,Honest Operation,and Considerate Service”,our business mainly focus on the distribution of electronic components. Line cards we deal with include Microchip,ALPS,ROHM,Xilinx,Pulse,ON,Everlight and Freescale. Main products comprise IC,Modules,Potentiometer,IC Socket,Relay,Connector.Our parts cover such applications as commercial,industrial, and automotives areas.

We are looking forward to setting up business relationship with you and hope to provide you with the best service and solution. Let us make a better world for our industry!



Contact us

Tel: +86-755-8981 8866 Fax: +86-755-8427 6832

Email & Skype: info@chipsmall.com Web: www.chipsmall.com

Address: A1208, Overseas Decoration Building, #122 Zhenhua RD., Futian, Shenzhen, China



LOC	DIST	REVISIONS				
		P	LTR	DESCRIPTION	DATE	DWN APVD
AD	00		A1	REVISED PER ECO-11-004917	11MAR11	RK HMR

SPECIFICATIONS:

MATERIALS:
MOVEABLE CONTACT: COPPER ALLOY, GOLD PLATE
OVER SILVER CLAD.
FIXED CONTACT: COPPER ALLOY, GOLD PLATE
OVER SILVER CLAD.

ELECTRICAL:
CONTACT RATING: 0.4VA @ 20VDC OR PEAK AC.
5 AMPS @ 250VAC OR 24VDC (RESISTANCE).
INITIAL CONTACT RESISTANCE: 20 MILLIOHMS MAX
INSULATION RESISTANCE: 100 MEGOHMS MINIMUM
DIELECTRIC STRENGTH: 1500 VOLTS RMS @ SEA LEVEL
LIFE EXPECTANCY: 100,000 OPERATIONS AT RATED CURRENT

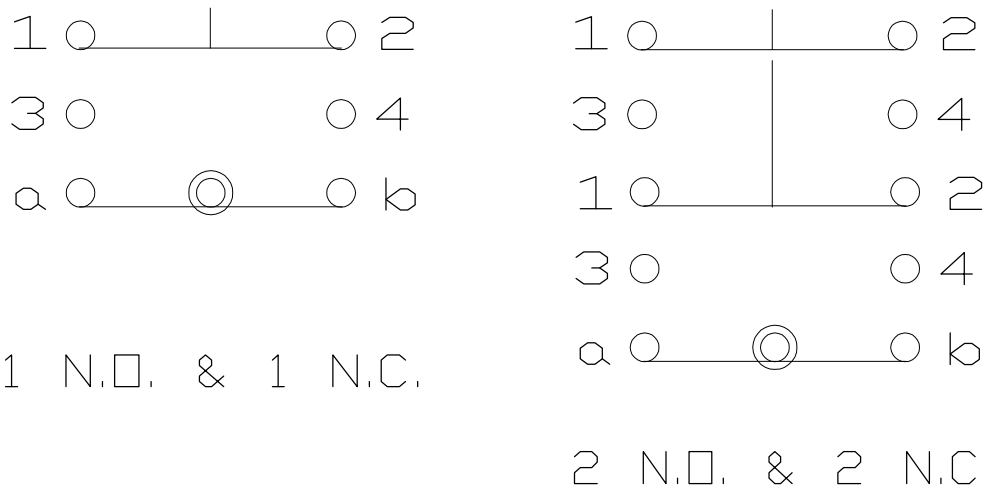
ENVIRONMENTAL:
OPERATING TEMPERATURE: -4 F TO 122 F
(-20 C TO 50 C)
STORAGE TEMPERATURE: -4 F TO 122 F
(-20 C TO 50 C)

- NOTES:
- INTERPRET DRAWING PER ASME Y14.5M-1994
 - DILTIGHT MODELS MEET NEMA 1, 12, 13 REQUIREMENTS
 - UL RECOGNIZED E-51302
 - PANEL THICKNESS: NON-DILTIGHT = 0.230 MAX
DILTIGHT = 0.210 MAX

- 5 THE PLATINGS CONTAINED IN THIS PART SHALL CONTAIN NO LEAD.
- 6 PRELIMINARY PART, NOT RELEASED FOR PRODUCTION.

* DENOTES DILTIGHT VERSION DIMENSIONS



** ORDER BUTTON AND LAMP SEPARATELY: SEE
REF 80810 & 80811



CONTACT DIAGRAM
(BUTTON NOT DEPRESSED)

WAS DWG 80809

1571543-3			164EL522		2 N.O. & N.C.	PUSH ON/PUSH OFF
1571543-2			164EL511		1 N.O. & N.C.	PUSH ON/PUSH OFF
1571543-1			164EL11		1 N.O. & N.C.	MOMENTARY
			165EL533		3 N.O. & N.C.	PUSH ON/PUSH OFF
4-1437569-5			165EL522		2 N.O. & N.C.	PUSH ON/PUSH OFF
4-1437569-4			165EL511		1 N.O. & N.C.	PUSH ON/PUSH OFF
			165EL33		3 N.O. & N.C.	MOMENTARY
4-1437569-3			165EL22		2 N.O. & N.C.	MOMENTARY
4-1437569-2			165EL11		1 N.O. & N.C.	MOMENTARY
1437569-7			164EL533		3 N.O. & N.C.	PUSH ON/PUSH OFF
1437569-6			164EL522		2 N.O. & N.C.	PUSH ON/PUSH OFF
1437569-5			164EL511		1 N.O. & N.C.	PUSH ON/PUSH OFF
1437569-4			164EL5		-	PUSH ON/PUSH OFF
			164EL33		3 N.O. & N.C.	MOMENTARY
1437569-3			164EL22		2 N.O. & N.C.	MOMENTARY
1437569-2			164EL11		1 N.O. & N.C.	MOMENTARY
1437569-1			164EL		-	MOMENTARY
PART No.	COMMENTS		MODEL NON DILTIGHT	MODEL DILTIGHT	CONTACTS	ACTION

THIS DRAWING IS A CONTROLLED DOCUMENT.		DWN CMM	11-4-87	 TE Connectivity				
		CHK JB	12-8-87					
DIMENSIONS: INCHES		APVD SMM	12-9-87	NAME ILUMINASTED PUSHBUTTON (164EL SERIES)				
		PRODUCT SPEC —						
		APPLICATION SPEC —		SIZE	CAGE CODE	DRAWING NO	RESTRICTED TO	
MATERIAL —		FINISH —	WEIGHT —	A2	00779	C=1437569-1	—	
CUSTOMER DRAWING					SCALE	NTS	SHEET 1 of 1	REV A1