



Chipsmall Limited consists of a professional team with an average of over 10 year of expertise in the distribution of electronic components. Based in Hongkong, we have already established firm and mutual-benefit business relationships with customers from,Europe,America and south Asia,supplying obsolete and hard-to-find components to meet their specific needs.

With the principle of "Quality Parts,Customers Priority,Honest Operation,and Considerate Service",our business mainly focus on the distribution of electronic components. Line cards we deal with include Microchip,ALPS,ROHM,Xilinx,Pulse,ON,Everlight and Freescale. Main products comprise IC,Modules,Potentiometer,IC Socket,Relay,Connector.Our parts cover such applications as commercial,industrial, and automotives areas.

We are looking forward to setting up business relationship with you and hope to provide you with the best service and solution. Let us make a better world for our industry!



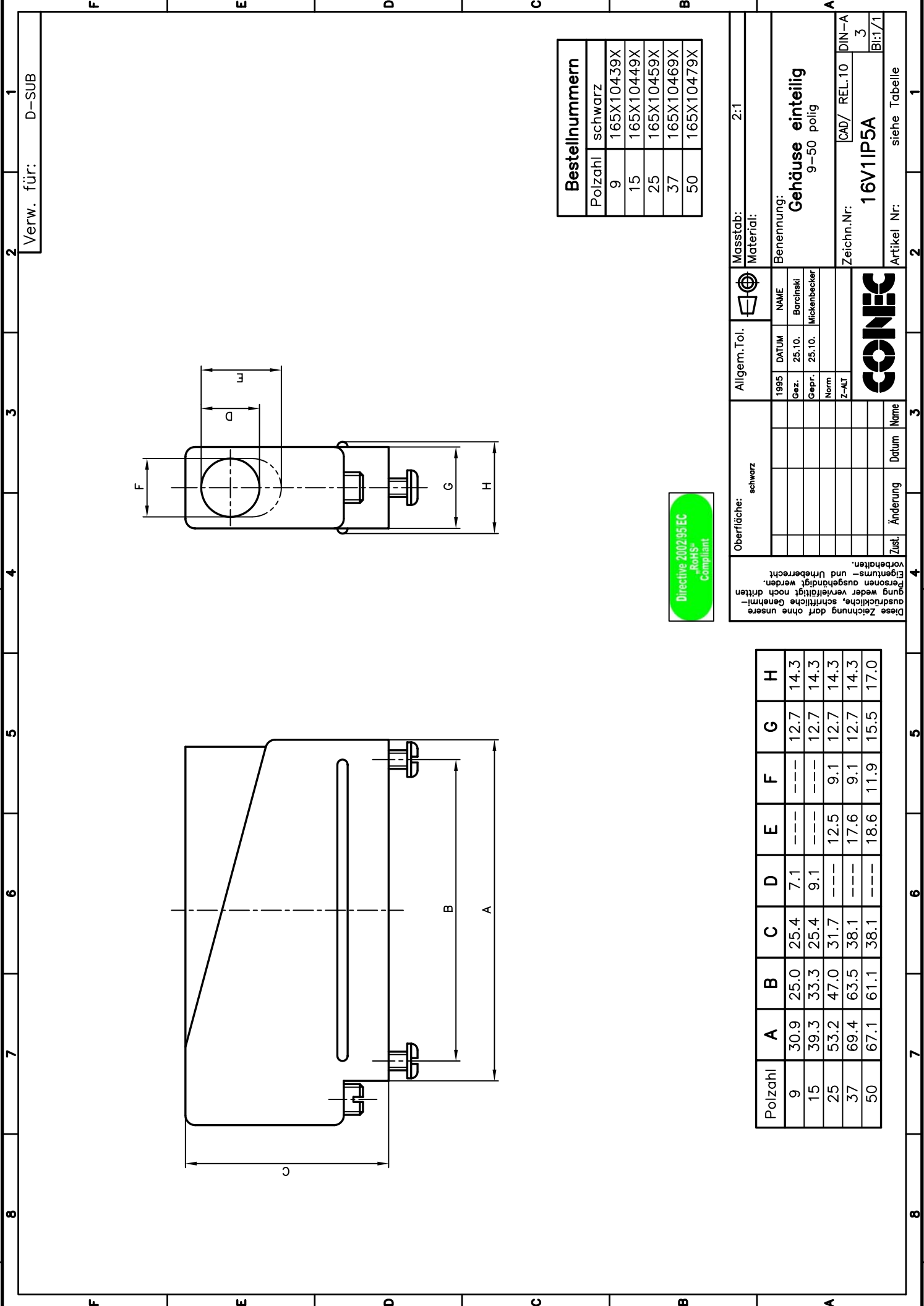
Contact us

Tel: +86-755-8981 8866 Fax: +86-755-8427 6832

Email & Skype: info@chipsmall.com Web: www.chipsmall.com

Address: A1208, Overseas Decoration Building, #122 Zhenhua RD., Futian, Shenzhen, China





Verw. für: D-SUB

Bestellnummern	
Polzahl	schwarz
9	165X104.39X
15	165X104.49X
25	165X104.59X
37	165X104.69X
50	165X104.79X

Directive 2002/95/EC
RoHS
Compliant

Oberfläche: schwarz		Allgem. Tol.		Masstab: 2:1	
1995		NAME		Benennung:	
Gez.	DATUM	Barcinski		Gehäuse einteilig	
Gepr.	25.10.	Mickenbecker		9-50 polig	
Norm				Zeichn.Nr. CAD/ REL.10 DIN-A	
Z-MIT				3	
				16V1IP5A	
				siehe Tabelle	
				Artikel Nr.	

Polzahl	A	B	C	D	E	F	G	H
9	30.9	25.0	25.4	7.1	---	---	12.7	14.3
15	39.3	33.3	25.4	9.1	---	---	12.7	14.3
25	53.2	47.0	31.7	---	12.5	9.1	12.7	14.3
37	69.4	63.5	38.1	---	17.6	9.1	12.7	14.3
50	67.1	61.1	38.1	---	18.6	11.9	15.5	17.0

Diese Zeichnung darf ohne unsere ausdrückliche, schriftliche Genehmigung weder veröffentlicht noch Dritten Eigentums- und Urheberrecht vorbehalten.

