



Chipsmall Limited consists of a professional team with an average of over 10 year of expertise in the distribution of electronic components. Based in Hongkong, we have already established firm and mutual-benefit business relationships with customers from,Europe,America and south Asia,supplying obsolete and hard-to-find components to meet their specific needs.

With the principle of “Quality Parts,Customers Priority,Honest Operation,and Considerate Service”,our business mainly focus on the distribution of electronic components. Line cards we deal with include Microchip,ALPS,ROHM,Xilinx,Pulse,ON,Everlight and Freescale. Main products comprise IC,Modules,Potentiometer,IC Socket,Relay,Connector.Our parts cover such applications as commercial,industrial, and automotives areas.

We are looking forward to setting up business relationship with you and hope to provide you with the best service and solution. Let us make a better world for our industry!



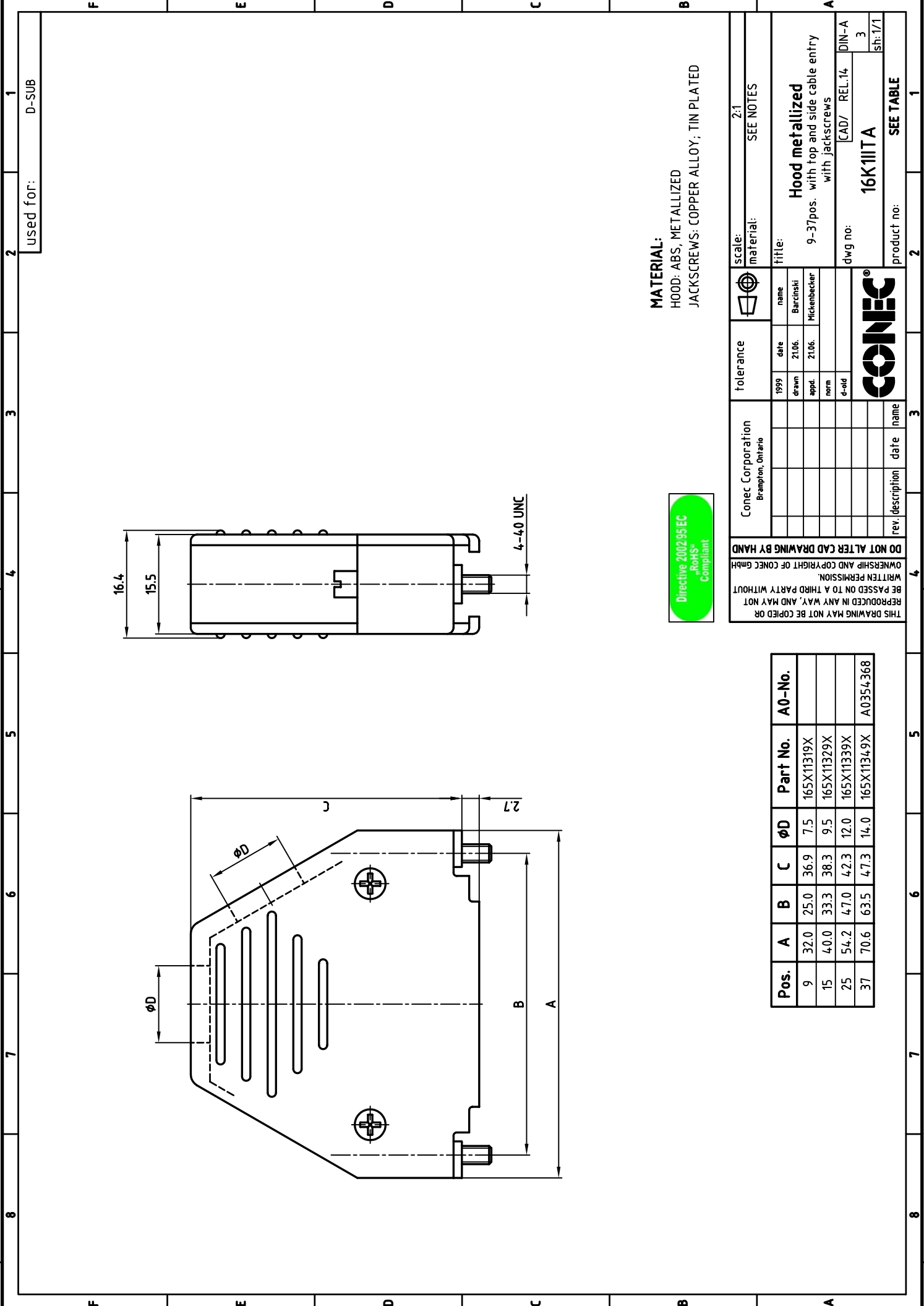
Contact us

Tel: +86-755-8981 8866 Fax: +86-755-8427 6832

Email & Skype: info@chipsmall.com Web: www.chipsmall.com

Address: A1208, Overseas Decoration Building, #122 Zhenhua RD., Futian, Shenzhen, China





used for: D-SUB

MATERIAL:
 HOOD: ABS, METALLIZED
 JACKSCREWS: COPPER ALLOY; TIN PLATED



Conec Corporation Brampton, Ontario		tolerance		scale: 2:1	
1999	date	name	material:	SEE NOTES	
drawn	21.06.	Barcinski	title:	Hood metallized	
appl.	21.06.	Mickenbecker	9-37pos. with top and side cable entry with jackscrews		
norm			[CAD/ REL.14/ DIN-A		
6-std			dwg no: 16K11ITA		
			sh: 1/1		
			product no: SEE TABLE		

THIS DRAWING MAY NOT BE COPIED OR REPRODUCED IN ANY WAY, AND MAY NOT BE PASSED ON TO A THIRD PARTY WITHOUT WRITTEN PERMISSION.

OWNERSHIP AND COPYRIGHT OF CONEC GMBH DO NOT ALTER CAD DRAWING BY HAND

Pos.	A	B	C	ØD	Part No.	A0-No.
9	32.0	25.0	36.9	7.5	165X11319X	
15	40.0	33.3	38.3	9.5	165X11329X	
25	54.2	47.0	42.3	12.0	165X11339X	
37	70.6	63.5	47.3	14.0	165X11349X	A0354/368