



Chipsmall Limited consists of a professional team with an average of over 10 year of expertise in the distribution of electronic components. Based in Hongkong, we have already established firm and mutual-benefit business relationships with customers from,Europe,America and south Asia,supplying obsolete and hard-to-find components to meet their specific needs.

With the principle of "Quality Parts,Customers Priority,Honest Operation,and Considerate Service",our business mainly focus on the distribution of electronic components. Line cards we deal with include Microchip,ALPS,ROHM,Xilinx,Pulse,ON,Everlight and Freescale. Main products comprise IC,Modules,Potentiometer,IC Socket,Relay,Connector.Our parts cover such applications as commercial,industrial, and automotives areas.

We are looking forward to setting up business relationship with you and hope to provide you with the best service and solution. Let us make a better world for our industry!



## Contact us

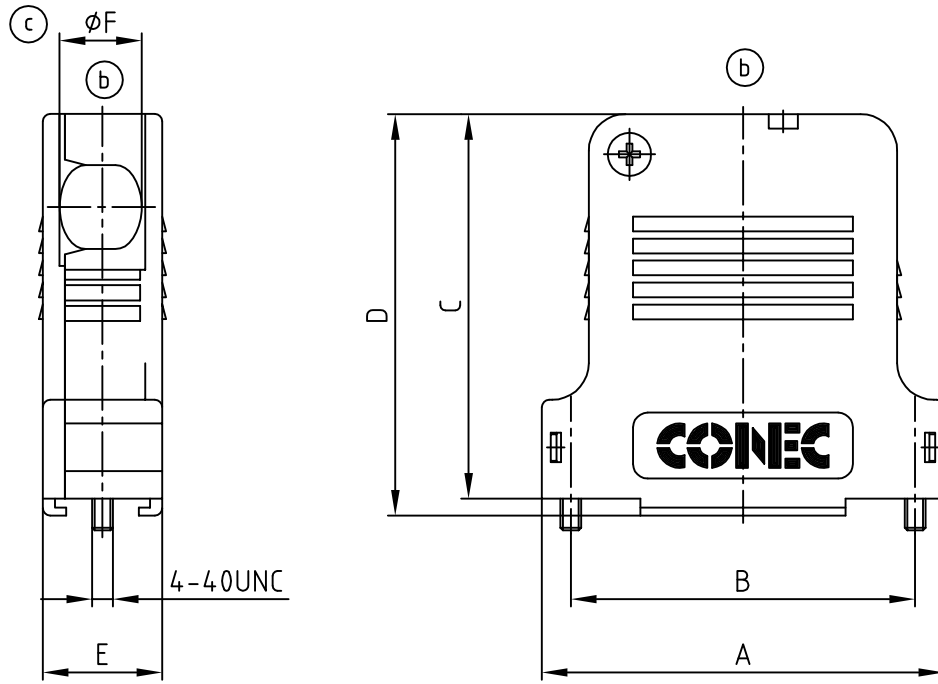
Tel: +86-755-8981 8866 Fax: +86-755-8427 6832

Email & Skype: info@chipsmall.com Web: www.chipsmall.com

Address: A1208, Overseas Decoration Building, #122 Zhenhua RD., Futian, Shenzhen, China



used for: D-SUB



(b) HOOD ASSEMBLY CONSISTS OF:

- 1 x HOOD + COVER: PBT UL 94 V-0; BLACK
- 1 x PRESS INSERT: PBT UL 94 V-0; BLACK
- 2 x JACKSCREWS: BRASS; NICKEL PLATED
- 2 x SCREW FOR STRAIN RELIEF: STEEL; ZINC PLATED
- 1 x COVER SCREWS: STEEL; NICKEL PLATED
- 1 x STRAIN RELIEF: STEEL; NICKEL PLATED

TECHNICAL DATA:

- TEMPERATURE RANGE: -33°C to +90°C

(c) Pos.	A	B	C	D	E	$\phi F$ cable diameter		PART NO.
						WITH PRESS INSERT	WITHOUT PRESS INSERT	
9	32.9	25.0	39.5	41.8	16.3	4.0 - 6.3	6.4 - 8.6	165X13419X
15	41.2	33.3	45.5	47.8	16.3	4.0 - 6.3	6.4 - 8.6	165X13429X
25	54.9	47.0	52.5	54.8	16.3	6.5 - 8.5	8.6 - 12.0	165X13439X
37	71.4	63.5	55.0	57.8	18.7	8.5 - 10.9	11.0 - 14.0	165X13449X
50	69.0	61.1	55.0	57.8	19.5	8.5 - 10.9	11.0 - 14.0	165X13459X

Directive 2002/95/EC RoHS compliant

THIS DRAWING MAY NOT BE COPIED OR REPRODUCED IN ANY WAY, AND MAY NOT BE PASSED ON TO A THIRD PARTY WITHOUT WRITTEN PERMISSION.  
 OWNERSHIP AND COPYRIGHT OF CONEC GmbH  
 DO NOT ALTER CAD DRAWING BY HAND

tolerance		scale: 1:1	
2000	date	material: SEE TECHNICAL DATA	
drawn	26.06.	title: PLASTIC HOOD WITH SIDE CABLE EXIT 9 to 50pos.	
appd.	26.06.	name	
norm		dwg no: AutoCAD 2000 DIN-A	
d-old		4	
2 x c	Ä 3644	12.05.2010	Petker
3 x b	Ä 2196	04.04.2005	Lehmen
rev.	description	date	name



material: SEE TECHNICAL DATA	
title: PLASTIC HOOD WITH SIDE CABLE EXIT 9 to 50pos.	
dwg no: AutoCAD 2000	DIN-A
16K1A009A	4
sh: 1/1	
product no: SEE TABLE	