



Chipsmall Limited consists of a professional team with an average of over 10 year of expertise in the distribution of electronic components. Based in Hongkong, we have already established firm and mutual-benefit business relationships with customers from,Europe,America and south Asia,supplying obsolete and hard-to-find components to meet their specific needs.

With the principle of “Quality Parts,Customers Priority,Honest Operation,and Considerate Service”,our business mainly focus on the distribution of electronic components. Line cards we deal with include Microchip,ALPS,ROHM,Xilinx,Pulse,ON,Everlight and Freescale. Main products comprise IC,Modules,Potentiometer,IC Socket,Relay,Connector.Our parts cover such applications as commercial,industrial, and automotives areas.

We are looking forward to setting up business relationship with you and hope to provide you with the best service and solution. Let us make a better world for our industry!



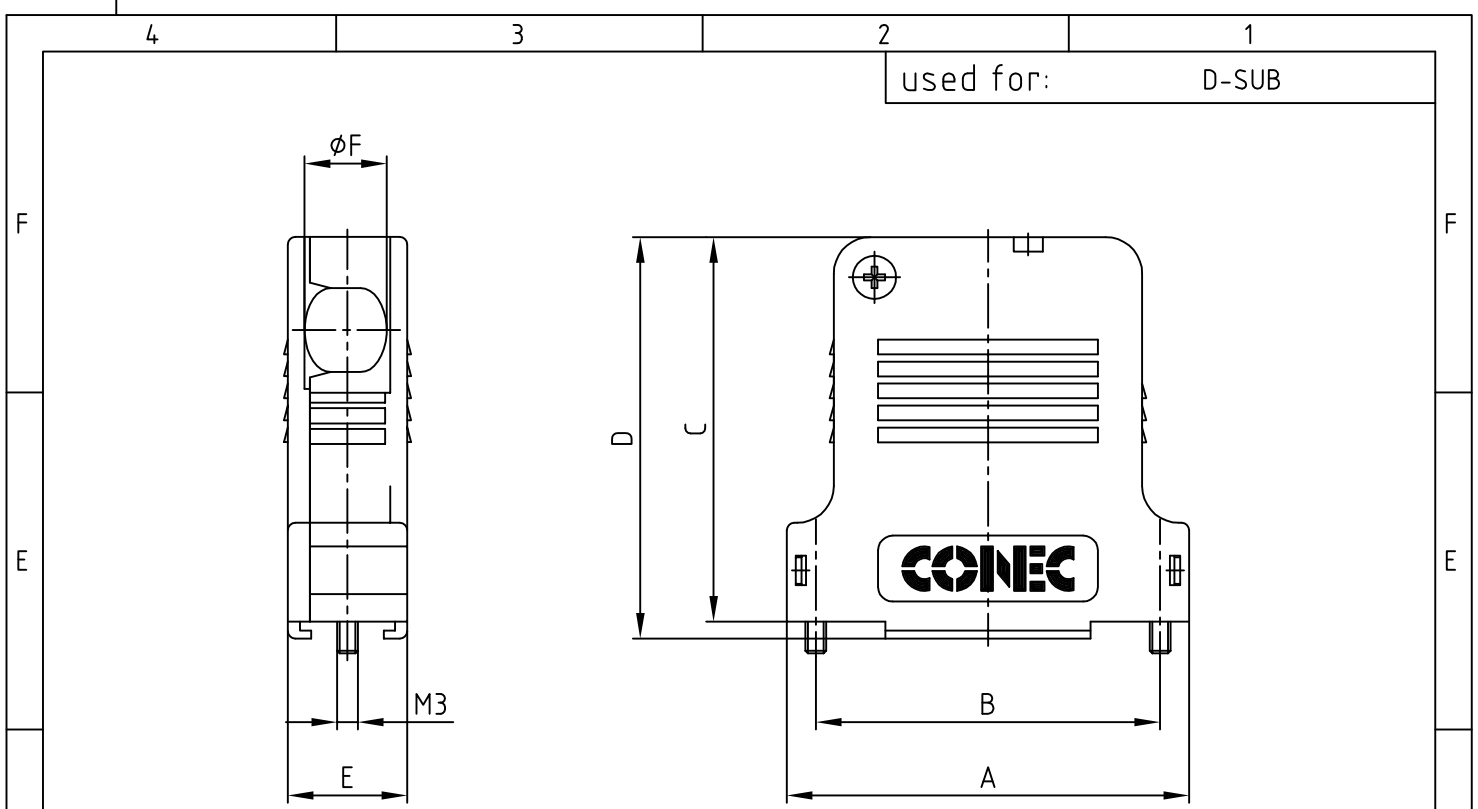
Contact us

Tel: +86-755-8981 8866 Fax: +86-755-8427 6832

Email & Skype: info@chipsmall.com Web: www.chipsmall.com

Address: A1208, Overseas Decoration Building, #122 Zhenhua RD., Futian, Shenzhen, China





HOOD ASSEMBLY CONSISTS OF:

- 1 x HOOD + COVER: PBT UL 94 V-0; BLACK
- 1 x PRESS INSERT: PBT UL 94 V-0; BLACK
- 2 x JACKSCREWS: BRASS; NICKEL PLATED
- 2 x SCREW FOR STRAIN RELIEF: STEEL; ZINC PLATED
- 1 x COVER SCREWS: STEEL; NICKEL PLATED
- 1 x STRAIN RELIEF: STEEL; NICKEL PLATED

Pos.	ØF cable diameter	
	WITH PRESS INSERT	WITHOUT PRESS INSERT
9	4.0 - 6.3	6.4 - 8.6
15	4.0 - 6.3	6.4 - 8.6
25	6.5 - 8.5	8.6 - 12.0
37	8.5 - 10.9	11.0 - 14.0
50	8.5 - 10.9	11.0 - 14.0

TECHNICAL DATA:

- TEMPERATURE RANGE: -40°C to +125°C (b)

Directive 2002/95/EC RoHS compliant

Pos.	A	B	C	D	E	Part No.	
						Bulk package	Single package
9	32.9	25.0	39.5	41.9	16.4	165X14559X	165X14559XE
15	41.2	33.3	45.5	47.9	16.4	165X14569X	165X14569XE
25	54.9	47.0	52.5	54.9	16.4	165X14579X	165X14579XE
37	71.4	63.5	55.0	57.9	18.8	165X14589X	165X14589XE
50	69.0	61.1	55.0	57.9	19.6	165X14599X	165X14599XE

THIS DRAWING MAY NOT BE COPIED OR REPRODUCED IN ANY WAY, AND MAY NOT BE PASSED ON TO A THIRD PARTY WITHOUT WRITTEN PERMISSION.
 OWNERSHIP AND COPYRIGHT OF CONEC GmbH
 DO NOT ALTER CAD DRAWING BY HAND

tolerance				scale: 1:1	
2010		date		material: SEE TECHNICAL DATA	
drawn		17.12.		title:	
appd.		17.12.		PLASTIC HOOD WITH SIDE CABLE EXIT 9 to 50pos.	
norm					
d-old				dwg no: AutoCAD	
3 x b		Ä5350		DIN-A	
a		Origin		4	
rev.		description		sh: 1/1	
date		17.09.2014		16K1A2754	
name		E.Mick.		product no: SEE TABLE	

