



Chipsmall Limited consists of a professional team with an average of over 10 year of expertise in the distribution of electronic components. Based in Hongkong, we have already established firm and mutual-benefit business relationships with customers from,Europe,America and south Asia,supplying obsolete and hard-to-find components to meet their specific needs.

With the principle of “Quality Parts,Customers Priority,Honest Operation,and Considerate Service”,our business mainly focus on the distribution of electronic components. Line cards we deal with include Microchip,ALPS,ROHM,Xilinx,Pulse,ON,Everlight and Freescale. Main products comprise IC,Modules,Potentiometer,IC Socket,Relay,Connector.Our parts cover such applications as commercial,industrial, and automotives areas.

We are looking forward to setting up business relationship with you and hope to provide you with the best service and solution. Let us make a better world for our industry!



Contact us

Tel: +86-755-8981 8866 Fax: +86-755-8427 6832

Email & Skype: info@chipsmall.com Web: www.chipsmall.com

Address: A1208, Overseas Decoration Building, #122 Zhenhua RD., Futian, Shenzhen, China



4

3

2

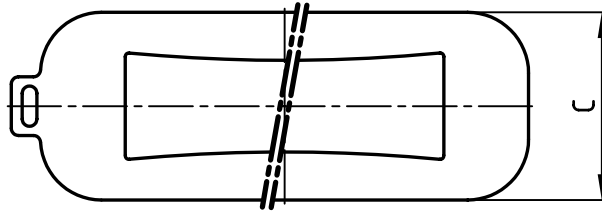
1

used for:

D-SUB

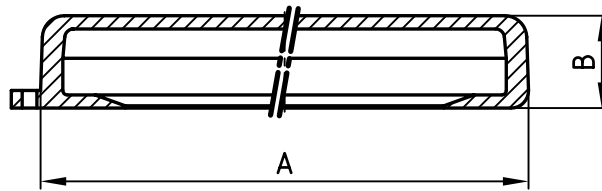
F

F



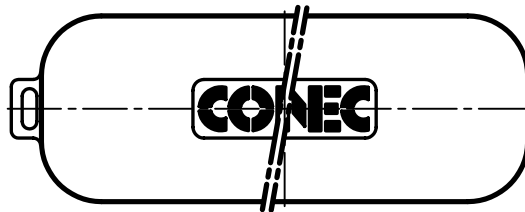
E

E



D

D



C

C



APPROVAL # FREIGABE # DEBLOCAGE # AUTORIZACION # APPROVAL	
CUSTOMER APPROVAL DATE:	
NAME:	TITLE:
COMPANY NAME:	
APPROVAL # FREIGABE # DEBLOCAGE # AUTORIZACION # APPROVAL	

No. of pos.	A	B	C	Part-No.
9	44.56	12.6	25.6	165X17509X
15	52.86	12.6	25.6	165X17519X
25	66.60	12.6	25.6	165X17529X
37	82.66	12.6	25.6	165X17539X
50	80.26	12.6	28.4	165X17549X

B

B

A

A

THIS DRAWING MAY NOT BE COPIED OR REPRODUCED IN ANY WAY, AND MAY NOT BE PASSED ON TO A THIRD PARTY WITHOUT WRITTEN PERMISSION.
OWNERSHIP AND COPYRIGHT OF CONEC GmbH
DO NOT ALTER CAD DRAWING BY HAND

tolerance		 dim. in mm	scale: 1:1	
			material: TPE	
2006	date	name		title: RUBBER BOOT 9-50pos. for water resistant D-SUB hoods
drawn	25.07.	Lehmenkühler		
appd.	25.07.	Kühle		
norm				
d-old				
a	Origin			dwg no: AutoCAD 2006 16K1A1855 part no: see table
rev.	description	date	name	DIN-A 4 sh: 1/1

4

3

2

1